

RNAV (GPS) Y RWY 13R

SEATTLE / BOEING FIELD/KING COUNTY INTL (BFI)

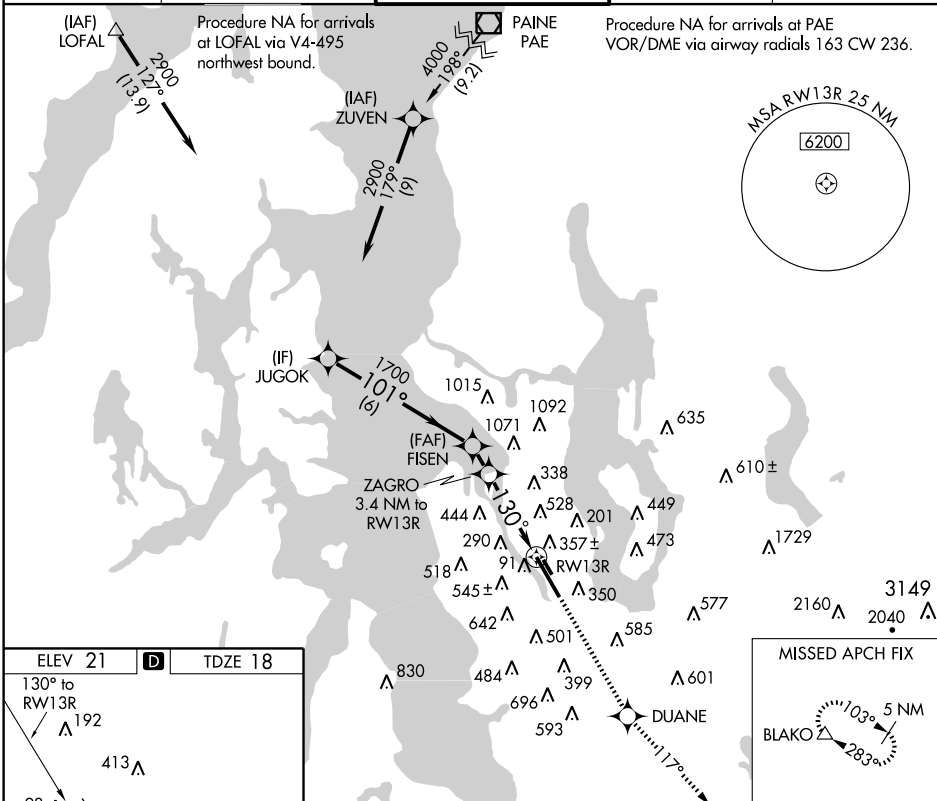
APP CRS 130°	Rwy Idg TDZE Apt Elev	9120 18 21
------------------------	-----------------------------	---------------------------------------

▼ Circling to Rwy 13L/31R NA at night.
▲ Inoperative table does not apply. DME/DME RNP -0.3 NA.
 Visibility reduction by helicopters NA.

MALSF

MISSED APPROACH: Climb to 6400 direct DUANE and via 117° track to BLAKO and hold, continue climb-in-hold to 6400.

ATIS 127.75	SEATTLE APP CON 119.2 284.7	BOEING TOWER 118.3 257.8 120.6 257.8 (128°-308°)	GND CON 121.9	CLNC DEL 132.4
-----------------------	---------------------------------------	---	-------------------------	--------------------------



NW-1, 31 MAY 2012 to 28 JUN 2012

NW-1, 31 MAY 2012 to 28 JUN 2012

