

LOC/DME I-BED <b>111.15</b> Chan <b>48 (Y)</b>	APP CRS <b>113°</b>	Rwy Idg <b>7011</b> TDZE <b>132</b> Apt Elev <b>132</b>
--	------------------------	---

# ILS or LOC RWY 11

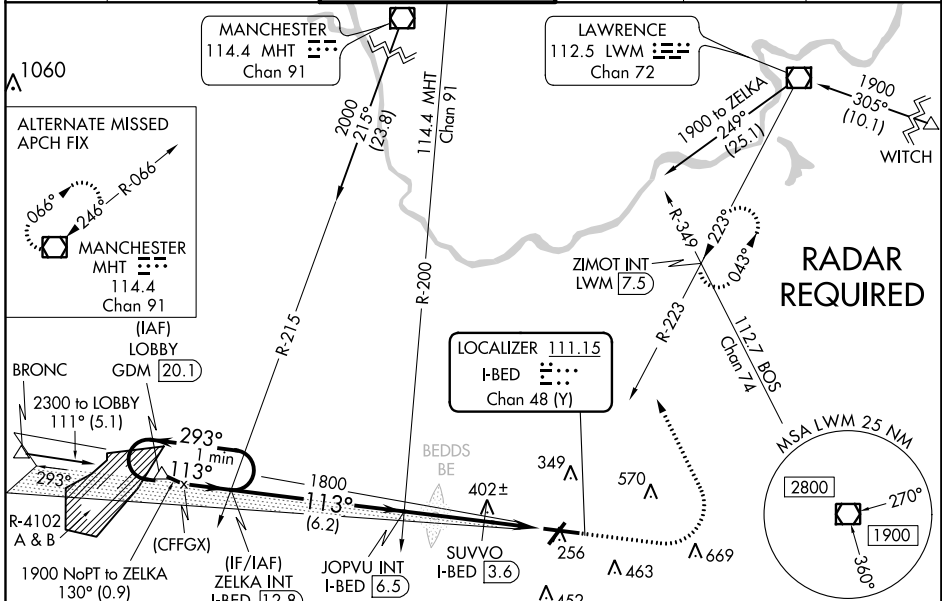
LAURENCE G HANSCOM FIELD (BED)

▼ VDP NA with Boston altimeter setting. When local altimeter setting not received, use Boston altimeter setting and increase all DA 49 feet and all MDA 60 feet; increase S-LOC 11 Cats B, C, and D visibility ¼ mile, Circling Cat C visibility ½ mile; increase SUVVO Fix Minimums S-LOC 11 and Circling Cats C and D visibility ¼ mile. For inop MALSR when using Boston altimeter setting, increase S-LOC 11 Cats C and D visibility to 2½ miles. Inop table does not apply to S-ILS 11 all Cats.

MALSR

MISSED APPROACH: Climb to 1000 then climbing left turn to 2000 on heading 350° and LWM VOR/DME R-223 to ZIMOT INT/LWM 7.5 DME and hold.

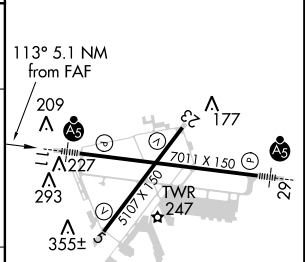
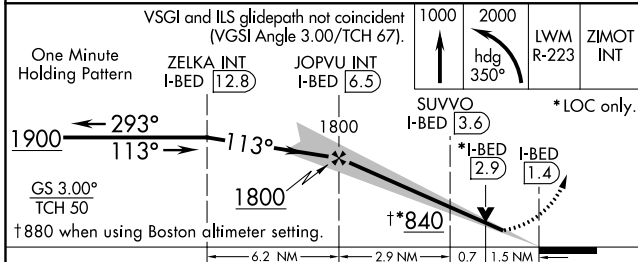
ATIS <b>124.6</b>	BOSTON APP CON <b>124.4 279.6</b>	HANSCOM TOWER* <b>118.5 (CTAF) 0 257.2</b>	GND CON <b>121.7</b>	CLNC DEL <b>121.85</b>	UNICOM <b>122.95</b>
----------------------	--------------------------------------	---	-------------------------	---------------------------	-------------------------



NE-1, 14 SEP 2017 to 12 OCT 2017

NE-1, 14 SEP 2017 to 12 OCT 2017

ELEV 132	<b>D</b> TDZE 132
----------	-------------------



CATEGORY	A	B	C	D
S-ILS 11	382/40		250 (300-¾)	
S-LOC 11	840/24	708 (800-½)	840-1⅝	708 (800-1⅝)
CIRCLING	840-1	708 (800-1)	708 (800-2)	708 (800-2¼)
SUVVO FIX MINIMUMS (DME REQUIRED)				
S-LOC 11	660/24	528 (600-½)	660/55	528 (600-1¼)
CIRCLING	720-1	588 (600-1)	720-1½	780-2
			588 (600-1½)	648 (700-2)

MIRL Rwy 5-23	<b>1</b>
HIRL Rwy 11-29	<b>1</b>
REIL Rws 5 and 23	<b>1</b>
FAF to MAP 5.1 NM	
Knots	60 90 120 150 180
Min:Sec	5:06 3:24 2:33 2:02 1:42