

APP CRS	Rwy Idg	<b>3000</b>
<b>058°</b>	TDZE	<b>157</b>
	Apt Elev	<b>157</b>

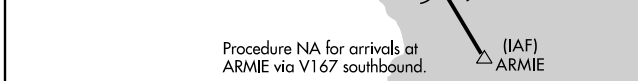
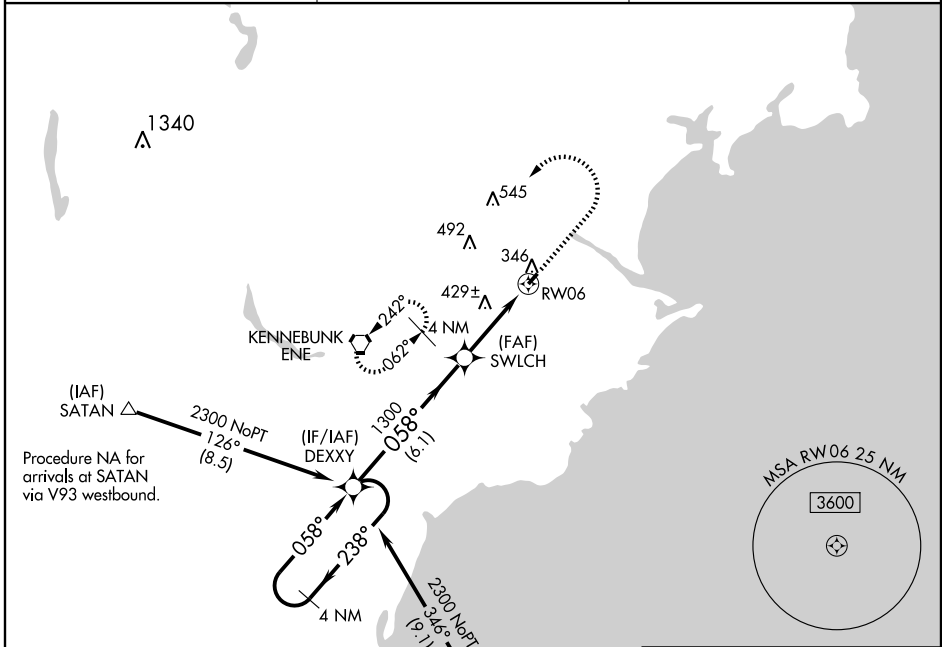
# RNAV (GPS) RWY 6

BIDDEFORD MUNI (B19)

**NA** Circling to Rwy 24 NA at night. DME/DME RNP-0.3 NA. Obtain local altimeter setting on CTAF; when not received, use Sanford altimeter setting. VDP NA with Sanford altimeter setting.

**MISSED APPROACH:** Climbing left turn to 3000 direct ENE VORTAC and hold, continue climb-in-hold to 3000.

PORTLAND APP CON ★	CINCL DEL	UNICOM
<b>119.75 381.2</b>	<b>126.05</b>	<b>123.0 (CTAF) 0</b>

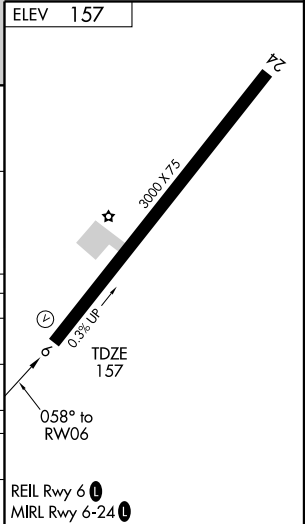


VGSI and descent angles not coincident.

CATEGORY	A	B	C	D
LNAV MDA	680-1	523 (600-1)	680-1½ 523 (600-1½)	NA
CIRCLING	780-1	623 (700-1)	780-1¾ 623 (700-1¾)	NA

SANFORD ALTIMETER SETTING MINIMUMS

LNAV MDA	720-1	563 (600-1)	720-1½ 563 (600-1½)	NA
CIRCLING	820-1	663 (700-1)	820-1¾ 663 (700-1¾)	NA



NE-1, 31 MAY 2012 to 28 JUN 2012

NE-1, 31 MAY 2012 to 28 JUN 2012

BIDDEFORD, MAINE

AL-6015 (FAA)

VORTAC ENE <b>117.1</b> Chan <b>118</b>	APP CRS <b>088°</b>	Rwy Idg TDZE Apt Elev <b>3000</b> <b>157</b> <b>157</b>
---	------------------------	--

# VOR RWY 6

BIDDEFORD MUNI (B19)

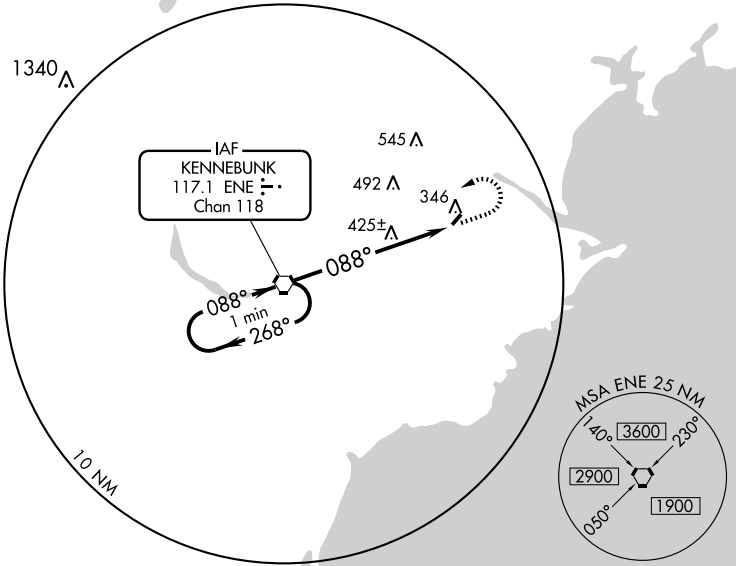
▼ NA Obtain local altimeter on CTAF; when not received, use Sanford altimeter setting.

MISSED APPROACH: Climb to 800, then climbing left turn to 2300 direct ENE VORTAC and hold.

PORTLAND APP CON ★  
**119.75 381.2**

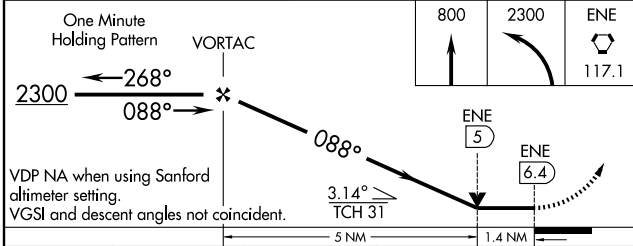
CLNC DEL  
**126.05**

UNICOM  
**123.0 (CTAF) 0**

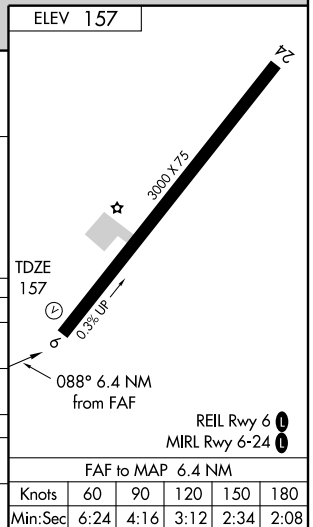


NE-1, 31 MAY 2012 to 28 JUN 2012

NE-1, 31 MAY 2012 to 28 JUN 2012



CATEGORY	A	B	C	D
S-6	680-1	523 (600-1)	680-1½ 523 (600-1½)	NA
CIRCLING	700-1	543 (600-1)	700-1½ 543 (600-1½)	NA
SANFORD ALTIMETER SETTING MINIMUMS				
S-6	720-1	563 (600-1)	720-1½ 563 (600-1½)	NA
CIRCLING	740-1	583 (600-1)	740-1½ 583 (600-1½)	NA



BIDDEFORD, MAINE  
Orig-A 08213

43°28'N - 70°28'W

# BIDDEFORD MUNI (B19) VOR RWY 6

FAF to MAP 6.4 NM					
Knots	60	90	120	150	180
Min:Sec	6:24	4:16	3:12	2:34	2:08