

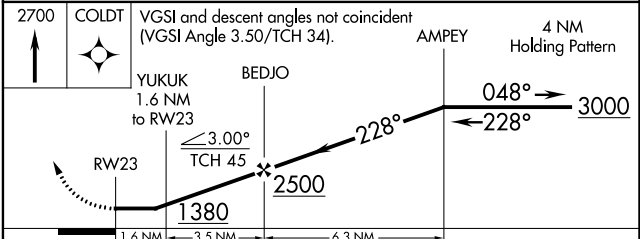
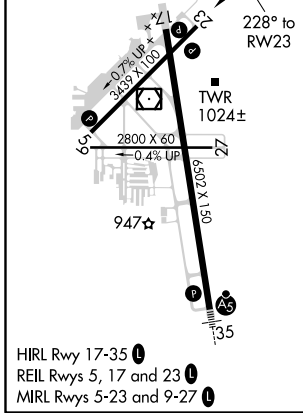
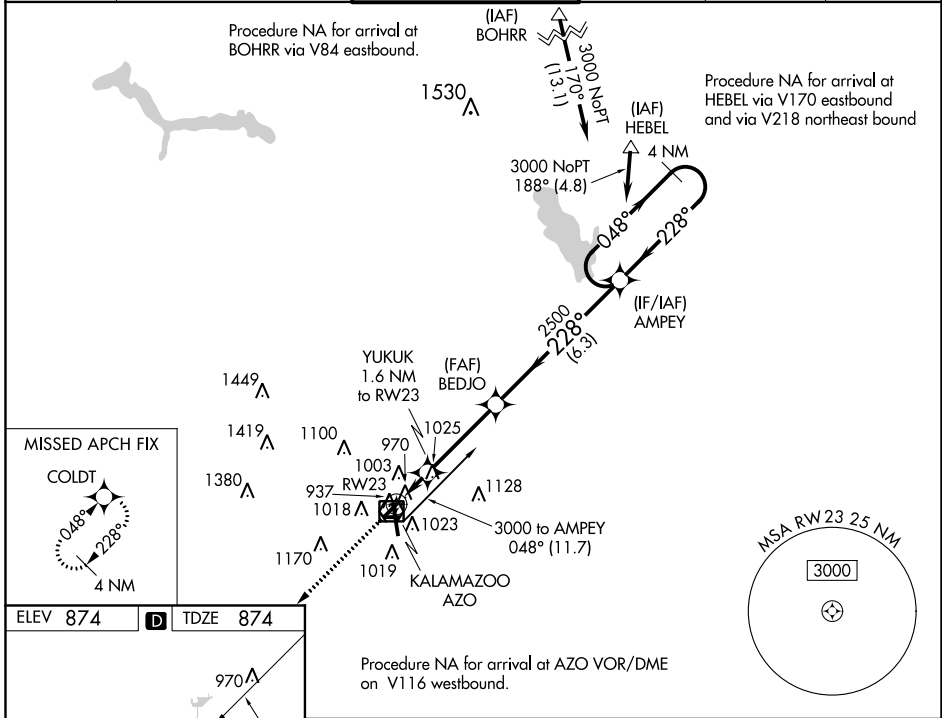
WAAS CH <b>61021</b> <b>W23A</b>	APP CRS <b>228°</b>	Rwy Idg TDZE Apt Elev	<b>3439</b> <b>874</b> <b>874</b>
--	------------------------	-----------------------------	---

# RNAV (GPS) RWY 23

KALAMAZOO/BATTLE CREEK INTL (AZO)

<b>⚠</b> ASR	DME/DME RNP-0.3 NA. Helicopter visibility reduction below 1 SM NA. When local altimeter setting not received, use Battle Creek altimeter setting and increase all MDA 60 feet, LP Cat C visibility to 1¼ and LNAV Cat C visibility to 1¾. Night landing: Rwy's 5, 9, 23, 27 NA.	MISSED APPROACH: Climb to 2700 direct COLDT and hold.
-----------------	---	--

ATIS <b>127.25</b>	KALAMAZOO APP CON * <b>121.2 239.25</b>	KALAMAZOO TOWER * <b>118.3 (CTAF) 0 257.875</b>	GND CON <b>121.9</b>	CLNC DEL <b>121.75</b>	UNICOM <b>122.95</b>
-----------------------	--	--	-------------------------	---------------------------	-------------------------



CATEGORY	A	B	C	D
LP MDA	1220-1 346 (400-1)			NA
LNAV MDA	1280-1	406 (500-1)	1280-1¼ 406 (500-1¼)	NA
CIRCLING	1380-1	506 (600-1)	1380-1½ 506 (600-1½)	NA

EC-1, 09 NOV 2017 to 07 DEC 2017

EC-1, 09 NOV 2017 to 07 DEC 2017