

WAAS CH 57933 W17A	APP CRS 174°	Rwy Idg TDZE Apt Elev	6502 867 874
--	------------------------	-----------------------------	---

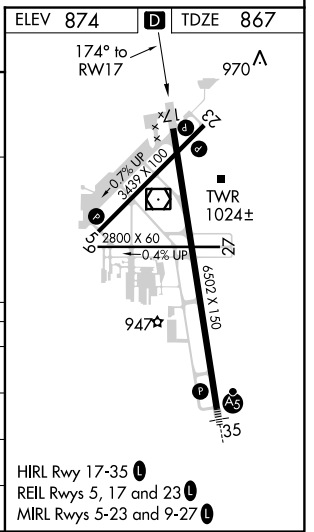
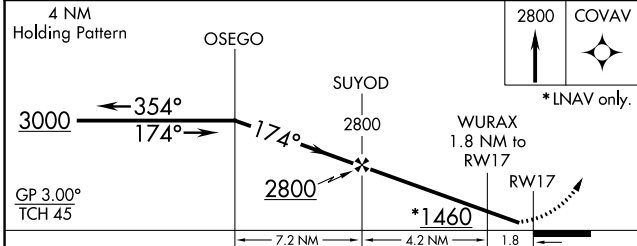
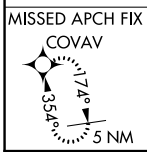
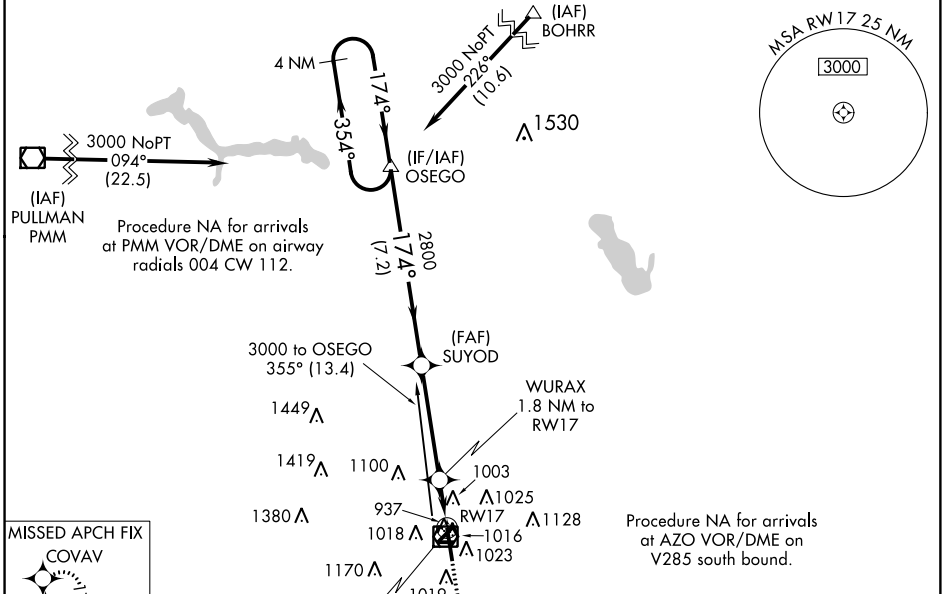
RNAV (GPS) RWY 17

KALAMAZOO/BATTLE CREEK INTL (AZO)

ASR Baro-VNAV NA when using Battle Creek altimeter setting. For uncompensated Baro-VNAV systems, LNAV/VNAV NA below -21°C (-5°F) or above 54°C (130°F). DME/DME RNP-0.3 NA. Helicopter visibility reduction below 3/4 SM not authorized. When local altimeter setting not received, use Battle Creek altimeter setting and increase all DA 44 feet and all MDA 60 feet. Increase LPV all Cats and LNAV Cat C/D visibility 1/8 mile. Increase LNAV/VNAV visibility all Cats 1/4 mile. Circling to Rwy 9/27 and 5/23 NA at night.

MISSED APPROACH: Climb to 2800 direct COVAV and hold.

ATIS 127.25	KALAMAZOO APP CON ★ 121.2 239.25	KALAMAZOO TOWER ★ 118.3 (CTAF) 0 257.875	GND CON 121.9	CLNC DEL 121.75	UNICOM 122.95
-----------------------	--	--	-------------------------	---------------------------	-------------------------



CATEGORY	A	B	C	D
LPV DA		1156-1	289 (300-1)	
LNAV/VNAV DA		1185-1	318 (400-1)	
LNAV MDA	1320-1	453 (500-1)	1320-1 3/8	453 (500-1 3/8)
CIRCLING	1380-1	506 (600-1)	1480-1 3/4	1480-2
			606 (700-1 3/4)	606 (700-2)

EC-1, 27 APR 2017 to 25 MAY 2017

EC-1, 27 APR 2017 to 25 MAY 2017