

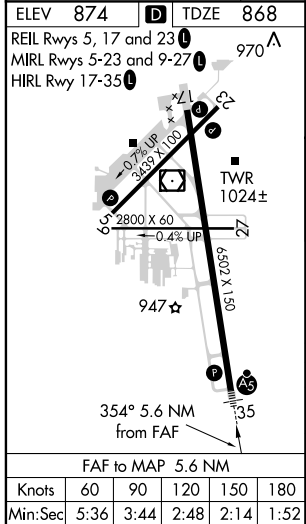
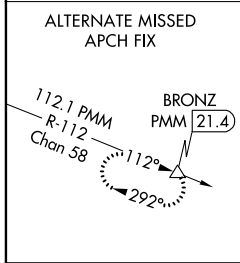
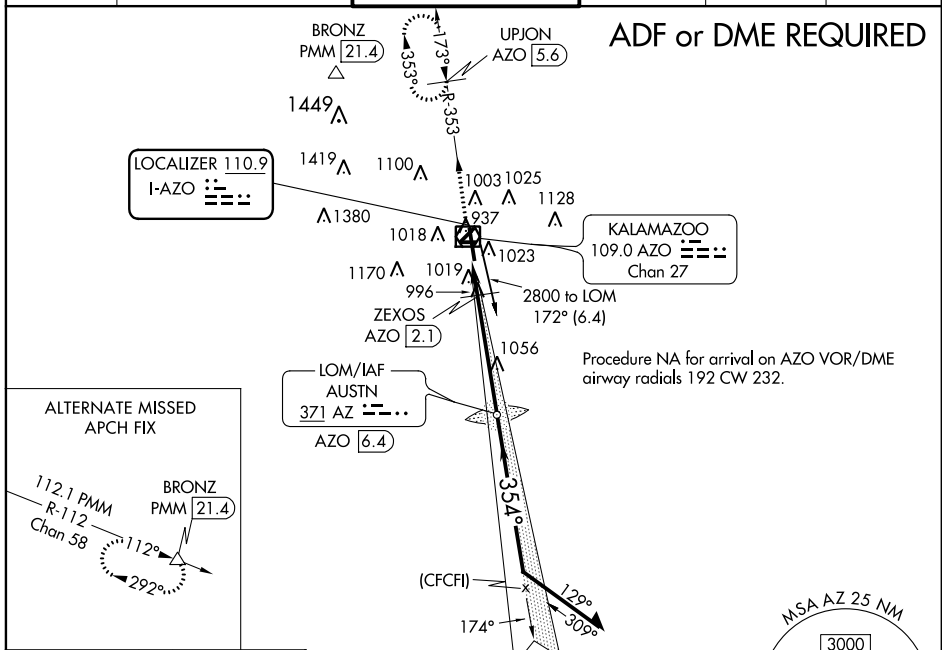
LOC I-AZO 110.9	APP CRS 354°	Rwy Idg TDZE Apt Elev	6502 868 874
---------------------------	------------------------	-----------------------------	---

ILS or LOC RWY 35
KALAMAZOO/BATTLE CREEK INTL (AZO)

ASR	Night landing: Rwy 5, 9, 23, 27 NA. DME required. For inop MALSRR, increase S-LOC 35 Cats C and D visibility to 1 $\frac{1}{2}$ mile. ** RVR 1800 authorized with use of FD or AP or HUD to DA.	MALSRR	MISSED APPROACH: Climb to 2600 on AZO VOR/DME R-353 to UPJON/AZO VOR/DME 5.6 DME and hold.
------------	--	---------------	--

ATIS 127.25	KALAMAZOO APP CON * 121.2 239.25	KALAMAZOO TOWER * 118.3 (CTAF) 0 257.875	GND CON 121.9	CLNC DEL 121.75	UNICOM 122.95
-----------------------	--	--	-------------------------	---------------------------	-------------------------

ADF or DME REQUIRED



2600	AZO R-353	UPJON AZO 5.6	AUSTIN LOM AZO 6.4	Remain within 10 NM
* LOC only	ZEXOS AZO 2.1	2800	2800	GS 3.00° TCH 53
	1.3 NM	4.3 NM		

CATEGORY	A	B	C	D
S-ILS 35		** 1068/24	200 (200- $\frac{1}{2}$)	
S-LOC 35	1260/24	392 (400- $\frac{1}{2}$)	1260/35	392 (400- $\frac{3}{4}$)
C CIRCLING	1380-1	506 (600-1)	1480-1 $\frac{3}{4}$ 606 (700-1 $\frac{3}{4}$)	1480-2 606 (700-2)

EC-1, 22 JUN 2017 to 20 JUL 2017

EC-1, 22 JUN 2017 to 20 JUL 2017