

ALTUS, OKLAHOMA

AL-5659 (FAA)

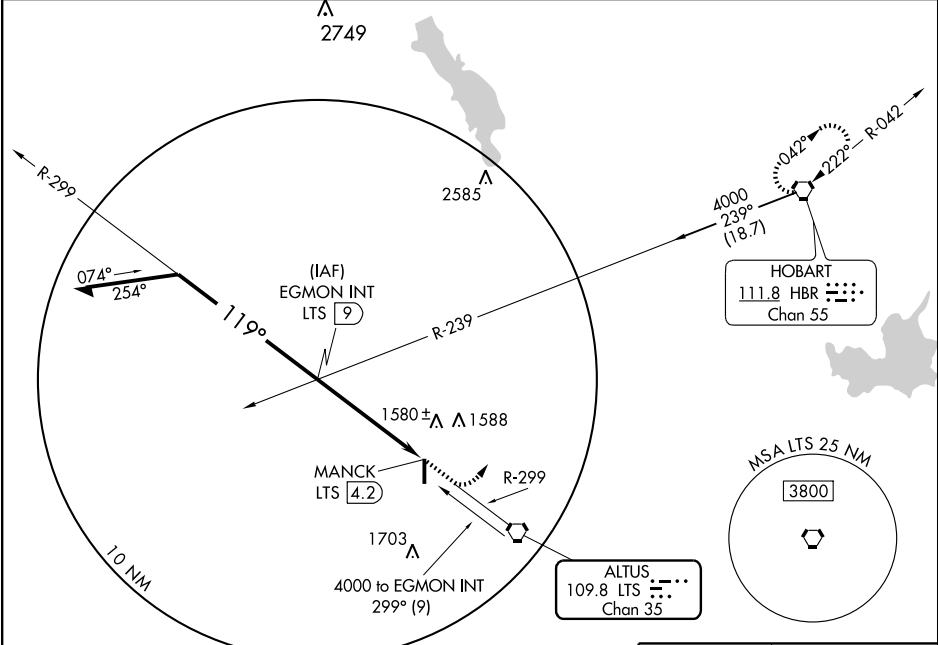
VOR-B

ALTUS/QUARTZ MOUNTAIN RGNL (A.X.S)

VORTAC LTS 109.8 Chan 35	APP CRS 119°	Rwy Idg TDZE Apt Elev N/A N/A 1433
--	------------------------	--

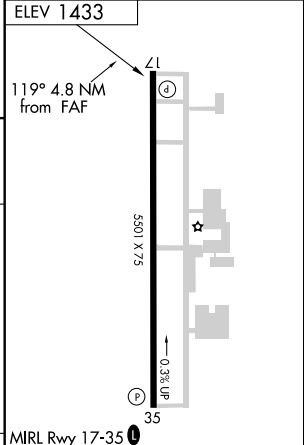
⚠ When local altimeter setting not received, use Hobart altimeter setting and increase MDA 80 feet. **MISSED APPROACH:** Climb to 2500 then climbing left turn to 4000 direct HBR VORTAC and hold.

AWOS-3 118.825	ALTUS APP CON* 125.1 259.3	UNICOM 122.8 (CTAF) 0
--------------------------	--------------------------------------	---------------------------------



SC-1, 31 MAY 2012 to 28 JUN 2012

SC-1, 31 MAY 2012 to 28 JUN 2012



Remain within 10 NM	2500	4000	HBR
	↑	↷	111.8

CATEGORY	A	B	C	D	FAF to MAP 4.8 NM					
CIRCLING	1940-1	507 (600-1)	1940-1½ 507 (600-1½)	NA	Knots	60	90	120	150	180
					Min:Sec	4:48	3:12	2:24	1:55	1:36

ALTUS, OKLAHOMA
Amdt 1 09267

34°42'N - 99°20'W

ALTUS/QUARTZ MOUNTAIN RGNL (A.X.S)

VOR-B