

ALTUS, OKLAHOMA

AL-5659 (FAA)

VOR-A

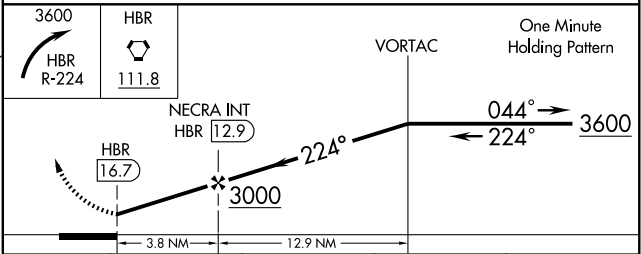
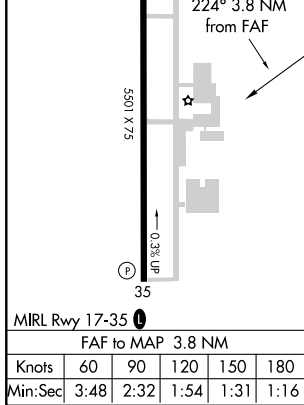
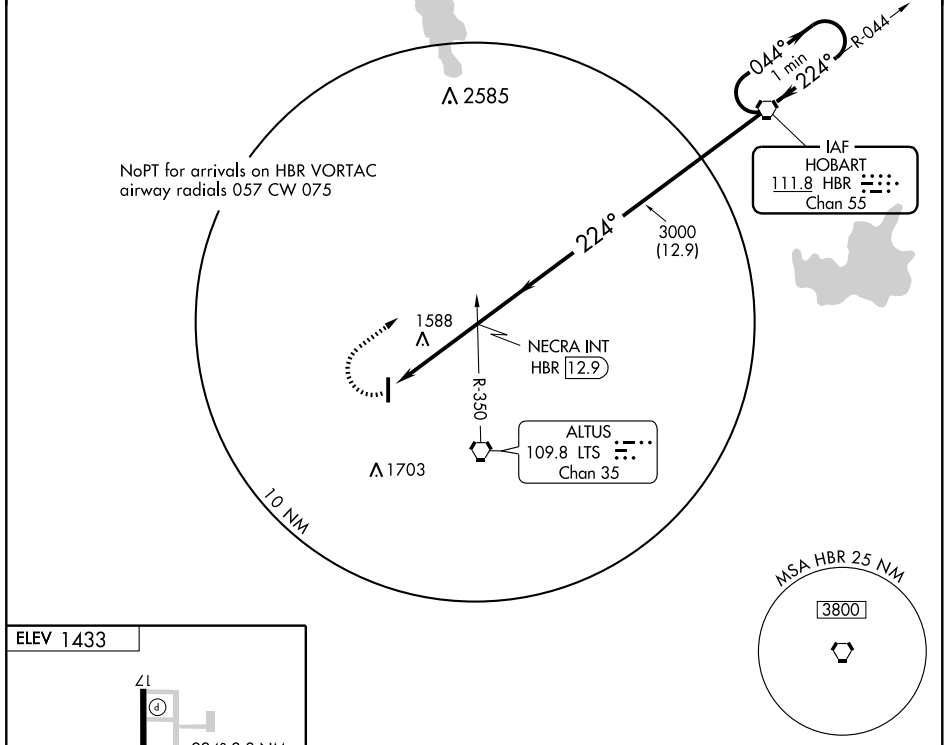
ALTUS/QUARTZ MOUNTAIN RGNL (A.X.S)

VORTAC HBR 111.8 Chan 55	APP CRS 224°	Rwy Idg TDZE Apt Elev 1433	N/A N/A 1433
--	------------------------	---	---------------------------

⚠ When local altimeter setting not received use Hobart altimeter setting.

⚠ MISSED APPROACH: Climbing right turn to 3600 via HBR R-224 to HBR VORTAC and hold.

AWOS-3 118.825	ALTUS APP CON* 125.1 259.3	UNICOM 122.8 (CTAF)
--------------------------	--------------------------------------	-------------------------------



CATEGORY	A	B	C	D
CIRCLING	1940-1	507 (600-1)	1940-1½ 507 (600-1½)	NA
HOBART MUNI ALTIMETER SETTING MINIMUMS				
CIRCLING	2020-1	587 (600-1)	2020-1½ 587 (600-1½)	NA

ALTUS, OKLAHOMA
Amdt 4D 09267

34°42'N - 99°20'W

ALTUS/QUARTZ MOUNTAIN RGNL (A.X.S)

VOR-A

SC-1, 31 MAY 2012 to 28 JUN 2012

SC-1, 31 MAY 2012 to 28 JUN 2012