

WAAS CH 93914 W35A	APP CRS 352°	Rwy Idg TDZE Apt Elev	5501 1423 1433
--	------------------------	-----------------------------	---

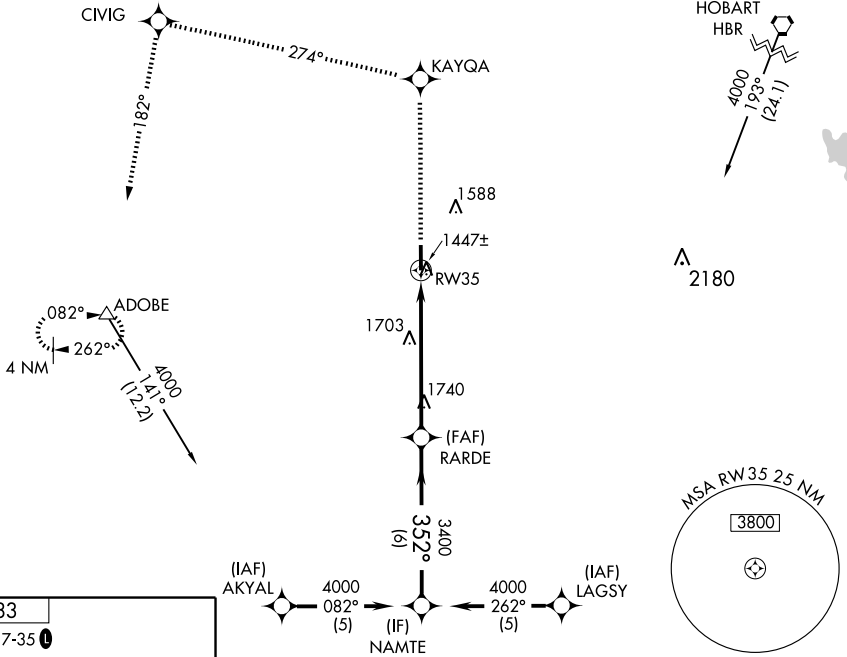
RNAV (GPS) RWY 35

ALTUS/QUARTZ MOUNTAIN RGNL (A.X.S)

⚠ For uncompensated Baro-VNAV systems, LNAV/VNAV NA below -17°C (2°F) or above 54°C (130°F). DME/DME RNP-0.3 NA. When local altimeter setting not received, use Hobart altimeter setting and increase all DA 71 feet and all MDA 80 feet, increase LPV and LNAV/VNAV all Cats, LNAV Cat C and Circling Cat C visibility ¼ mile. Baro-VNAV and VDP NA when using Hobart altimeter setting.

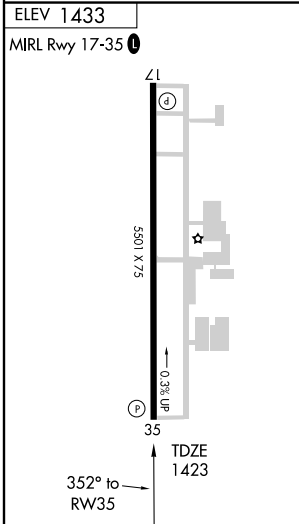
MISSED APPROACH: Climb to 4000 direct KAYQA and via track 274° to CIVIG and left turn via track 182° to ADOBE and hold.

AWOS-3 118,825	ALTUS APP CON* 125.1 259.3	UNICOM 122.8 (CTAF) 0
--------------------------	--------------------------------------	---------------------------------



SC-1, 31 MAY 2012 to 28 JUN 2012

SC-1, 31 MAY 2012 to 28 JUN 2012



4000 KAYQA	TRK 274°	CIVIG	TRK 182°	ADOBE	NAMTE
↑	⬅	⬅	⬅	⬅	⬅
* LNAV only		* 1.8 NM to RW35		Procedure Turn NA	
RW35		RARDE		NAMTE	
1.8 NM		4.2 NM		6 NM	
3400		352°		4000	
GS 3.00°		TCH 50			
CATEGORY	A	B	C	D	
LPV DA	1673-1		250 (300-1)	NA	
LNAV/VNAV DA	1717-1		294 (300-1)	NA	
LNAV MDA	2040-1	617 (700-1)		2040-1¾ 617 (700-1¾)	
CIRCLING	2040-1	607 (700-1)		2040-1¾ 607 (700-1¾)	