

WAAS CH 86216 W17A	APP CRS 172°	Rwy Idg TDZE 1433 Apt Elev 1433	5501
--	------------------------	---	-------------

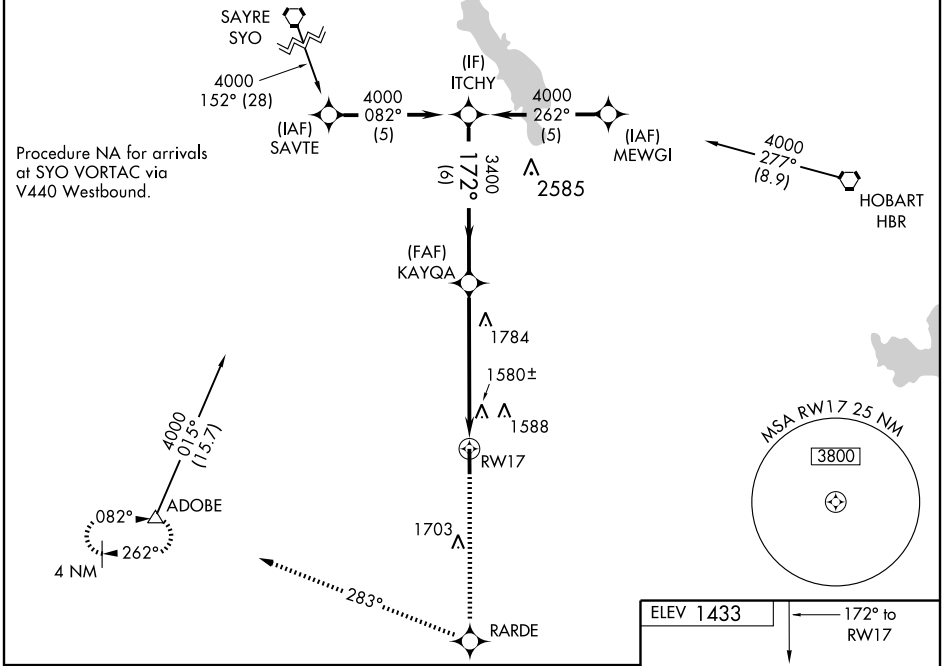
RNAV (GPS) RWY 17

ALTUS/QUARTZ MOUNTAIN RGNL (A.X.S)

⚠ For uncompensated Baro-VNAV systems, LNAV/VNAV NA below -17°C (2°F) or above 54°C (130°F). DME/DME RNP-0.3 NA. When local altimeter setting not received, use Hobart altimeter setting and increase all DA 71 feet and all MDA 80 feet, increase LPV and LNAV/VNAV all Cats, LNAV Cat B and Circling Cat B visibility ¼ mile, increase LNAV Cat C and Circling Cat C visibility ½ mile. Baro-VNAV and VDP NA when using Hobart altimeter setting.

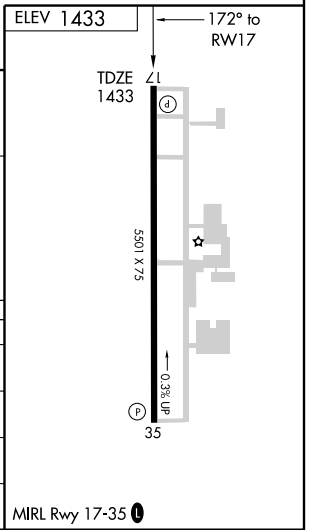
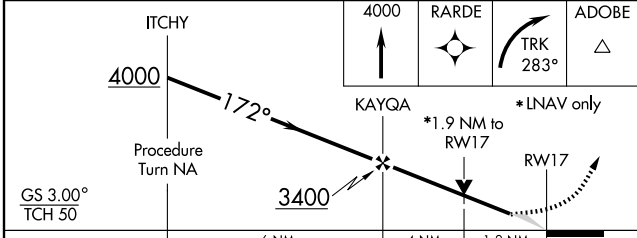
MISSED APPROACH: Climb to 4000 direct RARDE and right turn via track 283° to ADOBE and hold.

AWOS-3 118.825	ALTUS APP CON* 125.1 259.3	UNICOM 122.8 (CTAF) 0
--------------------------	--------------------------------------	---------------------------------



SC-1, 31 MAY 2012 to 28 JUN 2012

SC-1, 31 MAY 2012 to 28 JUN 2012



CATEGORY	A	B	C	D
LPV DA	1713-1	280 (300-1)		NA
LNAV/VNAV DA	1925-1¾	492 (500-1¾)		NA
LNAV MDA	2100-1	667 (700-1)	2100-1¾ 667 (700-1¾)	NA
CIRCLING	2100-1	667 (700-1)	2100-1¾ 667 (700-1¾)	NA