

WAAS CH 90303 W09A	APP CRS 089°	Rwy Idg 5003 TDZE 68 Apt Elev 68
--	------------------------	---

RNAV (GPS) RWY 9

HOUSTON-SOUTHWEST (AXH)

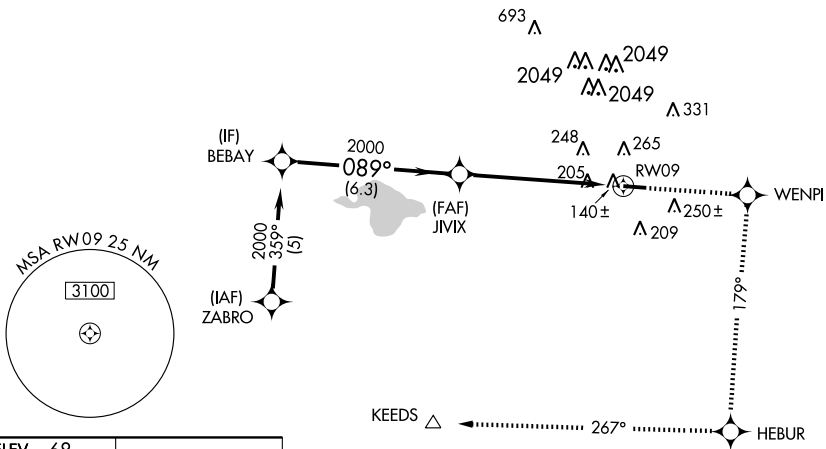
▽ For uncompensated Baro-VNAV systems, LNAV/VNAV NA below -15°C (5°F) or above 54°C (130°F). DME/DME RNP-0.3 NA. Visibility reduction by helicopters NA. Obtain local altimeter setting on CTAF; when not received use William P. Hobby altimeter setting and increase all DAs/MDAs 40 feet, and LPV, LNAV/VNAV visibility ¼ mile. Baro-VNAV and VDP NA when using William P. Hobby altimeter setting.

△ NA

MISSED APPROACH: Climb to 2700 direct WENPI and via 179° track to HEBUR and via 267° track to KEEDS.

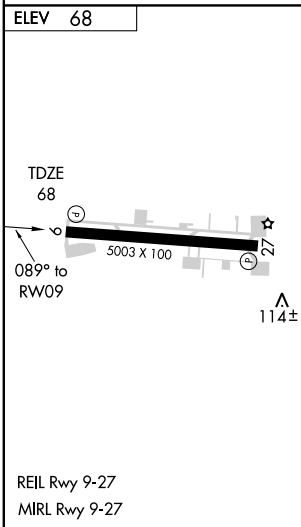
AWOS-3 123.625	HOUSTON APP CON 123.8 257.7	CLNC DEL 120.8	UNICOM 123.0 (CTAF)
--------------------------	---------------------------------------	--------------------------	-------------------------------

RADAR REQUIRED



SC-5, 31 MAY 2012 to 28 JUN 2012

SC-5, 31 MAY 2012 to 28 JUN 2012



	2700	WENPI	track 179°	HEBUR	track 267°	KEEDS
	↑	✦		✦		△
	* LNAV only.					
	BEBAY	JVIK				
	2000	089°	2000	089°	* 1.2 NM to RWY 09	
	VGSI and RNAV glidepath not coincident.					
	6.3 NM		4.6 NM		1.2 NM	
CATEGORY	A	B	C	D		
LPV DA	370-1		302 (400-1)		NA	
LNAV/VNAV DA	499-1½		431 (500-1½)		NA	
LNAV MDA	580-1	512 (600-1)		580-1½ 512 (600-1½)		NA
CIRCLING	620-1	552 (600-1)		620-1½ 552 (600-1½)		NA