

LOC I-AFA 111.3	APP CRS 275°	Rwy Idg 11690	27R 8865	27L 985
		TDZE 1026	985	999
		Apt Elev	1026	1026

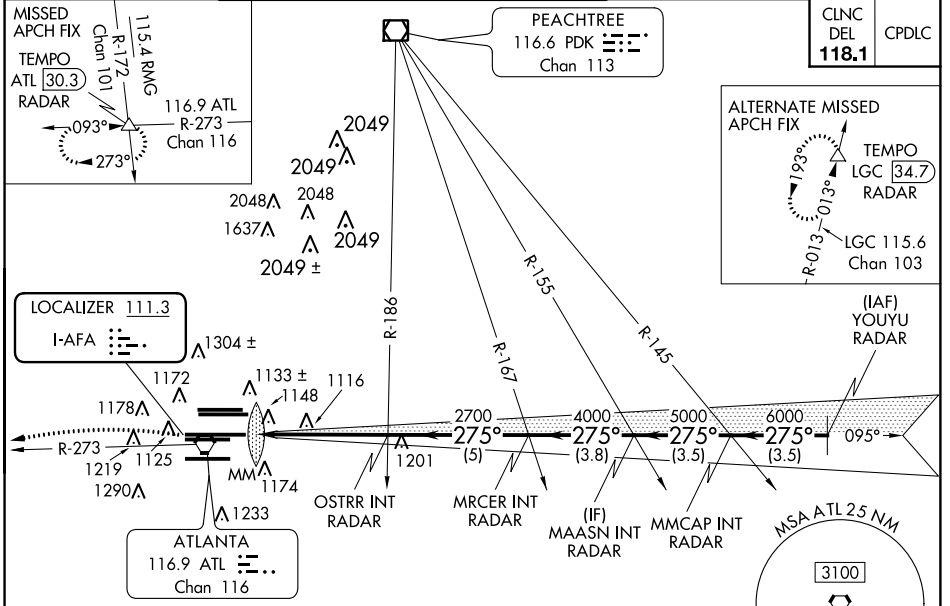
ILS or LOC RWY 27R

HARTSFIELD-JACKSON ATLANTA INTL (ATL)

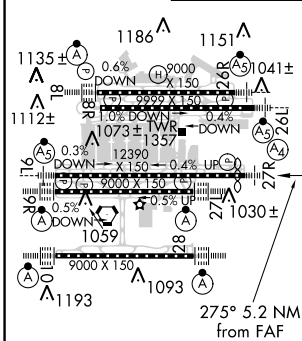
Simultaneous approach authorized with Rwy 26R or 26L or 28, or Rwy 26R and 28. Inop table does not apply to sidestep 27L. For inop MALS, increase S-LOC 27R Cat C and D to 1¾.

Rwy 27R MALS 	Rwy 27L ALSF-2 	MISSED APPROACH: Climb to 1400 then climbing left turn to 4000 on ATL VORTAC R-273 to TEMPO INT/ATL 30.3 DME/RADAR and hold.
---------------------	-----------------------	--

ATIS ARR 119.65	ATLANTA APP CON 127.9 379.9	ATLANTA TOWER 8L-26R 8R-26L 9L-27R 9R-27L 10-28 RWYS 119.1 125.325 123.85 119.3 119.5 254.4	ALL RWYS (8L-26R, 8R-26L) (9L-27R, 9R-27L) 10-28 RWYS 121.9 121.75 121.65 254.4	GND CON 10-28 RWYS 121.65 254.4
---------------------------	--	--	--	--



ELEV 1026	D TDZE 27R 985
	TDZE 27L 999

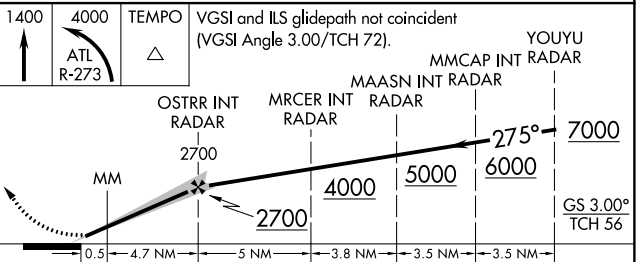


HIRL all Rwy
TDZ/CL Rwy 8L, 9R,
10, 26R, 27L and 28

FAF to MAP 5.2 NM

Knots	60	90	120	150	180
Min:Sec	5:12	3:28	2:36	2:05	1:44

RADAR REQUIRED



CATEGORY	A	B	C	D
S-ILS 27R	1185/40 200 (200-¾)			
S-LOC 27R	1420/40	435 (400-¾)	1420/55	435 (400-1¼)
SIDESTEP 27L	1420/55	421 (400-1¼)	1420-1½	421 (400-1½)

SE-4, 27 APR 2017 to 25 MAY 2017

SE-4, 27 APR 2017 to 25 MAY 2017