

VOR/DME DBL 113.0 Chan 77	APP CRS 164°	Rwy Idg TDZE Apt Elev 7820	N/A N/A 7820
---	------------------------	--	---------------------------

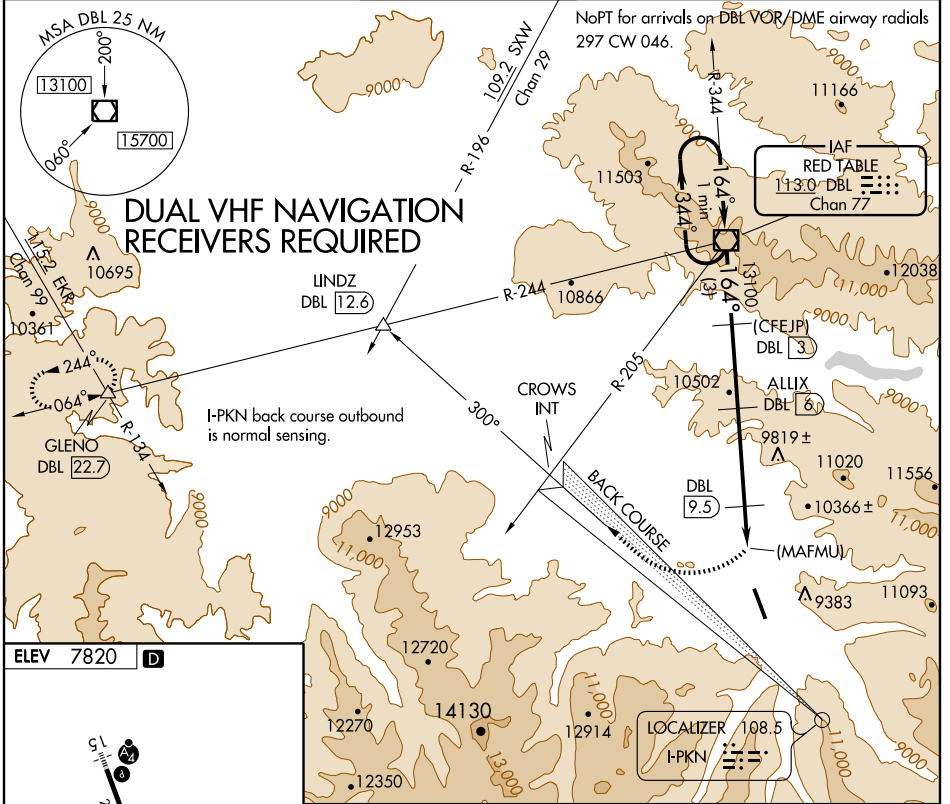
VOR/DME or GPS-C

ASPEN-PITKIN COUNTY/SARDY FIELD (A5E)

NA Obtain local altimeter setting on CTAF. When not received, procedure not authorized. Procedure not authorized at night.

MISSED APPROACH: Climbing right turn to 14000 via heading 300° to intercept and proceed via I-PKN northwest course (300°) and DBL VOR/DME R-244 to GLENO Int/DBL 22.7 DME and hold.

ATIS 120.4	ASPEN APP CON * 123.8 288.3	ASPEN TOWER * 118.85 (CTAF) 288.3	GND CON 121.9	CLNC DEL 123.75	UNICOM 122.95
----------------------	---------------------------------------	---	-------------------------	---------------------------	-------------------------



SW-1, 31 MAY 2012 to 28 JUN 2012

SW-1, 31 MAY 2012 to 28 JUN 2012

