

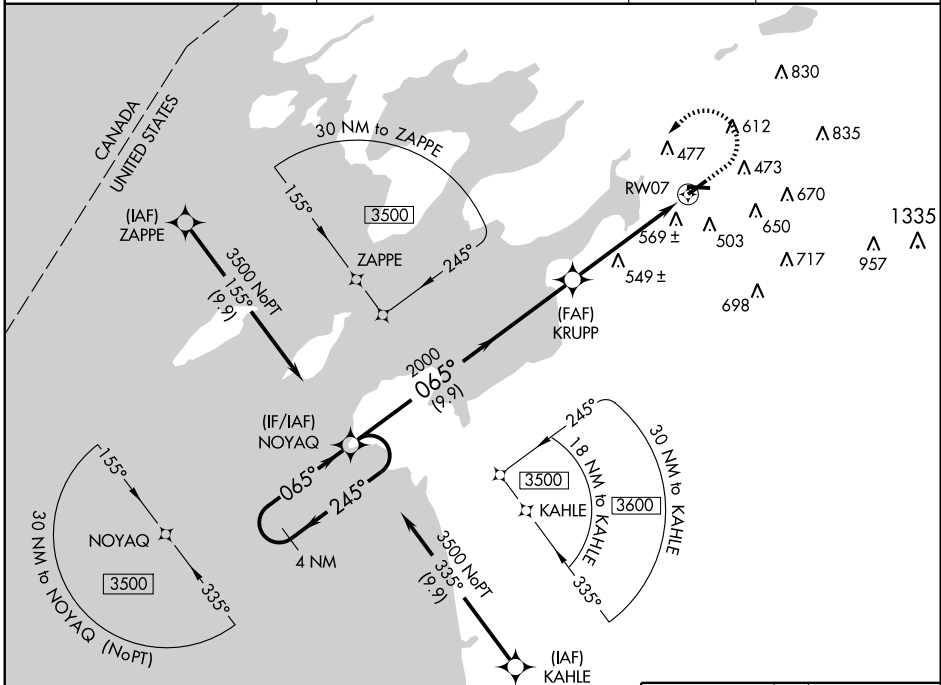
WAAS CH 82510 W07A	APP CRS 065°	Rwy Idg THRE 310 Apt Elev 325	4999
--	------------------------	---	-------------

RNAV (GPS) RWY 7

WATERTOWN INTL (ART)

<p>▼ When VGSI inop, Circling Rwy 10 NA at night. For uncompensated Baro-VNAV systems, LNAV/VNAV NA below -15°C (5°F) or above 41°C (105°F). DME/DME RNP-0.3 NA.</p> <p>▲</p>	<p>MALSR</p>	<p>MISSED APPROACH: Climb to 900 then climbing left turn to 3500 direct NOYAQ and hold.</p>
---	--------------	---

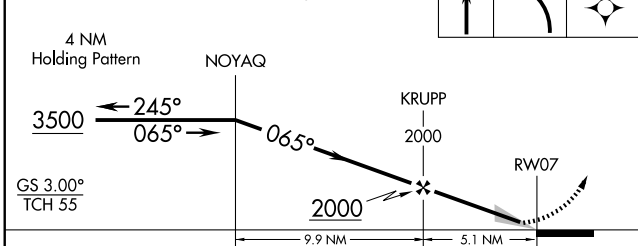
ASOS 132.325	WHEELER-SACK APP CON 128.25 257.6	CLNC DEL 120.8	UNICOM 123.0 (CTAF)
------------------------	---	--------------------------	-------------------------------



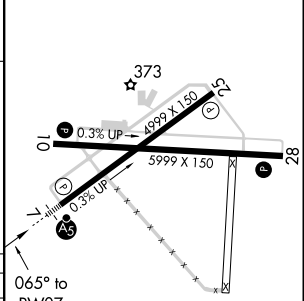
NE-2, 31 MAY 2012 to 28 JUN 2012

NE-2, 31 MAY 2012 to 28 JUN 2012

VGSI and RNAV glidepath not coincident (VGSI Angle 3.00/TCH 46).



ELEV	325	D	THRE	310
------	-----	----------	------	-----



CATEGORY	A	B	C	D
LPV DA		510-1/2	200 (200-1/2)	
LNAV/VNAV DA		881-1/2	571 (600-1/2)	
LNAV MDA	800-1/2	490 (500-1/2)	800-1	490 (500-1)
CIRCLING	960-1	635 (700-1)	980-1 3/4 655 (700-1 3/4)	1000-2 1/4 675 (700-2 1/4)

REIL Rwy 28	1
HIRL Rwy 7-25	1
MIRL Rwy 10-28	1