

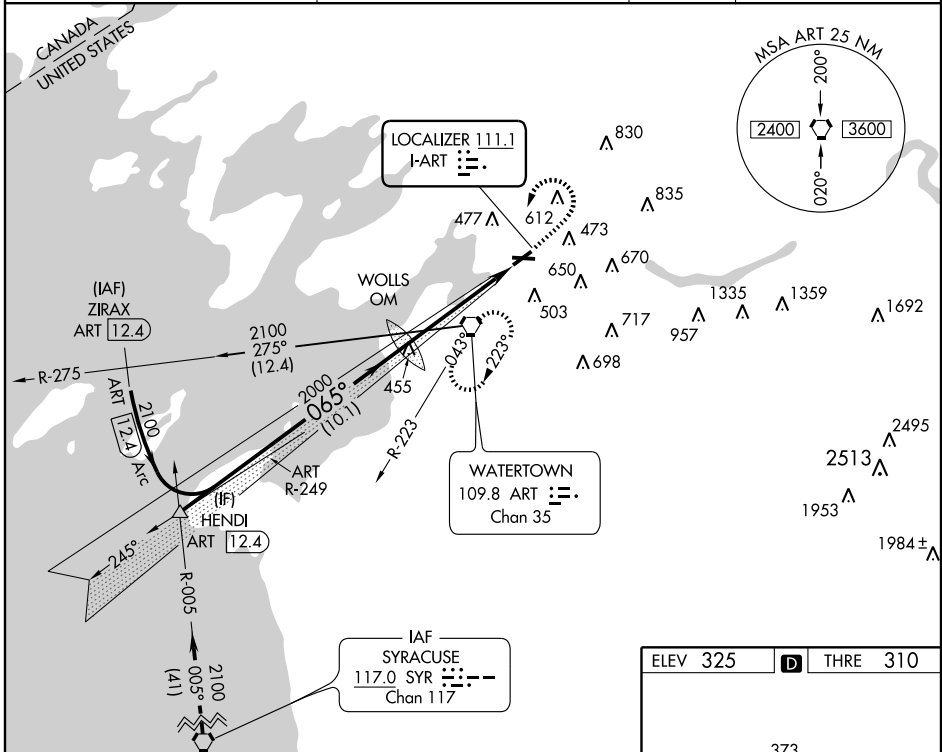
LOC I-ART 111.1	APP CRS 065°	Rwy Idg THRE Apt Elev	4999 310 325
---------------------------	------------------------	-----------------------------	---

ILS or LOC RWY 7

WATERTOWN INTL (ART)

<p>When VGSI inop, Circling Rwy 10 NA at night.</p>	<p>MALSR</p>	MISSED APPROACH: Climb to 900 then climbing left turn to 2400 direct ART VORTAC and hold.

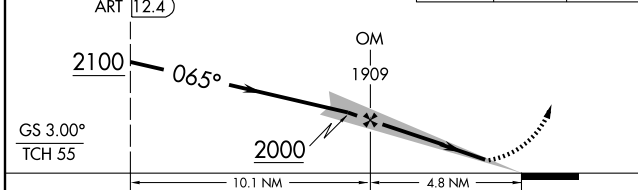
ASOS 132.325	WHEELER-SACK APP CON 128.25 257.6	CLNC DEL 120.8	UNICOM 123.0 (CTAF)
------------------------	---	--------------------------	-------------------------------



NE-2, 31 MAY 2012 to 28 JUN 2012

NE-2, 31 MAY 2012 to 28 JUN 2012

VGSI and ILS glidepath not coincident (VGSI Angle 3.00/TCH 46).



	A		B		C		D	
S-ILS 7	510-½		200 (200-½)					
S-LOC 7	760-½ 450 (500-½)		760-¾ 450 (500-¾)					
CIRCLING	960-1 635 (700-1)		980-1¼ 655 (700-1¼)		1000-2¼ 675 (700-2¼)			

ELEV 325		THRE 310
----------	--	----------

REIL Rwy 28

HIRL Rwy 7-25

MIRL Rwy 10-28

FAF to MAP 4.8 NM

Knots	60	90	120	150	180
Min:Sec	4:48	3:12	2:24	1:55	1:36