

SHFTY TWO ARRIVAL (RNAV)

FORT MYERS, FLORIDA

FORT MYERS APP CON ★
 126.8 343.75
 PAGE FIELD ATIS
 123.725
 SOUTHWEST FLORIDA INTL ATIS ★
 124.65

ALMA TRANSITION (AMG.SHFTY2):
DUNKN TRANSITION (DUNKN.SHFTY2):
HIBAC TRANSITION (HIBAC.SHFTY2):

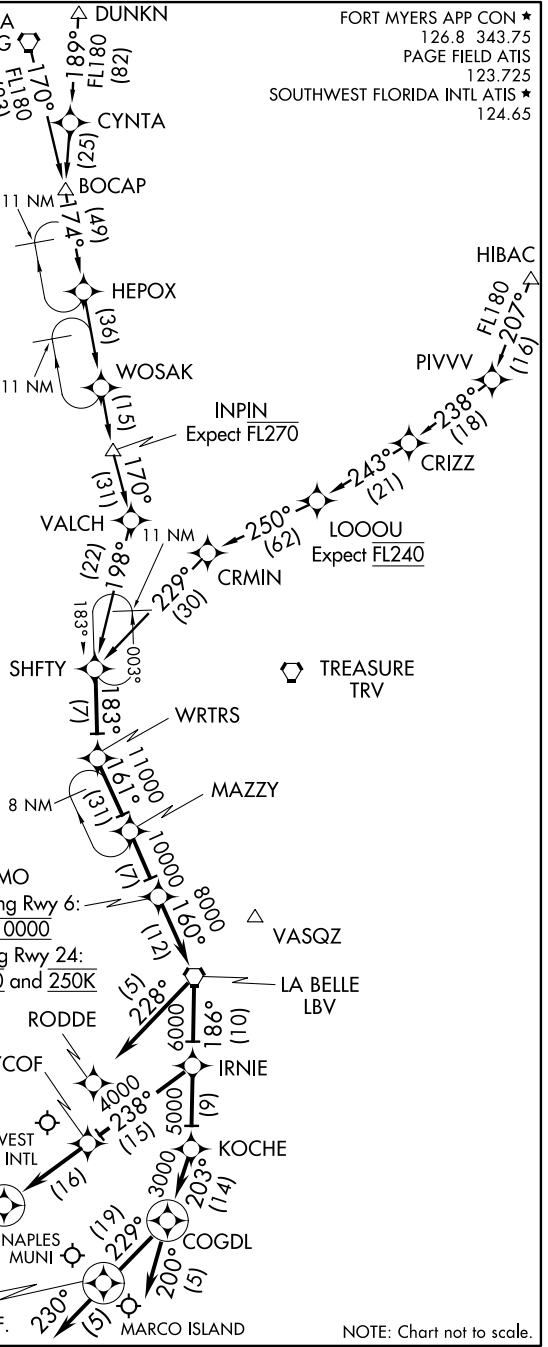
From over SHFTY via 183° track to WRTRS, then via 161° track to MAZZY, then via 161° track to MOEMO, then via 160° track to LBV VORTAC, thence....

Landing RSW Rwy 6 and FMY: From over LBV VORTAC via 186° track to IRNIE, then via 238° track to WYCOF, then via 238° track to PONTY, then via 240° heading. Expect radar vectors.

Landing RSW Rwy 24: From over LBV VORTAC via 228° heading. Expect radar vectors.

Landing APF: From over LBV VORTAC via 186° track to IRNIE, then via 186° track to KOCHE, then via 203° track to COGDL, then via 229° track to TIOFF, then via 230° heading. Expect radar vectors.

Landing MKY: From over LBV VORTAC via 186° track to IRNIE, then via 186° track to KOCHE, then via 203° track to COGDL, then via 200° heading. Expect radar vectors.



- NOTE: RADAR Required.
- NOTE: DME/DME/IRU or GPS Required.
- NOTE: RNAV 1.
- NOTE: Turbojet/Turboprop aircraft only.
- NOTE: For non-GPS equipped aircraft, LBV and RSW must be operational.

MOEMO
 RSW Landing Rwy 6:
 Expect 10000

RSW Landing Rwy 24:
 Expect 10000 and 250K

RODDE
 WYCOF
 PAGE FIELD

PONTY
 Expect 4000

TIOFF
 Aircraft Landing APF:
 Expect radar vectors prior to TIOFF.

MARCO ISLAND

NOTE: Chart not to scale.

SE-3, 08 JAN 2015 to 05 FEB 2015

SE-3, 08 JAN 2015 to 05 FEB 2015

SHFTY TWO ARRIVAL (RNAV)

FORT MYERS, FLORIDA