

WAAS CH 69314 W23A	APP CRS 227°	Rwy ldg TDZE Apt Elev	5000 8 8
--	------------------------	-----------------------------	-------------------------------------

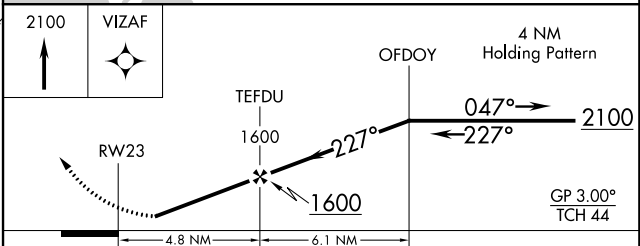
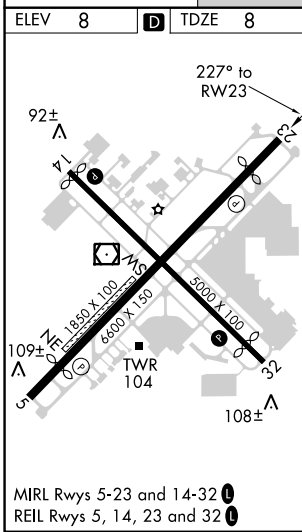
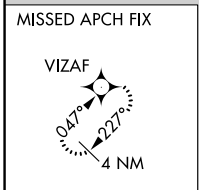
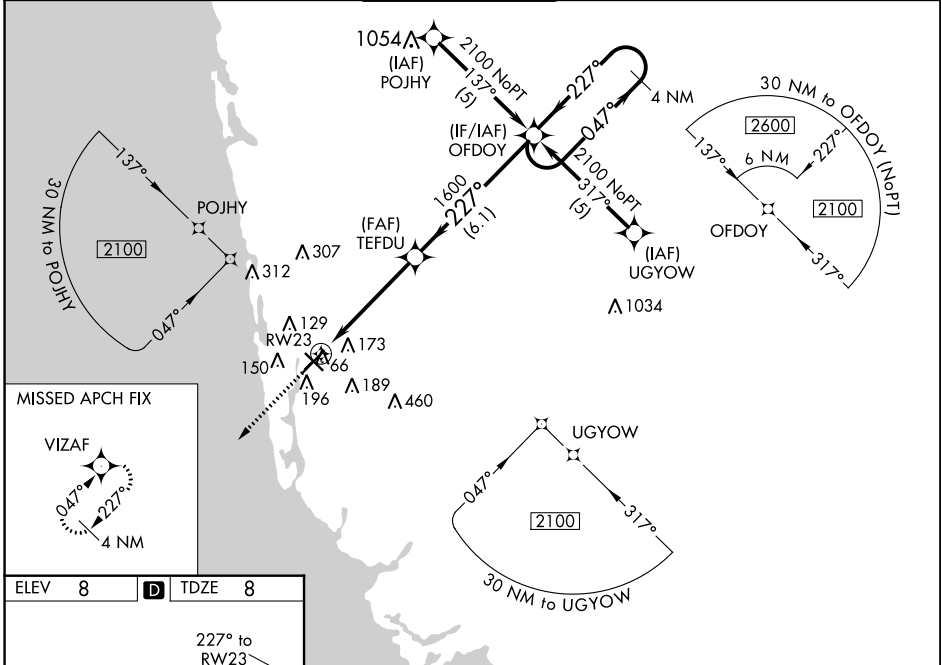
RNAV (GPS) RWY 23

NAPLES MUNI (APF)

⚠ Inoperative table does not apply. Baro-VNAV NA when using Southwest Florida Intl altimeter setting. For uncompensated Baro-VNAV systems, LNAV/VNAV NA below -15°C (5°F) or above 48°C (118°F). DME/DME RNP-0.3 NA. Visibility reduction by helicopters NA. When local altimeter setting not received, use Southwest Florida Intl altimeter setting and increase all DA 56 feet and all MDA 60 feet, increase LPV and LNAV/VNAV all Cats visibility ¼ mile.

MISSED APPROACH:
Climb to 2100 direct VIZAF and hold.

ATIS 134.225	FORT MYERS APP CON* 119.75 327.8	NAPLES TOWER* 128.5 (CTAF) 0	GND CON 121.6	NAPLES CLNC DEL 118.0
------------------------	--	--	-------------------------	---------------------------------



CATEGORY	A	B	C	D
LPV DA	313-1		305 (400-1)	
LNAV/VNAV DA	461-1½		453 (500-1½)	
LNAV MDA	440-1	432 (500-1)	440-1¼ 432 (500-1¼)	440-1½ 432 (500-1½)
CIRCLING	500-1	492 (500-1)	500-1½ 492 (500-1½)	560-2 552 (600-2)

SE-3, 27 APR 2017 to 25 MAY 2017

SE-3, 27 APR 2017 to 25 MAY 2017