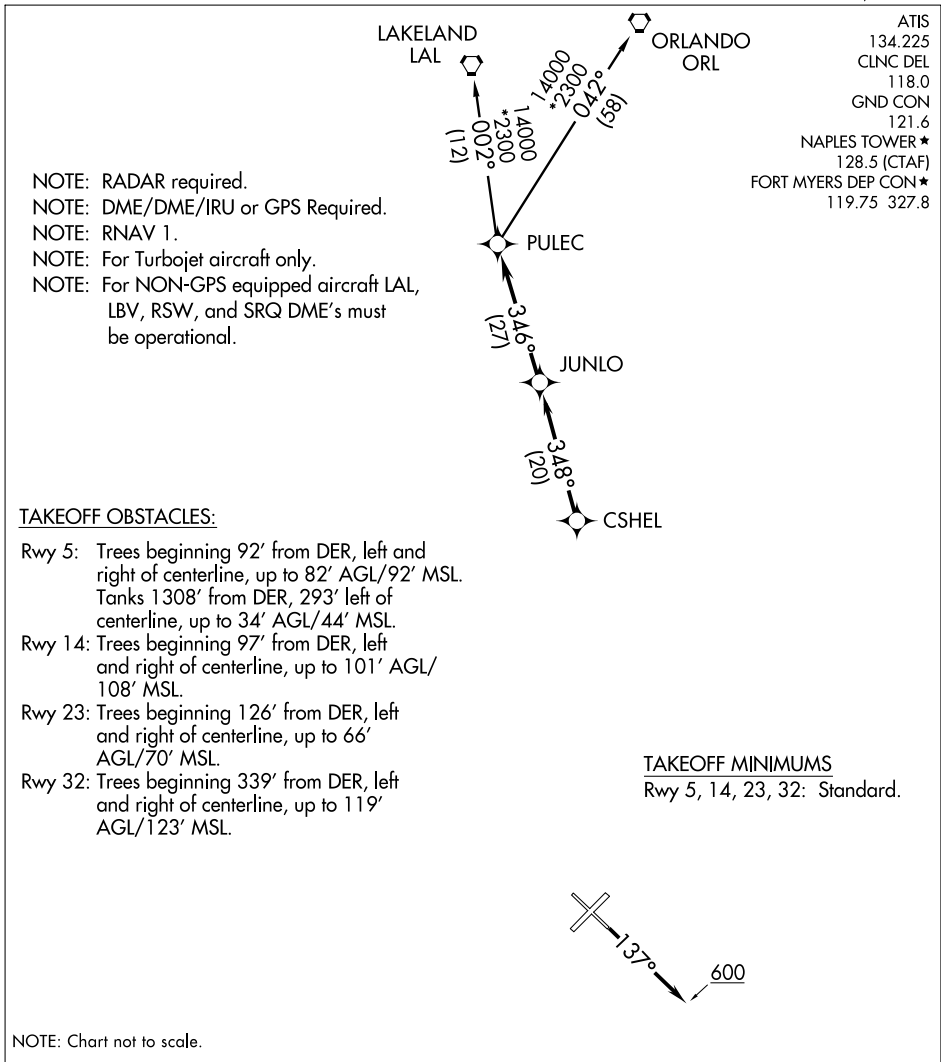


(CSHEL4.CSHEL) 10042

SL-6020 (FAA)

NAPLES MUNI (APF)
NAPLES, FLORIDA

CSHEL FOUR DEPARTURE (RNAV)



SE-3, 08 JAN 2015 to 05 FEB 2015

SE-3, 08 JAN 2015 to 05 FEB 2015

DEPARTURE ROUTE DESCRIPTION

TAKEOFF RUNWAY 5, 23, 32: Climb on assigned heading for radar vectors to CSHEL, then via depicted route to PULEC, thence....

TAKEOFF RUNWAY 14: Climb heading 137° to 600, then via radar vectors to CSHEL, then via depicted route to PULEC, thence....

....via (transition). Maintain 2000 or as assigned by ATC, expect filed altitude/flight level 10 minutes after departure.

LAKELAND TRANSITION (CSHEL4.LAL):

ORLANDO TRANSITION (CSHEL4.ORL):

CSHEL FOUR DEPARTURE (RNAV)
(CSHEL4.CSHEL) 10042

NAPLES, FLORIDA
NAPLES MUNI (APF)