

VORTAC	SGD	APP CRS	Rwy Idg	5007
112.1		050°	THRE	14
Chan 58			Apt Elev	35

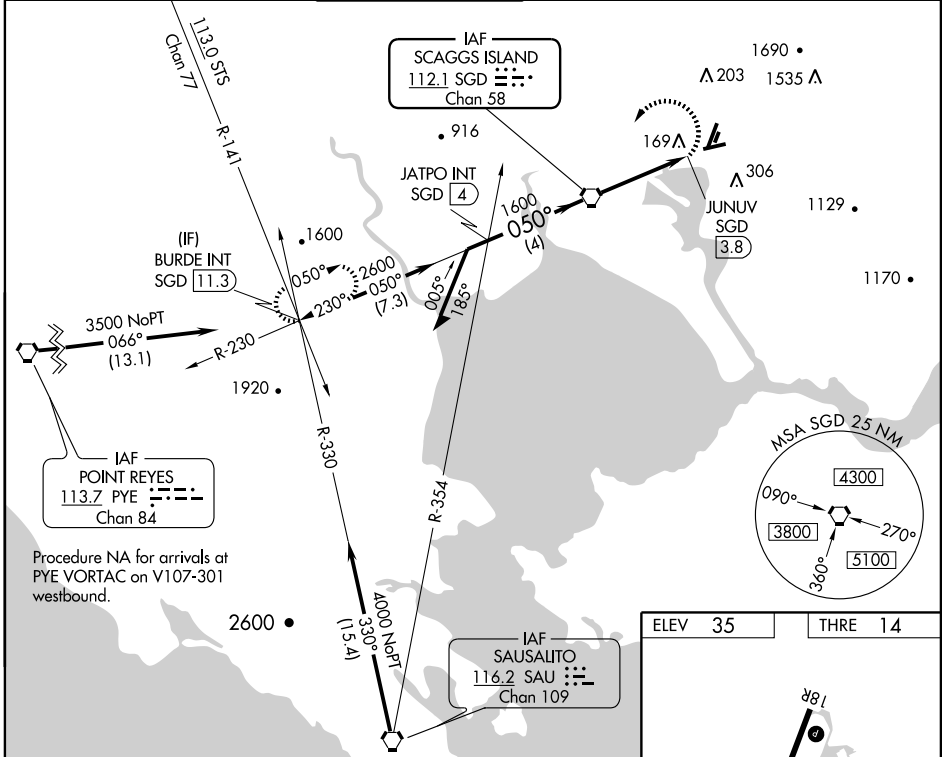
# VOR RWY 6

NAPA COUNTY (APC)

**⚠** Circling NA northeast of Rwy 18R and 24. Visibility reduction by helicopters NA.  
**⚠** When local altimeter setting not received, use Concord altimeter setting and increase all MDA 60 feet and Circling Cat C visibility 1/4 mile. VDP NA with Concord altimeter setting.

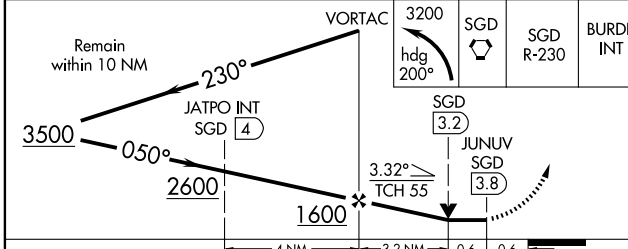
**MISSED APPROACH:** Climbing left turn to 3200 on heading 200° to SGD VORTAC R-230 to BURDE INT/SGD 11.3 DME and hold.

ATIS <b>124.05</b>	OAKLAND CENTER <b>127.8 353.5</b>	NAPA TOWER ★ <b>118.7 (CTAF) 257.8</b>	GND CON <b>121.7</b>	CLNC DEL <b>127.85</b>	UNICOM <b>122.95</b>
-----------------------	--------------------------------------	---	-------------------------	---------------------------	-------------------------

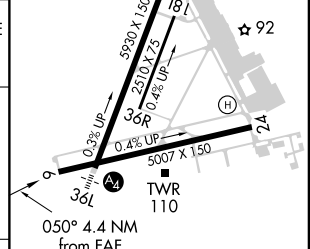


SW-2, 31 MAY 2012 to 28 JUN 2012

SW-2, 31 MAY 2012 to 28 JUN 2012



ELEV 35	THRE 14
---------	---------



CATEGORY	A	B	C	D
S-6	460-1	446 (500-1)	460-1 3/8	446 (500-1 3/8)
CIRCLING	600-1 565 (600-1)	620-1 585 (600-1)	720-2 685 (700-2)	1240-3 1205 (1300-3)

REIL Rwy 6				
MIRL Rwy 6-24 and 18R-36L				
FAF to MAP 3.8 NM				
Knots	60	90	120	150
Min:Sec	3:48	2:32	1:54	1:31