

WAAS CH <b>56613</b> <b>W36A</b>	APP CRS <b>006°</b>	Rwy Idg THRE <b>14</b> Apt Elev <b>35</b>
--	------------------------	--

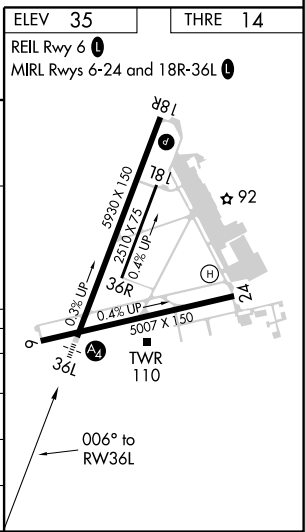
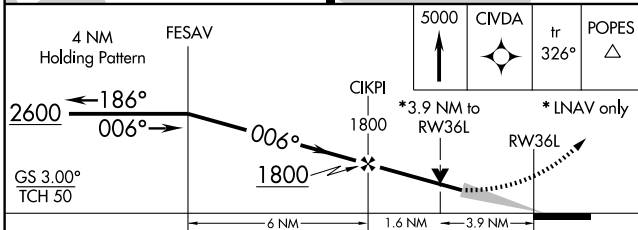
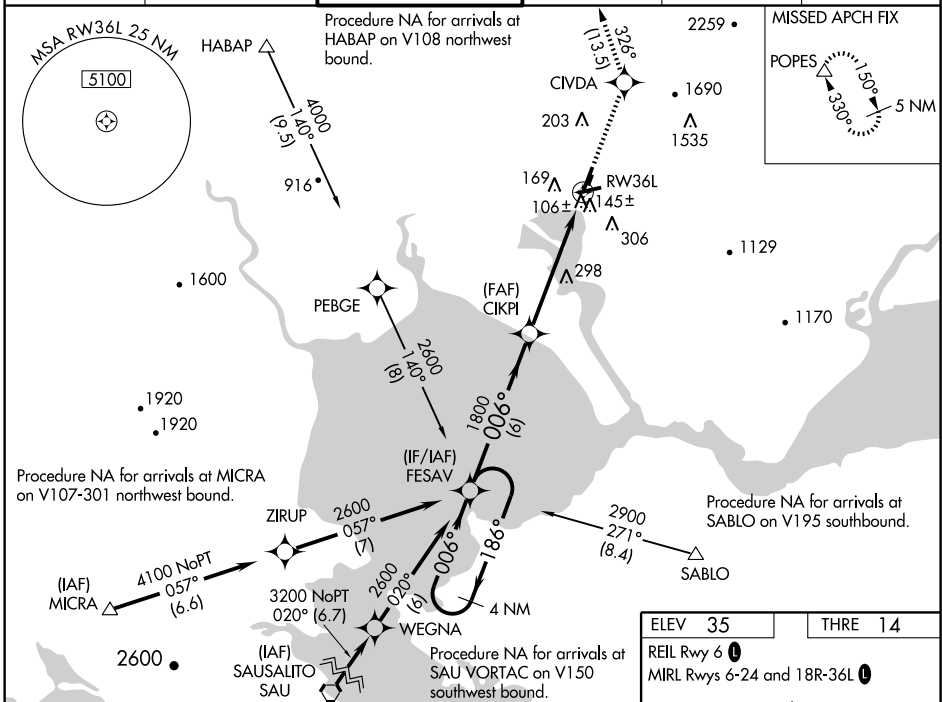
# RNAV (GPS) Y RWY 36L

NAPA COUNTY (APC)

**⚠** Inoperative table does not apply. For uncompensated Baro-VNAV systems, LNAV/VNAV NA below -15°C (5°F) or above 43°C (109°F). DME/DME RNP-0.3 NA. When local altimeter setting not received, use Concord altimeter setting and increase all DA 41 feet, all MDA 60 feet. VDP and Baro-VNAV NA when using Concord altimeter setting.

**⚠** MISSED APPROACH: Climb to 5000 direct CIVDA and on track 326° to POPES and hold, continue climb-in-hold to 5000.

ATIS <b>124.05</b>	OAKLAND CENTER <b>127.8 353.5</b>	NAPA TOWER ★ <b>118.7 (CTAF) 0 257.8</b>	GND CON <b>121.7</b>	CLNC DEL <b>127.85</b>	UNICOM <b>122.95</b>
-----------------------	--------------------------------------	---	-------------------------	---------------------------	-------------------------



CATEGORY	A	B	C	D
LPV DA		1246-5	1232 (1300-5)	
LNAV/VNAV DA		1039-4	1025 (1100-4)	
LNAV MDA	1300-1¼	1286 (1300-1¼)	1300-3	1286 (1300-3)
CIRCLING	1300-1¼ 1265 (1300-1¼)	1300-1½ 1265 (1300-1½)	1300-3	1265 (1300-3)

SW-2, 31 MAY 2012 to 28 JUN 2012

SW-2, 31 MAY 2012 to 28 JUN 2012