

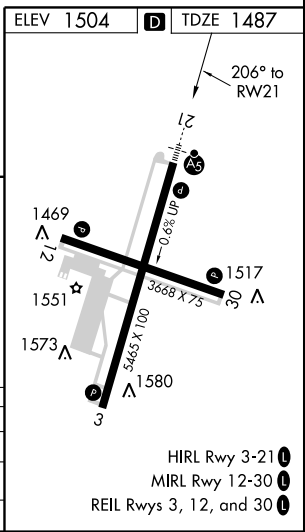
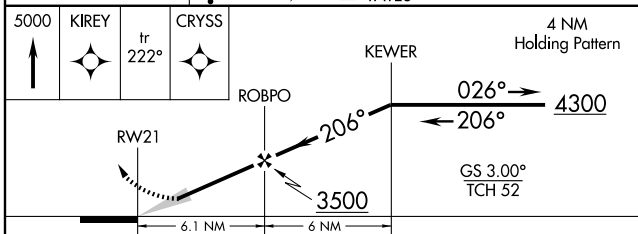
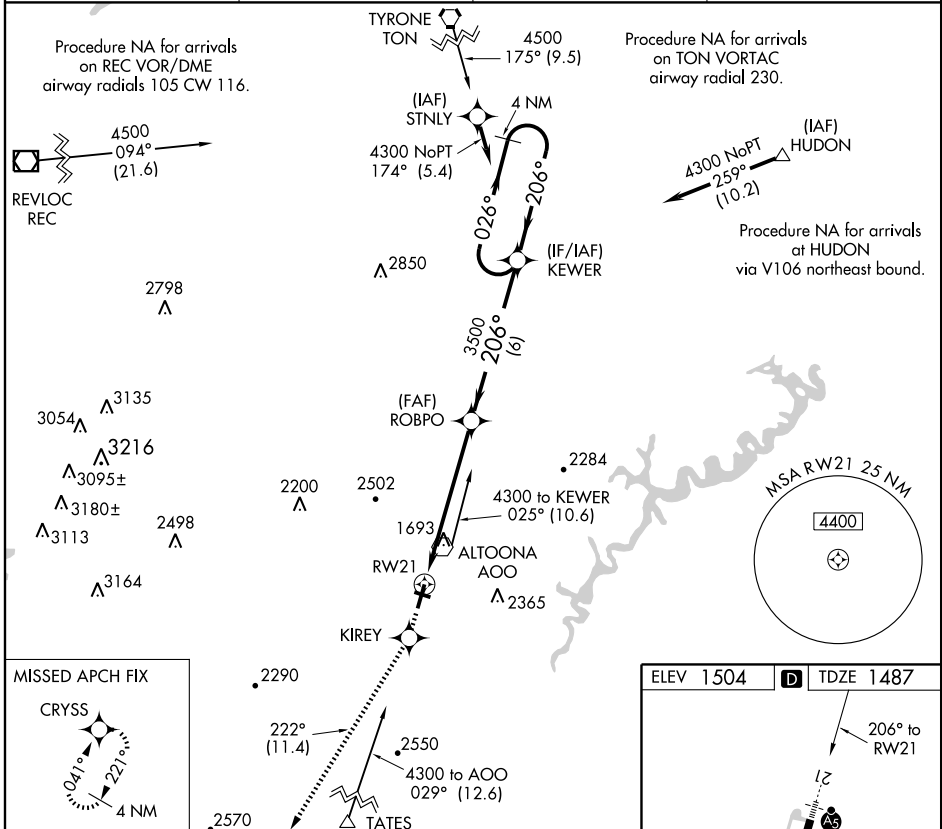
RNAV (GPS) Z RWY 21

ALTOONA-BLAIR COUNTY (A00)

WAAS CH 90105 W21A	APP CRS 206°	Rwy Idg TDZE Apt Elev	5465 1487 1504
--	------------------------	-----------------------------	---

▽ DME/DME RNP-0.3 NA. For inoperative MALSR, increase LPV Cat A-D visibility to 1¼ mile.	MALSR 	MISSED APPROACH: Climb to 5000 direct KIREY and via 222° track to CRYSS and hold, continue climb-in-hold to 5000.
---	------------------	--

ASOS 127.125	JOHNSTOWN APP CON ★ 135.975 244.875	ALTOONA RADIO 123.6	CTAF 123.6
------------------------	---	-------------------------------	-------------------



CATEGORY	A	B	C	D
LPV DA	1800-¾ 313 (400-¾)			
LNAV/VNAV DA	NA			
LNAV MDA	NA			

NE-4, 31 MAY 2012 to 28 JUN 2012

NE-4, 31 MAY 2012 to 28 JUN 2012