

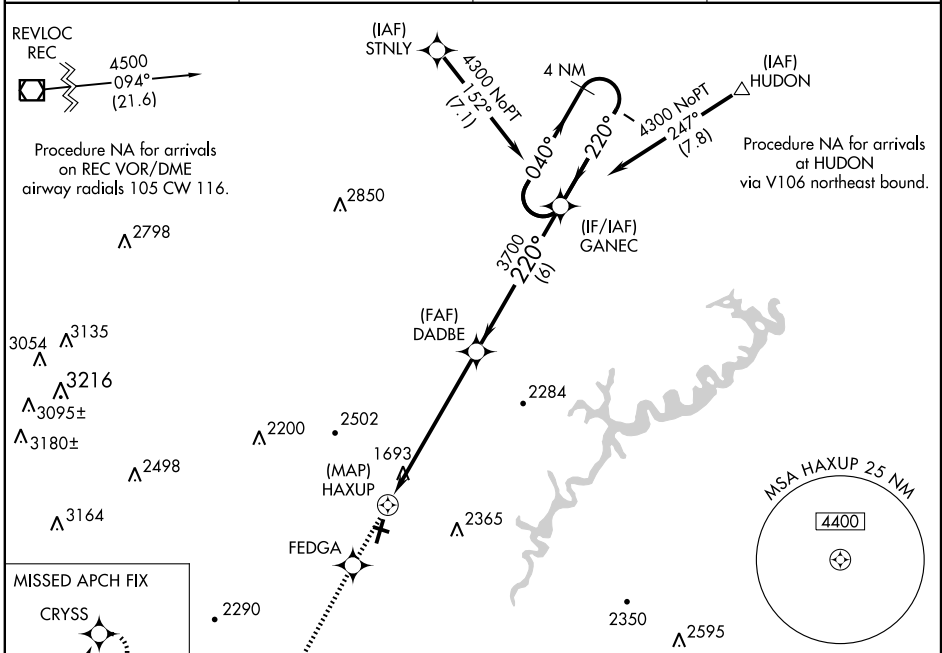
RNAV (GPS) Y RWY 21

ALTOONA-BLAIR COUNTY (A00)

APP CRS	Rwy Idg	5465
220°	TDZE	1487
	Apt Elev	1504

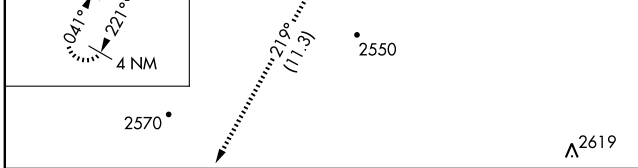
<p>▼ DME/DME RNP-0.3 NA. Circling to Rwy 30 NA at night. ▲ For inoperative MALSR, increase LNAV Cats A and B visibility to 1 mile.</p>	<p>MALSR </p>	<p>MISSED APPROACH: Climb to 5000 direct FEDGA and via 219° track to CRYSS and hold, continue climb-in-hold to 5000.</p>
---	---------------	--

ASOS 127.125	JOHNSTOWN APP CON * 135.975 244.875	ALTOONA RADIO 123.6	CTAF 123.6
------------------------	---	-------------------------------	-------------------

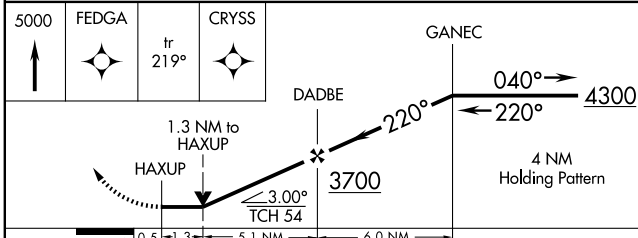
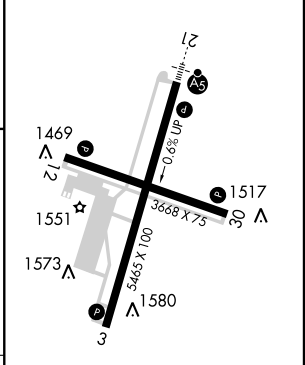


NE-4, 31 MAY 2012 to 28 JUN 2012

NE-4, 31 MAY 2012 to 28 JUN 2012



ELEV 1504	D TDZE 1487
-----------	--------------------



CATEGORY	A	B	C	D
LNAV MDA	2080- $\frac{3}{4}$ 593 (600- $\frac{3}{4}$)		2080-1 593 (600-1)	2080-1 $\frac{1}{4}$ 593 (600-1 $\frac{1}{4}$)
CIRCLING	2080-1 576 (600-1)		2080-1 $\frac{1}{2}$ 576 (600-1 $\frac{1}{2}$)	2620-3 1116 (1200-3)

HIRL Rwy 3-21 **1**
 MIRL Rwy 12-30 **1**
 REIL Rws 3, 12, and 30 **1**