

ALTOONA, PENNSYLVANIA

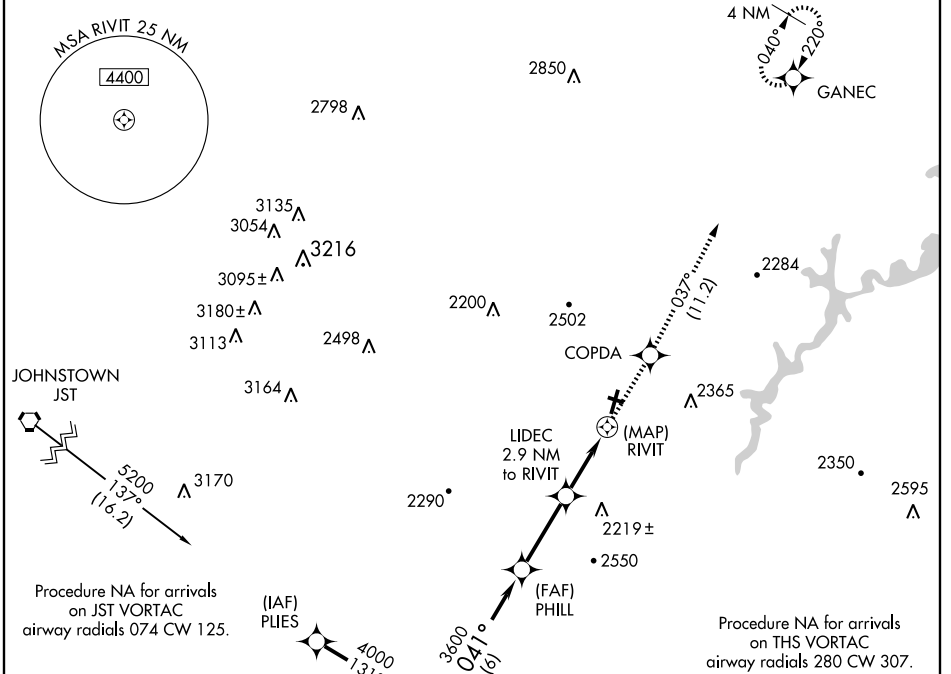
AL-100 (FAA)

# RNAV (GPS) RWY 3

ALTOONA-BLAIR COUNTY (A00)

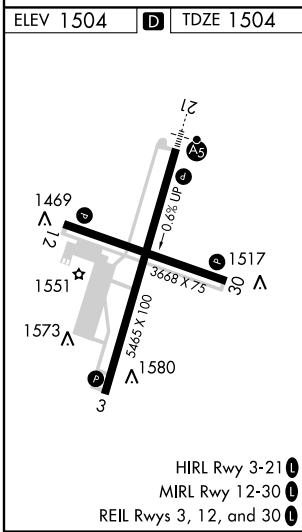
APP CRS <b>041°</b>	Rwy Idg <b>5465</b>
	TDZE <b>1504</b>
	Apt Elev <b>1504</b>

DME/DME RNP-0.3 NA.		MISSED APPROACH: Climb to 5000 direct COPDA and via 037° track to GANEC and hold.	
ASOS <b>127.125</b>	JOHNSTOWN APP CON ★ <b>135.975 244.875</b>	ALTOONA RADIO <b>123.6</b>	CTAF ① <b>123.6</b>



NE-4, 31 MAY 2012 to 28 JUN 2012

NE-4, 31 MAY 2012 to 28 JUN 2012



5000	COPDA	GANEC	PHILL	CRYSS
↑	✧	tr 037°	✧	✧
	RIVIT	LIDEC 2.9 NM to RIVIT	PHILL	CRYSS
			3600	4000
		2620 ≤ 3.00° TCH 43		Procedure Turn NA
	0.5	2.9	3.1 NM	6 NM
CATEGORY	A	B	C	D
LNNAV MDA	2340-1 836 (900-1)	2340-1½ 836 (900-1½)	2340-2½ 836 (900-2½)	2340-2¾ 836 (900-2¾)
CIRCLING	2340-1 836 (900-1)	2340-1½ 836 (900-1½)	2340-2½ 836 (900-2½)	2620-3 1116 (1200-3)

ALTOONA, PENNSYLVANIA  
Orig 12040

40°18'N-78°19'W

# RNAV (GPS) RWY 3