

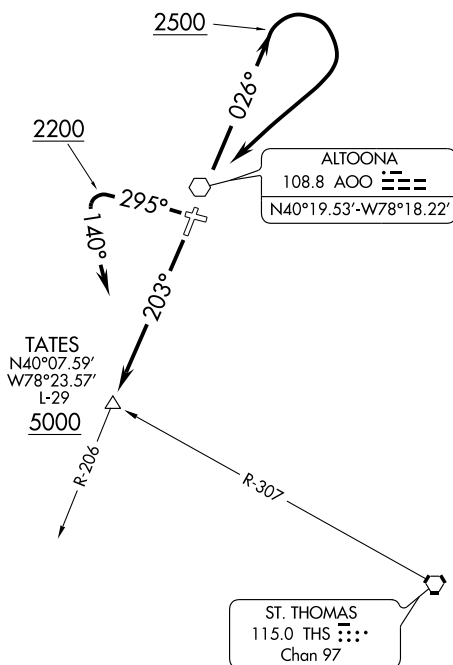
(TATES3.TATES) 12040

SL-100 (FAA)

ALTOONA-BLAIR COUNTY (A00)
ALTOONA, PENNSYLVANIA

TATES THREE DEPARTURE

ASOS
127.125
JOHNSTOWN APP CON ★
135.975 244.875
CTAF
123.0
ALTOONA RADIO
123.6



TAKEOFF MINIMUMS:

Rwy 12: NA - Obstacles.

Rwy 3: Standard.

Rwy 21: Standard with minimum climb of 350' per NM to 5000.

Rwy 30: Standard with the following minimum climb requirements: Obstacle climb of 210' per NM to 2500; ATC climb of 250' per NM to 5000.

TAKEOFF OBSTACLES:

Rwy 3: Numerous trees 1537' from DER, 904' left of centerline, 100' AGL/1554' MSL.
Numerous trees 5759' from DER, 1600' right of centerline, 100' AGL/1642' MSL.

Rwy 21: Numerous trees 2541' from DER, 369' left of centerline, 100' AGL/1583' MSL.
Numerous trees 1080' from DER, 511' right of centerline, 100' AGL/1550' MSL.

NOTE: Chart not to scale.



DEPARTURE ROUTE DESCRIPTION

TAKEOFF RUNWAY 3: Climb direct AOO VOR, then via AOO R-026 to 2500, then climbing right turn direct AOO VOR, then via AOO R-206 to TATES INT. . . .

TAKEOFF RUNWAY 21: Climb via heading 203° and AOO R-206 to TATES INT. . . .

TAKEOFF RUNWAY 30: Climb via heading 295° to 2200, then climbing left turn heading 140° to intercept AOO R-206 to TATES INT. . . .

. . . .Cross TATES INT at or above 5000. Then via (assigned route).

TATES THREE DEPARTURE

(TATES3.TATES) 12040

ALTOONA, PENNSYLVANIA
ALTOONA-BLAIR COUNTY (A00)

NE-4, 31 MAY 2012 to 28 JUN 2012

NE-4, 31 MAY 2012 to 28 JUN 2012