


LOM AN <b>211</b>	APP CRS <b>050°</b>	Rwy Idg <b>7000</b>
		THRE <b>595</b>
		Apt Elev <b>612</b>

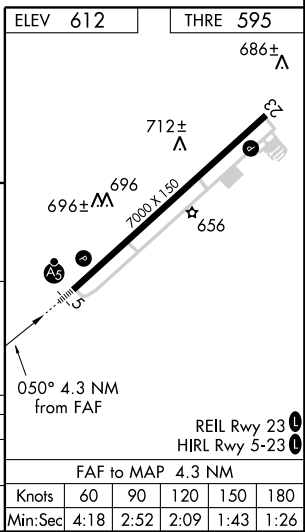
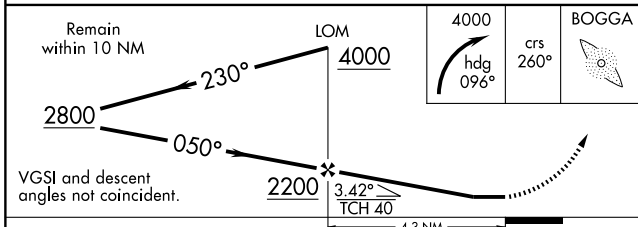
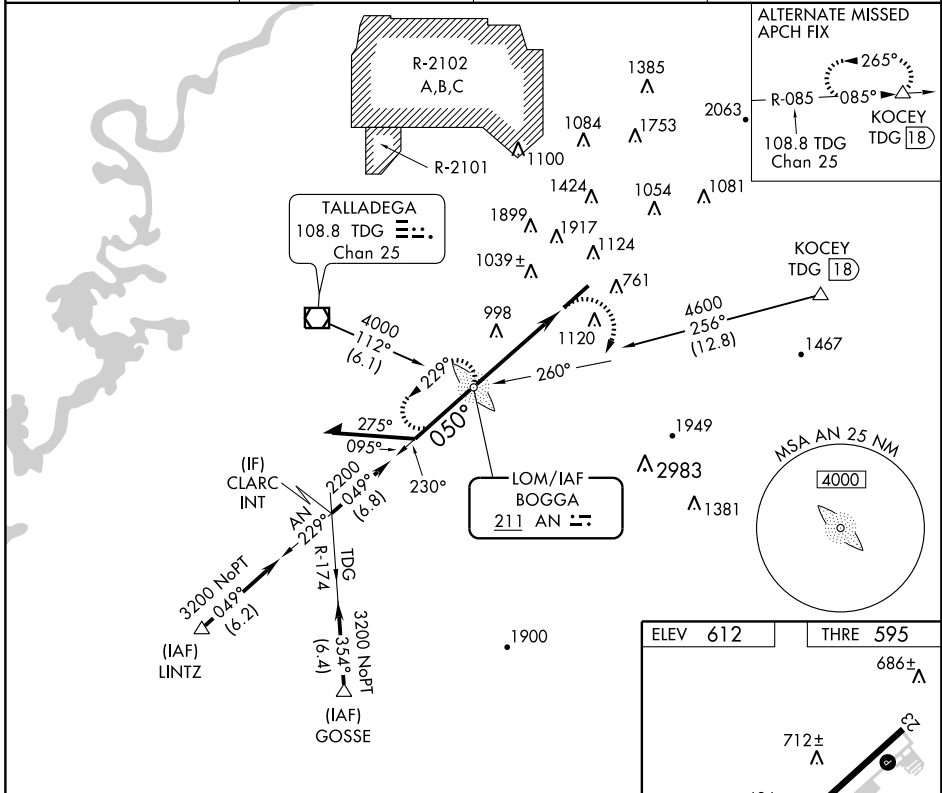
# NDB RWY 5

ANNISTON RGNL (ANB)

**⚠** When local altimeter setting not received, use Gadsden altimeter setting and increase all MDAs 80 feet. For inop MALSr when using local altimeter and Gadsden altimeter setting, increase S-5 Cat D visibility to 3. Circling NA north of Rwy 5-23.

**MALSr**  
  
**MISSED APPROACH:** Climbing right turn to 4000 via heading 096° and 260° course to BOGGA LOM and hold.

ASOS <b>119.675</b>	BIRMINGHAM APP CON <b>125.45 381.5</b>	CTAF <b>123.60</b>	UNICOM <b>123.0</b>
------------------------	---	-----------------------	------------------------



CATEGORY	A	B	C	D
S-5	1600-1 1005 (1000-1)	1600-1¼ 1005 (1000-1¼)	1600-2½	1005 (1000-2½)
CIRCLING	1600-1¼ 988 (1000-1¼)	1600-1½ 988 (1000-1½)	1600-3	988 (1000-3)

SE-4, 31 MAY 2012 to 28 JUN 2012

SE-4, 31 MAY 2012 to 28 JUN 2012