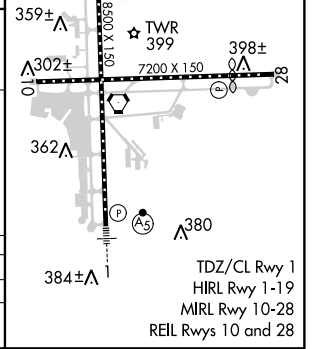
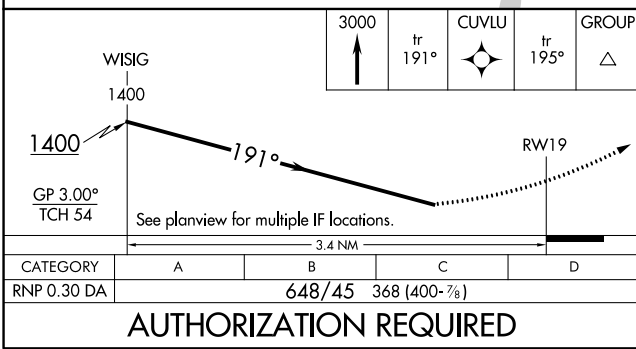
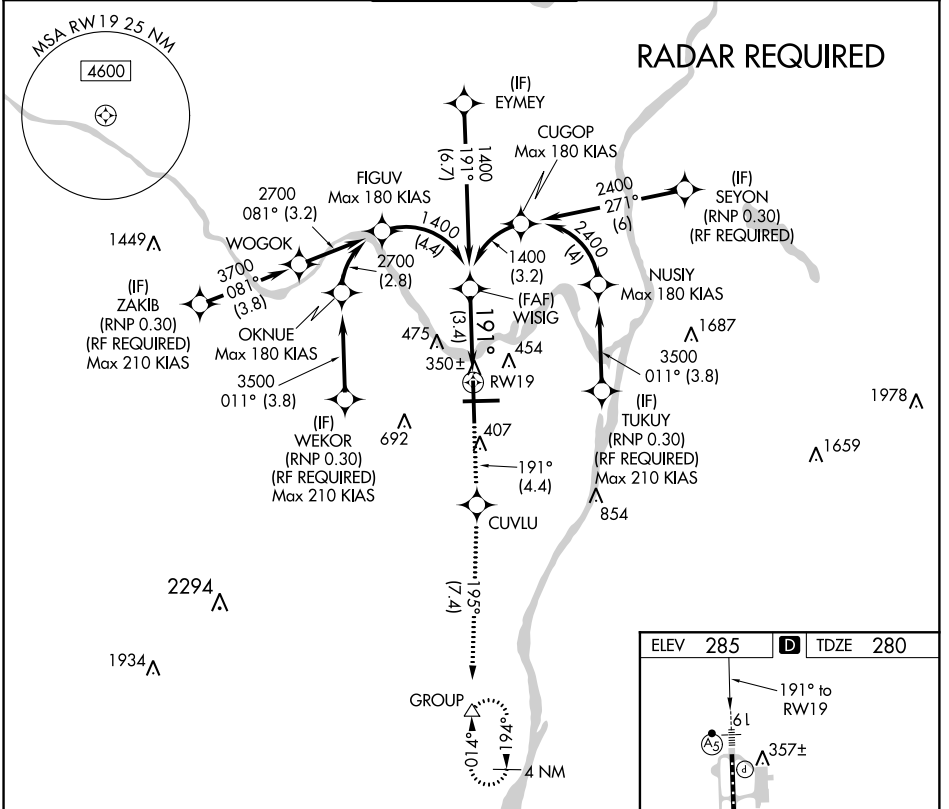


APP CRS	Rwy Idg	8500
191°	TDZE	280
	Apt Elev	285

RNAV (RNP) Z RWY 19

ALBANY INTL (ALB)

GPS required. For uncompensated Baro-VNAV systems, procedure NA below -15°C (3°F) or above 47°C (117°F). For inoperative MALS, increase RNP 0.30 visibility to 1½.	MALSR 	MISSED APPROACH: Climb to 3000 on track 191° to CUVLU and on track 195° to GROUP and hold.		
			D-ATIS 120.45	ALBANY APP CON 132.825 307.2



NE-2, 12 OCT 2017 to 09 NOV 2017

NE-2, 12 OCT 2017 to 09 NOV 2017

AUTHORIZATION REQUIRED

CATEGORY	A	B	C	D
RNP 0.30 DA		648/45	368 (400-7/8)	