

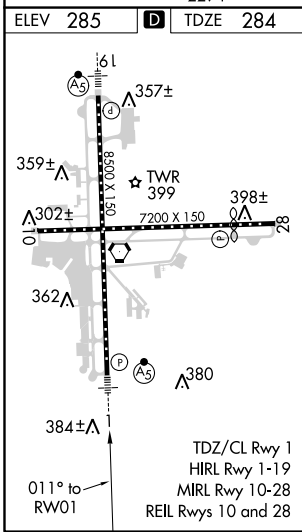
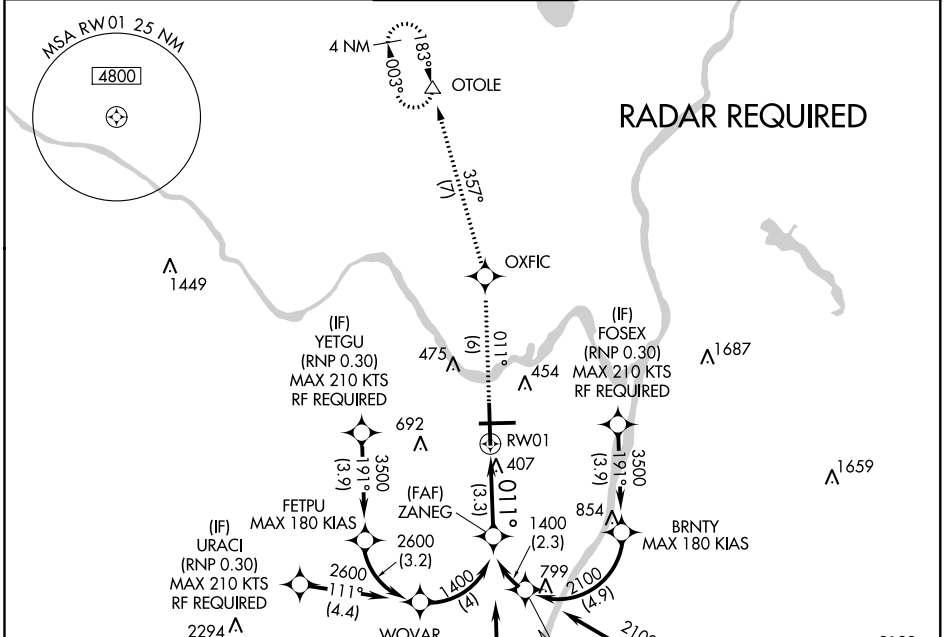
APP CRS 011°	Rwy Idg TDZE Apt Elev	8500 284 285
------------------------	-----------------------------	---

RNAV (RNP) Z RWY 1

ALBANY INTL (ALB)

<p>▼ GPS required. For uncompensated Baro-VNAV systems, procedure NA below -15°C (3°F) or above 47°C (117°F). For inoperative MALSR, increase RNP 0.15 visibility to 1½ and RNP 0.30 visibility to 1½.</p>	MALSR	<p>MISSED APPROACH: Climb to 3000 on track 011° to OXFIC and on track 357° to OTOLE and hold.</p>

D-ATIS 120.45	ALBANY APP CON 132.825 307.2	ALBANY TOWER 119.5 257.8	GND CON 121.7 348.6	CLNC DEL 127.50
-------------------------	--	------------------------------------	-------------------------------	---------------------------



3000	OXFIC	OTOLE	ZANEG
↑	tr 011°	tr 357°	1400
See planview for multiple IF locations.			
RW01			GP 3.00° TCH 56

CATEGORY	A	B	C	D
RNP 0.15 DA		656/40	372 (400-¾)	
RNP 0.30 DA		727/50	443 (500-1)	

AUTHORIZATION REQUIRED

NE-2, 12 OCT 2017 to 09 NOV 2017

NE-2, 12 OCT 2017 to 09 NOV 2017