

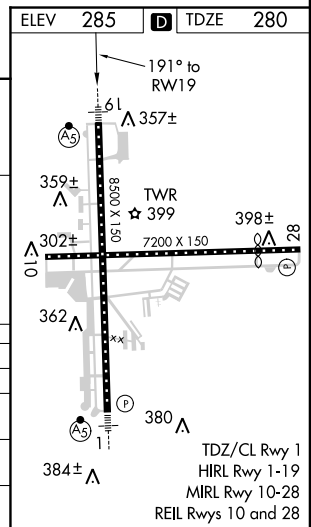
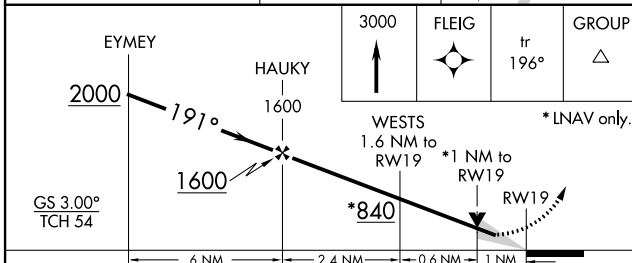
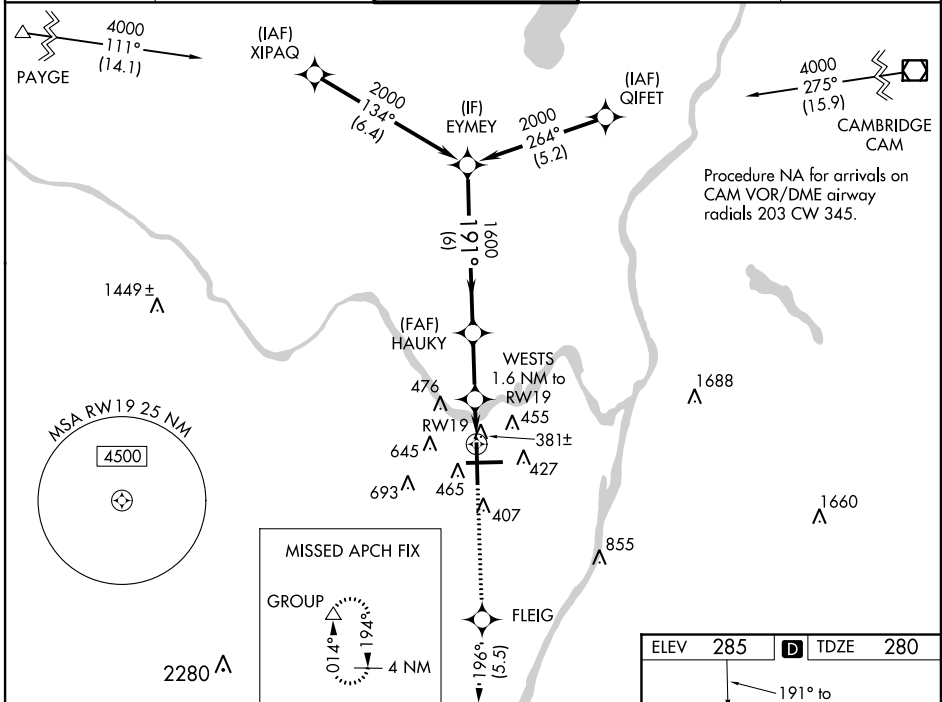
WAAS CH 56302 W19A	APP CRS 191°	Rwy Idg 8500 TDZE 280 Apt Elev 285
--	------------------------	---

RNAV (GPS) Y RWY 19

ALBANY INTL (ALB)

<p>⚠ For uncompensated Baro-VNAV systems, LNAV/VNAV NA below -5°C (23°F) or above 54°C (130°F). For inoperative MALSR, increase LNAV Cats C/D visibility to RVR 5500. Circling NA west of Rwy 1-19. DME/DME RNP-0.3 NA.</p>	<p>MALSR</p>	<p>MISSED APPROACH: Climb to 3000 direct FLEIG and on track 196° to GROUP and hold.</p>
	<p>Procedure NA for arrivals on CAM VOR/DME airway radials 203 CW 345.</p>	

ATIS 120.45	ALBANY APP CON 132.825 307.2	ALBANY TOWER 119.5 257.8	GND CON 121.7 348.6	CLNC DEL 127.50
-----------------------	--	------------------------------------	-------------------------------	---------------------------



CATEGORY	A	B	C	D
LPV DA	480/24 200 [200-½]			
LNAV/VNAV DA	590/24 310 (400-½)			
LNAV MDA	640/24 360 (400-½)	640/30 360 (400-⅝)		
C CIRCLING	820-1 535 (600-1)	820-1½ 535 (600-1½)		960-2¼ 675 (700-2¼)

NE-2, 08 JAN 2015 to 05 FEB 2015

NE-2, 08 JAN 2015 to 05 FEB 2015