

WAAS CH 78124 W28A	APP CRS 281°	Rwy Idg TDZE Apt Elev	6007 285 285
--	------------------------	-----------------------------	---

RNAV (GPS) RWY 28

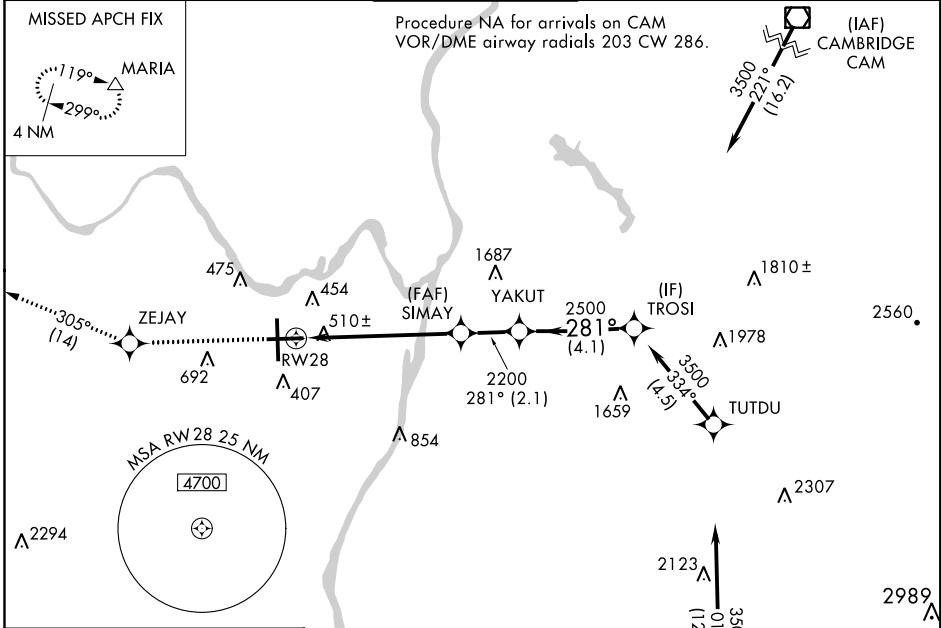
ALBANY INTL (ALB)



For uncompensated Baro-VNAV systems, LNAV/VNAV NA below -18°C (0°F) or above 42°C (107°F). Circling NA west of Rwy 1-19. DME/DME RNP-0.3 NA. Helicopter visibility reduction below 3/4 SM NA.

MISSED APPROACH: Climb to 3500 direct ZEJAY and on track 305° to MARIA and hold.

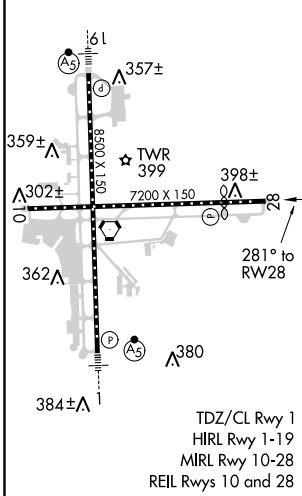
D-ATIS 120.45	ALBANY APP CON 132.825 307.2	ALBANY TOWER 119.5 257.8	GND CON 121.7 348.6	CLNC DEL 127.50
-------------------------	--	------------------------------------	-------------------------------	---------------------------



NE-2, 27 APR 2017 to 25 MAY 2017

NE-2, 27 APR 2017 to 25 MAY 2017

ELEV 285	D	TDZE 285
----------	----------	----------



Procedure NA for arrivals at CANAN on V487 southwest bound and V130 southeast bound.

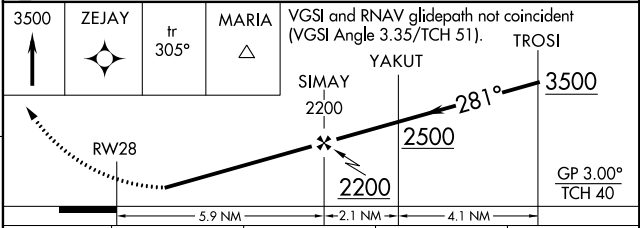
3500 ZEJAY tr 305° MARIA

VGSi and RNAV glidepath not coincident (VGSi Angle 3.35/TCH 51).

TROSI

SIMAY 2200 YAKUT 2500 281° 3500

GP 3.00° TCH 40



CATEGORY	A	B	C	D
LPV DA	783-1 ³ / ₄ 498 (500-1 ³ / ₄)			
LNAV/VNAV DA	825-1 ⁷ / ₈ 540 (600-1 ⁷ / ₈)			
LNAV MDA	760-1	475 (500-1)	760-1 ³ / ₈	475 (500-1 ³ / ₈)
CIRCLING	820-1	535 (600-1)	820-1 ¹ / ₂	840-2 555 (600-2)