


LOC/DME I-DEJ 109.5 Chan 32	APP CRS 011°	Rwy Idg TDZE Apt Elev	8500 284 285
--	------------------------	-----------------------------	---

ILS or LOC RWY 1

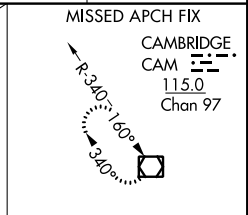
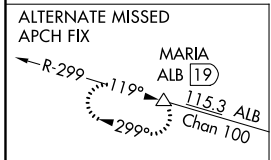
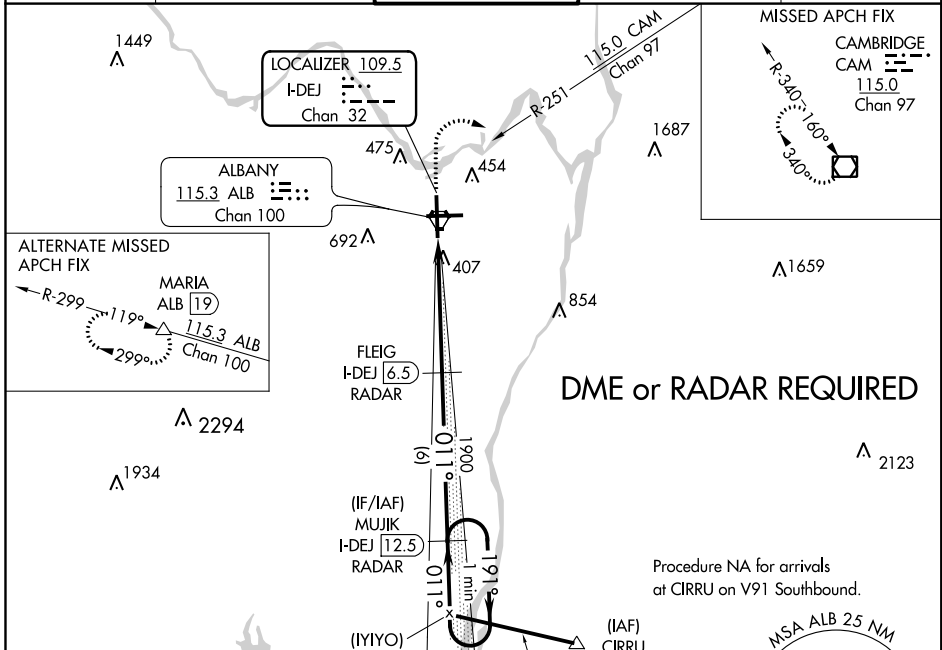
ALBANY INTL (ALB)

⚠ Circling NA west of Rwy 1-19. DME or RADAR required.

MALSRR 

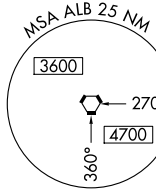
MISSED APPROACH: Climb to 800 then climbing right turn to 5000 and on CAM VOR/DME R-251 to CAM VOR/DME and hold.

D-ATIS 120.45	ALBANY APP CON 132.825 307.2	ALBANY TOWER 119.5 257.8	GND CON 121.7 348.6	CLNC DEL 127.50
-------------------------	--	------------------------------------	-------------------------------	---------------------------

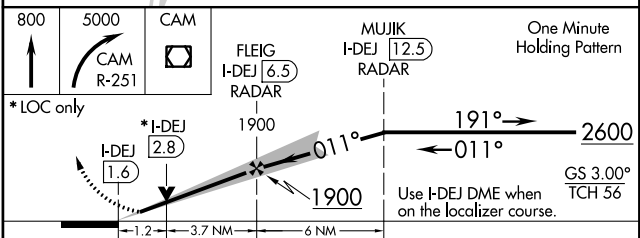
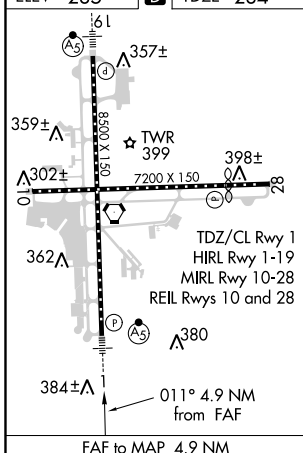


DME or RADAR REQUIRED

Procedure NA for arrivals at CIRRU on V91 Southbound.



ELEV 285	D	TDZE 284
----------	----------	----------



CATEGORY	A	B	C	D
S-ILS 1	484/18 200 (200-½)			
S-LOC 1	720/24	436 (500-½)	720/40	436 (500-¾)
CIRCLING	820-1	535 (600-1)	820-1½	840-2 555 (600-2)

FAF to MAP 4.9 NM	Knots	60	90	120	150	180
Min:Sec	4:54	3:16	2:27	1:58	1:38	

NE-2, 12 OCT 2017 to 09 NOV 2017

NE-2, 12 OCT 2017 to 09 NOV 2017