

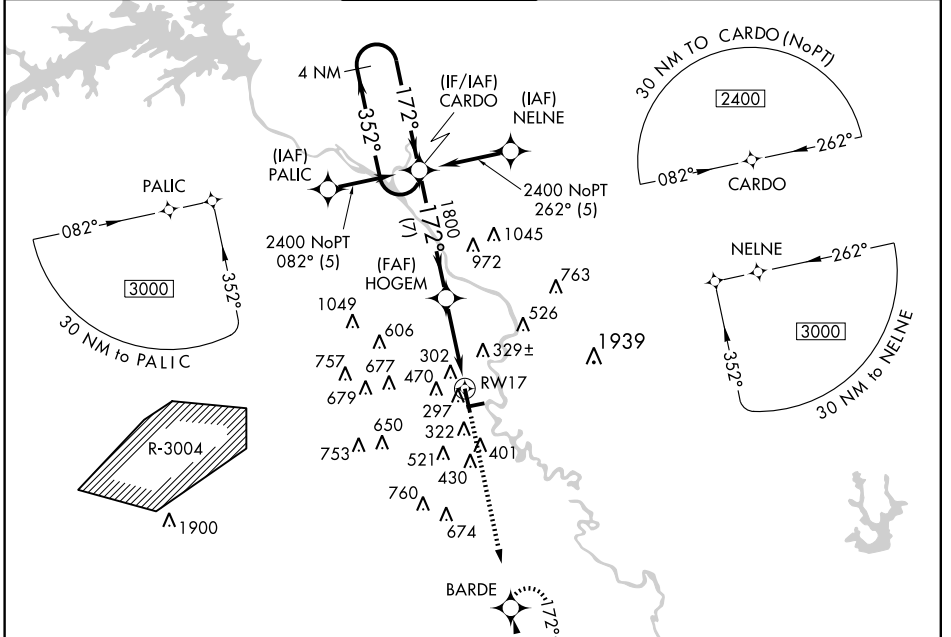
WAAS CH <b>77504</b> <b>W17A</b>	APP CRS <b>172°</b>	Rwy Idg TDZE Apt Elev	<b>8001</b> <b>145</b> <b>145</b>
--	------------------------	-----------------------------	---

# RNAV (GPS) RWY 17

AUGUSTA RGNL AT BUSH FIELD (AGS)

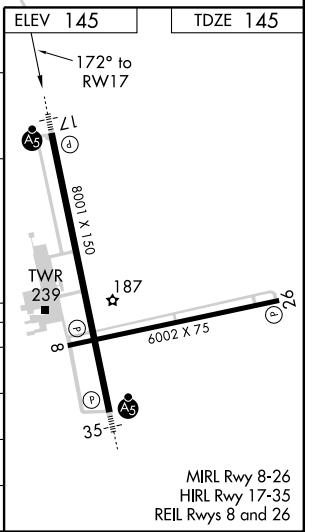
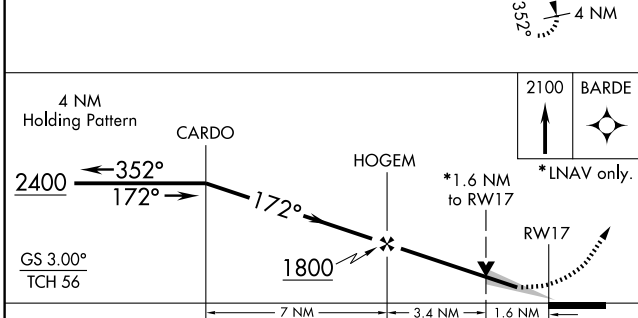
<b>ASR</b>	DME/DME RNP-0.3 NA. Baro-VNAV NA below -15°C (5°F). When VGS1 inoperative, circling Rwy 26 NA at night. Circling to Rwy 8 NA at night.	<b>MALSR</b>	MISSED APPROACH: Climb to 2100 direct BARDE and hold.
------------	--	--------------	---

ATIS <b>132.75</b>	AUGUSTA APP CON ★ <b>126.8 270.3</b>	AUGUSTA TOWER ★ <b>118.7 (CTAF) 239.3</b>	GND CON <b>121.9 348.6</b>	CLNC DEL <b>121.9</b>	UNICOM <b>122.95</b>
-----------------------	---	--	-------------------------------	--------------------------	-------------------------



SE-4, 31 MAY 2012 to 28 JUN 2012

SE-4, 31 MAY 2012 to 28 JUN 2012



CATEGORY	A	B	C	D
LPV DA		400/24	255 (300-½)	
LNAV/VNAV DA		700-1½	555 (600-1½)	
LNAV MDA	700/24	555 (600-½)	700/50 555 (600-1)	700/60 555 (600-¼)
CIRCLING		780-2	635 (700-2)	

MIRL Rwy 8-26  
HIRL Rwy 17-35  
REIL Rws 8 and 26