

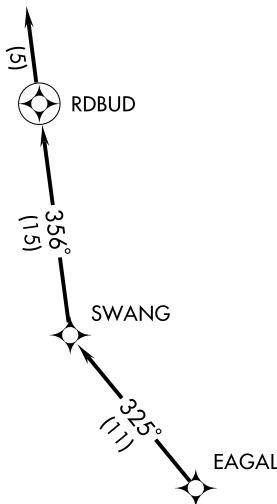
(RDBUD2.RDBUD) 09071

SL-27 (FAA)

AUGUSTA RGNL AT BUSH FIELD (AGS)
AUGUSTA, GEORGIA

RDBUD TWO DEPARTURE (RNAV)

AUGUSTA TOWER ★
118.7 (CTAF) 239.3
AUGUSTA DEP CON ★
126.8 270.3
AUGUSTA RGNL CLNC DEL
118.2



TAKEOFF MINIMUMS:

- Rwys 17, 35: STANDARD.
- Rwy 8: STANDARD with minimum climb of 392 feet per NM to 2600.
- Rwy 26: 300-1¾ or STANDARD with minimum climb of 308 feet per NM to 500.

- NOTE: RNAV 1.
- NOTE: RADAR Required.
- NOTE: DME/DME/IRU or GPS Required.
- NOTE: Do not exceed 230 KIAS until advised by ATC.
- NOTE: For Prop aircraft only during Masters golf tournament week.

NOTE: Chart not to scale.

DEPARTURE ROUTE DESCRIPTION

TAKEOFF RWY 8, 17, 26, 35: Climb heading assigned by ATC, expect vectors to EAGAL, then via depicted route to RDBUD, then fly heading 356°, expect radar vectors. Thence....

.... maintain altitude assigned by ATC. Expect clearance to filed altitude/flight level within 10 minutes after departure.

TAKEOFF OBSTACLE NOTES:

Rwy 8: Numerous trees beginning 560 feet from DER, 67 feet left of centerline, up to 80 feet AGL/209 feet MSL. Numerous trees beginning 821 feet from DER, 124 feet right of centerline, up to 80 feet AGL/209 feet MSL.

Rwy 17: Numerous trees beginning 746 feet from DER, 616 feet left of centerline, up to 72 feet AGL/203 feet MSL. Numerous trees beginning 1,700 feet from DER, 759 feet right of centerline, up to 82 feet AGL/216 feet MSL.

Rwy 26: Numerous trees beginning 993 feet from DER, 295 feet left of centerline, up to 85 feet AGL/219 feet MSL. Light pole and numerous trees beginning 1,016 feet from DER, 286 feet right of centerline, up to 71 feet AGL/205 feet MSL. Trees 4,983 feet from DER, 1,396 feet left of centerline, 100 feet AGL/329 feet MSL. Trees 1.4 NM from DER, 169 feet right of centerline, 112 feet AGL/361 feet MSL.

RDBUD TWO DEPARTURE (RNAV)

(RDBUD2.RDBUD) 09071

AUGUSTA, GEORGIA
AUGUSTA RGNL AT BUSH FIELD (AGS)

SE-4, 31 MAY 2012 to 28 JUN 2012

SE-4, 31 MAY 2012 to 28 JUN 2012