

RNAV (GPS) RWY 33

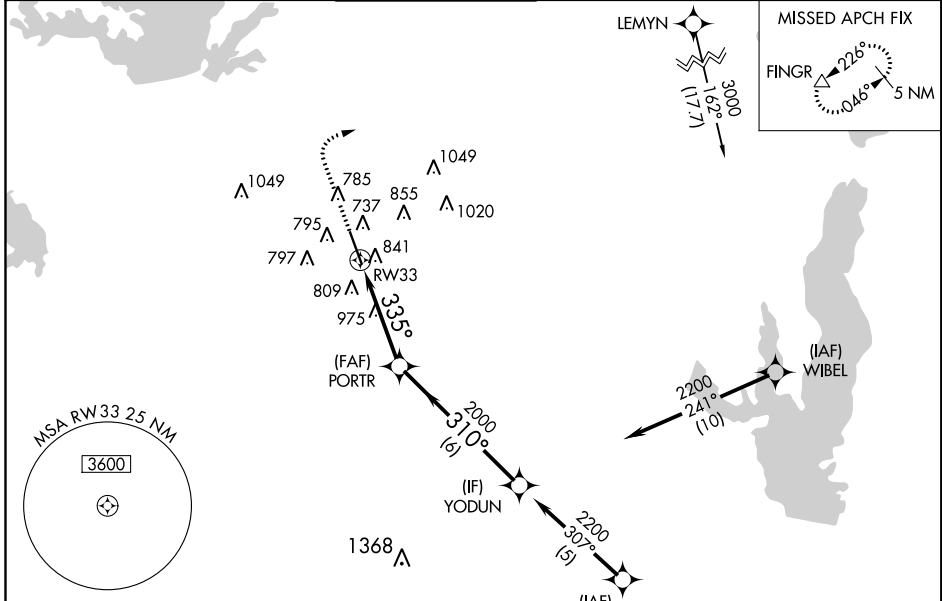
ADDISON (ADS)

APP CRS 335°	Rwy Idg 6431
	TDZE 645
	Apt Elev 645

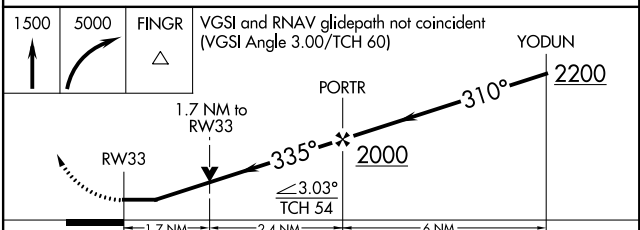
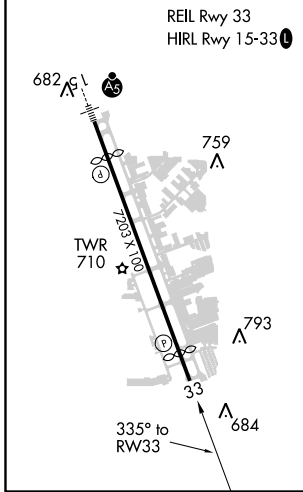
⚠ DME/DME RNP-0.3 NA. VDP NA with Dallas-Love Field altimeter setting. Helicopter visibility reduction below 3/4 SM NA. When local altimeter setting not received, use Dallas-Love Field altimeter setting and increase all MDA 40 feet, increase LNAV Cat C/D visibility 1/8 mile, Circling Cat C visibility 1/8 mile.

⚠ MISSED APPROACH: Climb to 1500 then climbing right turn to 5000 direct FINGR and hold.

ATIS 133.4	REGIONAL APP CON 124.3 282.275	ADDISON TOWER * 126.0 (CTAF) 0 239.0	GND CON 121.6	CLNC DEL 119.55	UNICOM 122.95
----------------------	--	--	-------------------------	---------------------------	-------------------------



ELEV 645	D TDZE 645
----------	-------------------



CATEGORY	A	B	C	D
LNAV MDA	1240-1 595 (600-1)		1240-1 3/4 595 (600-1 3/4)	
C CIRCLING	1240-1 595 (600-1)		1280-1 3/4 635 (700-1 3/4)	1400-2 1/2 755 (800-2 1/2)

ADDISON (ADS) RNAV (GPS) RWY 33

SC-2, 14 SEP 2017 to 12 OCT 2017

SC-2, 14 SEP 2017 to 12 OCT 2017