

WYLLIE FIVE DEPARTURE
(WYLLIE5.TTT) 12152

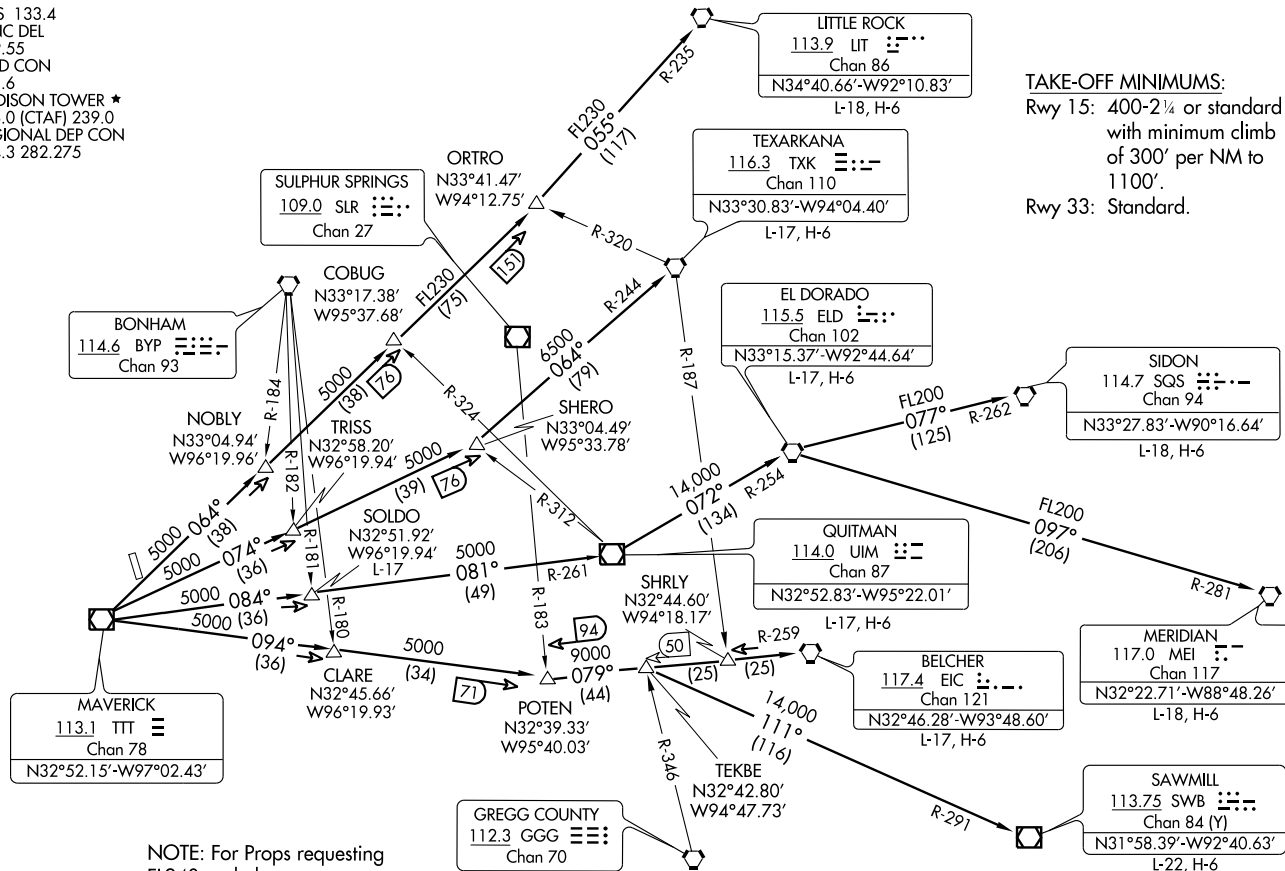
(WYLLIE5.TTT) 12152
WYLLIE FIVE DEPARTURE

SL-768 (FAA)

DALLAS/ADDISON (ADS)
DALLAS, TEXAS

ATIS 133.4
CLNC DEL
119.55
GND CON
121.6
ADDITION TOWER ★
126.0 (CTAF) 239.0
REGIONAL DEP CON
124.3 282.275

TAKE-OFF MINIMUMS:
Rwy 15: 400-2¼ or standard
with minimum climb
of 300' per NM to
1100'.
Rwy 33: Standard.



NOTE: For Props requesting
FL240 and above.

(NARRATIVE ON FOLLOWING PAGE)

NOTE: Chart not to scale

DALLAS, TEXAS
DALLAS/ADDISON (ADS)



DEPARTURE ROUTE DESCRIPTION

When entering controlled airspace, fly assigned heading and altitude to appropriate route.

BELCHER TRANSITION (WYLIE5.EIC): (For aircraft inbound to Jackson, Monroe, and Shreveport terminal area.) From over TTT VOR/DME via TTT R-094 to POTEN, then via EIC R-259 to EIC VORTAC.

EL DORADO TRANSITION (WYLIE5.ELD): (For aircraft inbound to the Memphis Terminal area. Aircraft should file and/or expect appropriate STAR.) From over TTT VOR/DME via TTT R-084 to SOLD0, then via UIM R-261 to UIM VOR/DME, then via UIM R-072 and ELD R-254 to ELD VORTAC.

LITTLE ROCK TRANSITION (WYLIE5.LIT): From over TTT VOR/DME via TTT R-064 to ORTRO, then via LIT R-235 to LIT VORTAC.

MERIDIAN TRANSITION (WYLIE5.MEI): (For aircraft inbound to the Atlanta Terminal area.) From over TTT VOR/DME via TTT R-084 to SOLD0, then via UIM R-261 to UIM VOR/DME, then via UIM R-072 and ELD R-254 to ELD VORTAC, then via ELD R-097 and MEI R-281 to MEI VORTAC.

QUITMAN TRANSITION (WYLIE5.UIM): (For aircraft inbound to Shreveport Terminal area.) From over TTT VOR/DME via TTT R-084 to SOLD0, then via UIM R-261 to UIM VOR/DME.

SAWMILL TRANSITION (WYLIE5.SWB): From over TTT VOR/DME via TTT R-094 to POTEN, then via EIC R-259 to TEKBE, then via SWB R-291 to SWB VOR/DME.

SIDON TRANSITION (WYLIE5.SQS): From over TTT VOR/DME via TTT R-084 to SOLD0, then via UIM R-261 to UIM VOR/DME, then via UIM R-072 and ELD R-254 to ELD VORTAC, then via ELD R-077 and SQS R-262 to SQS VORTAC.

SOLDO TRANSITION (WYLIE5.SOLDO): (ATC assigned.) From over TTT VOR/DME via TTT R-084 to SOLD0.

TEXARKANA TRANSITION (WYLIE5.TXK): From over TTT VOR/DME via TTT R-074 to SHERO, then via TXK R-244 to TXK VORTAC.

TAKE-OFF OBSTACLES:

Rwy 15, Multiple buildings beginning 1085' from departure end of runway, 21' left of centerline, up to 321' AGL/945' MSL. Building with antenna 1.9 NM from departure end of runway, 968' right of centerline, 345' AGL/975' MSL. Pole 666' from departure end of runway, 640' left of centerline, 60' AGL/681' MSL. Multiple trees beginning 721' from departure end of runway, 115' left of centerline, up to 40' AGL/675' MSL. Road, railroad beginning 268' from departure end of runway, 495' right of centerline, up to 21' AGL/655' MSL.

Rwy 33, Multiple poles and trees beginning 640' from departure end of runway, 21' left of centerline, up to 60' AGL/709' MSL. Multiple buildings beginning 1225' from departure end of runway, 147' left of centerline, up to 37' AGL/607' MSL. Multiple buildings beginning 45' from departure end of runway, 458' right of centerline, up to 57' AGL/696' MSL. Multiple poles beginning 922' from departure end of runway, 186' right of centerline, up to 60' AGL/720' MSL.

SC-2, 31 MAY 2012 to 28 JUN 2012

SC-2, 31 MAY 2012 to 28 JUN 2012