

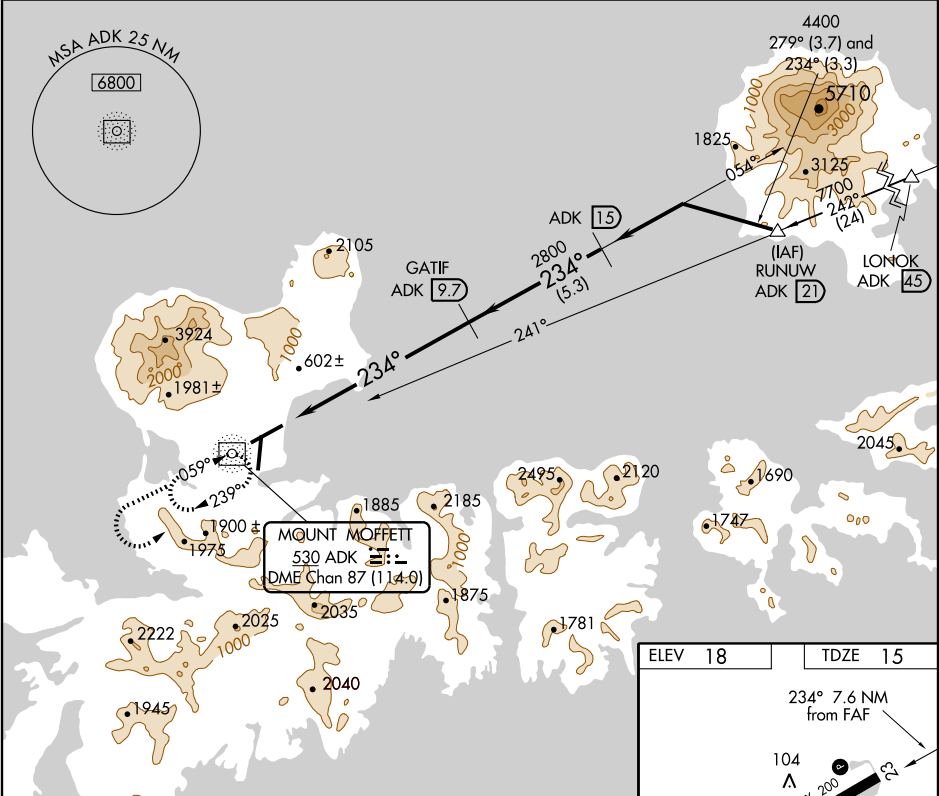
NDB/DME RWY 23

ADAK (ADK)(PADK)

NDB/DME ADK 530	APP CRS 234°	Rwy ldg 7790 TDZE 15 Apt Elev 18
Chan 87 (114.0)		

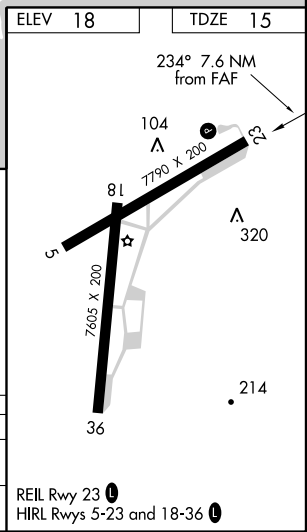
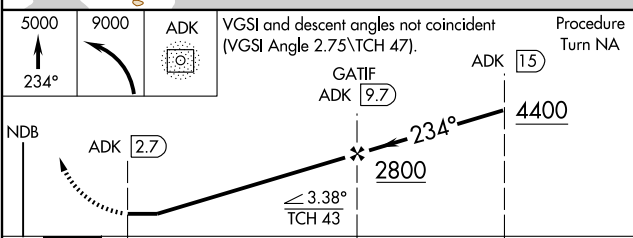
⚠ Circling not authorized at night.
⚠ MISSED APPROACH: Climb to 5000 via direct ADK NDB/DME and ADK NDB/DME 234° bearing, then climbing left turn to 9000 direct ADK NDB/DME and hold.

AWOS-3 134.5	ANCHORAGE CENTER 126.4 254.3	CTAF 122.9
------------------------	--	----------------------



AK, 31 MAY 2012 to 26 JUL 2012

AK, 31 MAY 2012 to 26 JUL 2012



CATEGORY	A	B	C	D
S-23	1600/60 1585 (1600-1¼)	1600-1½ 1585 (1600-1½)	1600-3	1585 (1600-3)
CIRCLING	1600-1¼ 1582 (1600-1¼)	1600-1½ 1582 (1600-1½)	1600-3	1582 (1600-3)