

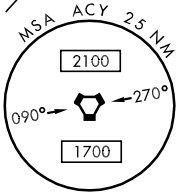
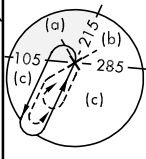
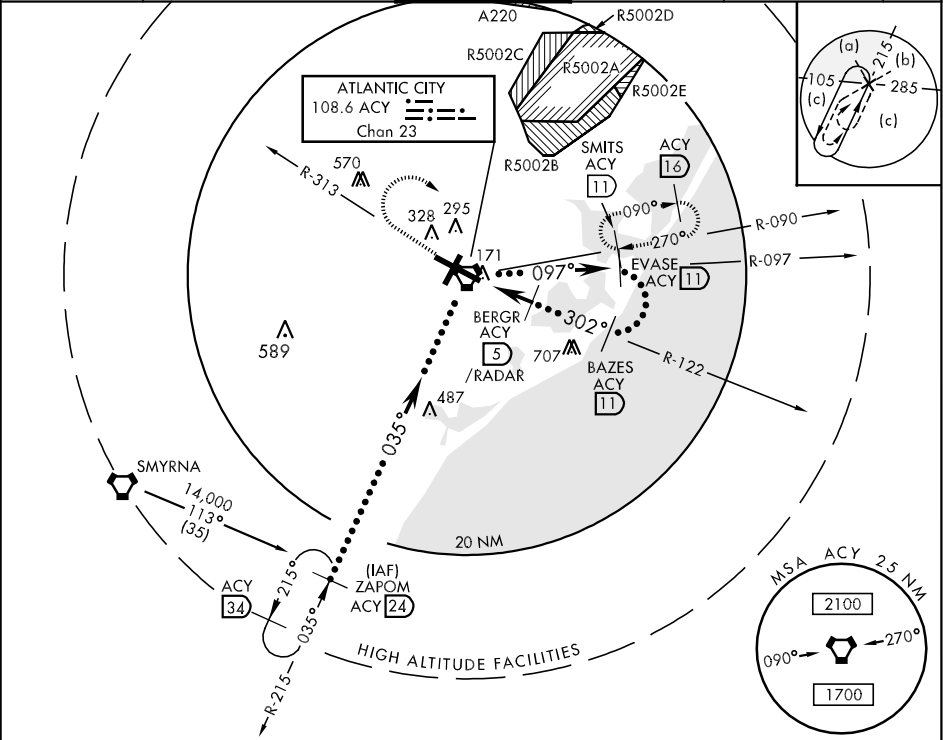
VORTAC ACY 108.6 Chan 23	APCH CRS 302°	Rwy Idg 10,000 TDZE 63 Arprt Elev 75
--	-------------------------	---

JAL-669 [USAF]

ATLANTIC CITY INTL (KACY)

MISSED APPROACH: Climbing right turn to 2000 via heading 120° and ACY R-090 to SMITS INT/ACY 11 DME and hold.

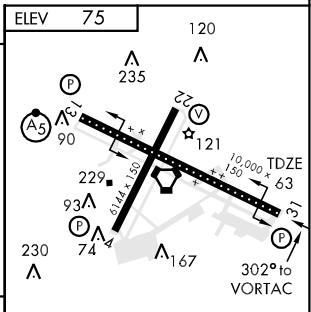
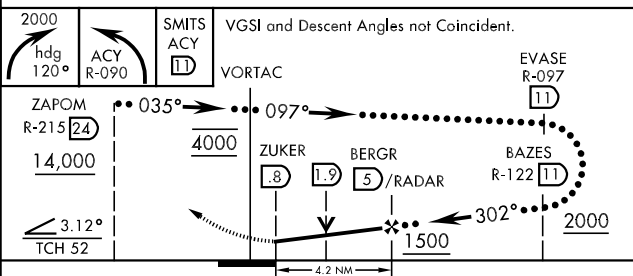
ATIS 108.6 316.15	ATLANTIC CITY APP CON 130°- 309° 124.6 327.125 310°- 129° 134.25 385.5	ATLANTIC CITY TOWER 120.3 239.0	GND CON 121.9 284.6	CLNC DEL 127.85 353.775	ASR
-----------------------------	--	---	-------------------------------	-----------------------------------	-----



NE-2, 31 MAY 2012 to 28 JUN 2012

NE-2, 31 MAY 2012 to 28 JUN 2012

EMERG SAFE ALT 100 NM 4200



CATEGORY	C	D	E
S-31	480-1¼ 417	(500-1¼)	480-1½ 417 (500-1½)
CIRCLING	540-1½ 465 (500-1½)	640-2 565 (600-2)	760-2½ 685 (700-2½)

REIL Rwy 31
HIRL Rwy 4-22 and 13-31
TDZL/CL Rwy 13