

LOC/DME I-PVO <b>109.1</b> Chan 28	APCH CRS <b>128°</b>	Rwy Idg <b>10,000</b> TDZE Arprt Elev <b>75</b>
--	-------------------------	---

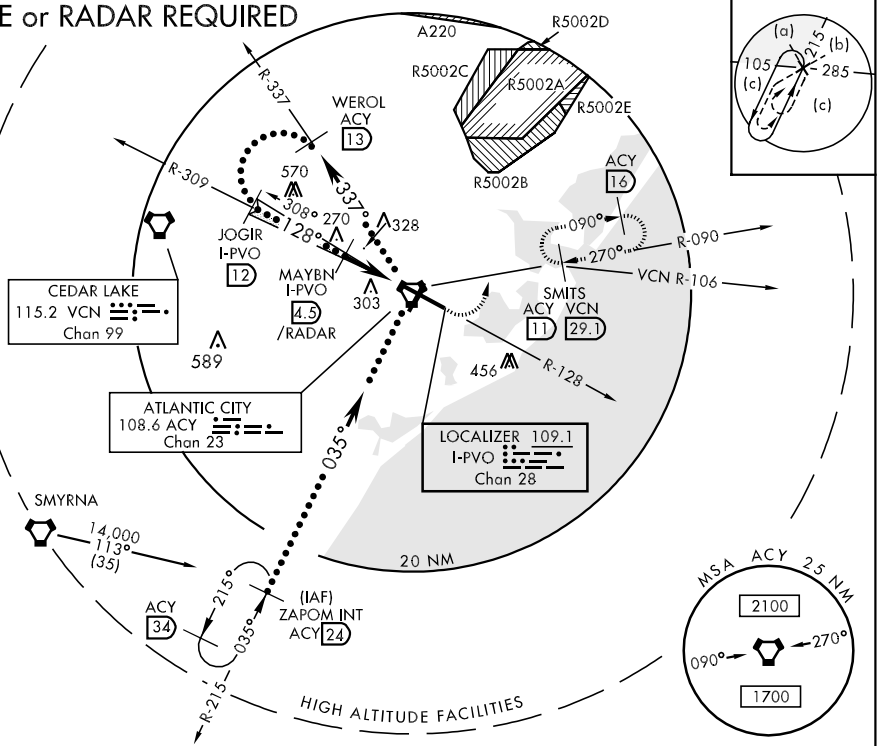
JAL-669 [USAF]

ATLANTIC CITY INTL (KACY)

**MISSED APPROACH:** Climb to 600 then climbing left turn to 2000 via ACY R-090 to SMITS INT/ACY 11 DME and hold; or when directed by ATC, climb to 600 then climbing left turn to 2000 via heading 076° and VCN R-106 to SMITS INT/VCN 29.1 DME and hold E, RT, hdg 286° inbound.

ATIS <b>108.6 316.15</b>	ATLANTIC CITY APP CON 130°-309° <b>124.6 327.125</b> 310°-129° <b>134.25 385.5</b>	ATLANTIC CITY TOWER <b>120.3 239.0</b>	GND CON <b>121.9 284.6</b>	CLNC DEL <b>127.85 353.775</b>	ASR
-----------------------------	--	---	-------------------------------	-----------------------------------	-----

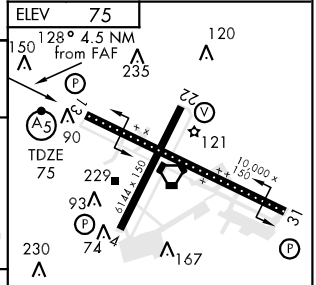
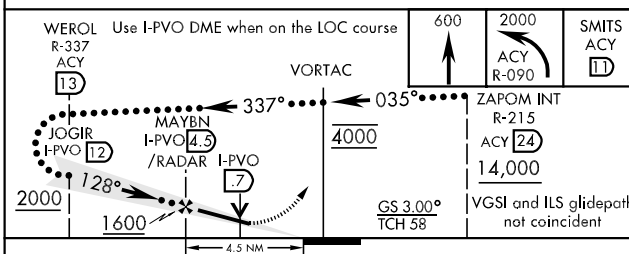
## DME or RADAR REQUIRED



NE-2, 31 MAY 2012 to 28 JUN 2012

NE-2, 31 MAY 2012 to 28 JUN 2012

EMERG SAFE ALT 100 NM 4200



CATEGORY	C	D	E
S-ILS 13 *	275/18	200 (200-½)	275/24 200 (200-½)
S-LOC 13 **	400/24 325 (400-½)	400/40	325 (400-¾)
CIRCLING	540-1½ 465 (500-1½)	640-2 565 (600-2)	760-2½ 685 (700-2½)

REIL Rwy 31	120	140	160	180	200
HIRL Rwy 4-22 and 13-31	2:15	1:56	1:41	1:30	1:21
TDZL/CL Rwy 13	FAF to MAP 4.5 NM				