

RNAV (GPS) RWY 31

ABERDEEN RGNL (ABR)

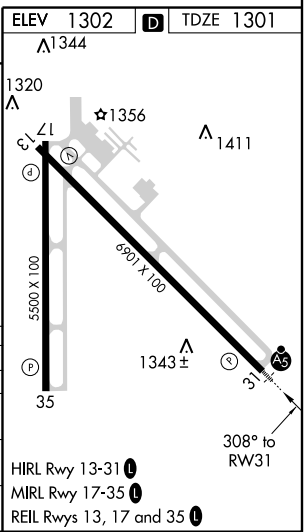
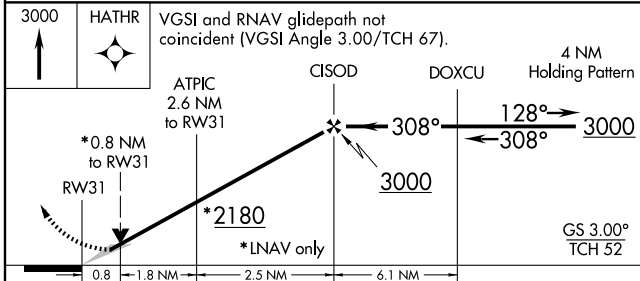
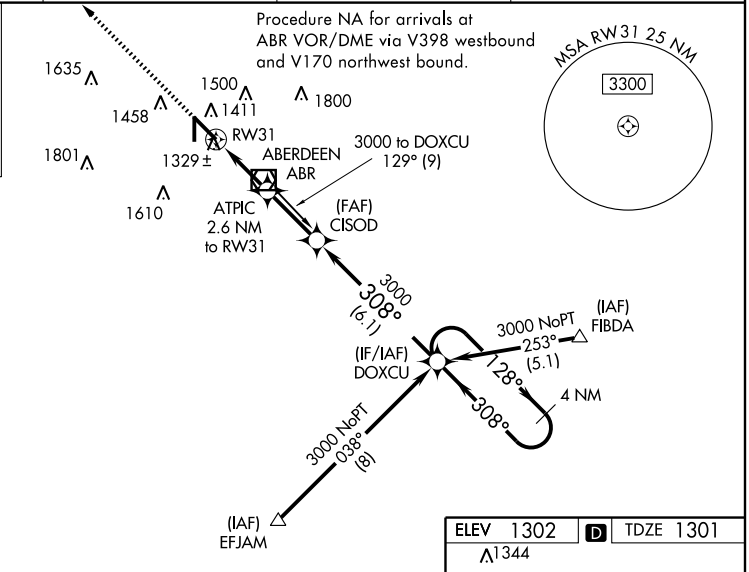
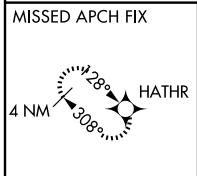
WAAS CH 42914 W31A	APP CRS 308°	Rwy Idg 6901 TDZE 1301 Apt Elev 1302
--	------------------------	---

Inoperative table does not apply to LNAV Cat D visibility. For inoperative MALSR, increase LNAV/VNAV Cat D visibility to 1. Baro-VNAV NA when using Watertown altimeter setting. For uncompensated Baro-VNAV systems, LNAV/VNAV NA below -17°C (2°F) or above 46°C (114°F). DME/DME RNP-0.3 NA. VDP NA when using **▽** Watertown altimeter setting. For inoperative MALSR when using Watertown altimeter **▲** setting increase LPV all Cats visibility to 1½. When local altimeter setting not received, use Watertown altimeter setting and increase all DA 207 feet, all MDA 220 feet, LPV all Cats visibility ¼ mile, LNAV/VNAV Cats A, B and C visibility ¾ mile, Cat D visibility ½ mile, LNAV Cat C visibility ½ mile, Cat D visibility ¼ mile and Circling Cats C and D visibility ½ mile.

MALSR

MISSED APPROACH: Climb to 3000 direct HATHR and hold.

ASOS 125.875	MINNEAPOLIS CENTER 120.6 371.9	CTAF 122.7	UNICOM 122.95
------------------------	--	----------------------	-------------------------



CATEGORY	A	B	C	D
LPV DA	1501-½ 200 (200-½)			
LNAV/VNAV DA	1599-½ 298 (300-½)		1599-¾ 298 (300-¾)	
LNAV MDA	1620-½ 319 (400-½)		1620-1 319 (400-1)	
CIRCLING	1760-1	458 (500-1)	1760-1½ 458 (500-1½)	1860-2 558 (600-2)

NC-1, 31 MAY 2012 to 28 JUN 2012

NC-1, 31 MAY 2012 to 28 JUN 2012