

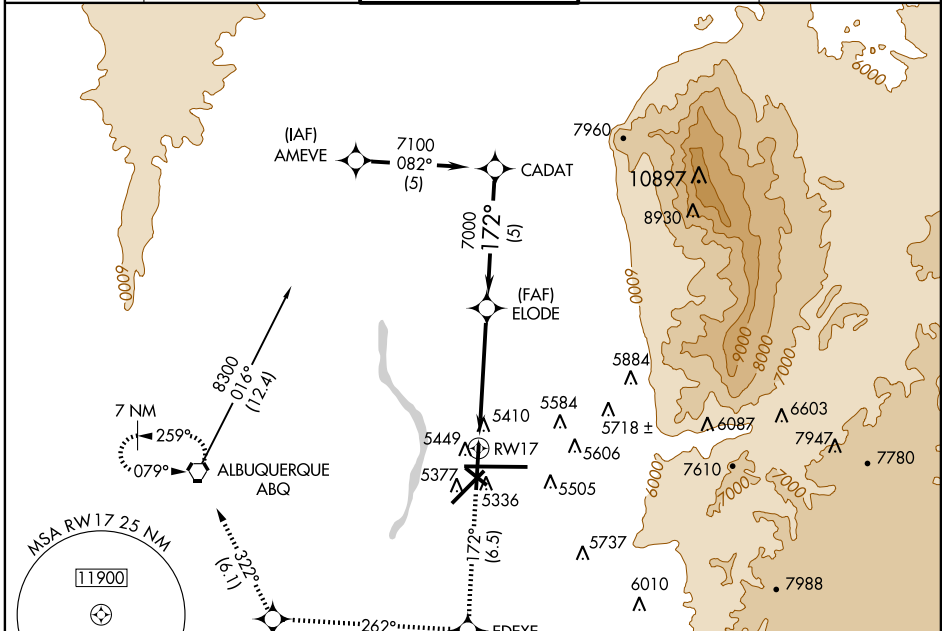
# RNAV (GPS) RWY 17

ALBUQUERQUE INTL SUNPORT (ABQ)

APP CRS <b>172°</b>	Rwy Idg TDZE Apt Elev	<b>9110</b> <b>5321</b> <b>5355</b>
------------------------	-----------------------------	---

**NA** Baro-VNAV NA below -25° C (-13° F)  
 GPS or RNP-0.3 required. DME/DME RNP-0.3 NA.  
**ASR** MISSED APPROACH: Climb to 9000 via 172° course to EDEXE then via 262° course to MATNE then via 322° course to ABQ VORTAC and hold.

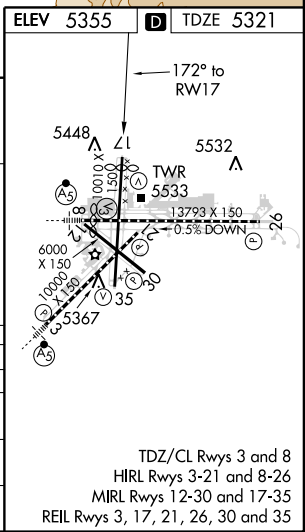
ATIS <b>118.0 257.7</b>	ALBUQUERQUE APP CON <b>123.9 354.1</b>	ALBUQUERQUE TOWER <b>120.3 351.9</b>	GND CON <b>121.9 348.6</b>	CLNC DEL <b>119.2 259.3</b>
----------------------------	---	---	-------------------------------	--------------------------------



SW-1, 31 MAY 2012 to 28 JUN 2012

SW-1, 31 MAY 2012 to 28 JUN 2012

Procedure Turn NA	CADAT	9000	EDEXE	MATNE	ABQ
		172° crs	262° crs	322° crs	
GS 3.00° TCH 53	7100	7000	*LNAV only		
	5 NM	3.7 NM	1.3 NM	*1.3 NM to RWY17	
CATEGORY	A	B	C	D	
GLS DA	NA				
LNAV/VNAV DA	5700-1¼ 379 (400-1¼)				
LNAV MDA	5780-1	459 (500-1)	5780-1¼ 459 (500-1¼)	5780-1½ 459 (500-1½)	
CIRCLING	5840-1¼	485 (500-1¼)	5900-1½ 545 (600-1½)	5940-2 585 (600-2)	



TDZ/CL Rwy 3 and 8  
 HIRL Rwy 3-21 and 8-26  
 MIRL Rwy 12-30 and 17-35  
 REL Rwy 3, 17, 21, 26, 30 and 35