

RNAV (GPS) RWY 25

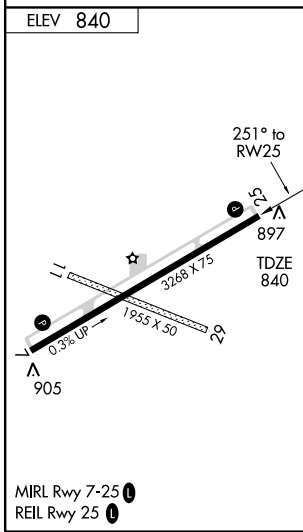
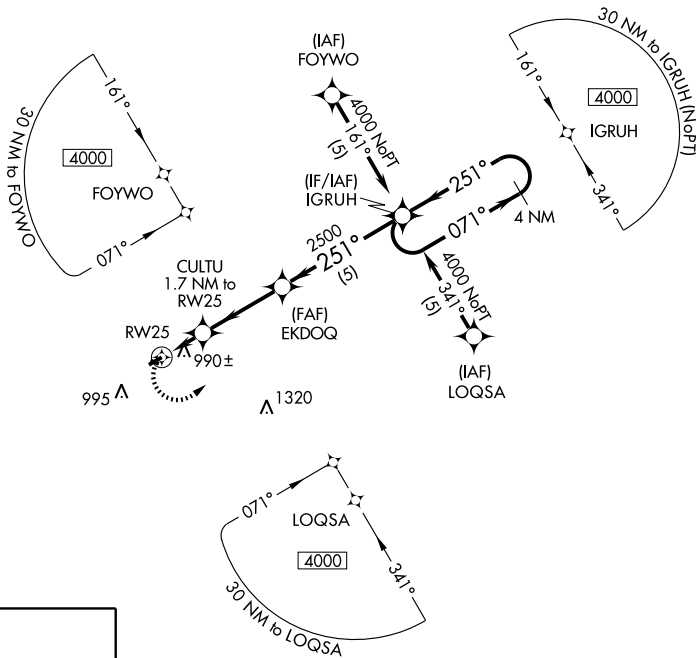
AKRON (9G3)

APP CRS 251°	Rwy Idg 3268 TDZE 840 Apt Elev 840
------------------------	---

▽ DME/DME RNP-0.3 NA.
△ NA
Visibility reduction by helicopters NA.
Use Buffalo altimeter setting.

MISSED APPROACH: Climbing left turn to 4000
direct IGRUH and hold, continue climb-in-hold 4000.

BUFFALO ASOS 135.35	BUFFALO APP CON 126.15 263.125	UNICOM 122.725 (CTAF)
-------------------------------	--	---------------------------------



ELEV 840	△ 2449	4000 IGRUH	4 NM Holding Pattern
△ 905	CULTU 1.7 NM to RW25	EKDOQ	IGRUH
△ 995	RW25	△ 1420	△ 2500
△ 1320	3.04° TCH 40	251°	071° → 4000
	1.7	3.3 NM	5 NM
	1420	2500	4000
	VGS1 and descent angles not coincident.		
	CATEGORY	A	B
	LNNAV MDA	1300-1	460 (500-1)
	CIRCLING	1340-1	500 (500-1)
		C	D
			NA

NE-2, 31 MAY 2012 to 28 JUN 2012

NE-2, 31 MAY 2012 to 28 JUN 2012

RNAV (GPS) RWY 7

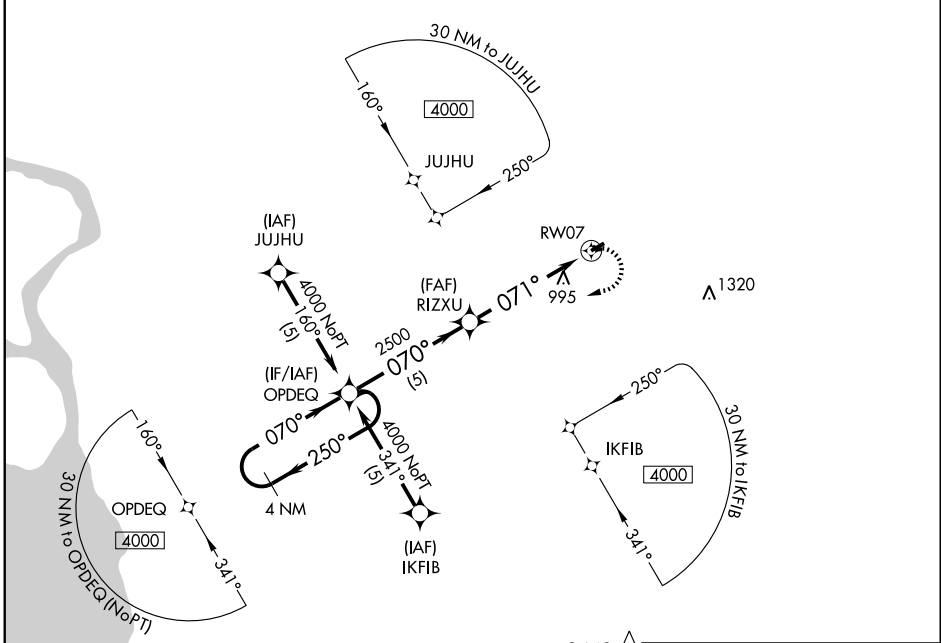
AKRON (9G3)

APP CRS 071°	Rwy Idg 3268
	TDZE 839
	Apt Elev 840

⚠ NA DME/DME RNP-0.3 NA. Visibility reduction by helicopters NA. Use Buffalo altimeter setting.

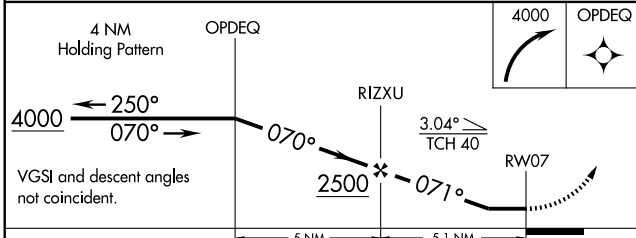
MISSED APPROACH: Climbing right turn to 4000 direct OPDEQ and hold, continue climb-in-hold to 4000.

BUFFALO ASOS 135.35	BUFFALO APP CON 126.15 263.125	UNICOM 122.725 (CTAF) 0
-------------------------------	--	-----------------------------------

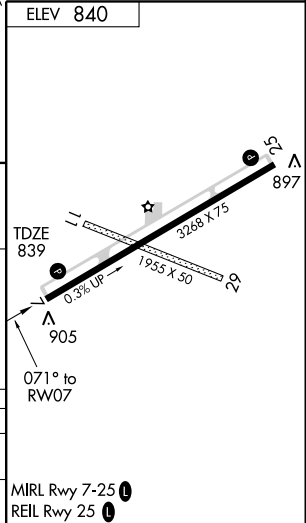


NE-2, 31 MAY 2012 to 28 JUN 2012

NE-2, 31 MAY 2012 to 28 JUN 2012



CATEGORY	A	B	C	D
LNAV MDA	1300-1	461 (500-1)	NA	
CIRCLING	1340-1	500 (500-1)	NA	



MIRL Rwy 7-25 0
REIL Rwy 25 0