

WAAS CH 42724 W24A	APP CRS 239°	Rwy ldg THRE 671 Apt Elev 670
--	------------------------	---

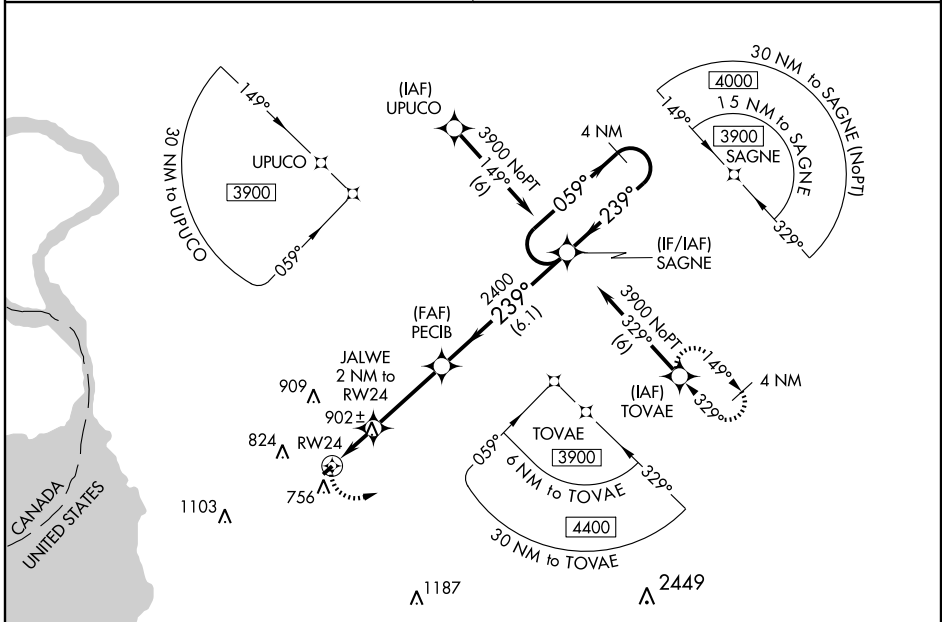
RNAV (GPS) RWY 24

BUFFALO AIRFIELD (9G4)

NA Circling to Rwy 6 NA at night. DME/DME RNP-0.3 NA. Visibility reduction by helicopters NA. Use Buffalo Niagara Intl altimeter setting, when not received, use Niagara Falls Intl altimeter setting and increase all MDA 60 feet. VDP NA with Niagara Falls Intl altimeter setting.

MISSED APPROACH: Climbing left turn to 3900 direct TOVAE and hold.

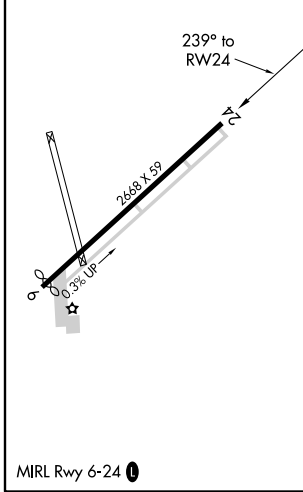
BUFFALO APP CON 126.15 263.125	UNICOM 122.975 (CTAF)
--	---------------------------------



NE-2, 31 MAY 2012 to 28 JUN 2012

NE-2, 31 MAY 2012 to 28 JUN 2012

ELEV 670	THRE 671
----------	----------



	3900	TOVAE						
			JALWE 2 NM to RW24	PECIB	SAGNE	4 NM Holding Pattern		
			1.4 NM to RW24	≤ 3.00° TCH 40	2400	059° →	← 239°	3900
			1.4	0.6	3.3 NM	6.1 NM		
CATEGORY	A		B		C	D		
LP MDA	1160-1		489 (500-1)		NA			
LNAV MDA	1160-1		489 (500-1)		NA			
CIRCLING	1240-1		570 (600-1)		NA			

WAAS CH 99724 W06A	APP CRS 059°	Rwy Idg THRE 664 Apt Elev 670	2598
--	------------------------	---	-------------

RNAV (GPS) RWY 6

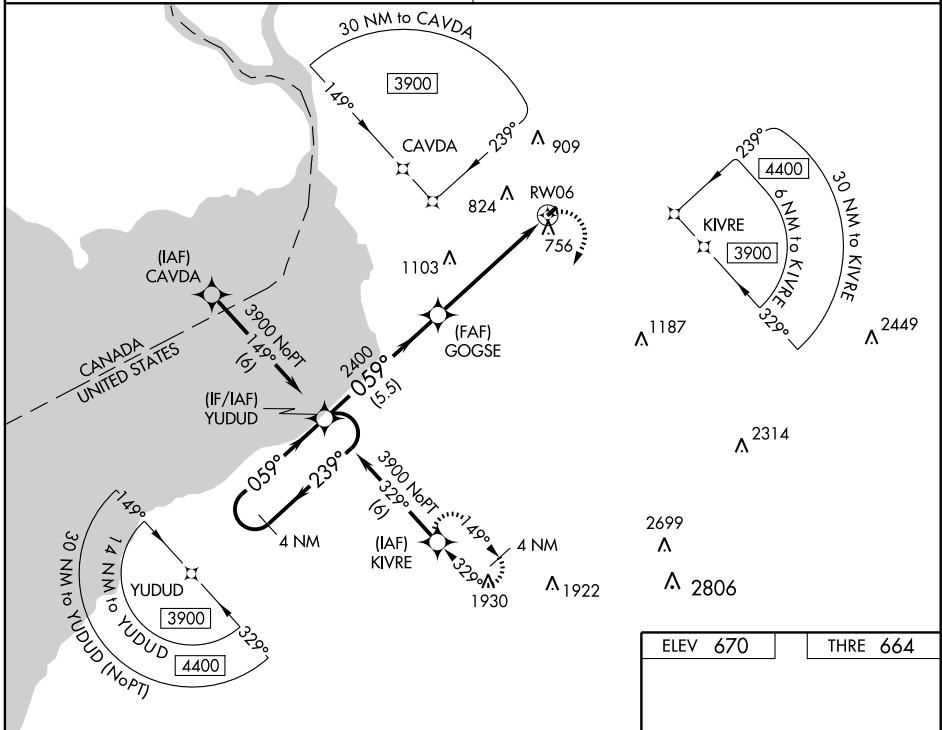
BUFFALO AIRFIELD (9G4)

V DME/DME RNP-0.3 NA. Procedure NA at night. Visibility reduction by helicopters NA. VDP NA with Niagara Intl altimeter setting. Use Buffalo Niagara Intl altimeter setting, when not received, use Niagara Falls Intl altimeter setting and increase all MDA 60 feet.

A NA

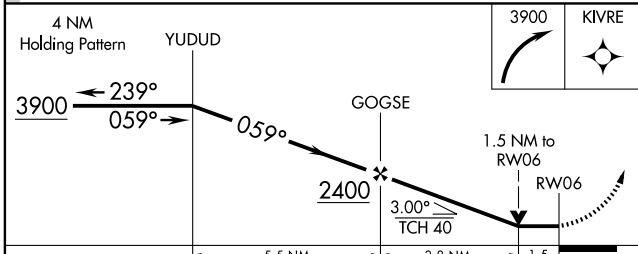
MISSED APPROACH: Climbing right turn to 3900 direct KIVRE and hold, continue climb in hold to 3900.

BUFFALO APP CON 126.15 263.125	UNICOM 122.975 (CTAF)
--	---------------------------------



NE-2, 31 MAY 2012 to 28 JUN 2012

NE-2, 31 MAY 2012 to 28 JUN 2012



CATEGORY	A	B	C	D
LP MDA	1180-1	516 (600-1)		NA
LNAV MDA	1180-1	516 (600-1)		NA
CIRCLING	1240-1	570 (600-1)		NA

