

APP CRS	Rwy Idg	<b>3603</b>
<b>231°</b>	TDZE	<b>231</b>
	Apt Elev	<b>231</b>

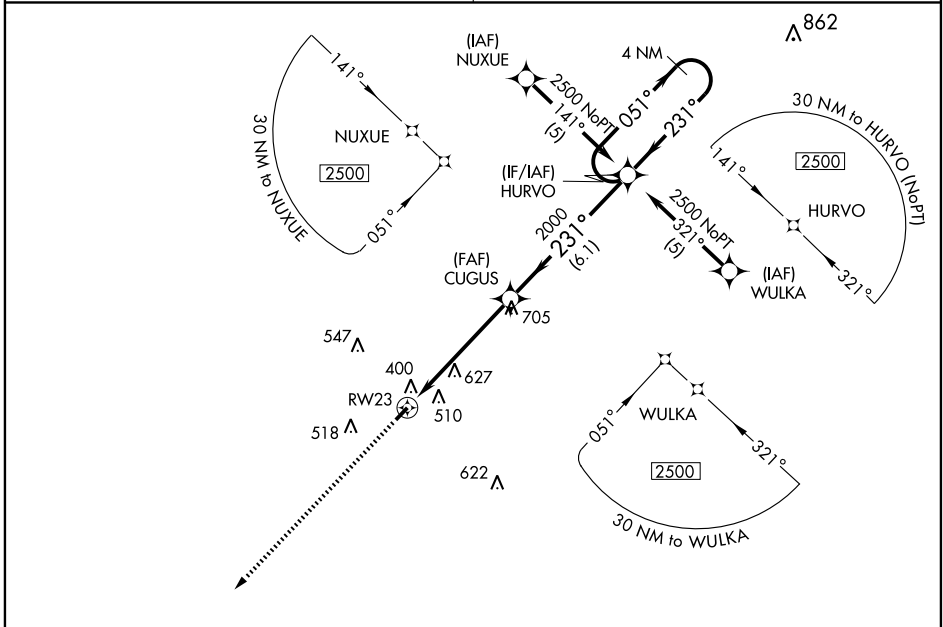
# RNAV (GPS) RWY 23

BAMBERG COUNTY (99N)

**⚠** DME/DME RNP-0.3 NA. Circling NA at night.  
**⚠** NA Visibility reduction by helicopters NA.  
 Use Orangeburg Muni altimeter setting, when not received, use North AF AUX altimeter setting and increase all MDA 20 feet.

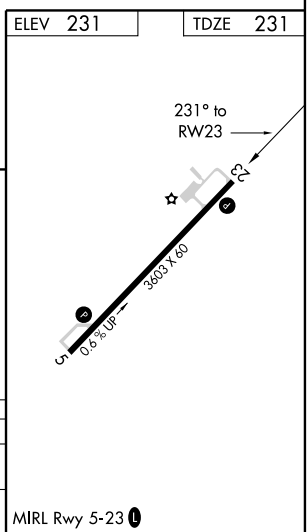
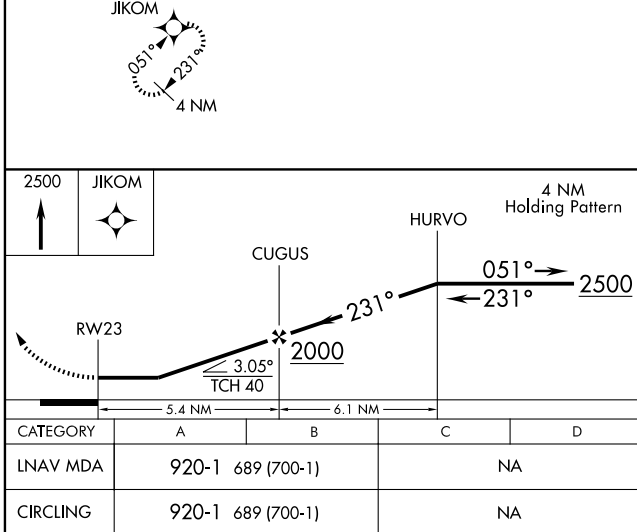
MISSED APPROACH: Climb to 2500 direct JIKOM and hold.

COLUMBIA APP CON <b>124.15 338.2</b>	UNICOM <b>122.8 (CTAF) 0</b>
---	---------------------------------



SE-2, 31 MAY 2012 to 28 JUN 2012

SE-2, 31 MAY 2012 to 28 JUN 2012



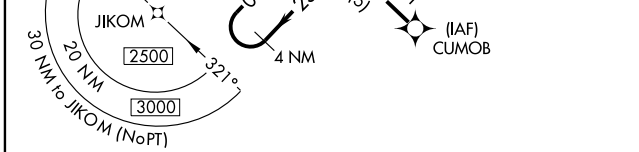
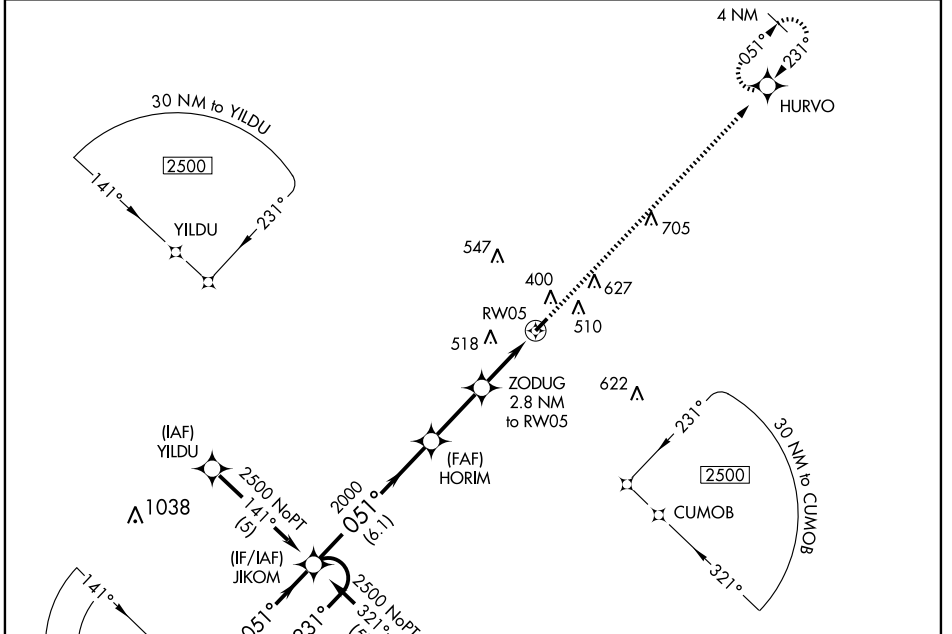
APP CRS	Rwy Idg	<b>3603</b>
<b>051°</b>	TDZE	<b>226</b>
	Apt Elev	<b>231</b>

# RNAV (GPS) RWY 5

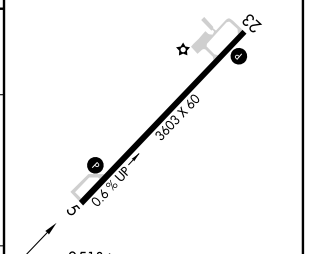
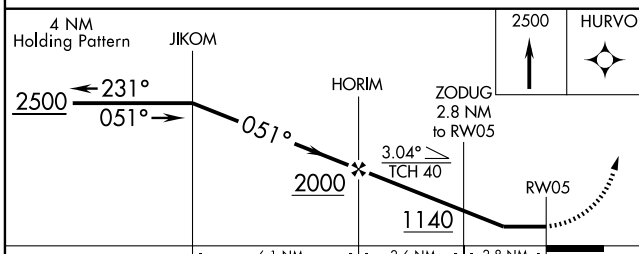
BAMBERG COUNTY (99N)

<p><b>▽</b> DME/DME RNP-0.3 NA. Circling NA at night.                  Visibility reduction by helicopters NA.  <b>△</b> NA Use Orangeburg Muni altimeter setting, when not received, use North AF AUX altimeter setting and increase all MDA 20 feet.</p>	<p>MISSED APPROACH: Climb to 2500 direct HURVO and hold.</p>
--	--

<p>COLUMBIA APP CON  <b>124.15 338.2</b></p>	<p>UNICOM  <b>122.8 (CTAF) 0</b></p>
--	--



ELEV 231	TDZE 226
----------	----------



CATEGORY	A	B	C	D
LNNAV MDA	740-1	514 (600-1)		NA
CIRCLING	920-1	689 (700-1)		NA

MIRL Rwy 5-23 0

SE-2, 31 MAY 2012 to 28 JUN 2012

SE-2, 31 MAY 2012 to 28 JUN 2012