

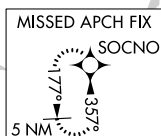
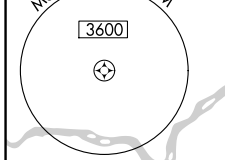
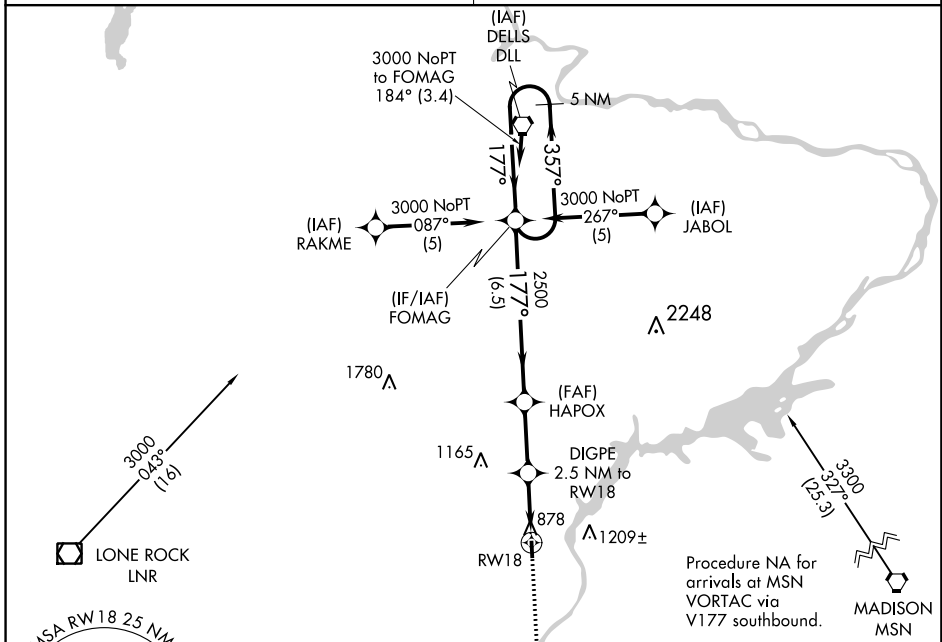
APP CRS	Rwy Idg	<b>2936</b>
<b>177°</b>	TDZE	<b>832</b>
	Apt Elev	<b>832</b>

# RNAV (GPS) RWY 18

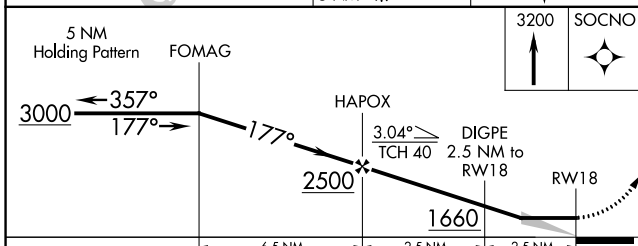
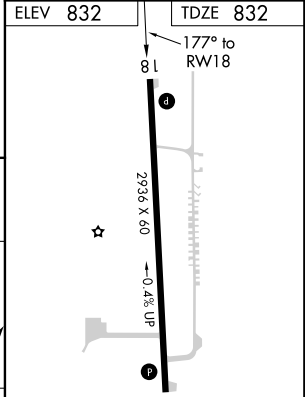
SAUK-PRAIRIE (91C)

**NA** Use Dane County Rgnl-Truax Field altimeter setting; if not received use Baraboo altimeter setting. DME/DME RNP-0.3 NA. MISSED APPROACH: Climb to 3200 direct SOCNO and hold.

<b>MADISON APP CON*</b> <b>135.45 343.7</b>	<b>CTAF</b> <b>122.9 0</b>
--	-------------------------------



ELEV 832	TDZE 832
----------	----------



CATEGORY	A	B	C	D
LNAV MDA	1400-1	568 (600-1)		NA
CIRCLING	1400-1	568 (600-1)		NA

MIRL Rwy 18-36 0  
REIL Rwy 18 and 36 0

EC-3, 22 JUN 2017 to 20 JUL 2017

EC-3, 22 JUN 2017 to 20 JUL 2017

APP CRS	Rwy Idg	<b>2936</b>
<b>357°</b>	TDZE	<b>832</b>
	Apt Elev	<b>832</b>

# RNAV (GPS) RWY 36

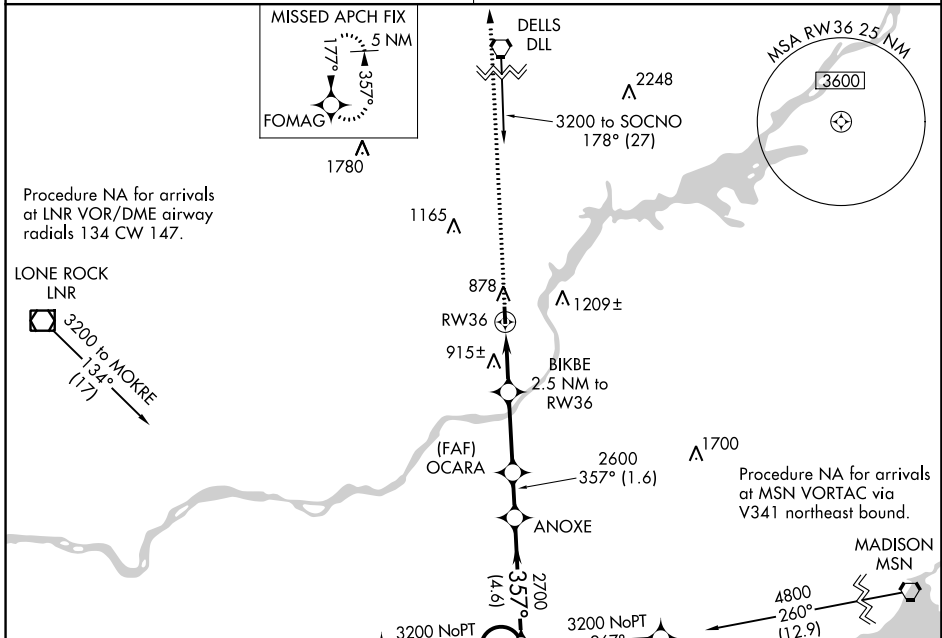
SAUK-PRAIRIE (91C)

**▲** Use Dane County Rgnl-Truax Field altimeter setting; if not received, use Baraboo altimeter setting. DME/DME RNP-0.3 NA.  
**▲** NA Visibility reduction by helicopters NA.

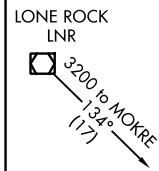
MISSED APPROACH: Climb to 3000 direct FOMAG and hold.

MADISON APP CON★ **135.45 343.7**

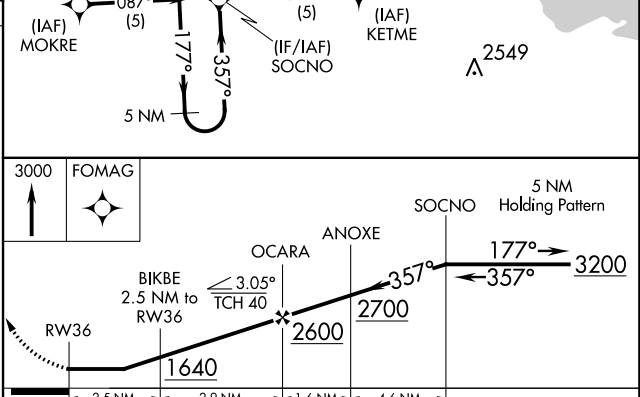
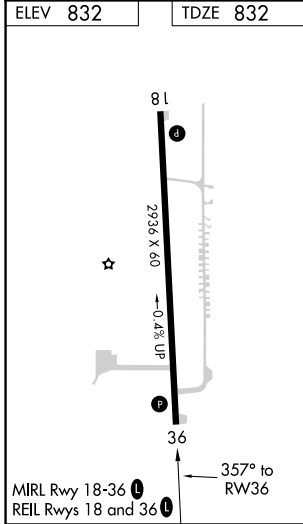
CTAF **122.9**



Procedure NA for arrivals at LNR VOR/DME airway radials 134 CW 147.



ELEV 832 TDZE 832



CATEGORY	A	B	C	D
LNAV MDA	1400-1	568 (600-1)		NA
CIRCLING	1400-1	568 (600-1)		NA

EC-3, 22 JUN 2017 to 20 JUL 2017

EC-3, 22 JUN 2017 to 20 JUL 2017