

|  |                        |   |
|--|------------------------|---|
| WAAS<br>CH <b>69427</b><br><b>W11A</b> | APP CRS<br><b>114°</b> | Rwy Idg<br>THRE <b>2131</b><br>Apt Elev <b>2131</b> |
|--|------------------------|---|

# RNAV (GPS) RWY 11

ATKINSON/ STUART-ATKINSON MUNI (8V2)

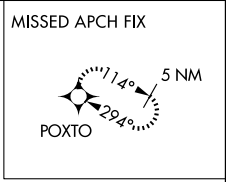
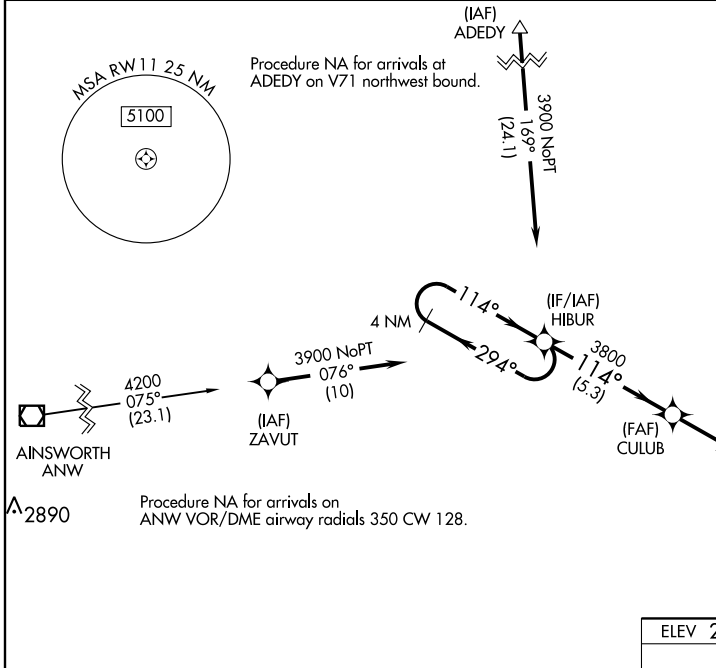
**Baro-VNAV NA.** Use O'Neill altimeter setting; when not received, use Ainsworth altimeter setting and increase LPV DA to 2543 feet and visibility all Cats to 1 1/8 mile, LNAV/VNAV DA to 2558 feet and visibility all Cats to 1 1/2 mile, increase all MDA 120 feet. DME/DME RNP-0.3 NA.

**MISSED APPROACH:** Climb to 5000 direct POXTO and hold, continue climb-in-hold to 5000.

O'NEILL AWOS-3  
**121.125**

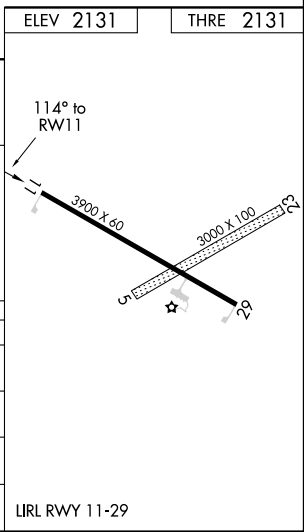
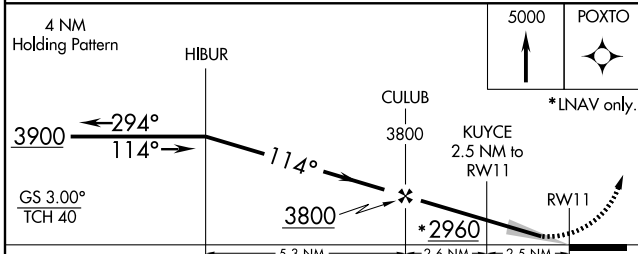
MINNEAPOLIS CENTER  
**128.0 385.5**

CTAF  
**122.9**



NC-2, 31 MAY 2012 to 28 JUN 2012

NC-2, 31 MAY 2012 to 28 JUN 2012



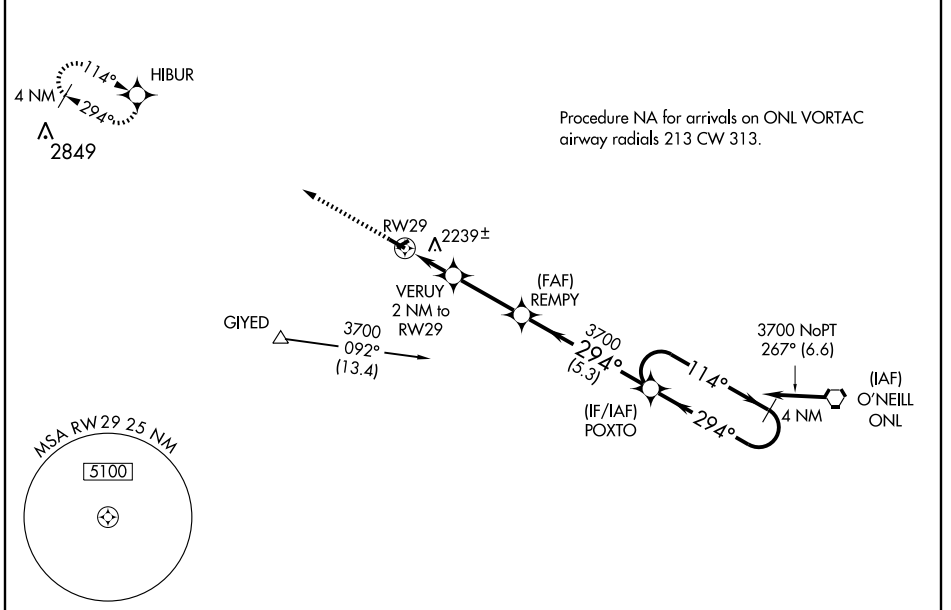
| CATEGORY     | A                     | B                     | C | D  |
|--------------|-----------------------|-----------------------|---|----|
| LPV DA       | 2433-1                | 302 (400-1)           |   | NA |
| LNAV/VNAV DA | 2448-1                | 317 (400-1)           |   | NA |
| LNAV MDA     | 2560-1                | 429 (500-1)           |   | NA |
| CIRCLING     | 2620-1<br>489 (500-1) | 2640-1<br>509 (600-1) |   | NA |

|  |                        |   |
|--|------------------------|---|
| WAAS<br>CH <b>53627</b><br><b>W29A</b> | APP CRS<br><b>294°</b> | Rwy Idg<br>THRE <b>2126</b><br>Apt Elev <b>2131</b> |
|--|------------------------|---|

# RNAV (GPS) RWY 29

ATKINSON/ STUART-ATKINSON MUNI (8V2)

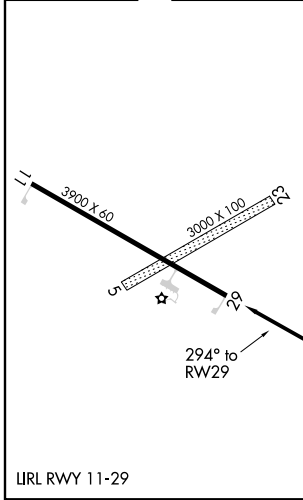
|  |  |  |
|--|--|--|
| <p><b>NA</b> Baro-VNAV NA. Use O'Neill altimeter setting; when not received, use Ainsworth altimeter setting and increase LPV DA to 2538 feet and visibility all Cats to 1 3/8 mile, LNAV/VNAV DA to 2563 feet and visibility all Cats to 1 1/2 mile, increase all MDA 120 feet. DME/DME RNP-0.3 NA.</p> |  | <p>MISSED APPROACH: Climb to 3900 direct HIBUR and hold.</p> |
| O'NEILL AWOS-3<br><b>121.125</b>   | MINNEAPOLIS CENTER<br><b>128.0 385.5</b> | CTAF<br><b>122.9</b>   |



NC-2, 31 MAY 2012 to 28 JUN 2012

NC-2, 31 MAY 2012 to 28 JUN 2012

|           |           |
|-----------|-----------|
| ELEV 2131 | THRE 2126 |
|-----------|-----------|



|  |                       |                       |   |    |
|--|-----------------------|-----------------------|---|----|
| 3900   | HIBUR                 | 4 NM Holding Pattern  |   |    |
| <p>*LNAV only. VERUY 2 NM to RW29. *2800. REMPY 3700. POXTO 3700. 294°. 114°. 3700. GS 3.00° TCH 40.</p> |                       |                       |   |    |
| CATEGORY   | A                     | B                     | C | D  |
| LPV DA   | 2428-1                | 302 (300-1)           |   | NA |
| LNAV/VNAV DA   | 2453-1 1/8            | 327 (400-1 1/8)       |   | NA |
| LNAV MDA   | 2560-1                | 434 (500-1)           |   | NA |
| CIRCLING   | 2620-1<br>489 (500-1) | 2620-1<br>509 (600-1) |   | NA |

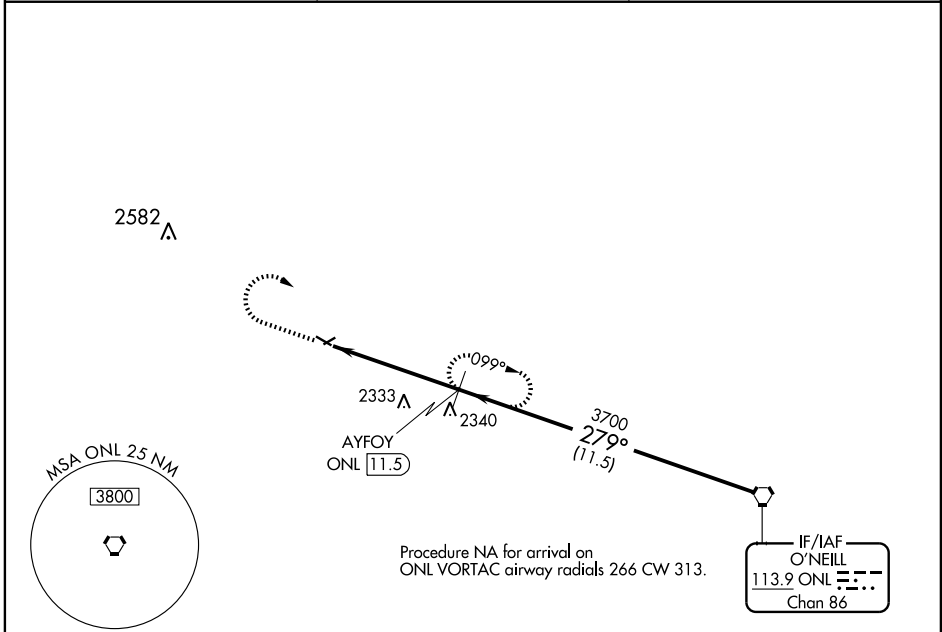
|  |                        |   |
|--|------------------------|---|
| VORTAC ONL<br><b>113.9</b><br>Chan <b>86</b> | APP CRS<br><b>279°</b> | Rwy Idg<br>THRE <b>2126</b><br>Apt Elev <b>2131</b> |
|--|------------------------|---|

**VOR/DME RWY 29**  
ATKINSON/STUART-ATKINSON MUNI (8V2)

**NA** Use O'Neill altimeter setting; when not received, use Ainsworth altimeter setting and increase all MDA 120 feet.

MISSED APPROACH: Climb to 3700 then right turn on ONL VORTAC R-279 to AYFOY/ONL 11.5 DME and hold.

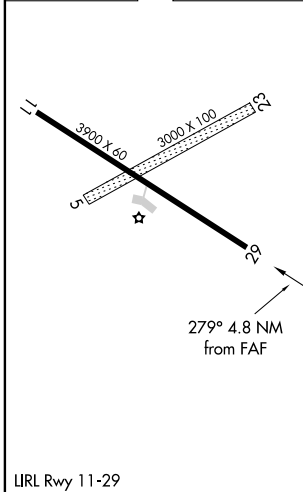
|                                  |  |                      |
|----------------------------------|--|----------------------|
| O'NEILL AWOS-3<br><b>121.125</b> | MINNEAPOLIS CENTER<br><b>128.0 385.5</b> | CTAF<br><b>122.9</b> |
|----------------------------------|--|----------------------|



NC-2, 31 MAY 2012 to 28 JUN 2012

NC-2, 31 MAY 2012 to 28 JUN 2012

|           |           |
|-----------|-----------|
| ELEV 2131 | THRE 2126 |
|-----------|-----------|



|           |                |                |           |    |
|-----------|----------------|----------------|-----------|----|
| 3700      | AYFOY ONL 11.5 | AYFOY ONL 11.5 | VORTAC    |    |
| ONL R-279 | ONL 16.3       | 3700           | 279° 3700 |    |
|           | 4.8 NM         | 11.5 NM        |           |    |
| CATEGORY  | A              | B              | C         | D  |
| S-29      | 2640-1         | 514 (600-1)    | NA        | NA |
| CIRCLING  | 2640-1         | 509 (600-1)    | NA        | NA |