

WAAS CH 69427 W11A	APP CRS 114°	Rwy Idg THRE 2131 Apt Elev 2131
----------------------------------------	------------------------	-----------------------------------------------------

RNAV (GPS) RWY 11

ATKINSON/STUART-ATKINSON MUNI (8V2)

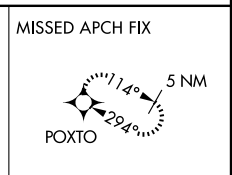
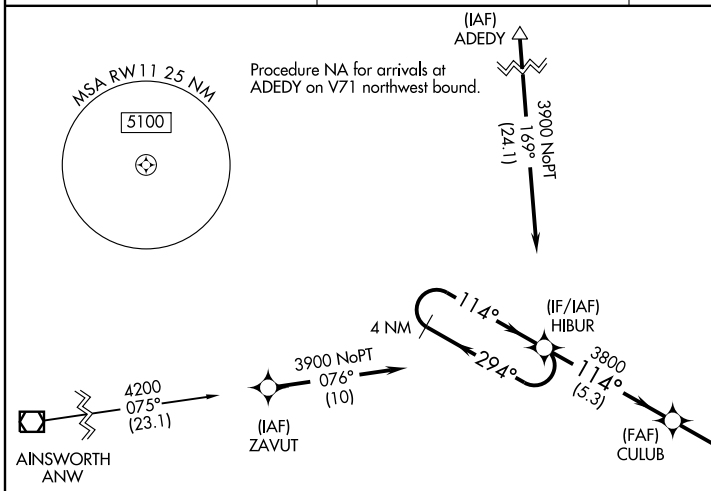
Baro-VNAV NA. Use O'Neill altimeter setting; when not received, use Ainsworth altimeter setting and increase LPV DA to 2543 feet and visibility all Cats to 1 3/8 mile, LNAV/VNAV DA to 2558 feet and visibility all Cats to 1 1/2 mile, increase all MDA 120 feet. DME/DME RNP-0.3 NA.

MISSED APPROACH: Climb to 5000 direct POXTO and hold, continue climb-in-hold to 5000.

O'NEILL AWOS-3
121.125

MINNEAPOLIS CENTER
128.0 385.5

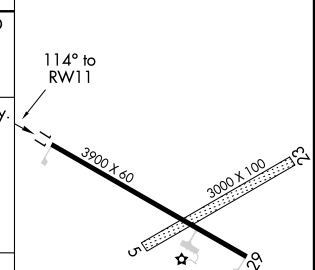
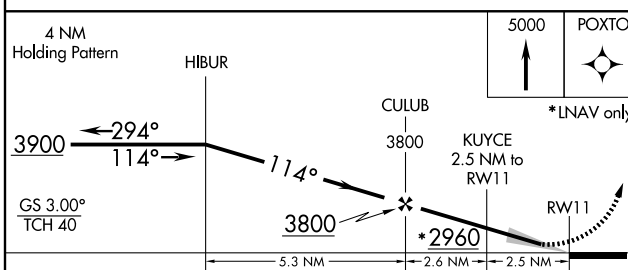
CTAF
122.9



NC-2, 31 MAY 2012 to 28 JUN 2012

NC-2, 31 MAY 2012 to 28 JUN 2012

ELEV 2131	THRE 2131
-----------	-----------



CATEGORY	A	B	C	D
LPV DA	2433-1	302 (400-1)		NA
LNAV/VNAV DA	2448-1	317 (400-1)		NA
LNAV MDA	2560-1	429 (500-1)		NA
CIRCLING	2620-1 489 (500-1)	2640-1 509 (600-1)		NA

LIRL RWY 11-29

WAAS CH 53627 W29A	APP CRS 294°	Rwy Idg THRE 2126 Apt Elev 2131	3900
----------------------------------------	------------------------	-----------------------------------------------------	-------------

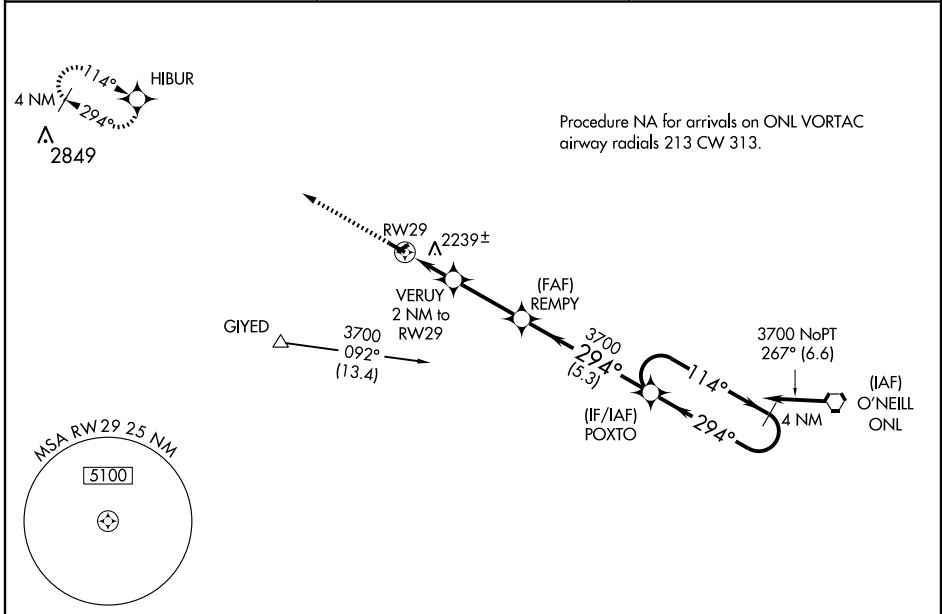
RNAV (GPS) RWY 29

ATKINSON/ STUART-ATKINSON MUNI (8V2)

NA Baro-VNAV NA. Use O'Neill altimeter setting; when not received, use Ainsworth altimeter setting and increase LPV DA to 2538 feet and visibility all Cats to 1 3/8 mile, LNAV/VNAV DA to 2563 feet and visibility all Cats to 1 1/2 mile, increase all MDA 120 feet. DME/DME RNP-0.3 NA.

MISSED APPROACH: Climb to 3900 direct HIBUR and hold.

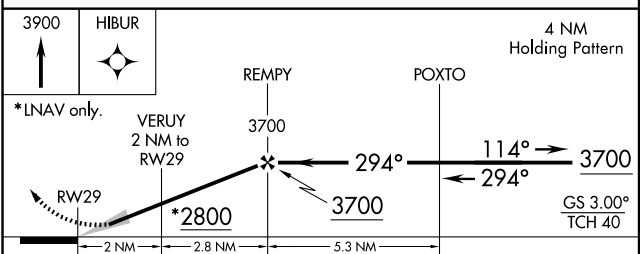
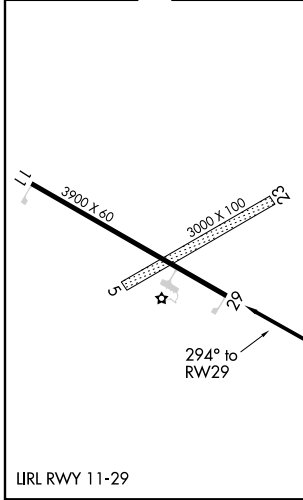
O'NEILL AWOS-3 121.125	MINNEAPOLIS CENTER 128.0 385.5	CTAF 122.9
----------------------------------	------------------------------------------	----------------------



NC-2, 31 MAY 2012 to 28 JUN 2012

NC-2, 31 MAY 2012 to 28 JUN 2012

ELEV 2131	THRE 2126
-----------	-----------



CATEGORY	A	B	C	D
LPV DA	2428-1	302 (300-1)		NA
LNAV/VNAV DA	2453-1 1/8	327 (400-1 1/8)		NA
LNAV MDA	2560-1	434 (500-1)		NA
CIRCLING	2620-1 489 (500-1)	2620-1 509 (600-1)		NA

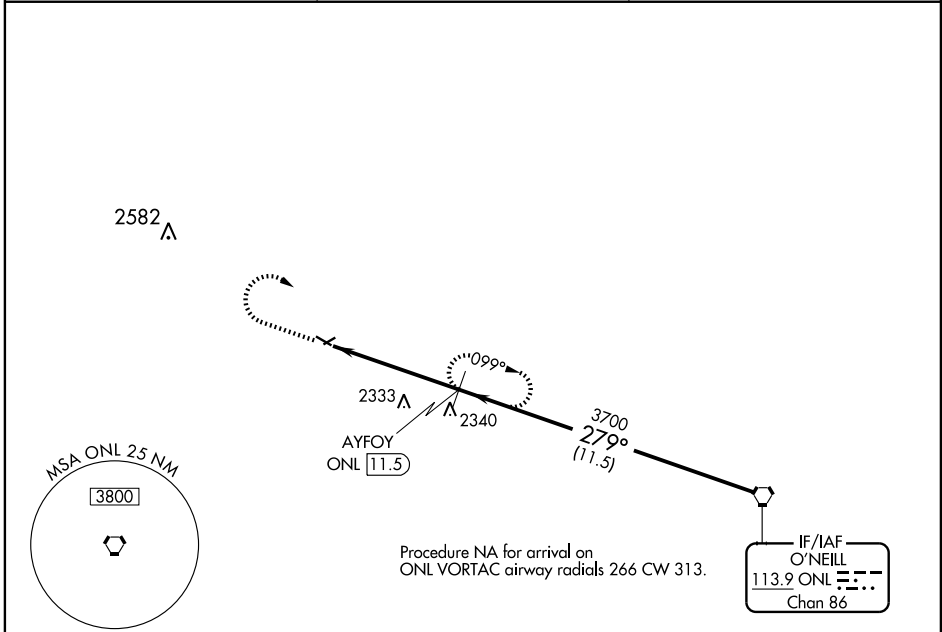
VORTAC ONL 113.9 Chan 86	APP CRS 279°	Rwy Idg THRE 2126 Apt Elev 2131
----------------------------------------------	------------------------	-----------------------------------------------------

VOR/DME RWY 29
ATKINSON/STUART-ATKINSON MUNI (8V2)

NA Use O'Neill altimeter setting; when not received, use Ainsworth altimeter setting and increase all MDA 120 feet.

MISSED APPROACH: Climb to 3700 then right turn on ONL VORTAC R-279 to AYFOY/ONL 11.5 DME and hold.

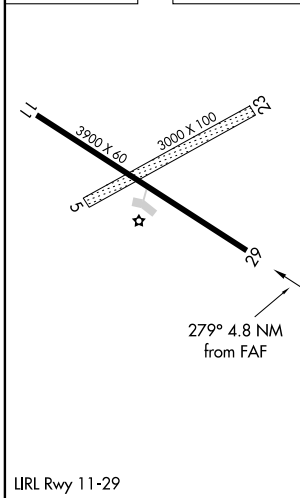
O'NEILL AWOS-3 121.125	MINNEAPOLIS CENTER 128.0 385.5	CTAF 122.9
----------------------------------	------------------------------------------	----------------------



NC-2, 31 MAY 2012 to 28 JUN 2012

NC-2, 31 MAY 2012 to 28 JUN 2012

ELEV 2131	THRE 2126
-----------	-----------



	3700 ONL R-279	AYFOY ONL 11.5	AYFOY ONL 11.5	VORTAC
	ONL 16.3	3700	279°	3700
	4.8 NM	3.00° TCH 40	11.5 NM	
CATEGORY	A	B	C	D
S-29	2640-1	514 (600-1)		NA
CIRCLING	2640-1	509 (600-1)		NA

**TAKE-OFF MINIMUMS AND (OBSTACLE) DEPARTURE PROCEDURES**

12152

INSTRUMENT APPROACH PROCEDURE CHARTS

**IFR TAKE-OFF MINIMUMS AND (OBSTACLE) DEPARTURE PROCEDURES**

ALL USERS: Airports that have Departure Procedures (DPs) designed specifically to assist pilots in avoiding obstacles during the climb to the minimum enroute altitude, and/or airports that have civil IFR take-off minimums other than standard, are listed below. Take-off Minimums and Departure Procedures apply to all runways unless otherwise specified. Altitudes, unless otherwise indicated, are minimum altitudes in MSL.

DPs specifically designed for obstacle avoidance are referred to as Obstacle Departure Procedures (ODPs) and are described below in text, or published separately as a graphic procedure. If the (Obstacle) DP is published as a graphic procedure, its name will be listed below, and it can be found in either this volume (civil), or the applicable military volume, as appropriate. Users will recognize graphic obstacle DPs by the term "(OBSTACLE)" included in the procedure title; e.g., TETON TWO (OBSTACLE). If not specifically assigned a departure procedure (i.e., ODP, SID, or radar vector) as part of an IFR clearance, an ODP may be required to be flown for obstacle clearance, even though not specifically stated in the IFR clearance. When doing so in this manner, ATC should be informed when the ODP being used contains a specified route to be flown, restrictions before turning, and/or altitude restrictions.

Graphic DPs designed by ATC to standardize traffic flows, ensure aircraft separation and enhance capacity are referred to as "Standard Instrument Departures (SIDs)". SIDs also provide obstacle clearance and are published under the appropriate airport section. ATC clearance must be received prior to flying a SID.

CIVIL USERS NOTE: Title 14 Code of Federal Regulations Part 91 prescribes standard take-off rules and establishes take-off minimums for certain operators as follows: (1) Aircraft having two engines or less - one statute mile. (2) Aircraft having more than two engines - one-half statute mile. These standard minima apply in the absence of any different minima listed below.

MILITARY USERS NOTE: Civil (nonstandard) take-off minima are published below. For military take-off minima, refer to appropriate service directives.

NAME TAKE-OFF MINIMUMS

ABILENE, KS

ABILENE MUNI (K78)

ORIG 11349 (FAA)

DEPARTURE PROCEDURE: **Rwy 35**, climb heading 353° to 2000 before turning right.NOTE: **Rwy 17**, vehicle on road abeam DER, 460' right of centerline, 15' AGL/1164' MSL. Trees beginning 2455' from DER, 416' left of centerline, 100' AGL/1249' MSL. **Rwy 35**, trees beginning 745' from DER, 105' left of centerline, 100' AGL/1259' MSL. Railroad 738' from DER, on centerline, 23' AGL/1182' MSL.**AINSWORTH, NE**

AINSWORTH RGNL (ANW)

ORIG 08157 (FAA)

NOTE: **Rwy 31**, fence 81' from departure end of runway, 374' right of centerline, 3' AGL/2589' MSL.

NAME TAKE-OFF MINIMUMS

ALBION, NE

ALBION MUNI (BVN)

AMDT 1 08269 (FAA)

NOTE: **Rwy 15**, trees beginning 370' from departure end of runway, 72' left of centerline up to 98' AGL/1868' MSL. Fence and trees beginning 4' from departure end of runway, 114' right of centerline, up to 61' AGL/1831' MSL. **Rwy 33**, trees, vehicles, terrain, and equipment beginning 93' from departure end of runway, 24' right of centerline, up to 52' AGL/1871' MSL. Trees, building, and equipment 175' from departure end of runway, 12' left of centerline, up to 57' AGL/1863' MSL.**ANTHONY, KS**

ANTHONY MUNI (ANY)

ORIG 12152 (FAA)

TAKE-OFF MINIMUMS: **Rwys 10, 28**, NA - environmental.NOTE: **Rwy 18**, trees beginning at DER, 391' right of centerline, up to 25' AGL/1354' MSL. Building 598' from DER, 200' right of centerline, 20' AGL/1349' MSL. Powerlines beginning 496' from DER, crossing centerline east to west, up to 32' AGL/1361' MSL. Beacon 701' from DER, 634' left of centerline, up to 60' AGL/1389' MSL. Antenna 1050' from DER, 40' right of centerline, 34' AGL/1363' MSL. **Rwy 36**, powerlines beginning 1050' from DER, crossing centerline east to west, up to 32' AGL/1371' MSL. Trees beginning 67' from DER, 367' left of centerline, up to 25' AGL/1364' MSL.

12152

**TAKE-OFF MINIMUMS AND (OBSTACLE) DEPARTURES PROCEDURES**



TAKE-OFF MINIMUMS AND (OBSTACLE) DEPARTURE PROCEDURES



12152

ATCHISON, KS

AMELIA EARHART (K59)
ORIG 11293 (FAA)

NOTE: **Rwy 16**, trees beginning 135' from DER, 291' left of centerline, up to 100' AGL/1177' MSL. Trees beginning 301' from DER, 230' right of centerline, up to 100' AGL/1161' MSL. Vehicle on road, 25' from DER, crossing centerline, 15' AGL/1093' MSL. **Rwy 34**, trees beginning 974' from DER, 639' left of centerline, up to 100' AGL/1105' MSL. Trees beginning 85' from DER, 308' right of centerline, up to 100' AGL/1105' MSL. Vehicle on road, 25' from DER, crossing centerline, 15' AGL/1043' MSL.

ATKINSON, NE

STUART-ATKINSON MUNI (8V2)
AMDT 1 12124 (FAA)

TAKE-OFF MINIMUMS: **Rwys 5, 23**, NA - Environmental.

NOTE: **Rwy 29**, pole 585' from DER, 466' left of centerline, 36' AGL/2162' MSL.

ATWOOD, KS

ATWOOD-RAWLINS COUNTY CITY - CO (ADT)
ORIG 10210 (FAA)

TAKE-OFF MINIMUMS: **Rwys 17, 35, 3, 21**, NA-Environmental. **Rwy 16**, 300-1½ or std. w/min. climb of 285' per NM to 3300.

NOTE: **Rwy 16**, tower 1.2 NM from DER, 352' left of centerline, 255' AGL/3125' MSL. **Rwy 34**, multiple poles beginning 402' from DER, 437' left of centerline, up to 31' AGL/3030' MSL. Vehicle on road 585' from DER, right to left of centerline, up to 15' AGL/3025' MSL.

AUGUSTA, KS

AUGUSTA MUNI (3AU)
AMDT 1 12040 (FAA)

NOTE: **Rwy 18**, terrain, 51' from DER, 463' right of centerline, 1309' MSL. Vehicle on road, 102' from DER, left to right of centerline, up to 15' AGL/1324' MSL. Trees beginning 301' from DER, 489' left of centerline, up to 35' AGL/1344' MSL. **Rwy 36**, terrain and trees 21' from DER, 51' left of centerline, up to 35' AGL/1374' MSL. Terrain and trees 56' from DER, 155' right of centerline, up to 35' AGL/1374' MSL. Vehicle on road, 744' from DER, left to right of centerline, up to 17' AGL/1356' MSL.

AURORA, NE

AURORA MUNI - AL POTTER FIELD (AUH)
ORIG 08269 (FAA)

NOTE: **Rwy 16**, trees beginning 74' from departure end of runway, 436' left of centerline, up to 70' AGL/1876' MSL. Vehicles on roadway beginning 396' from departure end of runway, left and right of centerline, up to 15' AGL/1814' MSL. Tree 614' from departure end of runway, 577' right of centerline, 50' AGL/1859' MSL. **Rwy 34**, fence 9' from departure end of runway, 470' left of centerline, 4' AGL/1806' MSL. Vehicles on roadway beginning 93' from departure end of runway, 511' left of centerline, up to 15' AGL/1824' MSL. Tree 135' from departure end of runway, 417' right of centerline, 12' AGL/1812' MSL. Wood power poles beginning 320' from departure end of runway, 289' left of centerline, up to 61' AGL/1863' MSL. Vehicles on roadway beginning 480' from departure end of runway, left and right of centerline, up to 15' AGL/1824' MSL. Trees beginning 722' from departure end of runway, 376' left of centerline, up to 46' AGL/1847' MSL. Chimney 770' from departure end of runway, 500' left of centerline, 24' AGL/1827' MSL. Antennas beginning 802' from departure end of runway, 479' left of centerline, up to 35' AGL/1835' MSL.

BASSETT, NE

ROCK COUNTY (RBE)
AMDT2 10098 (FAA)

TAKE-OFF MINIMUMS: **Rwys 2, 20**, NA-Environmental. NOTE: **Rwy 13**, fence and trees beginning 12' from DER, 298' left of centerline, up to 60' AGL/2449' MSL. Fence and trees beginning 16' from DER, 320' right of centerline, up to 60' AGL/2459' MSL. **Rwy 31**, rising terrain, trees, and train on railroad tracks beginning 2' from DER, 155' left of centerline, up to 60' AGL/2409' MSL. Sign, obstruction light on airport beacon and multiple vehicles, towers, trees, fences, and fuel farms beginning 31' from DER, 330' right of centerline, up to 58' AGL/2403' MSL. Train on railroad tracks, multiple buildings, vehicles and trees beginning 353' from DER, 322' right of centerline, up to 80' AGL/2416' MSL.

BEATRICE, NE

BEATRICE MUNI (BIE)
AMDT 1 11349 (FAA)

DEPARTURE PROCEDURE: **Rwy 18**, Climb heading 176° to 1900 before turning right.
NOTE: **Rwy 14**, trees beginning 696' from DER, 438' left of centerline, up to 51' AGL/1360' MSL. Light pole 1208' from DER, 212' left of centerline, 35' AGL/1344' MSL. **Rwy 32**, tree 859' from DER, 320' left of centerline, 27' AGL/1346' MSL. **Rwy 36**, trees beginning 779' from DER, 349' right of centerline, up to 58' AGL/1367' MSL. Tree 1193' from DER, 50' left of centerline, 48' AGL/1357' MSL.

31 MAY 2012 to 28 JUN 2012

31 MAY 2012 to 28 JUN 2012

12152



TAKE-OFF MINIMUMS AND (OBSTACLE) DEPARTURES PROCEDURES



**TAKE-OFF MINIMUMS AND (OBSTACLE) DEPARTURE PROCEDURES**

12152

BELLEVILLE, KS

BELLEVILLE MUNI (RPB)

ORIG 11293 (FAA)

TAKE-OFF MINIMUMS: **Rwys 14, 32**, NA-
Environmental.

NOTE: **Rwy 18**, power pole 16' from DER, 394' left of centerline, 37' AGL/1557' MSL. Wind sock and buildings 33' from DER, 374' left of centerline, 60' AGL/1570' MSL. Beacon 136' from DER, 488' left of centerline, 69' AGL/1579' MSL. Trees and power pole beginning 129' from DER, 397' left of centerline 66' AGL/1576' MSL. Tree row 371' from DER, 162' left of centerline, 48' AGL/1558' MSL. Trees 354' from DER, 464' left of centerline, 62' AGL/1572' MSL. **Rwy 36**, train 693' from DER, right and left of centerline, 23' AGL/1552' MSL. Trees beginning 240' from DER, 285' right of centerline, 36' AGL/1546' MSL. Tree line 710' from DER, right and left of centerline, 45' AGL/1545' MSL.

BELOIT, KS

MORITZ MEMORIAL (K61)

AMDT 1 94118 (FAA)

TAKE-OFF MINIMUMS: **Rwys 4, 8, 22, 26**, NA.DEPARTURE PROCEDURE: **Rwys 17, 35**, climb to 2400 before turning east on course.**BENTON, KS**

LLOYD STEARMAN FIELD (1K1)

ORIG 10210 (FAA)

NOTE: **Rwy 35**, vehicle on road beginning 20' from DER, left and right of centerline, up to 15' AGL/1384' MSL. Tree 2689' from DER, 1125' left of centerline, 100' AGL/1489' MSL.

BLAIR, NE

BLAIR MUNI (BTA)

ORIG 09183 (FAA)

DEPARTURE PROCEDURE: **Rwy 13**, climb on a heading between 124°CCW to 314° from DER or minimum climb of 239' per NM to 3000 for all other courses.

NOTE: **Rwy 13**, rising terrain beginning at DER, 183' right of centerline, up to 1319' MSL. **Rwy 31**, trees beginning 434' from DER, 1' right of centerline, up to 35' AGL/1364' MSL.

BROKEN BOW, NE

BROKEN BOW MUNI/KEITH GLAZE FLD (BBW)

AMDT 3 11013 (FAA)

TAKE-OFF MINIMUMS: **Rwy 14**, 400-2¾ or std. w/ min. climb of 240' per NM to 3100. **Rwy 32**, 300-2 or std. w/ min. climb of 392' per NM to 3300.

NOTE: **Rwy 14**, satellite dish 202' from DER, 404' left of centerline, 43' AGL/2572' MSL. Numerous trees beginning 1446' from DER, 20' right and left of centerline, up to 44' AGL/2574' MSL. Numerous buildings beginning 2566' from DER, 562' right of centerline, up to 66' AGL/2599' MSL. Tower 2.3 NM from DER, 1852' right of centerline, 305' AGL/2931' MSL. **Rwy 32**, trees beginning 713' from DER, 661' left of centerline, up to 64' AGL/2623' MSL. Numerous trees beginning 1220' from DER, 654' right of centerline, up to 81' AGL/2647' MSL. Rising terrain beginning 1279' from DER, left and right of centerline, up to 2815' MSL.

12152

**TAKE-OFF MINIMUMS AND (OBSTACLE) DEPARTURES PROCEDURES****BURLINGTON, KS**

COFFEY COUNTY (UKL)

ORIG 11181 (FAA)

NOTE: **Rwy 18**, vehicles on road beginning 291' from DER, 4' right of centerline, up to 10' AGL/1188' MSL. Vehicles on road beginning 105' from DER, 103' left of centerline, up to 10' AGL/1178' MSL. Terrain, 53' from DER, 434' right of centerline, 1175' MSL. **Rwy 36**, vehicles on road beginning 187' from DER, 238' left of centerline, up to 10' AGL/1186' MSL. Terrain, 77' from DER, 44' left of centerline, 1175' MSL.

CENTRAL CITY, NE

CENTRAL CITY MUNI-LARRY REINEKE FIELD (07K)

ORIG 11181 (FAA)

NOTE: **Rwy 16**, multiple power poles beginning 740' from DER, 57' right of centerline, up to 30' AGL/1746' MSL. Multiple power poles beginning 901' from DER, 64' left of centerline, up to 30' AGL/1746' MSL. Trees beginning 1765' from DER, 467' right of centerline, up to 59' AGL/1773' MSL. **Rwy 34**, trees beginning 1002' from DER, 260' right of centerline, up to 61' AGL/1773' MSL.

CHADRON, NE

CHADRON MUNI (CDR)

ORIG 11237 (FAA)

TAKE-OFF MINIMUMS: **Rwy 11**, std. w/ min. climb of 240' per NM to 4900 or 1200-3 for climb in visual conditions. **Rwy 20**, 300-1½ or std. w/ min. climb of 220' per NM to 3600, or alternatively, with standard takeoff minimums and a normal 200' per NM climb gradient, takeoff must occur no later than 1500' prior to DER.

DEPARTURE PROCEDURE: **Rwy 11**, for climb in visual conditions cross Chadron Muni Airport at or above 4300 before proceeding on course. **Rwy 20**, climb heading 204° to 3900 before proceeding on course.

NOTE: **Rwy 2**, trees beginning 216' from DER, 532' left of centerline, up to 70' AGL/3310' MSL. Trees and antenna on building beginning 269' from DER, 225' right of centerline, up to 59' AGL/3299' MSL. **Rwy 11**, fence beginning 163' from DER, 255' left of centerline, up to 19' AGL/3299' MSL. Pole, vehicle on road, trees, and building beginning 947' from DER, 233' right of centerline, up to 51' AGL/3351' MSL. **Rwy 20**, pole 1.2 NM from DER, 1669' left of centerline, 55' AGL/3495' MSL. **Rwy 29**, trees beginning 53' from DER, 370' right of centerline, up to 88' AGL/3332' MSL. Trees beginning 1023' from DER, 757' left of centerline, up to 92' AGL/3332' MSL.

CHANUTE, KS

CHANUTE MARTIN JOHNSON (CNU)

ORIG 10154 (FAA)

DEPARTURE PROCEDURE: **Rwy 36**, climb heading 002° to 1500 before turning right.

NOTE: **Rwy 18**, trains on railroad beginning 210' from DER, from left to right of centerline, up to 23' AGL/1022' MSL. Trees beginning 2437' from DER, from left to right of centerline, up to 100' AGL/1079' MSL. **Rwy 36**, vehicles on road beginning 316' from DER, from left to right of centerline, up to 15' AGL/994' MSL. Trees beginning 447' from DER, 522' left of centerline, up to 100' AGL/1079' MSL. Trees beginning 519' from DER, 619' right of centerline, up to 100' AGL/1079' MSL.

31 MAY 2012 to 28 JUN 2012

31 MAY 2012 to 28 JUN 2012



TAKE-OFF MINIMUMS AND (OBSTACLE) DEPARTURE PROCEDURES



12152

CLAY CENTER, KS

CLAY CENTER MUNI (CYW)

AMDT 1 11013 (FAA)

NOTE: **Rwy 17**, vehicle on road 450' from DER, left and right of centerline, 15' AGL/1221' MSL.**COFFEYVILLE, KS**

COFFEYVILLE MUNI (CFV)

AMDT 1 10210 (FAA)

NOTE: **Rwy 17**, trees beginning 3041' from DER, left and right of centerline, up to 100' AGL/849' MSL. **Rwy 35**, trees beginning 2442' from DER, left and right of centerline, up to 100' AGL/859' MSL.**COLBY, KS**

SHALZ FIELD (CBK)

ORIG 08269 (FAA)

TAKE-OFF MINIMUMS: **Rwys 4, 12, 22, 30**, N/A-Environmental.NOTE: **Rwy 17**, terrain beginning 7' from departure end of runway, 193' right of centerline, up to 3156' MSL. Trees beginning 3708' from departure end of runway, 1072' right of centerline, up to 100' AGL/3249' MSL. Vehicle and road beginning 550' from departure end of runway, 35' left to right of centerline, 15' AGL/3174' MSL.**Rwy 35**, terrain beginning 205' from departure end of runway, 248' left of centerline, up to 3196' MSL.**COLUMBUS, NE**

COLUMBUS MUNI (OLU)

AMDT 5 05244 (FAA)

TAKE-OFF MINIMUMS: **Rwy 2**, 300-1 or std. with a min. climb of 331' per NM to 1800.NOTE: **Rwy 2**, tower 4681' from departure end of runway, 976' left of centerline, 141' AGL/1624' MSL. Pole 5533' from departure end of runway, 1626' left of centerline, 110' AGL/1632' MSL. **Rwy 14**, multiple trees and antenna beginning 2378' from departure end of runway, 934' left of centerline, up to 71' AGL/1508' MSL. **Rwy 20**, tower 3378' from departure end of runway, 1053' left of centerline, 131' AGL/1570' MSL. **Rwy 32**, multiple tree and towers beginning 2976' from departure end of runway, 284' right of centerline, 65' AGL/1525' MSL. Tower 3157' from departure end of runway, 254' left of centerline, 73' AGL/1527' MSL.**CONCORDIA, KS**

BLOSSER MUNI (CNK)

AMDT 1 99084 (FAA)

TAKE-OFF MINIMUMS: **Rwys 3, 12, 21, 30**, NA.**COZAD, NE**

COZAD MUNI (CZD)

AMDT 1 08157 (FAA)

TAKE-OFF MINIMUMS: **Rwys 18, 36**, NA- Environmental. NOTE: **Rwy 13**, grain elevators 3968' from departure end of runway, 103' right of centerline, 157' AGL/2678' MSL. Multiple poles beginning 13' from departure end of runway, 372' right of centerline, up to 43' AGL/2540' MSL. Multiple buildings beginning 97' from departure end of runway, 356' right of centerline, up to 18' AGL/2515' MSL. Fuel tank 22' from departure end of runway, 372' right of centerline, 13' AGL/2509' MSL. Antenna on grain elevator, 3672' from departure end of runway, 392' left of centerline, 189' AGL/2678' MSL. Multiple trees beginning 222' from departure end of runway, 24' left of centerline, up to 68' AGL/2562' MSL. Grain elevator 5482' from departure end of runway, 1120' from departure end of runway, 170' AGL/2660' MSL. Building light 5439' from departure end of runway, 1086' left of centerline, 167' AGL/2657' MSL. Multiple light poles beginning 290' from departure end of runway, 370' left of centerline, up to 57' AGL/2551' MSL. Multiple satellite dishes beginning 870' from departure end of runway, 432' left of centerline, up to 54' AGL/2549' MSL. Multiple buildings beginning 141' from departure end of runway, 88' left of centerline, up to 56' AGL/2550' MSL. Fence 1' from departure end of runway, 369' left of centerline, 4' AGL/2500' MSL. Diving board 575' from departure end of runway, 572' left of centerline, 13' AGL/2513' MSL. **Rwy 31**, multiple trees and buildings beginning 136' from departure end of runway, 450' right of centerline, up to 100' AGL/2604' MSL. Building 608' from departure end of runway, 547' left of centerline, up to 50' AGL/2554' MSL.**CREIGHTON, NE**

CREIGHTON MUNI (6K3)

ORIG 11125 (FAA)

NOTE: **Rwy 13**, trees beginning 400' from DER, 328' left of centerline, up to 40' AGL/1689' MSL. Vehicle on road 421' from DER, 554' left of centerline, 15' AGL/1656' MSL. Building 663' from DER, 469' left of centerline, 25' AGL/1661' MSL. **Rwy 31**, trees beginning 766' from DER, 545' right of centerline, up to 40' AGL/1664' MSL.**CRETE, NE**

CRETE MUNI (CEK)

AMDT 1 08213 (FAA)

TAKE-OFF MINIMUMS: **Rwys 13, 31**, NA- Environmental. NOTE: **Rwy 17**, numerous trees 193' from departure end of runway, 164' left of centerline, 42' AGL/1509' MSL. Numerous trees 18' from departure end of runway, 298' right of centerline, 20' AGL/1486' MSL. **Rwy 35**, numerous trees and building 201' from departure end of runway, 259' right of centerline, 62' AGL/1580' MSL. Buildings 72' from departure end of runway, 400' left of centerline, 20' AGL/1514' MSL.**DAVID CITY, NE**

DAVID CITY MUNI (93Y)

AMDT 1 09351 (FAA)

TAKE-OFF MINIMUMS: **Rwys 1, 19**, NA-turf runway. NOTE: **Rwy 32**, trees beginning at DER, 327' left of centerline, up to 29' AGL/1642' MSL. Trees beginning 1864' from DER, 99' left of centerline, up to 58' AGL/1671' MSL. Vehicle on highway 886' from DER, 711' left of centerline, 15' AGL/1636' MSL.

31 MAY 2012 to 28 JUN 2012

31 MAY 2012 to 28 JUN 2012

12152



TAKE-OFF MINIMUMS AND (OBSTACLE) DEPARTURE PROCEDURES





TAKE-OFF MINIMUMS AND (OBSTACLE) DEPARTURE PROCEDURES



12152

EL DORADO, KS

CAPTAIN JACK THOMAS/EL DORADO (EQA)
ORIG 11069 (FAA)

NOTE: **Rwy 4**, tree 1819' from DER, 561' right of centerline, 100' AGL/1499' MSL. Vehicle on road 806' from DER, crossing centerline left to right, 15' AGL/1404' MSL. **Rwy 15**, trees beginning 963' from DER, 613' left of centerline, up to 100' AGL/1459' MSL. Tree 536' from DER, 507' right of centerline, 29' AGL/1399' MSL. Vehicle on road 556' from DER, crossing centerline right to left, 15' AGL/1394' MSL. **Rwy 22**, vehicle on road 267' from DER, crossing centerline right to left, 15' AGL/1394' MSL. Tree 1470' from DER, 538' left of centerline, 100' AGL/1469' MSL. **Rwy 33**, multiple trees beginning 43' from DER, 61' left of centerline, up to 100' AGL/1469' MSL. Vehicle on road 488' from DER, crossing centerline right to left, 15' AGL/1394' MSL.

ELKHART, KS

ELKHART-MORTON COUNTY (EHA)

AMDT 1 10154 (FAA)

DEPARTURE PROCEDURE: **Rwy 22**, climb heading 221° to 4100 before turning right.

NOTE: **Rwy 4**, tree 181' from DER, 425' left of centerline, 100' AGL/3689' MSL. **Rwy 17**, multiple mobiles beginning 576' from DER, 79' left of centerline, up to 18' AGL/3635' MSL. Vehicles on road beginning 503' from DER, 202' right of centerline, up to 15' AGL/3633' MSL. Vehicles on road beginning 508' from DER, 1' left of centerline, up to 15' AGL/3632' MSL. Post 8' from DER, 306' left of centerline, 3' AGL/3619' MSL. **Rwy 22**, vehicle on road 255' from DER, 485' left of centerline, 15' AGL/3633' MSL. **Rwy 35**, Post 5' from DER, 321' left of centerline, 6' AGL/3609' MSL. Tree 337' from DER, 463' left of centerline, 100' AGL/3709' MSL.

EMPORIA, KS

EMPORIA MUNI (EMP)

ORIG 07298 (FAA)

TAKE-OFF MINIMUMS: **Rwy 19**, 400-3 orstd. with a min. climb 225' per NM to 1800'.

NOTE: **Rwy 19**, tree and bush 66' from departure end of runway, 283' left of centerline, up to 40' AGL/1226' MSL. Tower 2.4 NM from departure end of runway, 3901' right of centerline, 300' AGL/1565' MSL.

EUREKA, KS

EUREKA MUNI (13K)

ORIG 84327 (FAA)

TAKE-OFF MINIMUMS: **Rwy 18**, 600-3 orstd. with a min. climb 345' per NM to 2000'.

FAIRBURY, NE

FAIRBURY MUNI (FBY)

ORIG 08213 (FAA)

TAKE-OFF MINIMUMS: **Rwys 11, 29**, NA-VFR/Turf Rwy.

NOTE: **Rwy 17**, multiple trees beginning 7' from departure end of runway, 463' right of centerline, up to 53' AGL/1507' MSL. Multiple poles beginning 587' from departure end of runway, 481' right of centerline, up to 38' AGL/1492' MSL. Light tower 573' from departure end of runway, 612' right of centerline, 46' AGL/1501' MSL. Satellite dish 531' from departure end of runway, 571' right of centerline, up to 38' AGL/1494' MSL. **Rwy 35**, multiple poles beginning 93' from departure end of runway, 319' left of centerline, up to 29' AGL/1508' MSL. Poles beginning 849' from departure end of runway, 415' right of centerline, up to 26' AGL/1503' MSL. Fence 79' from departure end of runway, 417' left of centerline, 4' AGL/1483' MSL.

FALLS CITY, NE

BRENNER FIELD (FNB)

AMDT 3 03247 (FAA)

TAKE-OFF MINIMUMS: **Rwy 32**, 300-1 orstd. with a min. climb of 266' per NM to 1200'.

DEPARTURE PROCEDURE: **Rwy 14**, climb via heading 144° to 1700 before turning right.

NOTE: **Rwy 14**, pole 256' from departure end of runway, 463' right of centerline, 25' AGL/990' MSL. Catenary 294' from departure end of runway, 401' right of centerline, 24' AGL/989' MSL. Tree 2889' from departure end of runway, 582' right of centerline, 55' AGL/1053' MSL. **Rwy 32**, tree 3360' from departure end of runway, 856' left of centerline, 100' AGL/1099' MSL.

FORT LEAVENWORTH, KS

SHERMAN AAF (FLV)

ORIG 05300 (FAA)

DEPARTURE PROCEDURE: **Rwy 15**, Climb via heading 155° to 1700 before turning southwest.

NOTE: **Rwy 15**, road 79' from departure end of runway, across departure course, up to 15' AGL/779' MSL. Building 400' from departure end of runway, 580' left of centerline, 28' AGL/788' MSL. pumphouse 444' from departure end of runway, 564' left of centerline, 23' AGL/783' MSL. boats 1063' from departure end of runway, across departure course, up to 45' AGL/800' MSL. trees 2165' from departure end of runway, across departure course, up to 75' AGL/838' MSL. **Rwy 33**, multiple trees and poles beginning 117' from departure end of runway on centerline, up to 100' AGL/879' MSL. levee 187' from departure end of runway, on centerline, 35' AGL/782' MSL.

FORT SCOTT, KS

FORT SCOTT MUNI (FSK)

ORIG 07242 (FAA)

NOTE: **Rwy 18**, multiple trees beginning 673' from departure end of runway, 275' left of centerline, up to 43' AGL/962' MSL. Vehicle on road 621' from departure end of runway, 25' left of centerline, 15' AGL/935' MSL. Tree 654' from departure end of runway, 214' right of centerline, 28' AGL/947' MSL. Fence 193' from departure end of runway, 370' right of centerline, 8' AGL/926' MSL. **Rwy 36**, multiple trees beginning 137' from departure end of runway, 305' left of centerline, up to 43' AGL/952' MSL. Fence 204' from departure end of runway, 284' left of centerline, 8' AGL/911' MSL. Multiple trees beginning 359' from departure end of runway, 399' right of centerline, up to 44' AGL/933' MSL.

31 MAY 2012 to 28 JUN 2012

31 MAY 2012 to 28 JUN 2012

12152



TAKE-OFF MINIMUMS AND (OBSTACLE) DEPARTURES PROCEDURES





TAKE-OFF MINIMUMS AND (OBSTACLE) DEPARTURE PROCEDURES



12152

FREMONT, NE

FREMONT MUNI (FET)

AMDT 5 08101 (FAA)

TAKE-OFF MINIMUMS: **Rwy 19**, 600-2½ with a min. climb of 370' per NM to 2000.DEPARTURE PROCEDURE: **Rwy 19**, Climb heading 185° to 1800 before proceeding on course.NOTE: **Rwy 1**, vehicle plus road beginning 213' from departure end of runway, 430' left and right of centerline, up to 15' AGL/1224' MSL. Tree 3771' from departure end of runway, 741' left of centerline, 100' AGL/1299' MSL. Tree 3349' from departure end of runway, 803' right of centerline, 100' AGL/1294' MSL. **Rwy 14**, tree 1248' from departure end of runway, 148' right of centerline, 100' AGL/1304' MSL. Vehicle plus road 513' from departure end of runway, 272' right of centerline, 15' AGL/1219' MSL. **Rwy 19**, vehicle plus road 531' from departure end of runway, 269' left of centerline, 15' AGL/1219' MSL. Tree 1222' from departure end of runway, 255' right of centerline, 100' AGL/1304' MSL. **Rwy 32**, multiple trees beginning 2053' from departure end of runway, 455' left of centerline, up to 84' AGL/1288' MSL. Multiple street lights beginning 1433' from departure end of runway, 465' right of centerline, up to 41' AGL/1246' MSL.**GARDEN CITY, KS**

GARDEN CITY RGNL (GCK)

ORIG 07186 (FAA)

NOTE: **Rwy 12**, multiple trees beginning 585' from DER, 431' left of centerline, up to 52' AGL/2926' MSL.**GARDNER, KS**

GARDNER MUNI (K34)

ORIG-A 10098 (FAA)

TAKE-OFF MINIMUMS: **Rwy 8**, multiple power lines 192' from DER, 430' left of centerline, up to 38' AGL/1069' MSL.NOTE: **Rwy 26**, multiple power lines 472' from DER, 502' right of centerline, up to 38' AGL/1072' MSL.**GOODLAND, KS**

RENNER FIELD/GOODLAND MUNI (GLD)

AMDT 5 11069 (FAA)

TAKE-OFF MINIMUMS: **Rwys 17, 35**, NA-Environmental.DEPARTURE PROCEDURE: **Rwy 23**, climb heading 234° to 4300 before turning left.NOTE: **Rwy 12**, vehicle on road 510' from DER, 544' left of centerline, 15' AGL/3665' MSL. **Rwy 23**, vehicle on road 683' from DER, 167' right of centerline, 15' AGL/3679' MSL. **Rwy 30**, trees beginning 153' from DER, 241' left of centerline, 15' AGL/3659' MSL. Silo 721' from DER, 567' left of centerline, 36' AGL/3675' MSL. Tree 1096' from DER, 641' right of centerline, 35' AGL/3674' MSL.**GORDON, NE**

GORDON MUNI (GRN)

AMDT 2A 11097 (FAA)

TAKE-OFF MINIMUMS: **Rwy 29**, 300-1.DEPARTURE PROCEDURE: **Rwys 22, 29**, climb runway heading to 4400 before turning.NOTE: **Rwy 22**, trees beginning 909' from DER, 24' right of centerline, up to 56' AGL/3594' MSL. Trees beginning 555' from DER, 109' left of centerline, up to 73' AGL/3622' MSL. Tree 1515' from DER, on centerline, up to 43' AGL/3593' MSL.**GOTHENBURG, NE**

QUINN FIELD (GTE)

AMDT 1 81106 (FAA)

TAKE-OFF MINIMUMS: **Rwy 32**, 300-1 or std. with a min. climb of 300' per NM to 2800.**GRAND ISLAND, NE**

CENTRAL NEBRASKA RGNL (GRI)

ORIG 07354 (FAA)

NOTE: **Rwy 13**, tree 1334' from departure end of runway, 730' left of centerline, 39' AGL/1881' MSL.**GRANT, NE**

GRANT MUNI (GGF)

ORIG 08213 (FAA)

NOTE: **Rwy 15**, post 7' from departure end of runway, 297' left of centerline, 4' AGL/3424' MSL. Post 5' from departure end of runway, 300' left of centerline, 5' AGL/3424' MSL. Road with vehicle 524' from departure end of runway, 525' left of centerline, 17' AGL/3442' MSL. Trees beginning 128' from departure end of runway, 304' left of centerline, up to 100' AGL/3442' MSL. **Rwy 33**, terrain 107' from departure end of runway, 352' left of centerline, 0' AGL/3426' MSL. Fence 226' from departure end of runway, 505' left of centerline, 8' AGL/3430' MSL. Terrain beginning 102' from departure end of runway, 199' right of centerline, up to 0' AGL/3429' MSL. Fence 3' from departure end of runway, 496' right of centerline, 4' AGL/3426' MSL.**GREAT BEND, KS**

GREAT BEND MUNI (GBD)

ORIG 08325 (FAA)

DEPARTURE PROCEDURE: **Rwy 35**, climb heading 352° to 3200 before turning eastbound.NOTE: **Rwy 35**, tree 1312' from departure end of runway, 826' left of centerline, 62' AGL/1946' MSL.

31 MAY 2012 to 28 JUN 2012

31 MAY 2012 to 28 JUN 2012

12152



TAKE-OFF MINIMUMS AND (OBSTACLE) DEPARTURES PROCEDURES





TAKE-OFF MINIMUMS AND (OBSTACLE) DEPARTURE PROCEDURES



12152

HARTINGTON, NE

HARTINGTON MUNI/BUD BECKER FIELD
(0B4)

ORIG 11237 (FAA)

DEPARTURE PROCEDURE: **Rwy 31**, Climb heading 315° to 1900 before turning right.

NOTE: **Rwy 13**, vehicles on road beginning 21' from DER, left and right of centerline, up to 15' AGL/1425' MSL. Terrain 137' from DER, 493' right of centerline 1424' MSL. Trees beginning 48' from DER, 269' left of centerline, up to 50' AGL/1415' MSL. **Rwy 31**, trees beginning 1064' from DER, 742' left of centerline, up to 50' AGL/1495' MSL. Antenna towers beginning 2581' from DER, 346' left of centerline, 90' AGL/1489' MSL. Utility poles and signs beginning 3029' from DER, 929' left of centerline, 85' AGL/1484' MSL. Building peaks beginning 3173' from DER, 35' left of centerline, 90' AGL/1513' MSL. Light pole 3776' from DER, 1117' left of centerline, 85' AGL/1512' MSL. Utility pole 3518' from DER, 1144' left of centerline, 98' AGL/1513' MSL. Smokestack 3791' from DER. 1042' left of centerline, 80' AGL/1489' MSL. Trees and building peaks beginning 3257' from DER, 250' right of centerline, up to 100' AGL/1475' MSL.

HARVARD, NE

HARVARD STATE (08K)

ORIG 11013 (FAA)

TAKE-OFF MINIMUMS: **Rwys 4, 32**, NA-Environmental. **Rwy 35**, std. w/ min. climb of 232' per NM to 3500 or 1100-3 for climb in visual conditions.

DEPARTURE PROCEDURE: **Rwy 35**, For climb in visual conditions: cross Harvard State Airport at or above 2800 before proceeding on course.

NOTE: **Rwy 35**, terrain 39' from DER, 451' left of centerline, 1818' MSL.

HASTINGS, NE

HASTINGS MUNI (HSI)

AMDT 3 09071 (FAA)

DEPARTURE PROCEDURE: **Rwy 4**, climb heading 090° to 3000 before proceeding on course. **Rwy 32**, climb heading 323° to 2500 before turning right.

NOTE: **Rwy 14**, vehicle on road 202' from DER, 386' left of centerline, 15' AGL/1952' MSL. Tree 625' from DER, 498' right of centerline, 17' AGL/1961' MSL. Lightpole 620' from DER, 657' right of centerline, 35' AGL/1977' MSL. Multiple trees beginning 835' from DER, 558' left of centerline, up to 61' AGL/2010' MSL.

HAYS, KS

HAYS RGNL (HYS)

AMDT 2 92180 (FAA)

DEPARTURE PROCEDURE: **Rwy 34**, westbound departures (160°CW 340°) climb runway heading 3100 before proceeding on course.

HEBRON, NE

HEBRON MUNI (HJH)

ORIG 85115 (FAA)

TAKE-OFF MINIMUMS: **Rwys 3, 12, 21, 30**, 300-1.

DEPARTURE PROCEDURE: **All Rwys**: climb straight ahead to 1700 before proceeding on course.

HERINGTON, KS

HERINGTON RGNL (HRU)

ORIG 11013 (FAA)

TAKE-OFF MINIMUMS: **Rwy 17**, 400 - 2½ or std. w/ min. climb of 215' per NM to 2000, or alternatively, with standard takeoff minimums and a normal 200' per NM climb gradient. Takeoff must occur no later than 1800' prior to DER.

NOTE: **Rwy 17**, tower 2 NM from DER, 3564' right of centerline, 318' AGL/1808' MSL.

HILL CITY, KS

HILL CITY MUNI (HLC)

ORIG 06047 (FAA)

TAKE-OFF MINIMUMS: **Rwy 17**, 200-1 or std. with a min. climb of 380' to 2500.

DEPARTURE PROCEDURE: **Rwy 35**, climb via heading 352° to 3100 before turning left.

NOTE: **Rwy 17**, tower 3423' from departure end of runway, 1085' left of centerline, 145' AGL/2345' MSL. Tree 633' from departure end of runway, 449' right of centerline, 52' AGL/221' MSL. Multiple trees beginning 694' from departure end of runway, 189' left of centerline, 40' AGL/221' MSL. Multiple trees beginning 696' from departure end of runway 289' left of centerline, 40' AGL/2213' MSL. Multiple trees 790' from departure end of runway, 441' right of centerline, 48' AGL/2214' MSL. Tree 878' from departure end of runway, 122' left of centerline, 40' AGL/2210' MSL. Tree 899' from departure end of runway, 220' right of centerline, 54' AGL/2212' MSL. Multiple trees 893' from departure end of runway, 193' left of centerline, 70' AGL/2211' MSL. Tree 945' from departure end of runway, 229' right of centerline, 65' AGL/2213' MSL. **Rwy 35**, tree 1529' from departure end of runway, 94' left of centerline, 36' AGL/2279' MSL. Power pole 2433' from departure end of runway, 1046' right of centerline, 48' AGL/2308' MSL. Power pole 2447' from departure end of runway, 785' right of centerline, 41' AGL/2311' MSL.

HOLDREGE, NE

BREWSTER FIELD (HDE)

AMDT 2 98113 (FAA)

TAKE-OFF MINIMUMS: **Rwys 11, 29**, NA.

DEPARTURE PROCEDURE: **Rwy 18**, climb runway heading to 3800 before turning right. **Rwy 36**, climb runway heading to 3600 before turning left.

HUGOTON, KS

HUGOTON MUNI (HQG)

AMDT 1 07186 (FAA)

TAKE-OFF MINIMUMS: **Rwy 31**, NA-obstacles.

DEPARTURE PROCEDURE: **Rwy 2**, climb heading 016° to 3800 before turning right.

NOTE: **Rwy 2**, multiple poles, hangars, and vehicle on road beginning 25' from departure end of runway, 334' left of centerline, up to 43' AGL/3167' MSL. Pole and fence beginning 19' from departure end of runway, 304' right of centerline, up to 33' AGL/3157' MSL. **Rwy 20**, vehicle on road 1' from departure end of runway, 371' right of centerline, 15' AGL/3153' MSL. Vehicle on road 203' from departure end of runway, 369' left of centerline, 15' AGL/3148' MSL.

31 MAY 2012 to 28 JUN 2012

31 MAY 2012 to 28 JUN 2012

12152



TAKE-OFF MINIMUMS AND (OBSTACLE) DEPARTURES PROCEDURES





TAKE-OFF MINIMUMS AND (OBSTACLE) DEPARTURE PROCEDURES



12152

HUTCHINSON, KS

HUTCHINSON MUNI (HUT)

AMDT 5 11013 (FAA)

DEPARTURE PROCEDURE: **Rwy 4**, climb heading 036° to 3100 before proceeding east. **Rwy 13**, climb heading 132° to 3100 before proceeding east. **Rwy 17**, climb heading 171° to 2700 before proceeding east. **Rwy 22**, climb heading 216° to 2400 before proceeding east. **Rwy 31**, climb heading 312° to 2400 before proceeding east. **Rwy 35**, climb heading 351° to 2400 before proceeding east.

NOTE: **Rwy 4**, vehicle on road, 53' from DER, 62' right of centerline, up to 15' AGL/1559' MSL. Trees beginning 50' from DER, 418' left of centerline, up to 100' AGL/1636' MSL. Trees beginning 11' from DER, 231' right of centerline, up to 100' AGL/1693' MSL. **Rwy 13**, trees beginning 5' from DER, 225' left of centerline, up to 100' AGL/1564' MSL. Tower 1484' from DER, 778' left of centerline, 70' AGL/1584' MSL. Vehicle on road, 1' from DER, 203' right of centerline, up to 15' AGL/1529' MSL. Antennas and trees beginning 650' from DER, 312' right of centerline, up to 100' AGL/1561' MSL. **Rwy 17**, vehicles on road, 267' from DER, left and right of centerline, up to 15' AGL/1532' MSL. Light on fence 209' from DER, 537' right of centerline, 11' AGL/1526' MSL. **Rwy 22**, light on tower, 3505' from DER, 1229' left of centerline, 131' AGL/1646' MSL. Poles, trees, lights, and buildings beginning 95' from DER, 281' left of centerline, up to 100' AGL/1567' MSL. **Rwy 31**, vehicles on road, 39' from DER, 111' left of centerline, up to 15' AGL/1539' MSL. Trees beginning 1439' from DER, 689' left of centerline, up to 100' AGL/1572' MSL. Tree 2669' from DER, 1097' right of centerline, up to 100' AGL/1599' MSL. **Rwy 35**, tree 112' from DER, 486' left of centerline, up to 100' AGL/1550' MSL. Multiple trees beginning 76' from DER, 155' right of centerline, up to 100' AGL/1564' MSL.

IMPERIAL, NE

IMPERIAL MUNI (IML)

AMDT 2 96228 (FAA)

TAKE-OFF MINIMUMS: **Rwy 21**, 300-1 or std. w a min. climb of 260' per NM to 3700.

INDEPENDENCE, KS

INDEPENDENCE MUNI (IDP)

ORIG 08325 (FAA)

NOTE: **Rwy 4**, trees beginning 2911' from departure end of runway, 1236' left of centerline, up to 100' AGL/929' MSL. Tree 1878' from departure end of runway, 236' right of centerline, 52' AGL/871' MSL. **Rwy 17**, trees beginning 1402' from departure end of runway, 696' left of centerline, up to 31' AGL/860' MSL. **Rwy 35**, obstruction light on DME 1002' from departure end of runway, 256' right of centerline, 20' AGL/849' MSL. Trees beginning 2515' from departure end of runway, 994' right of centerline, up to 100' AGL/929' MSL.

IOLA, KS

ALLEN COUNTY (K88)

ORIG 09071 (FAA)

NOTE: **Rwy 1**, trees 1280' from DER, 485' right of centerline, 100' AGL/1109' MSL. **Rwy 19**, vehicle on road 28' from DER, 501' right of centerline, 15' AGL/1024' MSL. Terrain beginning 69' from DER, 229' right of centerline, up to 1014' MSL. Trees 2240' from DER, 1068' right of centerline, 100' AGL/1109' MSL. Trees 2381' from DER, 621' left of centerline, 100' AGL/1089' MSL.

JOHNSON, KS

STANTON COUNTY MUNI (2K3)

ORIG 10322 (FAA)

NOTE: **Rwy 17**, hangar 517' from DER, 539' right of centerline, 18' AGL/3342' MSL. **Rwy 26**, hangar 373' from DER, 315' left of centerline, 18' AGL/3342' MSL. Vehicle on road beginning 529' from DER, on centerline, 15' AGL/3339' MSL. Trees beginning 704' from DER, 66' left of centerline, up to 40' AGL/3364' MSL.

JUNCTION CITY, KS

FREEMAN FIELD (JJC)

AMDT 2 10042 (FAA)

TAKE-OFF MINIMUMS: **Rwys 5, 23**, NA-Environmental. **Rwy 18**, 500-2½ or std. w a min. climb of 420' per NM to 1700. **Rwy 36**, 300-2 or std. w/min climb of 234' per NM to 1500.

DEPARTURE PROCEDURE: **Rwy 18**, climb heading 189° to 2200 before turning right. **Rwy 36**, climb heading 009° to 2000 before proceeding on course.

NOTE: **Rwy 18**, numerous towers and poles beginning 909' from DER, 389' left of centerline, up to 135' AGL/1432' MSL. Tank 1.1 NM from DER, 1895' left of centerline, 148' AGL/1410' MSL. Antenna 1.9 NM from DER, 478' left of centerline, 75' AGL/1426' MSL. Numerous towers and trees beginning 28' from DER, 437' right of centerline, up to 320' AGL/1540' MSL. **Rwy 36**, tree 540' from DER, 6' left of centerline, 100' AGL/1164' MSL. Trees beginning 2531' from DER, 397' right of centerline, up to 100' AGL/1164' MSL. Building 54' from DER, 435' left of centerline, 30' AGL/1165' MSL.

KEARNEY, NE

KEARNEY RGNL (EAR)

AMDT 1 12124 (FAA)

DEPARTURE PROCEDURE: **Rwy 13**, climb heading 132° to 3600 before turning left.

NOTE: **Rwy 13**, trees 1631' from DER, 745' right of centerline, 82' AGL/2189' MSL. Trees 2769' from DER, 879' left of centerline, 109' AGL/2199' MSL.

31 MAY 2012 to 28 JUN 2012

31 MAY 2012 to 28 JUN 2012

12152



TAKE-OFF MINIMUMS AND (OBSTACLE) DEPARTURE PROCEDURES





TAKE-OFF MINIMUMS AND (OBSTACLE) DEPARTURE PROCEDURES



12152

KIMBALL, NE

KIMBALL MUNI/ROBERT E. ARRAJ FIELD
(IBM)
ORIG 07018 (FAA)

NOTE: **Rwy 10**, fence 218' from departure end of runway, 273' right of centerline, 4' AGL/4905' MSL. Wind cone 256' from departure end of runway, 222' left of centerline, 14' AGL/4914' MSL. Multiple stop signs beginning 830' from departure end of runway, 555' left of centerline, up to 17' AGL/4926' MSL. **Rwy 28**, terrain beginning 75' from departure end of runway, 262' right of centerline, up to 4939' MSL. Terrain beginning 141' from departure end of runway, 435' left of centerline, up to 4932' MSL.

KINGMAN, KS

KINGMAN AIRPORT-CLYDE CESSNA FIELD
(9K8)
ORIG 11125 (FAA)

NOTE: **Rwy 11**, trees beginning 139' from DER, 522' right of centerline, up to 100' AGL/1689' MSL. Trees beginning 1525' from DER, 819' left of centerline, up to 100' AGL/1709' MSL. **Rwy 18**, poles beginning 125' from DER, 418' left of centerline, up to 102' AGL/1621' MSL. Trees beginning 36' from DER, left and right of centerline, up to 132' AGL/1661' MSL. **Rwy 29**, vehicles on road 1054' from DER, 615' left of centerline, up to 15' AGL/1634' MSL. Trees beginning 3430' from DER, 257' left of centerline, up to 100' AGL/1729' MSL. **Rwy 36**, tree 119' from DER, 315' left of centerline, 50' AGL/1604' MSL. Trees beginning 580' from DER, left and right of centerline, up to 100' AGL/1704' MSL.

LARNED, KS

LARNED-PAWNEE COUNTY (LQR)
AMDT 3 11013 (FAA)

TAKE-OFF MINIMUMS: **Rwys 4, 12, 22, 30**, NA-Environmental.

NOTE: **Rwy 17**, runway light 9' from DER, 50' left of centerline, 1' AGL/2009' MSL. Light 100' from DER, 486' right of centerline, 37' AGL/2047' MSL. Tank 117' from DER, 313' right of centerline, 17' AGL/2027' MSL. Vehicles on road 493' from DER, crossing right to left, 15' AGL/2029' MSL. Trees 536' from DER, 54' AGL/2068' MSL. **Rwy 35**, runway light 10' from DER, 13' right of centerline, 2' AGL/2008' MSL. Vehicles on road 548' from DER, crossing right to left, 15' AGL/2021' MSL. Power poles 573' from DER, 614' left of centerline, 38' AGL/2031' MSL. Power poles beginning 577' from DER, 364' right of centerline, up to 38' AGL/2039' MSL. Trees beginning 597' from DER, 204' right of centerline. Up to 54' AGL/2050' MSL.

LAWRENCE, KS

LAWRENCE MUNI (LWC)
AMDT 4 03247 (FAA)

TAKE-OFF MINIMUMS: **Rwy 1**, 400-1½' or std. with a min. climb of 387' per NM to 1300. **Rwy 33**, 300-1 or std. with a min. climb of 327' per NM to 1100.

DEPARTURE PROCEDURE: **Rwy 15**, south and west departures (140°CW360°), climb via heading 130° to 2400 before turning right on course. **Rwy 19**, climb via heading 180° to 2400 before turning on course.

NOTE: **Rwy 1**, bush 297' from departure end of runway, 192' right of centerline, 9' AGL/842' MSL, tree 2864' from departure end of runway, 759' right of centerline, 90' AGL/969' MSL, tree 4151' from departure end of runway, 1466' left of centerline, 79' AGL/958' MSL, tree 7024' from departure end of runway, 2180' right of centerline, 45' AGL/1104' MSL, tree 7285' from departure end of runway, 1781' right of centerline, 100' AGL/1179' MSL, tree 7406' from departure end of runway, 349' right of centerline, 49' AGL/1088' MSL, tree 7980' from departure end of runway, 2613' right of centerline, 46' AGL/1105' MSL, tree 10,211' from departure end of runway, 2539' left of centerline, 49' AGL/1108' MSL, tree 11,544' from departure end of runway, 1866' left of centerline, 70' AGL/1129' MSL. **Rwy 15**, tree 543' from departure end of runway, 561' left of centerline, 28' AGL/857' MSL, tree 1361' from departure end of runway, 714' right of centerline, 50' AGL/879' MSL. **Rwy 19**, tree 1797' from departure end of runway, 558' right of centerline, 79' AGL/918' MSL, tree 1896' from departure end of runway, 317' right of centerline, 71' AGL/910' MSL. **Rwy 33**, tree 1323' from departure end of runway, 623' right of centerline, 59' AGL/898' MSL, tree 1622' from departure end of runway, 353' right of centerline, 48' AGL/887' MSL, tree 1768' from departure end of runway, 201' right of centerline, 49' AGL/888' MSL, tree 1945' from departure end of runway, 17' left of centerline, 66' AGL/905' MSL, tree 4357' from departure end of runway, 1563' right of centerline, 100' AGL/1009' MSL.

LEXINGTON, NE

JIM KELLY FIELD (LXN)
AMDT 2 07130 (FAA)

TAKE-OFF MINIMUMS: **Rwy 19**, std. w/ min. climb of 291' per NM to 4000 or 1200-3 for climb in visual conditions.

DEPARTURE PROCEDURE: **Rwy 14**, climb heading 136° to 3500' before turning right. **Rwy 19**, for climb in visual conditions: cross Jim Kelly Field Airport at or above 3500' MSL before proceeding on course.

NOTE: **Rwy 1**, terrain 56' from departure end of runway, 470' left of centerline, 2409' MSL. **Rwy 14**, multiple trees beginning 865' from departure end of runway, 242' left of centerline, up to 59' AGL/2459' MSL. Multiple trees and railroad signals beginning 896' from departure end of runway, 406' right of centerline, up to 55' AGL/2457' MSL. **Rwy 32**, fence 97' from departure end of runway, 497' right of centerline, 3' AGL/2418' MSL. Fence 72' from departure end of runway, 498' left of centerline, 10' AGL/2415' MSL.

31 MAY 2012 to 28 JUN 2012

31 MAY 2012 to 28 JUN 2012

12152



TAKE-OFF MINIMUMS AND (OBSTACLE) DEPARTURES PROCEDURES





TAKE-OFF MINIMUMS AND (OBSTACLE) DEPARTURE PROCEDURES



12152

LIBERAL, KS

LIBERAL MID-AMERICA RGNL (LBL)
AMDT 5 07242 (FAA)

NOTE: **Rwy 4**, obstruction light on lighted WSK 390' from departure end of runway, 350' left of centerline, 21' AGL/2896' MSL. Tree 1299' from departure end of runway, 785' right of centerline, 44' AGL/2924' MSL. **Rwy 35**, multiple trees beginning 1090' from departure end of runway, 317' right of centerline, up to 39' AGL/2920' MSL.

LINCOLN, NE

LINCOLN (LNK)
ORIG-A 10182 (FAA)

NOTE: **Rwy 14**, windsock 262' from DER, 369' left of centerline, 7' AGL/1187' MSL.

Rwy 17, light poles beginning 520' from DER, 505' right of centerline, up to 36' AGL/1198' MSL. **Rwy 18**, rod on obstruction light tower 3858' from DER, 687' left of centerline, 80' AGL/1280' MSL. **Rwy 35**, warehouse 4463' from DER, 1350' left of centerline, 50' AGL/1369' MSL.

MANHATTAN, KS

MANHATTAN RGNL (MHK)
AMDT 7A 12152 (FAA)

TAKE-OFF MINIMUMS: **Rwy 3**, 400-2¼ or std. w/ min. climb of 360' per NM to 1600. **Rwy 13**, 300-1½ or std. w/ min. climb of 219' per NM to 1300. **Rwy 31**, 400-2¼ or std. w/ min. climb of 277' per NM to 1500.

DEPARTURE PROCEDURE: **All runways**, westbound departures heading 210° through 360° NA. **Rwy 3**, climb heading 036° to 1700 before turning right. **Rwy 31**, departure NA when R-3602B active. NOTE: R-3602B restricted area immediately west of airport. NOTE: **Rwy 3**, numerous trees beginning 20' from DER, right and left of centerline, up to 100' AGL/1395' MSL. **Rwy 13**, numerous trees beginning 1304' from DER, right and left of centerline, up to 100' AGL/1229' MSL. Light pole, flood light, building, and elevator beginning 33' from DER, 439' left of centerline, up to 50' AGL/1086' MSL. Railroad 905' from DER, 614' right of centerline, 23' AGL/1068' MSL. **Rwy 21**, numerous trees beginning 2350' from DER, right and left of centerline, up to 100' AGL/1169' MSL. Pole 4928' from DER, 1006' right of centerline, 41' AGL/1189' MSL. Pole 3593' from DER, 462' right of centerline, 41' AGL/1189' MSL. Pole 3993' from DER, 461' right of centerline, 41' AGL/1158' MSL. **Rwy 31**, numerous trees beginning 164' from DER, right and left of centerline, up to 100' AGL/1358' MSL. Utility pole 1290' from DER, 435' right of centerline, 25' AGL/1124' MSL.

MARSHALL AAF (KFRI)

FORT RILEY, KS 07186

Rwy 22, 400-2¾
* Or standard with minimum climb of 273'/NM to 1500.
DEPARTURE PROCEDURE: **Rwy 22**: Climb on heading 224° to 2200 before proceeding on course.
TAKE-OFF OBSTACLES: **Rwy 4**: Ridgeline 1212' MSL, 2721' from DER, 1104' right of centerline. Ridgeline 1198' MSL, 4791' from DER, 151' right of centerline.
Rwy 22: Antenna 1371' MSL, 8919' from DER, 1292' left of centerline. Antenna 1432' MSL, 14,495' from DER, 2287' left of centerline.

MARYSVILLE, KS

MARYSVILLE MUNI (MYZ)
AMDT 1 11125 (FAA)

TAKE-OFF MINIMUMS: **Rwy 34**, 500-1.
NOTE: **Rwy 16**, trees beginning 68' from DER, 480' left of centerline, up to 28' AGL/1287' MSL. Pole 200' from DER, 501' left of centerline, 30' AGL/1285' MSL. Trees beginning 506' from DER, 540' left of centerline, up to 88' AGL/1327' MSL. Trees beginning 1306' from DER, 761' right of centerline, up to 100' AGL/1359' MSL. Trees beginning 4610' from DER, 1170' left of centerline, up to 100' AGL/1409' MSL. **Rwy 34**, trees 1539' from DER, 902' left of centerline, 69' AGL/1327' MSL. Tower 4940' from DER, 1289' right of centerline, 499' AGL/1759' MSL.

MC CONNELL AFB (KIAB)

WICHITA, KS 09043
TAKE-OFF OBSTACLES: **Rwy 1L**, KC135 tail 42' AGL/1409' MSL, 24' from DER, 363' left of centerline. **Rwy 1R**, KC135 tail 42' AGL/1406' MSL, 1048' from DER, 678' right of centerline. KC135 tail 42' AGL/1406' MSL, 139' from DER, 578' right of centerline. KC135 tail 42' AGL/1406' MSL, 325' from DER, 577' right of centerline. KC135 tail 42' AGL/1406' MSL, 514' from DER, 577' right of centerline. KC135 tail 42' AGL/1406' MSL, 729' from DER, 678' right of centerline. KC135 tail 42' AGL/1406' MSL, 889' from DER, 678' right of centerline. KC135 tail 42' AGL/1400' MSL, 43' from DER, 306' right of centerline.

MC COOK, NE

MC COOK BEN NELSON RGNL (MCK)
ORIG 09351(FAA)
TAKE-OFF MINIMUMS: **Rwys 17, 35**, NA-Environmental.
NOTE: **Rwy 4**, tree 275' from departure end of runway, 233' left of centerline, 27' AGL/2566' MSL. **Rwy 12**, multiple trees beginning 71' from departure end of runway, 147' right of centerline, up to 40' AGL/2559' MSL. Tree 240' from departure end of runway, 142' left of centerline, 40' AGL/2549' MSL. **Rwy 22**, pole 843' from departure end of runway, 95' right of centerline, 28' AGL/2587' MSL.

MC PHERSON, KS

MC PHERSON (MPR)
AMDT 2 07298 (FAA)
TAKE-OFF MINIMUMS: **Rwy 8, 26**, NA-Environmental.
NOTE: **Rwy 18**, trees beginning 2646' from departure end of runway, 1047' left to 1047' right of centerline, up to 100' AGL/1594' MSL. **Rwy 36**, bush 32' from departure end of runway, 262' right of centerline, 8' AGL/1495' MSL. Trees beginning 2646' from departure end of runway, 1047' left to 1047' right of centerline, up to 100' AGL/1594' MSL.

MEADE, KS

MEADE MUNI (MEJ)
ORIG 11013 (FAA)
TAKE-OFF MINIMUMS: **Rwys 8, 26**, NA-Environmental.
NOTE: **Rwy 17**, vehicles on roadway at DER, 290' right of centerline, up to 15' AGL/2524' MSL. Trees beginning 768' from DER, left and right of centerline, up to 45' AGL/2554' MSL. **Rwy 35**, hanger 446' from DER, 612' left of centerline, up to 20' AGL/2549' MSL. Vehicles on roadway 641' from DER, left and right of centerline, up to 17' AGL/2546' MSL. Trees beginning 2129' from DER, 530' right of centerline, up to 45' AGL/2574' MSL.

31 MAY 2012 to 28 JUN 2012

31 MAY 2012 to 28 JUN 2012

12152



TAKE-OFF MINIMUMS AND (OBSTACLE) DEPARTURES PROCEDURES





TAKE-OFF MINIMUMS AND (OBSTACLE) DEPARTURE PROCEDURES



12152

MINDEN, NE

PIONEER VILLAGE FIELD (0V3)
AMDT 2 10266 (FAA)

TAKE-OFF MINIMUMS: **Rwys 5, 23**, NA-Turf.

DEPARTURE PROCEDURE: **Rwy 34**, climb heading 339° to 3000 before turning right.

NOTE: **Rwy 16**, trees, guard posts, and street lights beginning 32' from DER, 156' right of centerline, up to 75' AGL/2223' MSL. Trees beginning 193' from DER, 167' left of centerline, up to 67' AGL/2204' MSL. Buildings beginning 1656' from DER, 156' right of centerline, up to 70' AGL/2225' MSL. Power poles beginning 528' from DER, 393' right of centerline, up to 37' AGL/2191' MSL. **Rwy 34**, trees beginning 192' from DER, 156' left of centerline, up to 100' AGL/2269' MSL.

MOUNDRIDGE, KS

MOUNDRIDGE MUNI (47K)
ORIG 11349 (FAA)

NOTE: **Rwy 17**, buildings 224' from DER, 125' right and 280' left of centerline, up to 25' AGL/1519' MSL. Vehicles on roadway across centerline 508' from DER, up to 15' AGL/1504' MSL. Power poles beginning 744' from DER, 638' left of centerline, up to 35' AGL/1524' MSL. Trees beginning 1123' from DER, 693' right of centerline, up to 100' AGL/1589' MSL. **Rwy 35**, trees beginning 4035' from DER, 401' right of centerline, up to 100' AGL/1599' MSL.

NEBRASKA CITY, NE

NEBRASKA CITY MUNI (AFK)
ORIG 08157 (FAA)

TAKE-OFF MINIMUMS: **Rwys 5, 23**, NA-Environmental.

NELIGH, NE

ANTELOPE COUNTY (4V9)
ORIG 09351 (FAA)

TAKE-OFF MINIMUMS: **Rwy 1**, 400-1¼ or std. w/ min. climb of 315' per NM to 2200.

DEPARTURE PROCEDURE: **Rwy 19**, climb heading 188° to 2500 before proceeding on course.

NOTE: **Rwy 1**, multiple trees beginning 283' from DER, 7' right of centerline, up to 89' AGL/1810' MSL. Multiple towers beginning 1.2 NM from DER, 194' left of centerline, up to 135' AGL/2071' MSL. Multiple antennas beginning 1.4 NM from DER, 434' left of centerline, up to 71' AGL/2022' MSL. Multiple structures beginning 1720' from DER, 2' left of centerline, up to 59' AGL/1780' MSL. Building 1.4 NM from DER, 477' left of centerline, 42' AGL/1991' MSL. **Rwy 13**, tree 30' from DER, 468' left of centerline, 60' AGL/1756' MSL.

Rwy 19, fence beginning 80' from DER, 450' right of centerline, up to 4' AGL/1785' MSL. Ground 76' from DER, 334' right of centerline, 1783' MSL. Ground 180' from DER, 342' right of centerline, 1783' MSL. **Rwy 31**, multiple trees beginning 586' from DER, 603' left of centerline, up to 60' AGL/1819' MSL. Vehicles on road beginning 168' from DER, 523' left of centerline, up to 17' AGL/1766' MSL.

NEWTON, KS

NEWTON-CITY-COUNTY (EWK)
ORIG 11321 (FAA)

NOTE: **Rwy 8**, silo 503' from DER, 552' right of centerline, 61' AGL/1591' MSL. Elevator 535' from DER, 523' right of centerline, 61' AGL/1591' MSL. Pole 837' from DER, 364' left of centerline, 42' AGL/1568' MSL. Pole 844' from DER, 209' right of centerline, 42' AGL/1568' MSL. **Rwy 26**, pole 737' from DER, 229' right of centerline, 37' AGL/1560' MSL. Pole 723' from DER, 407' left of centerline, 27' AGL/1553' MSL. **Rwy 35**, tree 586' from DER, 577' left of centerline, 22' AGL/1545' MSL. Sign at DER, 410' right of centerline, 5' AGL/1533' MSL. Rising terrain, 40' from DER, 399' right of centerline, up to 1532' MSL.

NORFOLK, NE

NORFOLK RGNL/KARL STEFAN MEMORIAL
FLD (OFK)
ORIG 09351 (FAA)

NOTE: **Rwy 1**, terrain with trees beginning 50' from DER, left and right of centerline, up to 100' AGL/1615' MSL.

Rwy 14, terrain with trees beginning 55' from DER, left and right of centerline, up to 75' AGL/1640' MSL. Vehicle on road 555' from DER, 619' left of centerline, 15' AGL/1586' MSL. Satellite dish 825' from DER, 359' left of centerline, 37' AGL/1599' MSL. Electrical equipment 22' from DER, 499' left of centerline, 5' AGL/1565' MSL.

Rwy 19, terrain beginning 116' from DER, 486' left of centerline, up to 1576' MSL. Fence 905' from DER, 666' left of centerline, 6' AGL/1596' MSL. Trees beginning 3024' from DER, 486' left and right of centerline, up to 100' AGL/1698' MSL. **Rwy 32**, terrain 180' from DER, 162' left of centerline, 1549' MSL. Tree 778' from DER, 672' left of centerline, 100' AGL/1649' MSL. Railroad tracks 959' from DER, 363' left of centerline, 23' AGL/1568' MSL. Tree 2475' from DER, 60' left of centerline, 81' AGL/1611' MSL.

NORTH PLATTE, NE

NORTH PLATTE RGNL AIRPORT LEE BIRD
FIELD (LBF)
AMDT 4 90263 (FAA)

DEPARTURE PROCEDURE: **Rwy 30**, climb runway heading to 4000 before turning right. **Rwy 35**, climb runway heading to 4000 before turning left.

NORTON, KS

NORTON MUNI (NRN)
AMDT 1 08045 (FAA)

TAKE-OFF MINIMUMS: **Rwys 8, 26**, NA-Environmental. **Rwy 16**, 400-3.

NOTES: **Rwy 16**, Tower 2241' from departure end of runway, 642' left of centerline, 198' AGL/2528' MSL. Tower 2.42 NM from departure end of runway, 3467' right of centerline, 358' AGL/2758' MSL. **Rwy 34**, Tree 630' from departure end of runway, 203' left of centerline, 100' AGL/2489' MSL.

O'NEILL, NE

THE O'NEILL MUNI-JOHN L. BAKER FIELD
(ONL)
ORIG 88266 (FAA)

DEPARTURE PROCEDURE: **Rwys 4, 13, 22**, climb runway heading to 2600 before turning.

31 MAY 2012 to 28 JUN 2012

31 MAY 2012 to 28 JUN 2012

12152



TAKE-OFF MINIMUMS AND (OBSTACLE) DEPARTURES PROCEDURES





TAKE-OFF MINIMUMS AND (OBSTACLE) DEPARTURE PROCEDURES



12152

OAKLEY, KS

OAKLEY MUNI (OEL)
ORIG 06215 (FAA)

NOTE: **Rwy 16**, bush 145' from departure end of runway, 496' left of centerline, 14' AGL/3034' MSL. Road 208' from departure end of runway, 368' right of centerline, 15' AGL/3031' MSL. **Rwy 34**, tree 855' from departure end of runway, 416' right of centerline, 50' AGL/3099' MSL.

OBERLIN, KS

OBERLIN MUNI (OIN)
AMDT1 11013 (FAA)

TAKE-OFF MINIMUMS: **Rwys 3, 12, 21, 30**, NA-
Environmental.

DEPARTURE PROCEDURE: **Rwy17**, climb heading 171° to 3100' before turning East.

OFFUTT AFB (KOFF),

OMAHA, NE ORIG, 10126

TAKE-OFF OBSTACLES: **Rwy 12**, Fence Post, 3' AGL/974' MSL, 153' from DER, on centerline. Antenna, 7' AGL/968' MSL, 276' from DER, on centerline. Vehicle, 15' AGL/983' MSL, 170' from DER, 158' left of centerline. Road, 15' AGL/985' MSL, 191' from DER, 1' left of centerline. Railroad, up to 23' AGL/995' MSL, beginning 386' from DER, 55' left of centerline. Multiple trees, up to 110' AGL/1,076' MSL, beginning 3,185' from DER, 68' left of centerline. Terrain, 974' MSL, 0' from DER, 353' right of centerline. Multiple trees, up to 110' AGL/1,088' MSL, beginning 1,150' from DER, 5' right of centerline. **Rwy 30**, Antenna, 7' AGL/1,053' MSL, 201' from DER, on centerline. Multiple trees, up to 110' AGL/1,090' MSL, beginning 296' from DER, 6' left of centerline. Multiple trees, up to 110' AGL/1,098' MSL, beginning 1,267' from DER, 552' right of centerline.

OGALLALA, NE

SEARLE FIELD (OGA)
AMDT 4 11125 (FAA)

TAKE-OFF MINIMUMS: **Rwy 31**, std. w/min. climb of 318' per NM to 4400 or 1300-3 for climb in visual conditions. DEPARTURE PROCEDURE: **Rwy 8**, climb heading 079° to 3900 before turning left. **Rwy 26**, climb heading 259° to 4000 before turning right. **Rwy 31**, for climb in visual conditions: cross Searle Field at or above 4400' MSL before proceeding on course.

NOTE: **Rwy 8**, rising terrain 35' from DER, left and right of centerline, up to 3261' MSL. Light on windsock 235' from DER, 417' left of centerline, 16' AGL/3265' MSL. Vehicles on road beginning 294' from DER, 555' right of centerline, up to 15' AGL/3257' MSL. Train on tracks beginning 469' from DER, 615' right of centerline, up to 23' AGL/3264' MSL. Wood pole 566' from DER, 520' right of centerline, 24' AGL/3262' MSL. Wood pole 680' from DER, 461' right of centerline, 24' AGL/3263' MSL. **Rwy 13**, trees beginning 480' from DER, 247' right of centerline, up to 30' AGL/3269' MSL. Poles beginning 627' from DER, 168' right of centerline, up to 26' AGL/3265' MSL. Tree 742' from DER, 352' right of centerline, 51' AGL/3290' MSL. **Rwy 26**, fence 76' from DER, 252' right of centerline, 4' AGL/3265' MSL. Terrain 143' from DER, 499' right of centerline, up to 3269' MSL. **Rwy 31**, tree 383' from DER, 290' left of centerline, up to 100' AGL/3379' MSL. Trees beginning 877' from DER, 314' left of centerline, up to 100' AGL/3399' MSL. Rising terrain beginning 379' from DER, left and right of centerline, up to 3586' MSL.

OLATHE, KS

JOHNSON COUNTY EXECUTIVE (OJC)
ORIG 05300 (FAA)

NOTE: **Rwy 18**, multiple trees 622' from departure end of runway, 192' right of centerline, up to 73' AGL/1084' MSL. **Rwy 36**, antenna 335' from departure end of runway, 263' left of centerline, 20' AGL/1110' MSL, tree 1008' from departure end of runway, 612' right of centerline, 57' AGL/1130' MSL, tree 1544' from departure end of runway, 810' left of centerline, 71' AGL/1144' MSL.

NEW CENTURY AIRCENTER (IXD)

ORIG 05300 (FAA)

NOTE: **Rwy 4**, fence 204' from departure end of runway, 256' right of centerline, 10' AGL/1096' MSL, obstruction light 296' from departure end of runway, 163' right of centerline, 19' AGL/1098' MSL, obstruction light 492' from departure end of runway, 43' left of centerline, 16' AGL/1095' MSL, tree 1529' from departure end of runway, 125' left of centerline, 60' AGL/1149' MSL, tree 1824' from departure end of runway, 665' right of centerline, 59' AGL/1171' MSL. **Rwy 18**, tree 1899' from departure end of runway, 8' left of centerline, 64' AGL/1103' MSL, tree 2051' from departure end of runway, 662' right of centerline, 50' AGL/1108' MSL. **Rwy 36**, ground beginning 16' from departure end of runway, from 407' right to 487' left of centerline, 1088' MSL.

OMAHA, NE

EMPLEY AIRFIELD (OMA)
AMDT 5 08045 (FAA)

DEPARTURE PROCEDURE: **Rwys 14L, 14R**, Climb heading 139° to 2600 before proceeding on course. **Rwy 18**, Climb heading 175° to 2600 before turning right. **Rwys 32L, 32R**, Climb heading 319° to 2600 before proceeding westbound. **Rwy 36**, Climb heading 355° to 2600 before turning left.

NOTES: **Rwy 14L**, Trees beginning 3956' from departure end of runway, 115' left of centerline, up to 107' AGL/1322' MSL. **Rwy 14R**, Tree 3972' from departure end of runway, 1316' left of centerline, 108' AGL/1088' MSL. **Rwy 18**, Tower, pole, and tree beginning 3953' from departure end of runway, 852' left of centerline up to 136' AGL/1114' MSL. **Rwy 32L**, Pole and tree beginning 969' from departure end of runway, 748' right of centerline, up to 70' AGL/1054' MSL. **Rwy 32R**, Trees beginning 2217' from departure end of runway, 767' right of centerline, up to 106' AGL/1089' MSL. **Rwy 36**, Poles and tree beginning 940' from departure end of runway, 674' left and right of centerline, up to 83' AGL/1064' MSL.

31 MAY 2012 to 28 JUN 2012

31 MAY 2012 to 28 JUN 2012

12152



TAKE-OFF MINIMUMS AND (OBSTACLE) DEPARTURES PROCEDURES





TAKE-OFF MINIMUMS AND (OBSTACLE) DEPARTURE PROCEDURES



12152

OMAHA, NE (CON'T)

MILLARD (MLE)

AMDT 3 07074 (FAA)

TAKE-OFF MINIMUMS: **Rwy 30**, 300-1¼ or std. w/ min. climb of 370' per NM to 3000.DEPARTURE PROCEDURE: **Rwy 12**, climb via heading 123° to 3200 before proceeding on course.**Rwy 30**, climb via heading 303° to 3000 before proceeding on course.NOTE: **Rwy 12**, multiple trees, power poles and highway signs beginning 250' from departure end of runway, 152' left of centerline, up to 35' AGL/1101' MSL. Multiple trees and fences beginning 3' from departure end of runway, 381' right of centerline, up to 63' AGL/1104' MSL. Multiple street lights beginning 1506' from departure end of runway, 678' left of centerline to 568' right of centerline, up to 46' AGL/1115' MSL. **Rwy 30**, multiple towers, trees, power poles, buildings, street lights, fences, and road beginning 13' from departure end of runway, 264' left of centerline, up to 100' AGL/1270' MSL. Multiple trees and power poles beginning 516' from departure end of runway, 343' right of centerline, up to 88' AGL/1137' MSL.**ORD, NE**

EVELYN SHARP FIELD (ODX)

AMDT 3 09127 (FAA)

TAKE-OFF MINIMUMS: **Rwys 17, 35**, NA-Environmental.DEPARTURE PROCEDURE: **Rwy 13**, climb heading 131° to 3000 before turning right.NOTE: **Rwy 13**, pole 860' from DER, 498' left of centerline, 39' AGL/2098' MSL. Trees beginning 705' from DER, 505' left of centerline, up to 37' AGL/2096' MSL. Trees beginning 43' from DER, 443' right of centerline, up to 45' AGL/2104' MSL. **Rwy 31**, trees beginning 2590' from DER, 276' left of centerline, up to 84' AGL/2183' MSL. Poles beginning 1234' from DER, 1' left of centerline, up to 60' AGL/2130' MSL. Tank 2615' from DER, 256' left of centerline, 69' AGL/2139' MSL. Fence 199' from DER, 241' left of centerline, 5' AGL/2075' MSL. Tree 55' from DER, 348' right of centerline, 2' AGL/2072' MSL.**OSHKOSH, NE**

GARDEN COUNTY (OKS)

ORIG 05020 (FAA)

DEPARTURE PROCEDURE: **Rwy 12**, climb via heading 125° to 4000 before turning right.**OTTAWA, KS**

OTTAWA MUNI (OWI)

AMDT 1 11293 (FAA)

TAKE-OFF MINIMUMS: **Rwys 13, 31**, NA-Environmental. **Rwy 35**, 400-3 or std. w/min climb of 220' per NM to 1400.

DEPARTURE PROCEDURE: Climb heading 356° to 1600 before turning right.

NOTE: **Rwy 35**, pole 1792' from DER, 100' left of centerline, 48' AGL/1011' MSL.**PAOLA, KS**

MIAMI COUNTY (K81)

ORIG 11349 (FAA)

NOTE: **Rwy 3**, trees beginning 288' from DER, 317' right of centerline, up to 100' AGL/1034' MSL. Trees beginning 1340' from DER, 93' left of centerline, up to 100' AGL/1034' MSL. **Rwy 21**, vehicles on roadway across centerline 891' from DER, up to 15' AGL/964' MSL. Trees beginning 1162' from DER, 54' right of centerline, up to 100' AGL/1049' MSL. Power lines beginning 3190' from DER, left and right of centerline, up to 120' AGL/1059' MSL.**PARSONS, KS**

TRI-CITY (PFF)

ORIG 08269 (FAA)

NOTE: **Rwy 17**, trees beginning 23' from departure end of runway, 253' right of centerline, up to 66' AGL/917' MSL. Trees and power poles beginning 8' from departure end of runway, 243' left of centerline, up to 56' AGL/916' MSL. **Rwy 35**, trees beginning 12' from departure end of runway, 138' right of centerline, up to 40' AGL/956' MSL. Vehicle on road 720' from departure end of runway, 7' left and right of centerline, 17' AGL/941' MSL. Trees beginning 728' from departure end of runway, 66' left of centerline, up to 20' AGL/935' MSL.**PHILLIPSBURG, KS**

PHILLIPSBURG MUNI (PHG)

ORIG 07018 (FAA)

TAKE-OFF MINIMUMS: **Rwys 3, 21**, NA (Turf runway)NOTE: **Rwy 31**, trees 5843' from departure end of runway, 1981' left of centerline, 100' AGL/2059' MSL.**PITTSBURG, KS**

ATKINSON MUNI (PTS)

AMDT 1 11097 (FAA)

TAKE-OFF MINIMUMS: **Rwy 4**, 300-1 or std. w/ min. climb of 362' per NM to 1200.NOTE: **Rwy 4**, water tank antenna 3415' from DER, 1104' left of centerline, 149' AGL/1079' MSL. Grain tower 2322' from DER, 211' left of centerline, 89' AGL/1028' MSL. Trees beginning 216' from DER, 56' left of centerline, up to 100' AGL/971' MSL. Tree 845' from DER, 138' right of centerline, up to 100' AGL/977' MSL. **Rwy 16**, trees beginning 1017' from DER, 37' left of centerline, up to 100' AGL/989' MSL. OL on pole 609' from DER, 577' left of centerline, 52' AGL/972' MSL. Hangar and vent on hangar beginning 133' from DER, 387' right of centerline, up to 23' AGL/953' MSL. Trees beginning 1601' from DER, 135' right of centerline, up to 100' AGL/992' MSL. **Rwy 22**, Trees beginning 672' from DER, 344' left of centerline, up to 100' AGL/985' MSL. Pole 1082' from DER, 166' left of centerline, 44' AGL/969' MSL. Pole 1268' from DER, 54' right of centerline, 40' AGL/975' MSL. **Rwy 34**, trees beginning 1644' from DER, 25' left of centerline, up to 100' AGL/1039' MSL.

31 MAY 2012 to 28 JUN 2012

31 MAY 2012 to 28 JUN 2012

12152



TAKE-OFF MINIMUMS AND (OBSTACLE) DEPARTURES PROCEDURES





TAKE-OFF MINIMUMS AND (OBSTACLE) DEPARTURE PROCEDURES



12152

RUSHVILLE, NE

MODISSETT (9V5)
ORIG 09239 (FAA)

NOTE: **Rwy 14**, trees 21' from DER, 210' right of centerline, up to 47' AGL/3792' MSL. Multiple trees beginning 251' from DER, 302' left of centerline, up to 50' AGL/3805' MSL. Multiple power poles beginning 427' from DER, 31' left of centerline, up to 47' AGL/3834' MSL. Multiple power poles beginning 1179' from DER, 235' right of centerline, up to 67' AGL/3816' MSL. Multiple buildings beginning 415' from DER, 409' left of centerline, up to 25' AGL/3778' MSL. Fence, 203' from DER, 318' left of centerline, 4' AGL/3757' MSL. **Rwy 32**, terrain 964' from DER, 355' left of centerline, 0' AGL/3778' MSL. Fence, 51' from DER, 282' left of centerline, 4' AGL/3751' MSL.

RUSSELL, KS

RUSSELL MUNI (RSL)
AMDT 1 07298 (FAA)

DEPARTURE PROCEDURE: **Rwy 17**, climb via heading 167° to 3400 before turning east.

NOTE: **Rwy 17**, post 167' from departure end of runway, 324' left of centerline, 6' AGL/1868' MSL. **Rwy 35**, multiple poles beginning 417' from departure end of runway, 142' right of centerline, up to 30' AGL/1890' MSL.

SALINA, KS

SALINA MUNI (SLN)
ORIG 08325 (FAA)

NOTE: **Rwy 4**, hangar 1560' from departure end of runway, 196' right of centerline, 52' AGL/1302' MSL. **Rwy 12**, rod on obstruction light GS 1608' from departure end of runway, 617' left of centerline, 44' AGL/1315' MSL. Trees beginning 4018' from departure end of runway, 421' left of centerline, up to 100' AGL/1379' MSL. Trees beginning 5330' from departure end of runway, 1917' right of centerline, up to 100' AGL/1419' MSL. **Rwy 17**, road with vehicles 1458' from departure end of runway, from left to right of centerline, up to 15' AGL/1314' MSL. Pole 1505' from departure end of runway, 782' right of centerline, 12' AGL/1312' MSL. **Rwy 18**, rising terrain beginning 537' from departure end of runway, 338' right of centerline, up to 1309' MSL. Road with vehicles beginning 891' from departure end of runway, 586' left of centerline, up to 15' AGL/1314' MSL. Road with vehicles beginning 1095' from departure end of runway, 762' right of centerline, up to 15' AGL/1324' MSL. Trees beginning 2065' from departure end of runway, from left to right of centerline, up to 100' AGL/1409' MSL. **Rwy 22**, trees beginning 4195' from departure end of runway, 65' right of centerline, up to 100' AGL/1399' MSL. **Rwy 30**, trees beginning 1227' from departure end of runway, 785' left of centerline, up to 100' AGL/1349' MSL. Trees beginning 2400' from departure end of runway, from left to right of centerline, up to 100' AGL/1359' MSL. **Rwy 36**, trees beginning 367' from departure end of runway, 305' left of centerline, up to 100' AGL/1349' MSL. Trees beginning 1663' from departure end of runway, from left to right of centerline, up to 100' AGL/1349' MSL.

SCOTT CITY, KS

SCOTT CITY MUNI (TQK)
ORIG 12040 (FAA)

NOTE: **Rwy 17**, vehicle on road beginning 30' from DER, left and right of centerline, up to 15' AGL/2964' MSL. **Rwy 35**, trees beginning 501' from DER, 524' left of centerline, up to 30' AGL/2989' MSL.

SCOTTSBLUFF, NE

WESTERN NEBRASKA RGNL
WILLIAM B. HEILIG FIELD (BFF)
AMDT 4 93175 (FAA)

DEPARTURE PROCEDURE: **Rwy 23**, climbing right turn to 5500 via heading 300° before proceeding on course. **Rwy 30**, climb runway heading to 5500 before proceeding on course.

SCRIBNER, NE

SCRIBNER STATE (SCB)
ORIG 11013 (FAA)

NOTE: **Rwy 12**, trees beginning 644' from DER, 225' left of centerline up to 100' AGL/1440' MSL. **Rwy 17**, aircraft on taxiway 958' from DER, 188' left of centerline 29' AGL/1353' MSL. Trees beginning 1391' from DER, 171' right of centerline up to 100' AGL/1420' MSL. **Rwy 30**, trees beginning 1492' from DER, 461' left of centerline up to 100' AGL/1420' MSL. **Rwy 35**, trees beginning 1362' from DER, 273' right of centerline up to 100' AGL/1414' MSL.

SEWARD, NE

SEWARD MUNI (SWT)
ORIG 96228 (FAA)

TAKE-OFF MINIMUMS: **Rwy 22**, NA.
DEPARTURE PROCEDURE: **Rwy 4**, climb to 2800 before turning on course. **Rwy 16**, climb runway heading to 3500 before turning right. **Rwy 34**, climb runway heading to 3000 before turning left.

SIDNEY, NE

SIDNEY MUNI/LLOYD W. CARR FIELD (SNY)
AMDT 1 08213 (FAA)

TAKE-OFF MINIMUMS: **Rwys 3, 21** NA-Environmental.

SUPERIOR, NE

SUPERIOR MUNI (12K)
AMDT 1 12152 (FAA)

TAKE-OFF MINIMUMS: **Rwys 18, 36**, NA-environmental.

NOTE: **Rwy 14**, trees 1037' from DER, left and right of centerline, up to 55' AGL/1674' MSL. **Rwy 32**, rising terrain beginning 100' from DER, 492' left of centerline, up to 1713' MSL.

31 MAY 2012 to 28 JUN 2012

31 MAY 2012 to 28 JUN 2012

12152



TAKE-OFF MINIMUMS AND (OBSTACLE) DEPARTURES PROCEDURES





TAKE-OFF MINIMUMS AND (OBSTACLE) DEPARTURE PROCEDURES



12152

SYRACUSE, KS

SYRACUSE-HAMILTON COUNTY MUNI (3K3)
ORIG-A 11153 (FAA)

TAKE-OFF MINIMUMS: **Rwy 13**, 300-1¼ or std. w/min. climb of 255' per NM to 3700.

DEPARTURE PROCEDURE: **Rwy 31**, climb heading 293° to 4000 before turning right.

NOTE: **Rwy 13**, vehicle on road beginning 5' from DER, left and right of centerline, up to 15' AGL/3324' MSL. Trees beginning 104' from DER, 288' left of centerline, up to 40' AGL/3349' MSL. Trees beginning 196' from DER, 130' right of centerline, up to 40' AGL/3349' MSL. Tower 9042' from DER 667' left of centerline, 303' AGL/3533' MSL. Tower 9042' from DER 667' left of centerline, 303' AGL/3533' MSL. **Rwy 18**, grain bin 465' from DER, 506' right of centerline, 21' AGL/3331' MSL. Water tower 1898' from DER, 393' left of centerline, 99' AGL/3399' MSL. **Rwy 31**, vehicle on road beginning 26' from DER, 328' left of centerline, up to 15' AGL/3324' MSL. **Rwy 36**, powerlines beginning 1596' from DER, left and right of centerline, up to 52' AGL/3367' MSL.

TEKAMAH, NE

TEKAMAH MUNI (TQE)
AMDT 2 07298 (FAA)

DEPARTURE PROCEDURE: **Rwy 32**, climb via heading 327° to 1500 before turning left.

NOTE: **Rwy 14**, north-south road and vehicle 483' left of centerline at departure end of runway, 15' AGL/1044' MSL. **Rwy 32**, trees 954' from departure end of runway, 426' left of centerline, up to 100' AGL/1129' MSL.

THEDFORD, NE

THOMAS COUNTY (TIF)
AMDT 1 08269 (FAA)

NOTE: **Rwy 11**, trees and rising terrain beginning 36' from departure end of runway, 458' right of centerline, up to 75' AGL/3054' MSL. Vehicles on road beginning 749' from departure end of runway, 351' left of centerline, up to 17' AGL/2936' MSL. **Rwy 29**, trees and rising terrain beginning 15' from departure end of runway, 223' left of centerline, up to 75' AGL/3034' MSL.

TOPEKA, KS

FORBES FIELD (FOE)
ORIG 09183 (FAA)

NOTE: **Rwy 3**, trees beginning 1424' from DER, 217' left of centerline, up to 59' AGL/1099' MSL. Tree 1523' from DER, 370' right of centerline, 49' AGL/1088' MSL. **Rwy 31**, rising terrain 38' from DER, 441' right of centerline, 1064' MSL.

TOPEKA, KS (CON'T)

PHILIP BILLARD MUNI (TOP)
AMDT 1 09015 (FAA)

TAKE-OFF MINIMUMS: **Rwy 22**, 200-1¼ or std. w/min. climb of 286' per NM to 1200.

DEPARTURE PROCEDURE: **Rwy 22**, climb heading 224° to 1900 before turning right. **Rwy 31**, climb heading 309° to 1800 before turning left.

NOTE: **Rwy 4**, antenna 1049' from departure end of runway, 528' left of centerline, 57' AGL/927' MSL. Pole 996' from departure end of runway, 382' left of centerline, 38' AGL/908' MSL. **Rwy 13**, tree 378' from departure end of runway, 413' right of centerline, 100' AGL/912' MSL. Vehicle on road 80' from departure end of runway, 371' left of centerline, 15' AGL/889' MSL. **Rwy 18**, trees beginning 1062' from departure end of runway, 329' left of centerline, up to 100' AGL/1007' MSL. Trees beginning 696' from departure end of runway, 201' right of centerline, up to 100' AGL/993' MSL. Pole 2276' from departure end of runway, 491' right of centerline, 64' departure end of runway, 386' left of centerline, up to 150' AGL/1031' MSL. Trees beginning 1495' from departure end of runway, on centerline, up to 100' AGL/946' MSL. Trees beginning 1722' from departure end of runway, 248' right of centerline, up to 100' AGL/945' MSL. Elevator 3783' from departure end of runway, 947' left of centerline, 131' AGL/1001' MSL. **Rwy 31**, trees beginning 1019' from departure end of runway, 693' left of centerline, up to 100' AGL/977' MSL. **Rwy 36**, trees beginning 3026' from departure end of runway, 265' left of centerline, up to 100' AGL/975' MSL. Rising terrain with trees beginning 1.1 NM from departure end of runway, on centerline, up to 100' AGL/1129' MSL.

ULYSSES, KS

ULYSSES (ULS)
AMDT 2A 10014 (FAA)

TAKE-OFF MINIMUMS: **Rwy 12**, 500-3 or std. with a min. climb of 225' per NM to 3700. **Rwy 17**, 300-1¼ or std. w/min. climb of 281' per NM to 3500.

DEPARTURE PROCEDURE: **Rwy 17**, climb to 3700 before turning on course.

NOTE: **Rwy 17**, tower 1.38 NM from DER, 124' right of centerline, 249' AGL/3305' MSL.

VALENTINE, NE

MILLER FIELD (VTN)
AMDT 2 05132 (FAA)

DEPARTURE PROCEDURE: **Rwy 3**, climb heading 028° to 4000 before proceeding on course. **Rwy 32**, climb heading 317° to 4000 before proceeding on course.

NOTE: **Rwy 14**, multiple fences beginning 398' from departure end of runway, 495' right of centerline, up to 5' AGL/2593' MSL.

31 MAY 2012 to 28 JUN 2012

31 MAY 2012 to 28 JUN 2012

12152



TAKE-OFF MINIMUMS AND (OBSTACLE) DEPARTURES PROCEDURES





TAKE-OFF MINIMUMS AND (OBSTACLE) DEPARTURE PROCEDURES



12152

WAHOO, NE

WAHOO MUNI (AHQ)
ORIG 08213 (FAA)

TAKE-OFF MINIMUMS: **Rwys 13, 31**, NA-Environmental.
NOTE: **Rwy 2**, terrain beginning 1' from departure end of runway, 360' left of centerline, up to 1229' MSL. Terrain beginning 1' from departure end of runway, 360' right of centerline, up to 1224' MSL. Pole 725' from departure end of runway, 539' left of centerline, 29' AGL/1258' MSL. Vehicles on road beginning 740' from departure end of runway, from left to right of centerline, up to 15' AGL/1244' MSL. **Rwy 20**, fence, buildings, trees, power poles, and street lights beginning 244' from departure end of runway, 401' right of centerline, up to 52' AGL/1277' MSL. Vehicles on road, power poles, and wires beginning 500' from departure end of runway, 477' left of centerline, up to 29' AGL/1246' MSL. Trees beginning 2510' from departure end of runway, 631' left of centerline, up to 74' AGL/1291' MSL. Elevator 3446' from departure end of runway, 474' left of centerline, 114' AGL/1329' MSL.

WASHINGTON, KS

WASHINGTON COUNTY MEMORIAL (K38)
ORIG 11013 (FAA)

NOTE: **Rwy 17**, vehicles on road beginning 127' from DER, 500' right of centerline, up to 15' AGL/1444' MSL. Power lines beginning 1746' from DER, 944' left of centerline, up to 100' AGL/1529' MSL. Trees beginning 734' from DER, 305' right of centerline, up to 100' AGL/1529' MSL. **Rwy 35**, vehicles on road beginning 185' from DER, 504' left of centerline, up to 15' AGL/1454' MSL. Trees beginning 1228' from DER, 695' left of centerline, up to 100' AGL/1539' MSL. Trees 2543' from DER, 617' left of centerline, up to 100' AGL/1529' MSL.

WAYNE, NE

WAYNE MUNI/ STAN MORRIS FLD (LCG)
AMDT 4 11125 (FAA)

TAKE-OFF MINIMUMS: **Rwys 13, 31**, NA-Environmental. **Rwy 5**, 300-1/4 or std. w/ min. climb of 260' per NM to 1700.
DEPARTURE PROCEDURE: **Rwy 18**, climb heading 175° to 1900 before turning right. **Rwy 23**, climb heading 228° to 1900 before turning right.
NOTE: **Rwy 5**, trees beginning 2799' from DER, 442' left of centerline, up to 48' AGL/1507' MSL. Fence 39' from DER, 347' right of centerline, 9' AGL/1429' MSL. Trees and poles beginning 399' from DER, 170' right of centerline, up to 66' AGL/1603' MSL. **Rwy 18**, trees beginning 38' from DER, 275' left of centerline, up to 17' AGL/1446' MSL. Terrain beginning 195' from DER, 279' left of centerline, up to 1438' MSL. Vehicle on road beginning 664' from DER, crossing left to right, up to 15' AGL/1455' MSL. **Rwy 23**, airport beacon 114' from DER, 458' left of centerline, 55' AGL/1489' MSL. Building 422' from DER, 280' left of centerline, 16' AGL/1445' MSL. Trees and pole beginning 291' from DER, 142' left of centerline, up to 61' AGL/1490' MSL. Trees and poles beginning 225' from DER, 77' right of centerline, up to 74' AGL/1503' MSL. Building 1287' from DER, 507' right of centerline, 40' AGL/1469' MSL. **Rwy 36**, tree and pole beginning 93' from DER, 294' left of centerline, up to 27' AGL/1453' MSL. Pole 422' from DER, 436' right of centerline, 27' AGL/1453' MSL.

WELLINGTON, KS

WELLINGTON MUNI (EGT)
ORIG 07298 (FAA)

NOTE: **Rwy 17**, terrain 104' from departure end of runway, 488' right of centerline, 0' AGL/1275' MSL.

WICHITA, KS

BEECH FACTORY (BEC)
ORIG 98169 (FAA)

TAKE-OFF MINIMUMS: **Rwy 36**, 500-1 or std. with a min. climb of 240' per NM to 2000.
DEPARTURE PROCEDURE: **Rwy 36**, climb runway heading to 2000 before proceeding on course.
NOTE: **Rwy 36**, 1810' tower N37°42'47" W97°14'52".

COLONEL JAMES JABARA (AAO)
AMDT 2 83328 (FAA)

DEPARTURE PROCEDURE: **Rwy 18**, south and west departures (180° CW 270°) climb to 2000 via runway heading before proceeding on course.

WICHITA MID-CONTINENT (ICT)

ORIG 08101 (FAA)

NOTE: **Rwy 1L**, tree and poles beginning 1219' from departure end of runway, 679' left of centerline, up to 34' AGL/1366' MSL.

WINFIELD/ARKANSAS CITY, KS

STROTHER FIELD (WLD)
ORIG 11069 (FAA)

NOTE: **Rwy 13**, trees beginning 1939' from DER, 785' left of centerline, up to 100' AGL/1249' MSL. **Rwy 31**, trees beginning 1649' from DER, 59' left of centerline, up to 100' AGL/1264' MSL. **Rwy 35**, trees beginning 821' from DER, 674' right of centerline, up to 100' AGL/1254' MSL.

YORK, NE

YORK MUNI (JYR)
AMDT 1 09239 (FAA)

TAKE-OFF MINIMUMS: **Rwys 5, 23**, NA-Environmental.
NOTE: **Rwy 35**, Catenary beginning 1290' from DER, 467' right of centerline, up to 79' AGL/1719' MSL. Pole 1396' from DER, 220' left of centerline, 55' AGL/1700' MSL.

31 MAY 2012 to 28 JUN 2012

31 MAY 2012 to 28 JUN 2012

12152



TAKE-OFF MINIMUMS AND (OBSTACLE) DEPARTURES PROCEDURES

