

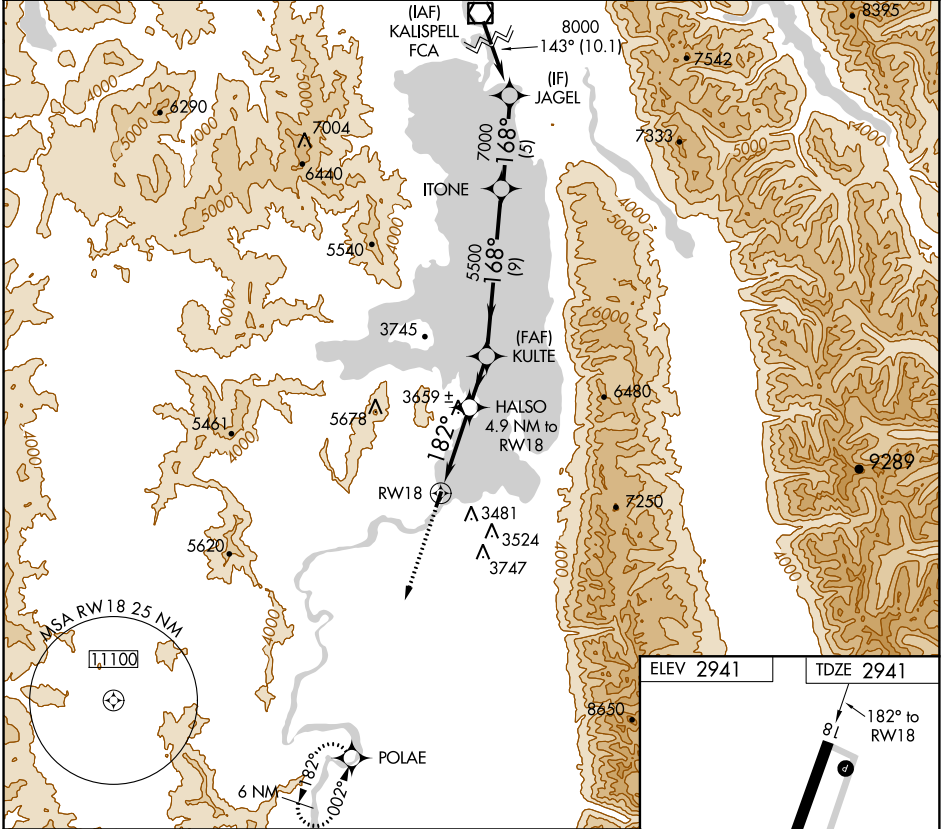
| | | |
|-------------|----------|-------------|
| APP CRS | Rwy Idg | 4195 |
| 182° | TDZE | 2941 |
| | Apt Elev | 2941 |

RNAV (GPS) RWY 18

POLSON (8S1)

| | |
|---|--|
| <p>Procedure NA at night. DME/DME RNP-0.3 NA. Use Glacier Park Intl altimeter setting. Helicopter visibility reduction below 1 SM NA.</p> | <p>MISSED APPROACH: Climb to 9200 direct POLAE and hold.</p> |
|---|--|

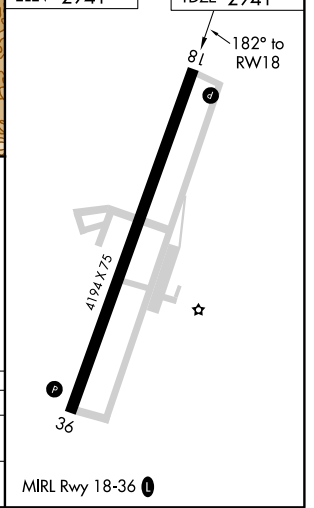
| | | |
|--|--|---------------------------------|
| GLACIER PARK INTL ASOS 132.625 | SALT LAKE CENTER 133.4 285.4 | UNICOM 122.8 (CTAF) 0 |
|--|--|---------------------------------|



NW-1, 09 NOV 2017 to 07 DEC 2017

NW-1, 09 NOV 2017 to 07 DEC 2017

| | |
|-----------|-----------|
| ELEV 2941 | TDZE 2941 |
|-----------|-----------|



| | | | | | | |
|----------|---------------------------|---------------------------|--------|-------|-------|-------------------|
| 9200 | POLAE | HALSO 4.9 NM to RWY 18 | KULTE | ITONE | JAGEL | FCA VOR/DME |
| | | ≤ 3.09° TCH 30 | | | | 8000 |
| | | 182° | 168° | 143° | | Procedure Turn NA |
| | | 4560 | 5500 | 7000 | 8000 | |
| | | 4.9 NM | 2.9 NM | 9 NM | 5 NM | 10.1 NM |
| CATEGORY | A | B | C | D | | |
| LNAV MDA | 4480-1¼ 1539 (1600-1¼) | 4480-1½ 1539 (1600-1½) | | NA | | |
| CIRCLING | 4480-1¼ 1539 (1600-1¼) | 4480-1½ 1539 (1600-1½) | | NA | | |

| | | |
|-------------|----------|-------------|
| APP CRS | Rwy Idg | 4195 |
| 013° | TDZE | 2941 |
| | Apt Elev | 2941 |

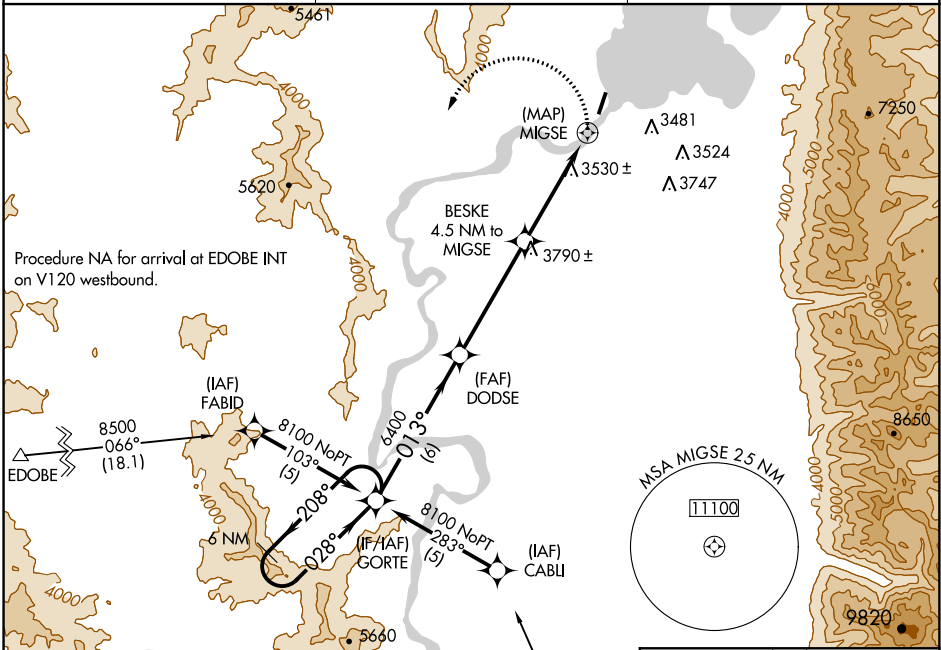
RNAV (GPS) RWY 36

POLSON (8S1)

NA Procedure NA at night. DME/DME RNP-0.3 NA.
 Use Glacier Park Intl altimeter setting.
 Helicopter visibility reduction below 1 SM NA.

MISSED APPROACH: Climbing left turn to 9000 direct GORTE WP and hold.

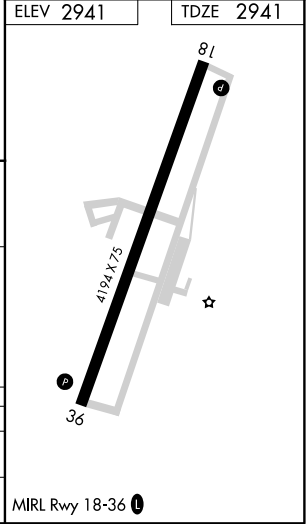
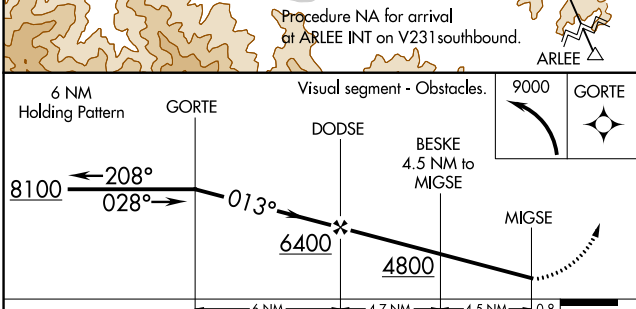
| | | |
|--|--|-------------------------------|
| GLACIER PARK INTL ASOS 132.625 | SALT LAKE CENTER 133.4 285.4 | UNICOM 122.8 (CTAF) |
|--|--|-------------------------------|



NW-1, 09 NOV 2017 to 07 DEC 2017

NW-1, 09 NOV 2017 to 07 DEC 2017

| | |
|-----------|-----------|
| ELEV 2941 | TDZE 2941 |
|-----------|-----------|



| CATEGORY | A | B | C | D |
|----------|---------------------------|---------------------------|---|----|
| LNAV | 4340-1¼ 1399 (1400-1¼) | 4340-1½ 1399 (1400-1½) | | NA |
| CIRCLING | 4340-1¼ 1399 (1400-1¼) | 4340-1½ 1399 (1400-1½) | | NA |