

NDB RQM	APP CRS	Rwy Idg TDZE	N/A
<b>221</b>	<b>065°</b>	Apt Elev	<b>1825</b>

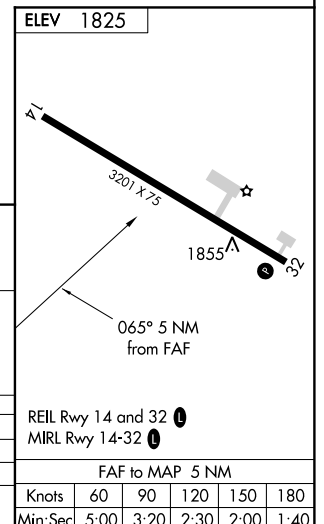
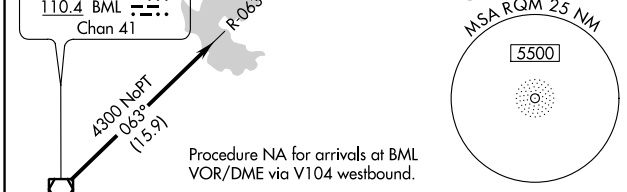
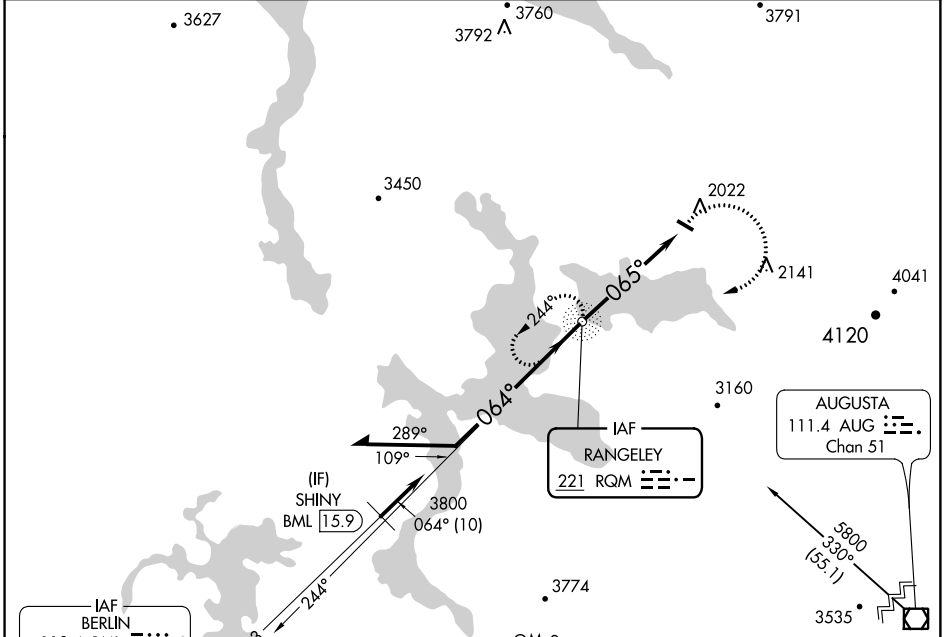
# NDB-A

STEVEN A BEAN MUNI (8B/)

Obtain local altimeter setting on CTAF; when not received, use Berlin altimeter setting.
 

 MISSED APPROACH: Climbing right turn to 5100 direct RQM NDB and hold, continue climb-in-hold to 5100.

AWOS-3PT <b>118.00</b>	BOSTON CENTER <b>124.25 290.5</b>	UNICOM <b>122.8 (CTAF)</b>
---------------------------	--------------------------------------	-------------------------------



Remain within 10 NM	RQM NDB			
	5100	244°	3800	065°
5 NM				

CATEGORY	A	B	C	NA	D
CIRCLING	2520-1 695 (700-1)		NA		
BERLIN ALTIMETER SETTING MINIMUMS					
CIRCLING	2700-1 875 (900-1)	2700-1¼ 875 (900-1¼)	NA		

# NDB-A

NE-1, 17 AUG 2017 to 14 SEP 2017

NE-1, 17 AUG 2017 to 14 SEP 2017

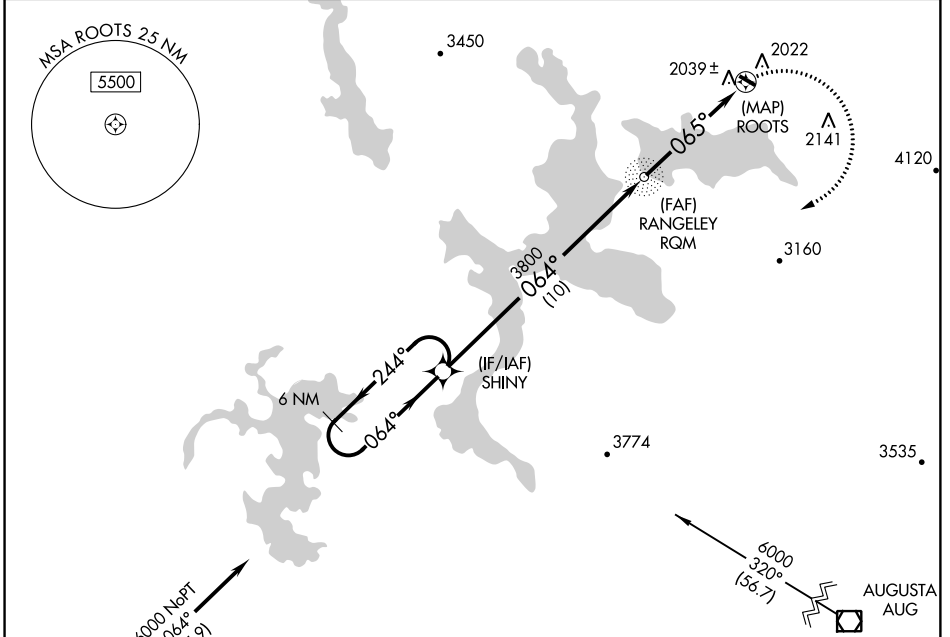
APP CRS	Rwy Idg	N/A
065°	TDZE	N/A
	Apt Elev	1825

# RNAV (GPS)-D

STEVEN A BEAN MUNI (8BØ)

<p><b>▽</b> DME/DME RNP-0.3 NA. Obtain local altimeter setting on CTAF; when not received, use Berlin altimeter setting.</p> <p><b>▲</b> NA</p>	<p>MISSED APPROACH: Climbing right turn to 6000 direct SHINY and hold, continue climb-in-hold to 6000.</p>
---	--

<p>AWOS-3PT <b>118.00</b></p>	<p>BOSTON CENTER <b>124.25 290.5</b></p>	<p>UNICOM <b>122.8 (CTAF) Ø</b></p>
-----------------------------------	--	---



NE-1, 17 AUG 2017 to 14 SEP 2017

NE-1, 17 AUG 2017 to 14 SEP 2017

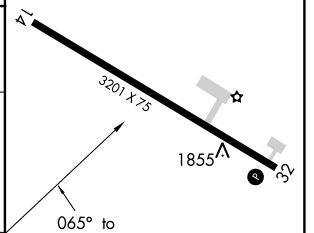
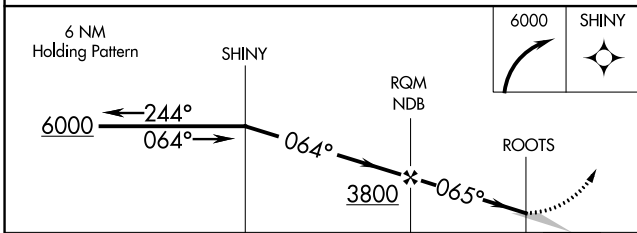
(IAF) BERLIN BML

6000 NoPT 064° (15.9)

Procedure NA for arrivals at BML VOR/DME via V104 westbound.

ELEV 1825

4240



CATEGORY	A	B	C	D
CIRCLING	2380-1	555 (600-1)		NA
BERLIN ALTIMETER SETTING MINIMUMS				
CIRCLING	2560-1	735 (800-1)		NA

REIL Rwy 14 and 32 Ø

MIRL Rwy 14-32 Ø

# RNAV (GPS)-D