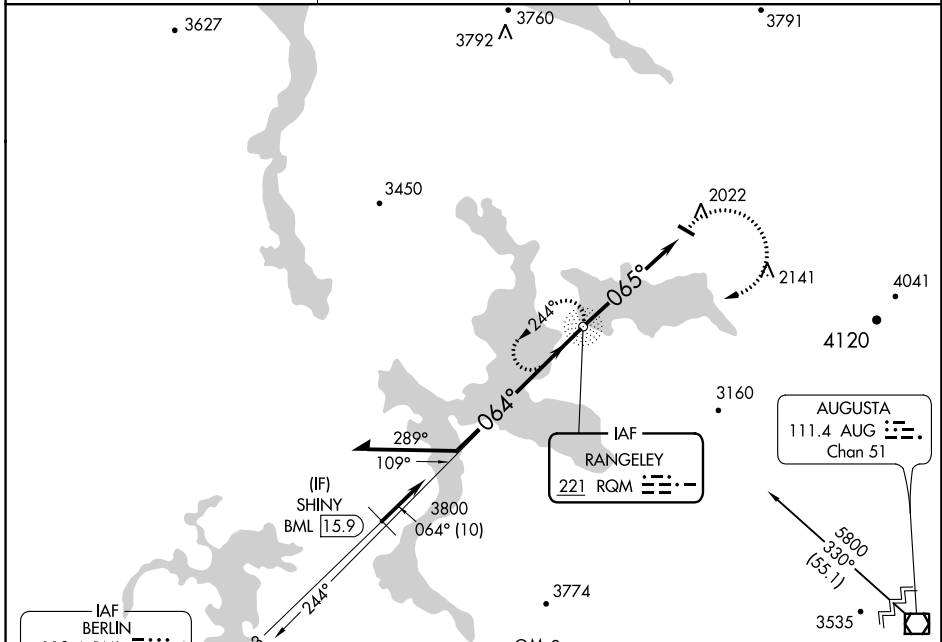


NDB RQM 221	APP CRS 065°	Rwy Idg TDZE Apt Elev	N/A N/A 1825
-----------------------	------------------------	-----------------------------	---

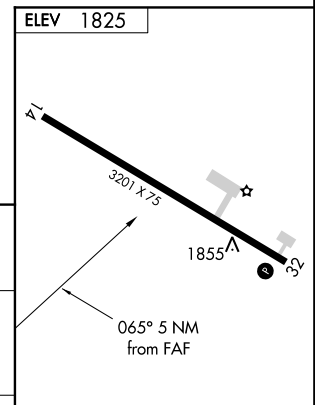
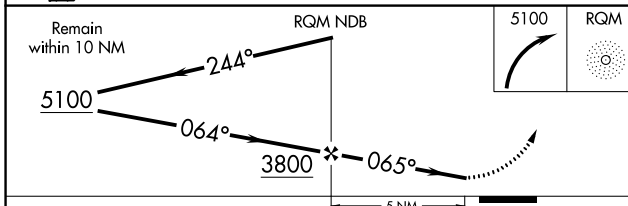
NDB-A
STEVEN A BEAN MUNI (8B/)

▼ Obtain local altimeter setting on CTAF; when not received, use Berlin altimeter setting.
▲ NA MISSED APPROACH: Climbing right turn to 5100 direct RQM NDB and hold, continue climb-in-hold to 5100.

AWOS-3PT 118.00	BOSTON CENTER 124.25 290.5	UNICOM 122.8 (CTAF) 0
---------------------------	--------------------------------------	---------------------------------



IAF BERLIN 110.4 BML Chan 41
 4300 NoPT 063° (15.9)
 (IF) SHINY BML 15.9
 3800 064° (10)
 R-063 244°
 IAF RANGELEY 221 RQM
 MSA RQM 25 NM 5500
 Procedure NA for arrivals at BML VOR/DME via V104 westbound.



CATEGORY	A	B	C	D
CIRCLING	2520-1	695 (700-1)	NA	
BERLIN ALTIMETER SETTING MINIMUMS				
CIRCLING	2700-1 875 (900-1)	2700-1¼ 875 (900-1¼)	NA	

FAF to MAP 5 NM					
Knots	60	90	120	150	180
Min:Sec	5:00	3:20	2:30	2:00	1:40

NE-1, 12 OCT 2017 to 09 NOV 2017

NE-1, 12 OCT 2017 to 09 NOV 2017

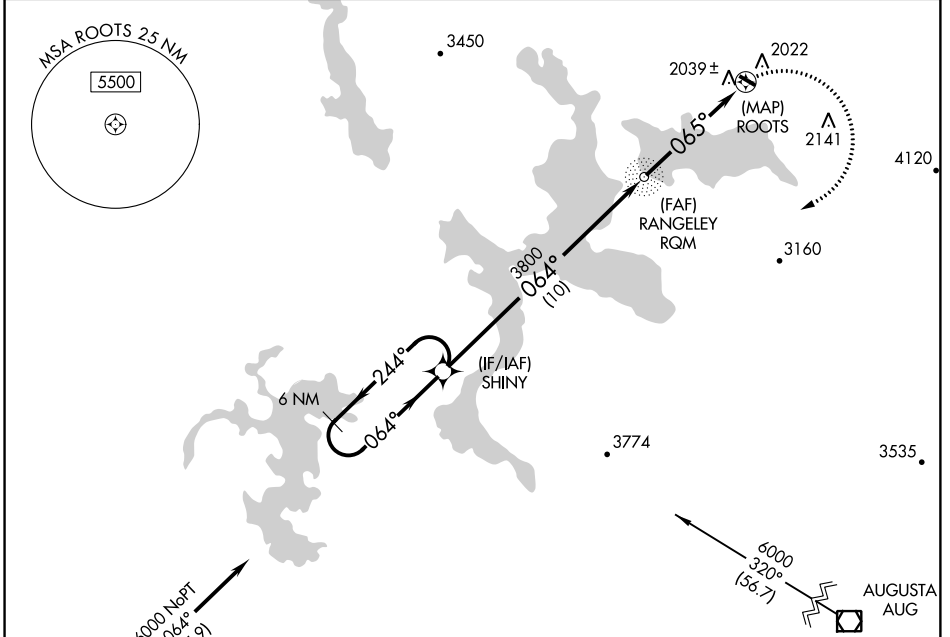
APP CRS	Rwy Idg	N/A
065°	TDZE	N/A
	Apt Elev	1825

RNAV (GPS)-D

STEVEN A BEAN MUNI (8BØ)

<p>▼ DME/DME RNP-0.3 NA. ▲ NA Obtain local altimeter setting on CTAF; when not received, use Berlin altimeter setting.</p>	<p>MISSED APPROACH: Climbing right turn to 6000 direct SHINY and hold, continue climb-in-hold to 6000.</p>
---	--

<p>AWOS-3PT 118.0</p>	<p>BOSTON CENTER 124.25 290.5</p>	<p>UNICOM 122.8 (CTAF) Ø</p>
-----------------------------------	---	--



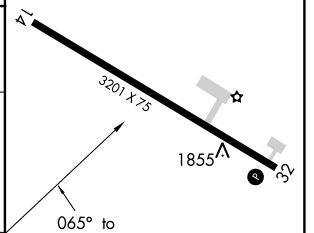
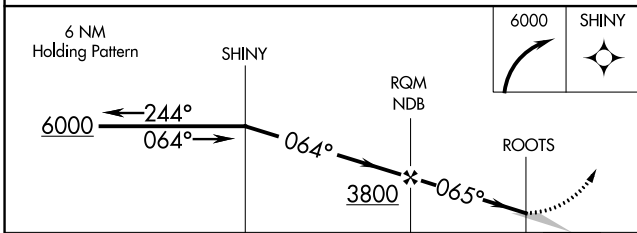
NE-1, 12 OCT 2017 to 09 NOV 2017

NE-1, 12 OCT 2017 to 09 NOV 2017

(IAF) BERLIN BML Procedure NA for arrivals at BML VOR/DME via V104 westbound.

ELEV 1825

4240



CATEGORY	A	B	C	D
CIRCLING	2380-1	555 (600-1)		NA
BERLIN ALTIMETER SETTING MINIMUMS				
CIRCLING	2560-1	735 (800-1)		NA

REIL Rwys 14 and 32 Ø
 MIRL Rwy 14-32 Ø

TAKEOFF MINIMUMS, (OBSTACLE) DEPARTURE PROCEDURES, AND DIVERSE VECTOR AREA (RADAR VECTORS)

12785 INSTRUMENT APPROACH PROCEDURE CHARTS

IFR TAKEOFF MINIMUMS AND (OBSTACLE) DEPARTURE PROCEDURES

Civil Airports and Selected Military Airports

ALL USERS: Airports that have Departure Procedures (DPs) designed specifically to assist pilots in avoiding obstacles during the climb to the minimum enroute altitude, and/or airports that have civil IFR takeoff minimums other than standard, are listed below. Takeoff Minimums and Departure Procedures apply to all runways unless otherwise specified. Altitudes, unless otherwise indicated, are minimum altitudes in MSL.

DPs specifically designed for obstacle avoidance are referred to as Obstacle Departure Procedures (ODPs) and are appropriately described below, or published separately as a graphic procedure. If the ODP is published as a graphic procedure, its name will be listed below, and it can be found in either this volume (civil), or the applicable military volume, as appropriate. Users will recognize graphic obstacle DPs by the term "(OBSTACLE)" included in the procedure title; e.g., TETON TWO (OBSTACLE). If not specifically assigned an ODP, SID, or radar vector as part of an IFR clearance, an ODP may be required to be flown for obstacle clearance, even though not specifically stated in the IFR clearance. When doing so in this manner, ATC should be informed when the ODP being used contains a specified route to be flown, restrictions before turning, and/or altitude restrictions.

Some ODPs, which are established solely for obstacle avoidance, require a climb in visual conditions to cross the airport, a fix, or a NAVAID in a specified direction, or at or above a specified altitude. These procedures are called Visual Climb Over Airport (VCOA). To ensure safe and efficient operations, the pilot must verbally request approval from ATC to fly the VCOA when requesting their IFR clearance.

At some locations where an ODP has been established, a diverse vector area (DVA) may be created to allow radar vectors to be used in lieu of an ODP. DVA information will state that headings will be as assigned by ATC and climb gradients, when applicable, will be published immediately following the specified departure procedure.

Graphic DPs designed by ATC to standardize traffic flows, ensure aircraft separation and enhance capacity are referred to as "Standard Instrument Departures (SIDs)". SIDs also provide obstacle clearance and are published under the appropriate airport section. ATC clearance must be received prior to flying a SID.

CIVIL USERS NOTE: Title 14 Code of Federal Regulations Part 91 prescribes standard takeoff rules and establishes takeoff minimums for certain operators as follows: (1) For aircraft, other than helicopters, having two engines or less – one statute mile visibility. (2) For aircraft having more than two engines – one-half statute mile visibility. (3) For helicopters – one-half statute mile visibility. These standard minima apply in the absence of any different minima listed below.

MILITARY USERS NOTE: Civil (nonstandard) takeoff minima are published below. For military takeoff minima, refer to appropriate service directives.

NAME	TAKEOFF MINIMUMS
------	------------------

AUBURN-LEWISTON, ME

AUBURN-LEWISTON MUNI (LEW)

TAKEOFF MINIMUMS AND (OBSTACLE)

DEPARTURE PROCEDURES

AMDT 5 05076 (FAA)

TAKEOFF MINIMUMS: **Rwy 17**, 500-2¼ or std. with a min. climb of 266' per NM to 900. **Rwy 22**, std. with a min. climb of 312' per NM to 1500, or 1100-2½ for climb in visual conditions.

DEPARTURE PROCEDURE: **Rwy 17**, climb via heading 165° to 900 before turning northeast. **Rwy 22**, climb to 1500 direct LE LOM. Cross LE LOM at 1500 or above before turning southwest. For climb in visual conditions cross Auburn/Lewiston Muni at or above 1300.

TAKEOFF OBSTACLE NOTES: **Rwy 4**, multiple trees beginning 297' from DER, 78' right of centerline, up to 90' AGL/386' MSL. Multiple trees beginning 331' from DER, 277' left of centerline, up to 86' AGL/323' MSL.

Abandoned aircraft 73' from DER, 478' right of centerline, 19' AGL/289' MSL. Abandoned aircraft 36' from DER, 451' right of centerline, 18' AGL/288' MSL. Pole 1487' from DER, 348' right of centerline, 51' AGL/314' MSL. Pole 1011' from DER, 387' left of centerline, 37' AGL/277' MSL. Fence 132' from DER, 306' right of centerline, 11' AGL/267' MSL. **Rwy 17**, tree 1209' from DER, 390' right of centerline, 72' AGL/364' MSL. Tree 909' from DER, 336' right of centerline, 51' AGL/350' MSL. Tree 1819' from DER, 169' left of centerline, 92' AGL/371' MSL. Tree 1053' from DER, 252' left of centerline, 60' AGL/336' MSL.

NAME	TAKEOFF MINIMUMS
------	------------------

AUBURN-LEWISTON, ME (CON'T)

AUBURN-LEWISTON MUNI (CON'T.)

Tree 575' from DER, 175' left of centerline, 39' AGL/322' MSL. Tree 881' from DER, 110' right of centerline, 35' AGL/327' MSL. Terrain 159' from DER, 487' right of centerline, 0' AGL/302' MSL. Tree 1.9 NM from DER, 247' left of centerline, 129' AGL/576' MSL. Terrain 276' from DER, 302' right of centerline, 0' AGL/299' MSL. Road 531' from DER, 156' left of centerline, 0' AGL/305' MSL. Terrain 533' from DER, 463' right of centerline, 0' AGL/302' MSL. Terrain 18' from DER, 140' right of centerline, 0' AGL/289' MSL. Tower 1.7 NM from DER, 4211' left of centerline, 193' AGL/752' MSL. **Rwy 22**, tree 4322' from DER, 1403' right of centerline, 87' AGL/439' MSL. Tree 4970' from DER, 616' left of centerline, 62' AGL/414' MSL. Tree 5547' from DER, 633' right of centerline, 86' AGL/428' MSL. Tree 5242' from DER, 1108' right of centerline, 51' AGL/419' MSL. Tree 3040' from DER, 993' right of centerline, 74' AGL/363' MSL. Ground 4784' from DER, 88' right of centerline, 0' AGL/404' MSL. Ground 3902' from DER, 811' right of centerline, 0' AGL/375' MSL. Tree 3189' from DER, 500' right of centerline, 73' AGL/352' MSL. **Rwy 35**, tree 1877' from DER, 357' left of centerline, 104' AGL/344' MSL. Tree 870' from DER, 380' right of centerline, 72' AGL/312' MSL. Tree 1146' from DER, 378' left of centerline, 77' AGL/317' MSL. Tree 1520' from DER, 170' right of centerline, 62' AGL/302' MSL.

TAKEOFF MINIMUMS, (OBSTACLE) DEPARTURE PROCEDURES, AND DIVERSE VECTOR AREA (RADAR VECTORS)

TAKEOFF MINIMUMS, (OBSTACLE) DEPARTURE PROCEDURES, AND DIVERSE VECTOR AREA (RADAR VECTORS)

17285

AUGUSTA, ME

AUGUSTA STATE (AUG)

TAKEOFF MINIMUMS AND (OBSTACLE)
DEPARTURE PROCEDURES
AMDT 3 11181 (FAA)

TAKEOFF MINIMUMS: **Rwy 8**, 300-1 or std. w/min. climb of 263' per NM to 600. **Rwy 17**, 300-1 or std. w/min. climb of 283' per NM to 600. **Rwy 26**, 400-2 or std. w/min. climb of 313' per NM to 800.
DEPARTURE PROCEDURE: **Rwy 26**, climb heading 260° to 800 before turning right. **Rwy 35**, climb heading 351° to 1000 before turning left.

TAKEOFF OBSTACLE NOTES: **Rwy 8**, trees beginning 197' from DER, 91' right of centerline, up to 70' AGL/443' MSL. Fence 200' from DER, 126' right of centerline, 8' AGL/358' MSL. Pole 921' from DER, 334' right of centerline, 52' AGL/422' MSL. Trees beginning 956' from DER, 588' left of centerline, up to 70' AGL/420' MSL. Tower 5173' from DER, 1864' left of centerline, 156' AGL/527' MSL. **Rwy 17**, trees beginning 102' from DER, 289' right of centerline, up to 100' AGL/529' MSL. Poles beginning 107' from DER, 355' left of centerline, up to 45' AGL/385' MSL. Vehicle on road 229' from DER, 250' left of centerline, 15' AGL/355' MSL. Trees beginning 318' from DER, 107' left of centerline, up to 80' AGL/413' MSL. **Rwy 26**, trees beginning 157' from DER, 13' left of centerline, up to 70' AGL/419' MSL. Tree 270' from DER, 90' right of centerline, 90' AGL/419' MSL. Trees and towers beginning 5728' from DER, 769' right of centerline, up to 186' AGL/666' MSL.

BANGOR, ME

BANGOR INTL (BGR)

TAKEOFF MINIMUMS AND (OBSTACLE)
DEPARTURE PROCEDURES
AMDT 3 17117 (FAA)

TAKEOFF OBSTACLE NOTES: **Rwy 15**, tree 1694' from DER, 868' left of centerline, 56' AGL/215' MSL. Trees beginning 2436' from DER, 1116' left of centerline, up to 89' AGL/271' MSL. Tree 3958' from DER, 1371' left of centerline, 87' AGL/278' MSL.

BAR HARBOR, ME

HANCOCK COUNTY-BAR HARBOR (BHB)

TAKEOFF MINIMUMS AND (OBSTACLE)
DEPARTURE PROCEDURES
AMDT 4A 13066 (FAA)

DEPARTURE PROCEDURE: **Rwy 17**, climbing right turn via heading 220° to 2100 before proceeding on course. **Rwy 22**, climb via heading 224° to 1100 before proceeding east or southeast bound. **Rwy 35**, climb via heading 349° to 600 before proceeding on course.
TAKEOFF OBSTACLE NOTES: **Rwy 4**, road 324' from DER, 524' left of centerline, 15' AGL/79' MSL. Multiple trees beginning 119' from DER, 231' right of centerline, up to 60' AGL/193' MSL. **Rwy 17**, bush 116' from DER, 164' left of centerline, 10' AGL/47' MSL. Tree 245' from DER, 346' right of centerline, 44' AGL/82' MSL. **Rwy 22**, multiple poles and trees beginning 562' from DER, 329' left of centerline, up to 60' AGL/135' MSL. Terrain, multiple poles and trees beginning 450' left of DER, up to 60' AGL/142' MSL. Power lines beginning 626' from DER, 359' right of centerline, 35' AGL/103' MSL. **Rwy 35**, terrain and multiple trees beginning 35' from DER, 340' left of centerline, up to 60' AGL/217' MSL. Glideslope antenna and multiple trees beginning 657' from DER, 565' right of centerline up to 60' AGL/146' MSL.

BARRE-MONTPELIER, VT

EDWARD F. KNAPP STATE (MPV)

TAKEOFF MINIMUMS AND (OBSTACLE)
DEPARTURE PROCEDURES
AMDT 5 14317 (FAA)

TAKEOFF MINIMUMS: **Rwy 17**, 500-2 w/min. climb of 270' per NM to 2700 or 1900-3 for climb in visual conditions. **Rwy 23**, 1900-3 for climb in visual conditions.
DEPARTURE PROCEDURE: **Rwy 5**, climb heading 048° to 2100 then climbing left turn to 3900 direct MPV VOR/DME before proceeding on course. **Rwy 17**, climb heading 168° to 2600 then climbing left turn to 3500 direct MPV VOR/DME before proceeding on course. **Rwy 23**, climbing right turn to 3900 direct MPV VOR/DME before proceeding on course. **Rwys 17, 23**, obtain ATC approval for climb in visual conditions when requesting IFR clearance. Climb in visual conditions to cross Edward F Knapp state airport at or above 2900' MSL.
TAKEOFF OBSTACLE NOTES: **Rwy 5**, vehicles on road beginning 0.69' from DER, crossing centerline, up to 15' AGL/1133' MSL. Terrain 104' from DER, 253' left of centerline, up to 1089' MSL. Trees beginning 347' from DER, crossing centerline, up to 100' AGL/1199' MSL. **Rwy 17**, tower 80' from DER, 368' right of centerline, up to 41' AGL/1223' MSL. Trees beginning 139' from DER, 409' right of centerline, up to 100' AGL/1243' MSL. Navaid 141' from DER, up to 5' AGL/1171' MSL. Navaid 199' from DER, up to 7' AGL/1172' MSL. Pole 257' from DER, 165' left of centerline, up to 27' AGL/1178' MSL. Trees 297' from DER, crossing centerline, up to 100' AGL/1193' MSL. Trees 667' from DER, crossing centerline, up to 100' AGL/1259' MSL. Building 1318' from DER, 254' left of centerline, up to 43' AGL/1221' MSL. Tower 1318' from DER, 669' left of centerline, up to 38' AGL/1208' MSL. Trees 1498' from DER, crossing centerline, up to 100' AGL/1309' MSL. Pole 1703' from DER, 41' right of centerline, up to 33' AGL/1243' MSL. Trees 1898' from DER, 726' right of centerline, up to 100' AGL/1387' MSL. Pole 1970' from DER, 539' right of centerline, up to 27' AGL/1334' MSL. Trees 2088' from DER, crossing centerline, up to 100' AGL/1384' MSL. Trees 4872' from DER, crossing centerline, up to 100' AGL/1579' MSL. **Rwy 23**, poles beginning 2' from DER, 335' left of centerline, up to 39' AGL/1167' MSL. Fence 49' from DER, 276' left of centerline, up to 7' AGL/1127' MSL. Tower 561' from DER, 573' left of centerline, up to 88' AGL/1215' MSL. Building 603' from DER, 426' left of centerline, up to 37' AGL/1159' MSL. Tower 615' from DER, 580' left of centerline, up to 68' AGL/1195' MSL. Rod 615' from DER, 580' left of centerline, up to 60' AGL/1195' MSL. Trees beginning 1263' from DER, crossing centerline, up to 100' AGL/1183' MSL. Pole 2801' from DER, 702' left of centerline, up to 27' AGL/1202' MSL. Pole 2867' from DER, 152' right of centerline, up to 55' AGL/1233' MSL. Trees 2880' from DER, crossing centerline, up to 100' AGL/1243' MSL. Tower 3010' from DER, 404' right of centerline, up to 36' AGL/1221' MSL. Trees 3299' from DER, crossing centerline, up to 100' AGL/1275' MSL. Trees 4491' from DER, crossing centerline, up to 100' AGL/1389' MSL. Trees 4944' from DER, crossing centerline, up to 100' AGL/1459' MSL. Trees 6298' from DER, crossing centerline, up to 100' AGL/1499' MSL. Trees 7273' from DER, crossing centerline, up to 100' AGL/1559' MSL. **Rwy 35**, bush 74' from DER, 288' left of centerline, up to 10' AGL/1097' MSL. Building 81' from DER, 488' right of centerline, up to 6' AGL/1094' MSL. Trees beginning 411' from DER, crossing centerline, up to 100' AGL/1132' MSL.

12 OCT 2017 to 09 NOV 2017

12 OCT 2017 to 09 NOV 2017

TAKEOFF MINIMUMS, (OBSTACLE) DEPARTURE PROCEDURES, AND DIVERSE VECTOR AREA (RADAR VECTORS)

17285

NE-1

TAKEOFF MINIMUMS, (OBSTACLE) DEPARTURE PROCEDURES, AND DIVERSE VECTOR AREA (RADAR VECTORS)

17285

BEDFORD, MA

LAURENCE G. HANSCOM FIELD (BED)
TAKEOFF MINIMUMS AND (OBSTACLE)
DEPARTURE PROCEDURES
AMDT 6 13178 (FAA)

TAKEOFF MINIMUMS: **Rwy 11**, 300-1¼ or std. w/ min. climb of 251' per NM to 400, or alternatively, with standard takeoff minimums and a normal 200' per NM climb gradient, takeoff must occur no later than 2100' prior to DER. **Rwy 23**, 300-2 or std. w/ min. climb of 426' per NM to 500.

TAKEOFF OBSTACLE NOTES: **Rwy 5**, trees, fence, bush, and vegetation beginning 44' from DER, 84' left and 113' right of centerline, up to 39' AGL/171' MSL. Trees and poles beginning 1153' from DER, 11' left and 117' right of centerline, up to 71' AGL/221' MSL. Trees beginning 2528' from DER, 9' left and 2' right of centerline, up to 91' AGL/235' MSL. **Rwy 11**, sign 81' from DER, 237' right of centerline, 14' AGL/126' MSL. Trees beginning 1431' from DER, 684' right of centerline, up to 53' AGL/181' MSL. Trees beginning 1875' from DER, 99' left and 457' right of centerline, up to 73' AGL/231' MSL. Tower 5028' from DER, 1681' left of centerline, 155' AGL/285' MSL. **Rwy 23**, sign 2' from DER, 303' right of centerline, 6' AGL/133' MSL. Vehicle on road 534' from DER, from 293' right to 3' right of centerline, up to 15' AGL/167' MSL. Building 614' from DER, 620' left of centerline, 23' AGL/151' MSL. Trees , terrain, and pole beginning 855 from DER, 379' left and 337' right of centerline, up to 38' AGL/180' MSL. Trees beginning 1090' from DER, 558' left and 263' right of centerline, up to 48' AGL/232' MSL. Trees and building beginning 1588' from DER, 88' left and 138' right of centerline, up to 95' AGL/259' MSL. Trees beginning 2149' from DER, 524' left and 213' right of centerline, up to 100' AGL/286' MSL. Trees, buildings, and tower beginning 3721' from DER, 48' left and 4' right of centerline, up to 100' AGL/379' MSL. **Rwy 29**, sign 13' from DER, 273' right of centerline, 24' AGL/135' MSL. Tree 391' from DER, 487' left of centerline, 20' AGL/153' MSL. Poles and trees beginning 1109' from DER, 734' left and 49' right of centerline, up to 106' AGL/243' MSL. Trees beginning 3007' from DER, 6' left and 49' right of centerline, up to 100' AGL/243' MSL.

BELFAST, ME

BELFAST MUNI (BST)
TAKEOFF MINIMUMS AND (OBSTACLE)
DEPARTURE PROCEDURES
AMDT 2 07130 (FAA)

TAKEOFF MINIMUMS: **Rwy 33**, 300-1¼ or std. with a min. climb of 219' per NM to 600.

DEPARTURE PROCEDURE: **Rwy 15**, climb heading 136° to 900 before turning south.

TAKEOFF OBSTACLE NOTES: **Rwy 33**, light pole 1955' from DER, 510' left of centerline, 100' AGL/297' MSL. Multiple trees beginning 1.4 NM from DER, 1682' left of centerline, up to 80' AGL/429' MSL.

BENNINGTON, VT

WILLIAM H. MORSE STATE (DDH)
TAKEOFF MINIMUMS AND (OBSTACLE)
DEPARTURE PROCEDURES
AMDT 3 12152 (FAA)

TAKEOFF MINIMUMS: **Rwy 13**, std. w/min. climb of 645' per NM to 4000 or 2600-3 for climb in visual conditions .

Rwy 31, 400-1 w/ min. climb of 300' per NM to 4200 or 2600-3 for climb in visual conditions.

DEPARTURE PROCEDURE: **Rwy 13**, climbing left turn direct CAM VOR/DME, continue climb-in-hold (North, right turns, 160° inbound) to 4400 before proceeding on course or...

Rwy 31, climbing right turn direct CAM VOR/DME, continue climb-in-hold (North, right turns, 160° inbound) to 4400 before proceeding on course or...

... For climb in visual conditions: cross William H. Morse State Airport at or above 3300 before proceeding on course. When executing VCOA, notify ATC prior to departure.

TAKEOFF OBSTACLE NOTES: **Rwy 13**, rising terrain beginning 100' from DER, right to left of centerline, up to 868' MSL. Poles beginning 195' from DER, 229' right of centerline, up to 30' AGL/858' MSL. Trees beginning 358' from DER, left and right of centerline, up to 95' AGL/1279' MSL. **Rwy 31**, multiple trees beginning 116' from DER, right and left of centerline, up to 95' AGL/1139' MSL.

BERLIN, NH

BERLIN RGNL (BML)
TAKEOFF MINIMUMS AND (OBSTACLE)
DEPARTURE PROCEDURES
AMDT 1 11069 (FAA)

TAKEOFF MINIMUMS: **Rwy 18**, std. w/min. climb of 462' per NM to 4000 or 3500-3 for climb in visual conditions.

Rwy 36, std. w/min. climb of 400' per NM to 4400 or 3500-3 for climb in visual conditions.

DEPARTURE PROCEDURE: **Rwy 18**, climbing right turn to 7000 direct BML VOR/DME, continue climb in BML VOR/DME holding pattern (hold SW, left turns, 030° inbound) to cross BML VOR/DME at or above the MEA for direction of flight, or for climb in visual conditions cross Berlin RGNL Airport at or above 4500 before proceeding on course. **Rwy 36**, climbing right turn to 7000 direct BML VOR/DME, continue climb in BML VOR/DME holding pattern (hold SW, left turns, 030° inbound) to cross BML VOR/DME at or above the MEA for direction of flight, or for climb in visual conditions cross Berlin RGNL Airport at or above 4500 before proceeding on course.

TAKEOFF OBSTACLE NOTES: **Rwy 18**, building 44' from DER, 361' left of centerline, up to 10' AGL/1143' MSL. Trees 19' from DER, 5' right of centerline, up to 100' AGL/1267' MSL. Trees 44' from DER, 2' left of centerline, up to 100' AGL/1281' MSL. **Rwy 36**, bush 47' from DER, 153' left of centerline, up to 45' AGL/1168' MSL. Trees 27' from DER, 28' right of centerline, up to 100' AGL/1298' MSL. Trees 9' from DER, 123' left of centerline, up to 100' AGL/1224' MSL.

12 OCT 2017 to 09 NOV 2017

12 OCT 2017 to 09 NOV 2017

TAKEOFF MINIMUMS, (OBSTACLE) DEPARTURE PROCEDURES, AND DIVERSE VECTOR AREA (RADAR VECTORS)

17285

NE-1

TAKEOFF MINIMUMS, (OBSTACLE) DEPARTURE PROCEDURES, AND DIVERSE VECTOR AREA (RADAR VECTORS)

17285

BEVERLY, MA

BEVERLY MUNI (BVY)

TAKEOFF MINIMUMS AND (OBSTACLE)
DEPARTURE PROCEDURES
AMDT 3A 16203 (FAA)

DEPARTURE PROCEDURE: **Rwy 27**, climb heading 270° to 700 before turning left.

TAKEOFF OBSTACLE NOTES: **Rwy 9**, bush 15' from DER, 407' right of centerline, 55' AGL/119' MSL. Bush beginning 76' from DER, 377' right of centerline, up to 50' AGL/120' MSL. Tree 127' from DER, 247' left of centerline, 29' AGL/112' MSL. Bush beginning 135' from DER, 248' left of centerline, up to 27' AGL/103' MSL. Bush 228' from DER, 532' left of centerline, 59' AGL/125' MSL. Bush 273' from DER, 515' left of centerline, 73' AGL/138' MSL. trees beginning 303' from DER, 227' right of centerline, up to 19' AGL/106' MSL. Bush beginning 390' from DER, 113' right of centerline, up to 23' AGL/104' MSL. Tree 520' from DER, 342' left of centerline, 77' AGL/138' MSL. Bush beginning 552' from DER, 22' right of centerline, up to 45' AGL/108' MSL. Tree 997' from DER, 394' right of centerline, 84' AGL/133' MSL. Bush 1046' from DER, 141' left of centerline, 81' AGL/130' MSL. Tree 1064' from DER, 539' right of centerline, 86' AGL/134' MSL. Tree 1070' from DER, 619' left of centerline, 90' AGL/149' MSL. Bush beginning 1077' from DER, 43' right of centerline, up to 84' AGL/138' MSL. Tree 1176' from DER, 414' left of centerline, 99' AGL/155' MSL. Bush beginning 1184' from DER, 252' left of centerline, up to 76' AGL/130' MSL. Tree 1204' from DER, 385' right of centerline, 78' AGL/126' MSL. Bush beginning 1301' from DER, 61' left of centerline, up to 81' AGL/131' MSL. Bush 2414' from DER, 1027' left of centerline, 94' AGL/188' MSL. Bush beginning 2438' from DER, 822' left of centerline, up to 106' AGL/197' MSL. Trees beginning 2538' from DER, 633' left of centerline, up to 93' AGL/189' MSL. Bush 2566' from DER, 647' left of centerline, 103' AGL/207' MSL. Bush beginning 2598' from DER, 545' left of centerline, up to 85' AGL/212' MSL. Tree 2661' from DER, 695' left of centerline, 112' AGL/228' MSL. Tree 2662' from DER, 787' left of centerline, 113' AGL/232' MSL. Bush beginning 2678' from DER, 226' left of centerline, up to 116' AGL/236' MSL. Tree 2797' from DER, 543' left of centerline, 99' AGL/227' MSL. Bush 2799' from DER, 330' right of centerline, 106' AGL/182' MSL. Tree 2847' from DER, 141' left of centerline, 101' AGL/214' MSL. Bush beginning 2851' from DER, 23' left of centerline, up to 83' AGL/223' MSL. Tree beginning 2886' from DER, 70' left of centerline, up to 100' AGL/193' MSL. Bush 2927' from DER, 259' right of centerline, 101' AGL/195' MSL. Trees beginning 2930' from DER, 74' left of centerline, up to 101' AGL/214' MSL. Bush beginning 2936' from DER, 66' right of centerline, up to 91' AGL/201' MSL. Tree 2999' from DER, 464' right of centerline, 101' AGL/180' MSL. Bush 3009' from DER, 235' left of centerline, 63' AGL/181' MSL. Tree 3043' from DER, 537' right of centerline, 101' AGL/175' MSL. Bush beginning 3047' from DER, 35' left of centerline, up to 64' AGL/180' MSL.

BEVERLY, MA (CON'T)

Rwy 16, grd 15' from DER, 417' left of centerline, 87' MSL. Rwy sign 17' from DER, 198' left of centerline, 3' AGL/85' MSL. Nt Rwy lt 28' from DER, 82' left of centerline, 2' AGL/83' MSL. Grd 100' from DER, 426' right of centerline, 89' MSL. Bush beginning 113' from DER, 228' right of centerline, up to 27' AGL/125' MSL. Bush beginning 212' from DER, 454' right of centerline, up to 72' AGL/136' MSL. Bush beginning 247' from DER, 451' right of centerline, up to 78' AGL/139' MSL. Bush 268' from DER, 442' left of centerline, 70' AGL/133' MSL. Vehicle in parking lot 289' from DER, 520' right of centerline, 115' MSL. Trees beginning 306' from DER, 263' right of centerline, up to 91' AGL/148' MSL. Bush 312' from DER, 463' left of centerline, 93' AGL/150' MSL. Trees beginning 322' from DER, 319' left of centerline, up to 88' AGL/145' MSL. Bush beginning 378' from DER, 107' right of centerline, up to 76' AGL/135' MSL. Bldg beginning 481' from DER, 616' right of centerline, up to 43' AGL/164' MSL. Bldg 499' from DER, 482' right of centerline, 42' AGL/165' MSL. Bldg 511' from DER, 619' right of centerline, 41' AGL/164' MSL. Vehicle in parking lot 515' from DER, 444' right of centerline, 120' MSL. Bush 531' from DER, 561' left of centerline, 79' AGL/132' MSL. Bldg beginning 543' from DER, 488' right of centerline, up to 44' AGL/168' MSL. Grd 574' from DER, 401' right of centerline, 115' MSL. Bush 576' from DER, 618' left of centerline, 70' AGL/119' MSL. Bldg 609' from DER, 509' right of centerline, 45' AGL/168' MSL. Bush beginning 622' from DER, 345' left of centerline, up to 68' AGL/131' MSL. Vehicle in parking lot 667' from DER, 673' right of centerline, 130' MSL. Ground 669' from DER, 482' right of centerline, 130' MSL. Vehicle in parking lot 679' from DER, 456' right of centerline, 127' MSL. Bush 692' from DER, 422' left of centerline, 76' AGL/132' MSL. Bldg 698' from DER, 655' right of centerline, 30' AGL/160' MSL. Pole 723' from DER, 403' right of centerline, 43' AGL/159' MSL. Bush 744' from DER, 404' left of centerline, 77' AGL/132' MSL. Bldg beginning 758' from DER, 515' right of centerline, up to 37' AGL/164' MSL. Bldg beginning 857' from DER, 406' right of centerline, up to 33' AGL/179' MSL. Stack 891' from DER, 517' right of centerline, 33' AGL/168' MSL. Tree 894' from DER, 368' right of centerline, 31' AGL/150' MSL. Bush 903' from DER, 496' left of centerline, 65' AGL/121' MSL. Grd 908' from DER, 353' right of centerline, 118' MSL. Vehicle in parking lot 918' from DER, 524' right of centerline, 128' MSL. Bush beginning 938' from DER, 264' left of centerline, up to 53' AGL/109' MSL. Vehicle in parking lot 994' from DER, 588' right of centerline, 129' MSL. Grd beginning 1008' from DER, 490' right of centerline, up to 128' MSL. Bush 1084' from DER, 173' right of centerline, 26' AGL/111' MSL. Pole 1086' from DER, 434' right of centerline, 28' AGL/162' MSL. Grd 1116' from DER, 710' right of centerline, 126' MSL. Bldg 1123' from DER, 604' right of centerline, 36' AGL/167' MSL. Bush beginning 1144' from DER, 164' right of centerline, up to 17' AGL/145' MSL. Grd beginning 1200' from DER, 280' right of centerline, up to 129' MSL. Bush beginning 1253' from DER, 183' left of centerline, up to 19' AGL/146' MSL. Pole 1407' from DER, 480' right of centerline, 16' AGL/149' MSL. Grd 1414' from DER, 597' right of centerline, 126' MSL. Trail beginning 1438' from DER, 333' right of centerline, up to 135' MSL. Bush beginning 1484' from DER, 281' right of centerline, up to 52' AGL/184' MSL.

12 OCT 2017 to 09 NOV 2017

12 OCT 2017 to 09 NOV 2017

TAKEOFF MINIMUMS, (OBSTACLE) DEPARTURE PROCEDURES, AND DIVERSE VECTOR AREA (RADAR VECTORS)

17285

NE-1

TAKEOFF MINIMUMS, (OBSTACLE) DEPARTURE PROCEDURES, AND DIVERSE VECTOR AREA (RADAR VECTORS)

17285

BEVERLY, MA (CON'T)

Rwy 16, Grd beginning 1553' from DER, 429' right of centerline, up to 124' MSL. Bush beginning 1643' from DER, 243' right of centerline, up to 76' AGL/126' MSL. Bush beginning 1702' from DER, 587' right of centerline, up to 57' AGL/192' MSL. Tree 1711' from DER, 692' right of centerline, 73' AGL/193' MSL. Bush 1732' from DER, 721' left of centerline, 75' AGL/126' MSL. Grd beginning 1763' from DER, 448' right of centerline, up to 137' MSL. Bush beginning 1776' from DER, 305' right of centerline, up to 5' AGL/132' MSL. Lt pole 1821' from DER, 192' right of centerline, 31' AGL/139' MSL. Bush beginning 1898' from DER, 92' right of centerline, up to 30' AGL/138' MSL. Lt pole beginning 1949' from DER, 65' right of centerline, up to 31' AGL/139' MSL. Bldg 2021' from DER, 427' right of centerline, 24' AGL/133' MSL. Lt pole, beginning 2036' from DER, 44' left of centerline, up to 31' AGL/139' MSL. Bldg 2098' from DER, 381' right of centerline, 39' AGL/148' MSL. Lt pole 2129' from DER, 8' left of centerline, 31' AGL/136' MSL. Bldg beginning 2182' from DER, 241' right of centerline, up to 42' AGL/151' MSL. Smoke stk 2497' from DER, 356' right of centerline, 53' AGL/162' MSL. Bldg beginning 2533' from DER, 354' right of centerline, up to 58' AGL/165' MSL. Bush beginning 2860' from DER, 613' right of centerline, up to 61' AGL/162' MSL. Bldg beginning 2909' from DER, 973' right of centerline, up to 56' AGL/156' MSL. Bush beginning 3293' from DER, 1086' right of centerline, up to 72' AGL/166' MSL. **Rwy 27**, bush 44' from DER, 439' left of centerline, 26' AGL/82' MSL. Trees beginning 182' from DER, 229' left of centerline, up to 16' AGL/81' MSL. Bush 214' from DER, 463' left of centerline, 49' AGL/98' MSL. Tree 243' from DER, 318' right of centerline, 15' AGL/83' MSL. Bushes beginning 279' from DER, 270' left of centerline, up to 31' AGL/92' MSL. Tree 419' from DER, 119' left of centerline, 43' AGL/92' MSL. Bush 455' from DER, 463' left of centerline, 62' AGL/100' MSL. Trees beginning 456' from DER, 109' right of centerline, up to 55' AGL/99' MSL. Bushes beginning 500' from DER, 46' right of centerline, up to 53' AGL/96' MSL. Trees beginning 535' from DER, 249' right of centerline, up to 62' AGL/110' MSL. Bushes beginning 547' from DER, 26' right of centerline, up to 56' AGL/92' MSL. Tree 1170' from DER, 587' left of centerline, 82' AGL/111' MSL. Bushes beginning 1202' from DER, 248' left of centerline, up to 85' AGL/114' MSL. Bushes 2376' from DER, 653' right of centerline, 85' AGL/136' MSL. Bush beginning 2394' from DER, 451' right of centerline, up to 86' AGL/137' MSL. bush beginning 2563' from DER, 1037' right of centerline, up to 85' AGL/140' MSL. Bush beginning 2953' from DER, 958' right of centerline, up to 82' AGL/168' MSL. Tree beginning 3041' from DER, 762' right of centerline, up to 103' AGL/160' MSL. Bush beginning 3194' from DER, 1165' right of centerline, up to 91' AGL/190' MSL. Tree 3232' from DER, 723' right of centerline, 97' AGL/157' MSL. Bush beginning 3321' from DER, 1083' right of centerline, up to 89' AGL/185' MSL. Bushes beginning 4347' from DER, 954' left of centerline, up to 82' AGL/201' MSL. Bushes 4628' from DER, 1523' left of centerline, 86' AGL/202' MSL. Bushes beginning 4659' from DER, 924' left of centerline, up to 82' AGL/208' MSL. Bldgs beginning 5490' from DER, 530' left of centerline, up to 108' AGL/217' MSL.

BEVERLY, MA (CON'T)

Rwy 34, Nt MALS 11' from DER, on centerline, 2' AGL/109' MSL. Bush 41' from DER, 270' right of centerline, 18' AGL/119' MSL. Bush beginning 108' from DER, 399' right of centerline, up to 41' AGL/128' MSL. Bush 276' from DER, 518' right of centerline, 66' AGL/145' MSL. Bush 405' from DER, 452' right of centerline, 68' AGL/148' MSL. Tree 431' from DER, 580' left of centerline, 58' AGL/152' MSL. Tree 460' from DER, 582' left of centerline, 63' AGL/156' MSL. Bush beginning 461' from DER, 526' left of centerline, up to 63' AGL/154' MSL. Tree 695' from DER, 338' left of centerline, 40' AGL/142' MSL. Bush beginning 698' from DER, 282' left of centerline, up to 50' AGL/153' MSL. Tree 905' from DER, 222' left of centerline, 39' AGL/141' MSL. Bush beginning 940' from DER, 214' left of centerline, up to 34' AGL/135' MSL. Tree 1032' from DER, 700' right of centerline, 86' AGL/174' MSL. Bush beginning 1034' from DER, 89' right of centerline, up to 91' AGL/173' MSL. Bush beginning 1238' from DER, 300' right of centerline, up to 96' AGL/182' MSL. Pole, beginning 1309' from DER, 1' right of centerline, up to 9' AGL/158' MSL. Tree 1622' from DER, 214' right of centerline, 78' AGL/167' MSL. Bush beginning 1662' from DER, 458' right of centerline, up to 81' AGL/153' MSL. Tree 1682' from DER, 499' left of centerline, 80' AGL/165' MSL. Bush beginning 1686' from DER, 50' left of centerline, up to 71' AGL/166' MSL. Tree 1911' from DER, 427' left of centerline, 79' AGL/164' MSL. Bush beginning 1923' from DER, 22' left of centerline, up to 83' AGL/160' MSL.

BIDDEFORD, ME

BIDDEFORD MUNI (B19)

TAKEOFF MINIMUMS AND (OBSTACLE) DEPARTURE PROCEDURES

ORIG 07298 (FAA)

TAKEOFF MINIMUMS: **Rwy 24**, 300-2 or std. w/ min. climb of 214' per NM to 600, or alternatively, w/ std. takeoff minimums and normal 200'/NM climb gradient, takeoff must occur no later than 1700 prior to DER.

TAKEOFF OBSTACLE NOTES: **Rwy 6**, multiple trees beginning 121' from DER, 243' left of centerline, up to 60' AGL/229' MSL. Multiple trees beginning 23' from DER, 132' right of centerline, up to 60' AGL/219' MSL. Multiple trees beginning 538' from DER, 6' right of centerline, up to 60' AGL/229' MSL. **Rwy 24**, multiple trees beginning 342' from DER, 287' left of centerline, up to 60' AGL/219' MSL. Multiple trees beginning 492' from DER, 242' right of centerline, up to 60' AGL/209' MSL. Multiple trees beginning 1317' from DER, 44' right of centerline, up to 60' AGL/209' MSL. Assumed obstacle 1.7 NM from DER, 1802' right of centerline, 200' AGL/429' MSL.

BLOCK ISLAND, RI

BLOCK ISLAND STATE (BID)

TAKEOFF MINIMUMS AND (OBSTACLE) DEPARTURE PROCEDURES

AMDT 3 10042 (FAA)

TAKEOFF OBSTACLE NOTES: **Rwy 10**, bush 136' from DER, 183' left of centerline, 9' AGL/110' MSL. Tower 2736' from DER, 1203' left of centerline, 167' AGL/210' MSL. **Rwy 28**, buildings with chimneys beginning 1105' from DER, 8' left of centerline, up to 30' AGL/196' MSL. Trees beginning 3' from DER, 4' left of centerline, up to 87' AGL/189' MSL. Trees beginning 380' from DER, 70' left of centerline, up to 78' AGL/186' MSL. Windmill with antennas 3437' from DER, 1005' right of centerline, 72' AGL/257' MSL.

12 OCT 2017 to 09 NOV 2017

12 OCT 2017 to 09 NOV 2017

TAKEOFF MINIMUMS, (OBSTACLE) DEPARTURE PROCEDURES, AND DIVERSE VECTOR AREA (RADAR VECTORS)

17285

NE-1

TAKEOFF MINIMUMS, (OBSTACLE) DEPARTURE PROCEDURES, AND DIVERSE VECTOR AREA (RADAR VECTORS)

17285

BOSTON, MA

GENERAL EDWARD LAWRENCE LOGAN INTL
(BOS)

TAKEOFF MINIMUMS AND (OBSTACLE)
DEPARTURE PROCEDURES

AMDT 14A 17285 (FAA)

TAKEOFF MINIMUMS: **Rwy 32, 33R**, NA - environmental. **Rwy 4L**, 300-1' or std. w/min. climb of 358' per NM to 300. **Rwy 9**, 300-1½' or std. w/min. climb of 272' per NM to 300. **Rwy 14**, 300-1¼' or std. w/min. climb of 225' per NM to 300, or alternatively, with std. takeoff minimums and a normal 200' per NM climb gradient, takeoff must occur no later than 1600' prior to DER. **Rwy 22L**, 300-1' or std. if tower reports no tall vessels in the departure area. **Rwy 22R**, 400-1¼' or std. w/min. climb of 320' per NM to 500. **Rwy 27**, std. w/min. climb of 477' per NM to 1300. **Rwy 33L**, 300-1¼' or std. w/min. climb of 224' per NM to 400, or alternatively, with std. takeoff minimums and a normal 200' per NM climb gradient, takeoff must occur no later than 1900' prior to DER.

DEPARTURE PROCEDURE: **Rwy 4L**, climb on a heading between 291° CW to 214° from DER, or min. climb of 210' per NM to 1100 for all other courses. **Rwy 14**, climb on a heading between 321° CW to 257° from DER, or min. climb of 236' per NM to 1100 for all other courses. **Rwy 22L**, climb heading 215° to 800 before turning right. **Rwy 22R**, climb heading 215° to 900 before turning right. **Rwy 33L**, climb heading 330° to 700 before turning left.

TAKEOFF OBSTACLE NOTES: **Rwy 4L**, ships beginning 693' from DER, on centerline, up to 50' AGL/50' MSL. Tower and pole beginning 1803' from DER, 701' right of centerline, up to 56' AGL/68' MSL. Trees beginning 2278' from DER, 678' right of centerline, up to 57' AGL/77' MSL. Tree 2091' from DER, 91' left of centerline, 47' AGL/77' MSL. Building and trees beginning 3972' from DER, 543' left of centerline, up to 50' AGL/198' MSL. **Rwy 4R**, ships beginning 578' from DER, on centerline, up to 56' AGL/50' MSL. Trees, pole, and tower beginning 1807' from DER, 382' left of centerline, up to 30' AGL/68' MSL. Trees beginning 2282' from DER, 691' left of centerline, up to 57' AGL/77' MSL. **Rwy 9**, ships beginning 761' from DER, on centerline, up to 65' AGL/65' MSL. Tank and obstacle light beginning 5883' from DER, 1453' left of centerline, up to 120' AGL/217' MSL. **Rwy 14**, terrain 77' from DER, 454' left of centerline, 23' MSL. Building and ASR 462' from DER, 324' left of centerline, 36' AGL/73' MSL. Ship rig 5438' from DER, 1825' right of centerline, 176' AGL/176' MSL. **Rwy 15L**, sign 169' from DER, 278' right of centerline, 8' AGL/19' MSL. **Rwy 15R**, sign 45' from DER, 267' right of centerline, 15' AGL/16' MSL. **Rwy 22L**, pole 394' from DER, on centerline, 15' AGL/31' MSL. Ship rig 2440' from DER, 34' left of centerline, 176' AGL/176' MSL. Tower and light 3585' from DER, 926' left of centerline, 114' AGL/128' MSL. Cranes beginning 3675' from DER, 439' right of centerline, up to 146' AGL/146' MSL. **Rwy 22R**, ship rig 4064' from DER, 8' right of centerline, 176' AGL/176' MSL. Stack 1.4 NM from DER, 2755' right of centerline, 250' AGL/265' MSL. **Rwy 27**, light pole and rod beginning 1690' from DER, 750' right of centerline, up to 86' AGL/102' MSL. Buildings beginning 1.2 NM from DER, 126' left of centerline, up to 251' AGL/261' MSL. Buildings beginning 1.4 NM from DER, 1166' right of centerline, up to 261' AGL/274' MSL. Buildings beginning 1.6 NM from DER, 2654' right of centerline, up to 548' AGL/560' MSL. Buildings beginning 1.7 NM from DER, 1532' right of centerline, up to 620' AGL/643' MSL. Buildings beginning 1.93 NM from DER, 1507' right of centerline, up to 685' AGL/709' MSL. **Rwy 33L**, tree 248' from DER, 377' right of centerline, 16' AGL/27' MSL. Wind indicator 1403' from DER, 322' right of centerline, 19' AGL/59' MSL. Light on building and rod on tank beginning 1677' from DER, 603' left of centerline, up to 58' AGL/73' MSL. Trees beginning 2072' from DER, 51' right of centerline, up to 72' AGL/94' MSL. Sign 3015' from DER, 1123' right of centerline, 73' AGL/101' MSL. Tree 4001' from DER, 578' left of centerline, 43' AGL/119' MSL. Buildings 4363' from DER, 1082' left of centerline, 64' AGL/129' MSL. Building 5080' from DER, 1494' left of centerline, 71' AGL/149' MSL. Light on bridge 1.4 NM from DER, 2566' left of centerline, 262' AGL/262' MSL.

BOSTON, MA (CON'T)

GENERAL EDWARD LAWRENCE
LOGAN INTL (CONT.)

DIVERSE VECTOR AREA (RADAR
VECTORS)

ORIG 16119 (FAA)

Rwy 14, heading as assigned by ATC; requires minimum climb of 240' per NM to 1100. **Rwy 22L**, heading as assigned by ATC; requires minimum climb of 330' per NM to 1200. **Rwy 22R**, heading as assigned by ATC; requires minimum climb of 310' per NM to 500. **Rwy 33L**, heading as assigned by ATC; requires minimum climb of 300' per NM to 1200.

BRIDGEPORT, CT

IGOR I. SIKORSKY MEMORIAL
(BDR)

TAKEOFF MINIMUMS AND (OBSTACLE)
DEPARTURE PROCEDURES

AMDT 5 11293 (FAA)

TAKEOFF MINIMUMS: **Rwy 29**, 600-2¾' or std. w/min. climb of 300' per NM to 700.

TAKEOFF OBSTACLE NOTES: **Rwy 6**, fence 14' from DER, 95' left of centerline, 17' AGL/18' MSL. Vehicles on road beginning 79' from DER, 1' right of centerline, up to 15' AGL/25' MSL. **Rwy 11**, vehicles on road beginning 195' from DER, 127' left of centerline, up to 15' AGL/28' MSL. Vehicles on road and poles beginning 207' from DER, 6' right of centerline, up to 73' AGL/73' MSL. **Rwy 24**, vehicles on road beginning 484' from DER, 537' right of centerline, up to 15' AGL/25' MSL. **Rwy 29**, building 555' from DER, 622' right of centerline, 57' AGL/59' MSL. Stack 2.2 NM from DER, 275' left of centerline, 497' AGL/512' MSL.

BRUNSWICK, ME

BRUNSWICK EXECUTIVE (BXM)

TAKEOFF MINIMUMS AND (OBSTACLE)
DEPARTURE PROCEDURES

ORIG 11237 (FAA)

TAKEOFF OBSTACLE NOTES: **Rwy 1L**, tree 2018' from DER, 943' right of centerline, 100' AGL/159' MSL. Trees beginning 2272' from DER, 335' left of centerline, up to 100' AGL/159' MSL. **Rwy 1R**, tree 1985' from DER, 345' right of centerline, 100' AGL/156' MSL. Tree 2823' from DER, 1045' left of centerline, 100' AGL/159' MSL. **Rwy 19L**, trees beginning 2170' from DER, 457' left of centerline, up to 100' AGL/179' MSL. Tree 2136' from DER, 498' right of centerline, 100' AGL/169' MSL. **Rwy 19R**, trees beginning 2137' from DER, 201' left of centerline, up to 100' AGL/179' MSL.

TAKEOFF MINIMUMS, (OBSTACLE) DEPARTURE PROCEDURES, AND DIVERSE VECTOR AREA (RADAR VECTORS)

17285

NE-1

12 OCT 2017 to 09 NOV 2017

12 OCT 2017 to 09 NOV 2017

**TAKEOFF MINIMUMS, (OBSTACLE) DEPARTURE PROCEDURES, AND
DIVERSE VECTOR AREA (RADAR VECTORS)**

17285

BURLINGTON, VT

BURLINGTON INTL (BTW)

TAKEOFF MINIMUMS AND (OBSTACLE)
DEPARTURE PROCEDURES
AMDT 13 10210 (FAA)

TAKEOFF MINIMUMS: **Rwy 1**, std. w/ min. climb of 290' per NM to 3200 or 3000-3 for climb in visual conditions. **Rwy 15**, std. w/ min. climb of 375' per NM to 5900 or 3000-3 for climb in visual conditions. **Rwy 19**, std. w/ min. climb of 290' per NM to 5300 or 3000-3 for climb in visual conditions. **Rwy 33**, std. w/ min. climb of 210' per NM to 2400 or 3000-3 for climb in visual conditions.

DEPARTURE PROCEDURE: **Rwy 1**, climb heading 006° to 3200 before proceeding on course or for climb in visual conditions cross Burlington Intl airport at or above 3200 before proceeding on course. **Rwy 15**, for climb in visual conditions cross Burlington Intl airport at or above 3200 before proceeding on course. **Rwy 19**, climb heading 186° to 3200 before proceeding on course or for climb in visual conditions cross Burlington Intl airport at or above 3200 before proceeding on course. **Rwy 33**, climb heading 326° to 2400 before proceeding on course or for climb in visual conditions cross Burlington Intl airport at or above 3200 before proceeding on course.

TAKEOFF OBSTACLE NOTES: **Rwy 1**, trees beginning 1396' from DER, 216' right of centerline, up to 64' AGL/384' MSL trees 1694' from DER, 200' left of centerline, up to 80' AGL/380' MSL. **Rwy 15**, bush 318' from DER, 292' left of centerline, up to 23' AGL/343' MSL. Trees beginning 1418' from DER, 358' right of centerline, up to 27 feet AGL/387' MSL. Hopper and trees beginning 1801' from DER, 377' left of centerline, up to 63' AGL/403' MSL. Building 3453' from DER, 1145' left of centerline, 110' AGL/430' MSL. **Rwy 19**, trees beginning 168' from DER, 24' right of centerline, up to 56' AGL/436' MSL. Trees beginning 172' from DER, 184' left of centerline, up to 93' AGL/413' MSL. **Rwy 33**, pole and trees beginning 971' from DER, 755' left of centerline, up to 97' AGL/357' MSL. Trees 1091' from DER, 590' right of centerline, up to 34' AGL/334' MSL.

CARIBOU, ME

CARIBOU MUNI (CAR)

TAKEOFF MINIMUMS AND (OBSTACLE)
DEPARTURE PROCEDURES
AMDT 1 95061 (FAA)

TAKEOFF MINIMUMS: **Rwys 1, 11, 19, 29**, 300-1.

CARRABASSETT, ME

SUGARLOAF RGNL (B21)

TAKEOFF MINIMUMS AND (OBSTACLE)
DEPARTURE PROCEDURES
ORIG 17285 (FAA)

TAKEOFF MINIMUMS: **Rwy 17**, 1200-3 w/min. climb of 530' per NM to 4700 or 3800-3 for climb in visual conditions. **Rwy 35**, 3800-3 for climb in visual conditions. DEPARTURE PROCEDURE: **Rwy 17**, climb heading 173° to 4700 before proceeding on course.

VCOA: Obtain ATC approval for VCOA when requesting IFR clearance. Climb in visual conditions to cross Sugarloaf Rgnl airport at or above 4500 before proceeding on course.

TAKEOFF OBSTACLE NOTES: **Rwy 17**, trees and terrain beginning 30' from DER, left and right of centerline, up to 100' AGL/970' MSL. Trees and terrain beginning 468' from DER, 19' right of centerline, up to 100' AGL/980' MSL. Trees and terrain beginning 2171' from DER, left and right of centerline, up to 100' AGL/1039' MSL. Trees and terrain beginning 4012' from DER, left and right of centerline, up to 100' AGL/1291' MSL. Trees and terrain beginning 1 NM from DER 456' left and right of centerline, up to 100' AGL/1593' MSL. Trees and terrain beginning 1.6 NM from DER, left and right of centerline, up to 100' AGL/1861' MSL. Trees and terrain beginning 2.75 NM from DER, 2831' left of centerline, up to 100' AGL/2020' MSL. Trees and terrain beginning 3 NM from DER, 1192' left of centerline, up to 100' AGL/1900' MSL. **Rwy 35**, trees and terrain beginning 38' from DER, left and right of course, up to 100' AGL/890' MSL. Trees and terrain beginning 495' from DER, 388' right of centerline, up to 100' AGL/909' MSL. Trees and terrain beginning 1128' from DER, 140' right of centerline, up to 100' AGL/1086' MSL. Trees and terrain beginning 4065' from DER, left and right of centerline, up to 100' AGL/1126' MSL. Trees and terrain beginning 4435' from DER, 44' left of centerline, up to 100' AGL/1319' MSL. Trees and terrain beginning 1 NM from DER, left and right of centerline, up to 100' AGL/1355' MSL. Trees and terrain beginning 1.1 NM from DER, left and right of centerline, up to 100' AGL/1392' MSL. Trees and terrain beginning 1.2 NM from DER, 199' left of centerline, up to 100' AGL/1398' MSL. Trees and terrain beginning 1.3 NM from DER, left and right of centerline, up to 100' AGL/1447' MSL. Trees and terrain beginning 1.4 NM from DER, left and right of centerline, up to 100' AGL/1474' MSL. Trees and terrain beginning 1.5 NM from DER, 233' left of centerline, up to 100' AGL/1477' MSL.

CHATHAM, MA

CHATHAM MUNI (CQX)

TAKEOFF MINIMUMS AND (OBSTACLE)
DEPARTURE PROCEDURES
ORIG 07298 (FAA)

TAKEOFF MINIMUMS: **Rwy 6**, 300-1 or std. w/ min. climb of 462' per NM to 300. **Rwy 24**, 400-2 or std. w/ min. climb of 248' per NM to 500.

TAKEOFF OBSTACLE NOTES: **Rwy 6**, multiple trees beginning 26' from DER, 158' left of centerline, up to 100' AGL/169' MSL. Multiple trees beginning 62' from DER, 245' right of centerline, up to 100' AGL/159' MSL. **Rwy 24**, multiple trees beginning 179' from DER, 216' left of centerline, up to 100' AGL/159' MSL. Multiple trees beginning 318' from DER, 227' right of centerline, up to 100' AGL/159' MSL. Tower 1.6 NM from DER, 2526' right of centerline, 313' AGL/318' MSL.

**TAKEOFF MINIMUMS, (OBSTACLE) DEPARTURE PROCEDURES, AND
DIVERSE VECTOR AREA (RADAR VECTORS)**

17285

NE-1

TAKEOFF MINIMUMS, (OBSTACLE) DEPARTURE PROCEDURES, AND DIVERSE VECTOR AREA (RADAR VECTORS)

17285

CHESTER, CT

CHESTER (SNC)

TAKEOFF MINIMUMS AND (OBSTACLE)
DEPARTURE PROCEDURES
ORIG 10322 (FAA)

TAKEOFF MINIMUMS: **Rwy 35**, 300-3 or std. w/min. climb of 285' per NM to 900.

TAKEOFF OBSTACLE NOTES: **Rwy 17**, trees beginning at DER, 350' left of centerline CW to 250' right of centerline, up to 100' AGL/449' MSL. **Rwy 35**, tree 6015' from DER, 586' right of centerline 100' AGL/609' MSL. Tree 1.7 NM from DER, 847' right of centerline 200' AGL/709' MSL. Tree line beginning 100' from DER, 250' left of centerline to 1000' right of centerline, up to 100' AGL/469' MSL.

CLAREMONT, NH

CLAREMONT MUNI (CNH)

TAKEOFF MINIMUMS AND (OBSTACLE)
DEPARTURE PROCEDURES
AMDT 2 05244 (FAA)

TAKEOFF MINIMUMS: **Rwy 11**, 700-3 or std. w/min. climb of 490' per NM to 1400, or 3100-2½ for climb in visual conditions. **Rwy 29**, 1300-3 or 3100-2½ for climb in visual conditions.

DEPARTURE PROCEDURE: **Rwys 11, 29**, climb in visual conditions to cross Claremont Muni at or above 3000.

TAKEOFF OBSTACLE NOTES: **Rwy 11**, multiple trees and towers on rising terrain, 1.5 NM from DER, 3000' right of centerline, and 1.6 NM from DER, 2660' left of centerline, up to 200' AGL/1143' MSL. **Rwy 29**, multiple trees on rising terrain, 1.1 NM from DER, 800' left of centerline, and 1.3 NM from DER, 2000' right of centerline, up to 80' AGL/1044' MSL. Trees and towers 2 NM from DER on centerline, up to 200' AGL/929' MSL.

CONCORD, NH

CONCORD MUNI (CON)

TAKEOFF MINIMUMS AND (OBSTACLE)
DEPARTURE PROCEDURES
AMDT 4 14149 (FAA)

TAKEOFF MINIMUMS: **Rwy 12**, std. w/min. climb of 305' per NM to 1000 or 1300-2½ for climb in visual conditions.

Rwy 17, 300-2¼ or std. w/min. climb of 260' per NM to 700. **Rwy 30**, std. w/min. climb of 235' per NM to 1200 or 1300-2½ for climb in visual conditions.

DEPARTURE PROCEDURE: **Rwy 12**, climb heading 121° to 800 then climbing right turn to CON VORTAC before proceeding on course, or for climb in visual conditions cross Concord Muni airport at or above 1500 before proceeding on course. When executing VCOA, notify ATC prior to departure. **Rwy 17**, climb heading 171° to 1000 before turning left. **Rwy 30**, climb heading 301° to 900 before proceeding on course, or for climb in visual conditions cross Concord Muni airport at or above 1500 before proceeding on course. When executing VCOA, notify ATC prior to departure. **Rwy 35**, climb heading 341° to 1200 before proceeding on course.

TAKEOFF OBSTACLE NOTES: **Rwy 12**, tree abeam DER, 267' left of centerline, 16' AGL/361' MSL. Tree 6' from DER, 353' right of centerline, 54' AGL/396' MSL. Trees beginning 88' from DER, 7' left of centerline, up to 69' AGL/391' MSL. Trees beginning 106' from DER, 100' right of centerline, up to 52' AGL/394' MSL. Pole 483' from DER, 324' right of centerline, 45' AGL/376' MSL. Trees beginning 1032' from DER, 131' left of centerline, up to 86' AGL/421' MSL. Trees beginning 1075' from DER, 207' right of centerline, up to 100' AGL/431' MSL. Tree 1.1NM from DER, 2142' right of centerline, 107' AGL/513' MSL. Tree beginning 1.5NM from DER, 2160' left of centerline, 76' AGL/622' MSL. **Rwy 17**, trees beginning 95' from DER, 285' left of centerline, up to 88' AGL/378' MSL. Trees beginning 984' from DER, 509' right of centerline, up to 77' AGL/406' MSL. Tree 1252' from DER, 658' left of centerline, 69' AGL/371' MSL. Trees beginning 1.3NM from DER, 1048' left of centerline, up to 102' AGL/618' MSL. Tower 1.6NM from DER, 2080' left of centerline, 90' AGL/607' MSL. **Rwy 30**, trees and poles beginning 554' from DER, 330' right of centerline, up to 59' AGL/400' MSL. Tower 613' from DER, 580' left of centerline, 38' AGL/378' MSL. Building 627' from DER, 184' right of centerline, 21' AGL/362' MSL. Trees beginning 1132' from DER, 271' left of centerline, up to 98' AGL/430' MSL. Tower 1177' from DER, 381' left of centerline, 47' AGL/385' MSL. Building 1190' from DER, 390' left of centerline, 41' AGL/379' MSL. Building 1734' from DER, 522' right of centerline, 60' AGL/399' MSL. Trees beginning 1893' from DER, 126' left of centerline, up to 112' AGL/442' MSL. Trees beginning 2108' from DER, 47' right of centerline, up to 105' AGL/437' MSL. **Rwy 35**, fence 259' from DER, 492' left of centerline, 8' AGL/348' MSL. Vehicle on road beginning 276' from DER, 91' left of centerline, 15' AGL/372' MSL. Buildings beginning 296' from DER, 256' left of centerline, up to 21' AGL/362' MSL. Trees beginning 409' from DER, 60' left of centerline, up to 62' AGL/403' MSL. Trees beginning 539' from DER, 17' right of centerline, up to 72' AGL/415' MSL. Poles beginning 643' from DER, 53' right of centerline, up to 34' AGL/376' MSL. Poles beginning 703' from DER, 276' left of centerline, up to 41' AGL/381' MSL. Trees beginning 1142' from DER, 20' left of centerline, up to 102' AGL/440' MSL. Trees beginning 1298' from DER, 39' right of centerline, up to 87' AGL/430' MSL.

12 OCT 2017 to 09 NOV 2017

12 OCT 2017 to 09 NOV 2017

TAKEOFF MINIMUMS, (OBSTACLE) DEPARTURE PROCEDURES, AND DIVERSE VECTOR AREA (RADAR VECTORS)

17285

NE-1

TAKEOFF MINIMUMS, (OBSTACLE) DEPARTURE PROCEDURES, AND DIVERSE VECTOR AREA (RADAR VECTORS)

17285

DANBURY, CT

DANBURY MUNI (DXR)

TAKEOFF MINIMUMS AND (OBSTACLE)

DEPARTURE PROCEDURES

AMDT 4 12124 (FAA)

TAKE OFF MINIMUMS: **Rwy 17**, NA - terrain. **Rwy 8**, 600-2. **Rwy 26**, 600-2½. **Rwy 35**, std. w/min. climb of 470' per NM to 1100 or 1200-2½ for climb in visual conditions.

DEPARTURE PROCEDURE: **Rwy 8**, climb heading 084° to 1200 before turning. **Rwy 26**, climb heading 264° to 1300 before turning. **Rwy 35**, for climb in visual conditions, cross Danbury Muni at or above 1500 before proceeding on course. When executing VCOA, notify ATC prior to departure.

TAKEOFF OBSTACLE NOTES: **Rwy 8**, vehicles on roadway 93' from DER, 228' right of centerline, up to 15' AGL/480' MSL. Pole 308' from DER, 185' right of centerline, 39' AGL/505' MSL. Buildings beginning 316' from DER, 366' left of centerline, up to 35' AGL/499' MSL. Pole 691' from DER, 150' right of centerline, 56' AGL/524' MSL. Pole 885' from DER, 333' left of centerline, 62' AGL/532' MSL. Building 1876' from DER, 520' left of centerline, 61' AGL/646' MSL. Pole 2017' from DER, 201' right of centerline, 96' AGL/701' MSL. Trees and pole beginning 2372' from DER, 28' right of centerline, up to 105' AGL/799' MSL. Building 1.5 NM from DER, 786' right of centerline, 118' AGL/722' MSL. Tower 1.5 NM from DER, 2377' right of centerline, 275' AGL/1015' MSL. **Rwy 26**, terrain 85' from DER, 240' left of centerline, 461' MSL. Trees beginning 1543' from DER, 910' left of centerline, up to 100' AGL/959' MSL. Pole 1.2 NM from DER, 915' left of centerline, 100' AGL/709' MSL. Pole 2 NM from DER, 1375' left of centerline, 82' AGL/825' MSL. **Rwy 35**, fence 43' from DER, 59' left of centerline, 18' AGL/458' MSL. Vehicles on roadway 77' from DER, left and right of centerline, up to 15' AGL/467' MSL. Poles beginning 416' from DER, left and right of centerline, up to 72' AGL/505' MSL. Building 916' from DER, 462' right of centerline, 95' AGL/521' MSL. Trees beginning 1.3 NM from DER, 427' right of centerline, up to 100' AGL/839' MSL. Building 1.2 NM from DER, 695' right of centerline, 62' AGL/722' MSL. Building 1.4 NM from DER, 187' right of centerline, 59' AGL/758' MSL.

DANIELSON, CT

DANIELSON (LZD)

TAKEOFF MINIMUMS AND (OBSTACLE)

DEPARTURE PROCEDURES

AMDT 3 93231 (FAA)

TAKEOFF MINIMUMS: **Rwy 13**, 700-2 or std. with a min. climb of 300' per NM to 1100.

DEPARTURE PROCEDURE: **Rwy 13**, climb to 1100 before turning on course. **Rwy 31**, climb to 1000 feet before turning on course.

DEXTER, ME

DEXTER RGNL (1B0)

TAKEOFF MINIMUMS AND (OBSTACLE)

DEPARTURE PROCEDURES

AMDT 1 12096 (FAA)

TAKEOFF MINIMUMS: **Rwys 7, 25**, NA, Turf. **Rwy 34**, 600 -2½ or std. w/min. climb of 355' per NM to 1200.

DEPARTURE PROCEDURE: **Rwy 16**, climb heading 157° to 1200 before turning northeast bound. **Rwy 34**, climb heading 337° to 1300 before proceeding on course.

TAKEOFF OBSTACLE NOTES: **Rwy 16**, trees, power lines, vehicles, and buildings beginning 105' from DER, left and right of centerline, up to 100' AGL/629' MSL. **Rwy 34**, trees beginning 53' from DER, left and right of centerline, up to 100' AGL/619' MSL.

EASTPORT, ME

EASTPORT MUNI (EPM)

TAKEOFF MINIMUMS AND (OBSTACLE)

DEPARTURE PROCEDURES

ORIG 94174 (FAA)

TAKEOFF MINIMUMS: **Rwy 33**, 300-1 or std. with a min. climb of 240' per NM to 300.

ELIOT, ME

LITTLEBROOK AIR PARK (3B4)

TAKEOFF MINIMUMS AND (OBSTACLE)

DEPARTURE PROCEDURES

ORIG 03247 (FAA)

TAKEOFF OBSTACLE NOTES: **Rwy 12**, house 118' right of DER, 23' AGL/129' MSL. Brush 200' from DER, 66' left of centerline, 16' AGL/122' MSL. Trees 345' from DER, 140' left of centerline, 71' AGL/130' MSL. **Rwy 30**, trees 220' from DER, 125' right of centerline, 19' AGL/144' MSL. Brush 100' right of DER, 20' AGL/159' MSL.

FITCHBURG, MA

FITCHBURG MUNI (FIT)

TAKEOFF MINIMUMS AND (OBSTACLE)

DEPARTURE PROCEDURES

AMDT 5 05244 (FAA)

TAKEOFF MINIMUMS: **Rwys 2, 14, 20**, NA-obstacles.

Rwy 32, std. with a min. climb of 314' per NM to 1600, or 1500-2½ for climb in visual conditions.

DEPARTURE PROCEDURE: **Rwy 32**, climb via heading 324° to 2600 before proceeding on course. For climb in visual conditions: cross Fitchburg Muni Airport at or above 1800.

TAKEOFF OBSTACLE NOTES: **Rwy 32**, multiple trees beginning 144' from DER, 260' left of centerline up to 100' AGL/796' MSL, multiple trees beginning 36' from DER, 150' right of centerline up to 100' AGL/796' MSL.

FRENCHVILLE, ME

NORTHERN AROOSTOOK RGNL (FVE)

TAKEOFF MINIMUMS AND (OBSTACLE)

DEPARTURE PROCEDURES

ORIG 07298 (FAA)

TAKEOFF MINIMUMS: **Rwy 32**, 300-1¼ or std. w/ min. climb of 503' per NM to 1300.

TAKEOFF OBSTACLE NOTES: **Rwy 14**, trees beginning 101' from DER, 348' right of centerline, up to 80' AGL/1079' MSL. **Rwy 32**, trees beginning 3128' from DER, 952' left of centerline, up to 80' AGL/1179' MSL, trees beginning 1608' from DER, 433' right of centerline, up to 80' AGL/1119' MSL.

TAKEOFF MINIMUMS, (OBSTACLE) DEPARTURE PROCEDURES, AND DIVERSE VECTOR AREA (RADAR VECTORS)

17285

NE-1

**TAKEOFF MINIMUMS, (OBSTACLE) DEPARTURE PROCEDURES, AND
DIVERSE VECTOR AREA (RADAR VECTORS)**

17285

FRYEBURG, ME

EASTERN SLOPES RGNL (IZG)
TAKEOFF MINIMUMS AND (OBSTACLE)
DEPARTURE PROCEDURES
AMDT 4A 10070 (FAA)

TAKEOFF MINIMUMS: **Rwy 14**, std. with a min. climb of 310' per NM to 2100, or 1600-3 for climb in visual conditions. **Rwy 32**, 2200-2 with a min. climb of 471' per NM to 6600.

DEPARTURE PROCEDURE: **Rwy 14**, climb heading 143° to 3000 before turning. For climb in visual conditions cross Eastern Slopes Rgnl airport at or above 3800 before proceeding on course. **Rwy 32**, for climb in visual conditions cross Eastern Slopes Rgnl airport at or above 3800 before proceeding on course.

TAKEOFF OBSTACLE NOTES: **Rwy 32**, tree 454' from DER, 558' left of centerline, 100' AGL/579' MSL. Trees beginning 1249' from DER, 734' right of centerline, up to 100' AGL/659' MSL. Trees and tower beginning 1.1 NM from DER, 2155' left of centerline, up to 100' AGL/1139' MSL.

GARDNER, MA

GARDNER MUNI (GDM)
TAKEOFF MINIMUMS AND (OBSTACLE)
DEPARTURE PROCEDURES
AMDT 3 13010 (FAA)

TAKEOFF-MINIMUMS: **Rwys 18, 36**, 1000-2½ for climb in visual conditions.

DEPARTURE PROCEDURE: **Rwys 18, 36**, for climb in visual conditions, cross Gardner Muni airport at or above 1900 before proceeding on course. When executing VCOA, notify ATC prior to departure.

TAKEOFF OBSTACLE NOTES: **Rwy 18**, trees beginning 3' from DER, 470' right of centerline, up to 100' AGL/1183' MSL. Trees beginning 58' from DER, 172' left of centerline, up to 100' AGL/1183' MSL. Trees beginning 1.0 NM from DER, 1579' left of centerline, up to 100' AGL/1229' MSL. Trees beginning 1.3 NM from DER, 2535' right of centerline, up to 100' AGL/1163' MSL. **Rwy 36**, trees beginning 130' from DER, 260' right of centerline, up to 100' AGL/1091' MSL. Trees beginning 159' from DER, 436' left of centerline, up to 100' AGL/1104' MSL.

GREAT BARRINGTON, MA

WALTER J KOLADZA (GBR)
TAKEOFF MINIMUMS AND (OBSTACLE)
DEPARTURE PROCEDURES
AMDT 3 13122 (FAA)

TAKEOFF MINIMUMS: **Rwy 11**, std. w/ min. climb of 570' per NM to 2500' or 2300-3 for climb in visual conditions. **Rwy 29**, std. w/ min. climb of 405' per NM to 2600' or 2300-3 for climb in visual conditions.

DEPARTURE PROCEDURE: **Rwy 11**, climb heading 110° to 2500 before proceeding on course or for climb in visual conditions: cross Walter J. Koladza airport at or above 2900 MSL before proceeding on course. When executing VCOA, notify ATC prior to departure. **Rwy 29**, climb heading 290° to 2600 before proceeding on course or for climb in visual conditions: cross Walter J. Koladza airport at or above 2900 MSL before proceeding on course. When executing VCOA, notify ATC prior to departure.

TAKEOFF OBSTACLE NOTES: **Rwy 11**, vehicles beginning 5' from DER, from 253' left to 531' right of centerline, up to 15' AGL/740' MSL. Trees beginning 55' from DER, from 282' left of centerline to 898' left of centerline, up to 100' AGL/ 854' MSL. Trees beginning 505' from DER, 496' right of centerline, up to 100' AGL/ 854' MSL. Trees beginning 1337' from DER, 91' right of centerline, up to 100' AGL/ 874' MSL. Vehicles beginning at 1635' from DER, from 951' left to 926' right of centerline, up to 15' AGL/ 740' MSL. **Rwy 29**, vehicles beginning 16' from DER, 471' left of centerline to 1815' right of centerline, up to 15' AGL/ 864' MSL. Trees beginning 19' from DER, from 249' to 1532' right of centerline, up to 100' AGL/ 844' MSL. Trees beginning 19' from DER, from 495' to 2608' left of centerline, up to 100' AGL/ 844' MSL. Trees beginning 496' from DER, 495' left of centerline, up to 100' AGL/844' MSL. Trees beginning 250' from DER, 249' right of centerline, up to 100' AGL/844' MSL. Trees beginning 429' from DER, 17' left of centerline, up to 100' AGL/ 834' MSL. Vehicles beginning at 1562' from DER, from 897' left to 826' right of centerline, up to 15' AGL/759' MSL. Trees beginning 1650' from DER, 154' right of centerline, up to 100' AGL/844' MSL.

12 OCT 2017 to 09 NOV 2017

12 OCT 2017 to 09 NOV 2017

**TAKEOFF MINIMUMS, (OBSTACLE) DEPARTURE PROCEDURES, AND
DIVERSE VECTOR AREA (RADAR VECTORS)**

17285

NE-1

TAKEOFF MINIMUMS, (OBSTACLE) DEPARTURE PROCEDURES, AND DIVERSE VECTOR AREA (RADAR VECTORS)

17285

GREENVILLE, ME

GREENVILLE MUNI (3B1)
TAKEOFF MINIMUMS AND (OBSTACLE)
DEPARTURE PROCEDURES
AMDT 1 94202 (FAA)

TAKEOFF MINIMUMS: **Rwy 3**, 1000-3.

Rwys 21, 32, 300-1.

DEPARTURE PROCEDURE: **Rwy 3**, climbing left turn heading 005° to 3000 before proceeding on course.

Rwys 14, 21, climb runway heading to 3000 before proceeding on course. **Rwy 32**, climbing right turn heading 005° to 3000 before proceeding on course.

GREENVILLE (52B)

TAKEOFF MINIMUMS AND (OBSTACLE)
DEPARTURE PROCEDURES
AMDT 3 14205 (FAA)

TAKEOFF MINIMUMS: **Sea Lane 14**, std. w/min. climb of 849' per NM to 2200 or 500-2½ w/min. climb of 280' per NM to 2600 or 3900-3 for climb in visual conditions.

Sea Lane 18, std. w/min. climb of 370' per NM to 2800 or 3900-3 for climb in visual conditions. **Sea Lane 32**, std. w/min. climb of 685' per NM to 2500 or 700-1½ w/min. climb of 300' per NM to 4000 or 3900-3 for climb in visual conditions. **Sea Lane 36**, std. w/min. climb of 270' per NM to 3300 or 3900-3 for climb in visual conditions.

DEPARTURE PROCEDURE: **Sea Lane 14**, climb on heading 140° to 3300 before proceeding on course or for climb in visual conditions: cross Greenville at or above 3800 MSL before proceeding on course. **Sea Lane 18**, climb heading 180° to 2800 before proceeding on course or for climb in visual conditions: cross Greenville at or above 3800 MSL before proceeding on course. **Sea Lane 32**, climb on heading 335° to 4000 before proceeding on course or for climb in visual conditions: cross Greenville at or above 3800 MSL before proceeding on course. **Sea Lane 36**, climb heading 360° to 3600 before proceeding on course or for climb in visual conditions: cross Greenville at or above 3800 MSL before proceeding on course.

TAKEOFF OBSTACLE NOTES: **Sea Lane 14**, trees beginning 4116' prior to DER, 296' left of centerline, up to 80' AGL/1119' MSL. Trees beginning 3063' prior to DER, 191' right of centerline, up to 80' AGL/1159' MSL. Boats beginning at DER, from 500' left to 500' right of centerline, up to 20' AGL/1048' MSL. Trees beginning 2' from DER, 167' left of centerline, up to 80' AGL/1179' MSL. **Sea Lane 18**, trees beginning 2274' prior to DER, 370' left of centerline, up to 80' AGL/1119' MSL. Boats beginning at DER, from 500' left to 500' right of centerline, up to 20' AGL/1048' MSL. Trees beginning 711' from DER, 621' right of centerline, up to 80' AGL/1179' MSL. Trees beginning 1212' from DER, 783' left of centerline, up to 80' AGL/1139' MSL. **Sea Lane 32**, trees beginning 3390' prior to DER, 191' left of centerline, up to 80' AGL/1159' MSL. Trees beginning 2976' prior to DER, 296' right of centerline, up to 80' AGL/1119' MSL. Boats beginning at DER, from 500' left to 500' right of centerline, up to 20' AGL/1048' MSL. Trees beginning 2328' from DER, 1082' right of centerline, up to 80' AGL/1179' MSL. **Sea Lane 36**, trees beginning 2755' prior to DER, 370' right of centerline, up to 80' AGL/1119' MSL. Trees beginning 571' prior to DER, 290' left of centerline, up to 80' AGL/1119' MSL. Boats beginning at DER, from 500' left to 500' right of centerline, up to 20' AGL/1048' MSL. Trees beginning 694' from DER, 381' left of centerline, up to 80' AGL/1179' MSL. Trees beginning 2440' from DER, 650' right of centerline, up to 80' AGL/1119' MSL.

GROTON (NEW LONDON), CT

GROTON-NEW LONDON (GON)
TAKEOFF MINIMUMS AND (OBSTACLE)
DEPARTURE PROCEDURES
AMDT 8 12040 (FAA)

TAKEOFF MINIMUMS: **Rwy 5**, 300-2 or std. w/min. climb gradient of 260' per NM to 400. **Rwy 15**, 300-1 or std. w/min. climb gradient of 425' per NM to 300. **Rwy 33**, 300-1½ or std. w/min. climb of 380' per NM to 300.

DEPARTURE PROCEDURE: **Rwy 33**, climb on GON VOR/DME R-335 to 2000 before proceeding on course. TAKEOFF OBSTACLE NOTES: **Rwy 23**, bush 570' from DER, 490' right of centerline, 12' AGL/21' MSL. Tree 2770' from DER, 700' left of centerline, 50' AGL/76' MSL. **Rwy 5**, REIL 74' from DER, 151' left of centerline, 3' AGL/9' MSL. Fence beginning 186' from DER, 186' right of centerline, up to 7' AGL/18' MSL. Vehicle on road 215' from DER, 501' left of centerline, 15' AGL/30' MSL. Multiple poles beginning 205' from DER, 474' left of centerline, up to 30' AGL/52' MSL. Multiple trees beginning 416' from DER, right and left of centerline, up to 80' AGL/94' MSL. Multiple trees beginning 6918' from DER, right and left of centerline, up to 80' AGL/286' MSL. **Rwy 15**, bush 54' from DER, 238' right of centerline, 4' AGL/11' MSL. Trees beginning 1703' from DER, right and left of centerline, up to 81' AGL/153' MSL. **Rwy 33**, multiple trees beginning 106' from DER, left and right of centerline, up to 50' AGL/219' MSL. Multiple poles beginning 163' from DER, right and left of centerline, up to 20' AGL/48' MSL. Railroad 201' from DER, 163' left of centerline, 15' AGL/32' MSL. Multiple poles beginning 4279' from DER, 235' left of centerline, up to 100' AGL/207' MSL. Tank 5144' from DER, 926' left of centerline, 88' AGL/225' MSL.

HARTFORD, CT

HARTFORD-BRAINARD (HFD)
TAKEOFF MINIMUMS AND (OBSTACLE)
DEPARTURE PROCEDURES
AMDT 5 10210 (FAA)

TAKEOFF MINIMUMS: **Rwys 11,29**, NA-Environmental.

Rwy 20, 300-1½ or std. w/min. climb of 217' per NM to 300, alternatively, with standard TAKEOFF minimums and a normal 200'/NM climb gradient, TAKEOFF must occur no later than 1500' prior to DER.

DEPARTURE PROCEDURE: **Rwy 2**, climb heading 024° to 1000 before turning left. **Rwy 20**, climb heading 175° to 1300 before turning right.

TAKEOFF OBSTACLE NOTES: **Rwy 2**, pipe on obstruction light building, beginning 376' from DER, 593' left of centerline, up to 25' AGL/57' MSL. Bushes beginning 587' from DER, 186' left of centerline, up to 10' AGL/54' MSL. Trees beginning 765' from DER, 59' left of centerline, up to 100' AGL/134' MSL. Trees beginning 57' from DER, 46' right of centerline, up to 100' AGL/125' MSL. Obstruction light on levee 189' from DER, on centerline to 154' right of centerline, up to 22' AGL/45' MSL. **Rwy 20**, levee 56' from DER, 453' left of centerline, up to 24' AGL/42' MSL. Trees and bushes beginning 160' from DER, 118' left of centerline, up to 100' AGL/119' MSL. Obstruction light on dike beginning 493' from DER, 277' left of centerline, up to 27' AGL/45' MSL. Spires 1.12 NM from DER, 403' left of centerline, 150' AGL/195' MSL. Lights beginning 196' from DER, 400' right of centerline, up to 24' AGL/42' MSL. Trees beginning 798' from DER, 28' right of centerline, up to 100' AGL/142' MSL. Dam 885' from DER, 52' left of centerline, 27' AGL/45' MSL.

12 OCT 2017 to 09 NOV 2017

12 OCT 2017 to 09 NOV 2017

TAKEOFF MINIMUMS, (OBSTACLE) DEPARTURE PROCEDURES, AND DIVERSE VECTOR AREA (RADAR VECTORS)

17285

NE-1

**TAKEOFF MINIMUMS, (OBSTACLE) DEPARTURE PROCEDURES, AND
DIVERSE VECTOR AREA (RADAR VECTORS)**

17285

HAVERHILL, NH**DEAN MEMORIAL (5B9)**

TAKEOFF MINIMUMS AND (OBSTACLE)
DEPARTURE PROCEDURES
ORIG 07074 (FAA)

TAKEOFF MINIMUMS: **Rwy 1**, std. w/ min. climb of 339' per NM to 2000, or 1800-2 for climb in visual conditions. **Rwy 19**, NA terrain.

DEPARTURE PROCEDURE: **Rwy 1**, climbing left turn heading 240° and LEB VOR/DME R-029 to 4800 before proceeding on course. Do not exceed 180 KIAS until established on LEB VOR/DME R-029. For climb in visual conditions: Cross Dean Memorial Airport southwest bound at or above 2200 via LEB VOR/DME R-036 to 5000 before proceeding on course. Do not exceed 180 KIAS until established on LEB VOR/DME R-036.

TAKEOFF OBSTACLE NOTES: **Rwy 1**, multiple buildings beginning 180' from DER, 74' left of centerline, up to 25' AGL/571' MSL. Building 300' from DER, 100' right of centerline, 35' AGL/584' MSL. Vehicles at DER, beginning 500' right of centerline, to 500' left of centerline 15' AGL/596' MSL. Multiple trees beginning 1450' from DER left and right of centerline, up to 100' AGL/599' MSL. Multiple trees beginning 1.3 NM from DER left and right of centerline, up to 100' AGL/819' MSL. Multiple trees and towers beginning 1.7 NM from DER left and right of centerline, up to 200' AGL/919' MSL.

HIGHGATE, VT**FRANKLIN COUNTY STATE (FSO)**

TAKEOFF MINIMUMS AND (OBSTACLE)
DEPARTURE PROCEDURES
AMDT 1 11181 (FAA)

TAKEOFF MINIMUMS: **Rwy 19**, 500-2½ or std. w/min. climb of 316' per NM to 800.

DEPARTURE PROCEDURE: **Rwy 19**, climbing right turn heading 240° to 1700 before turning east.

TAKEOFF OBSTACLE NOTES: **Rwy 1**, vehicles on road beginning at DER, 459' left of centerline, up to 15' AGL/234' MSL. Trees beginning 182' from DER, 47' right of centerline, up to 100' AGL/359' MSL. Trees beginning 454' from DER, 20' left of centerline, up to 100' AGL/289' MSL. **Rwy 19**, vehicles on road beginning 1' from DER, 240' right of centerline, up to 15' AGL/240' MSL. Trees beginning 215' from DER, 313' right of centerline, up to 90' AGL/309' MSL. Trees beginning 628' from DER, 660' left of centerline, up to 62' AGL/281' MSL. Pole 688' from DER, 656' left of centerline, 43' AGL/262' MSL. Catenary 1299' from DER, 734' left of centerline, 44' AGL/263' MSL.

HOPEDALE, MA**HOPEDALE INDUSTRIAL PARK (1B6)**

TAKEOFF MINIMUMS AND (OBSTACLE)
DEPARTURE PROCEDURES
AMDT 2 95341 (FAA)

TAKEOFF MINIMUMS: **Rwy 18**, 300-1 or std. with a min. climb of 320' per NM to 900. **Rwy 36**, 600-1 or std. with a min. climb of 280' per NM to 1100.

DEPARTURE PROCEDURE: **Rwy 18**, climb runway heading to 900 before turning on course. **Rwy 36**, climb runway heading to 1100 before turning on course.

HOULTON, ME**HOULTON INTL (HUL)**

TAKEOFF MINIMUMS AND (OBSTACLE)
DEPARTURE PROCEDURES
AMDT 2 11237 (FAA)

TAKEOFF MINIMUMS: **Rwy 1**, 300-1½ or std. w/min. climb of 429' per NM to 900. **Rwy 5**, 300-1½ or std. with min. climb of 340' per NM to 900. **Rwy 19**, 500-3. **Rwy 23**, 400-1½ or std. w/min. climb of 389' per NM to 1000. DEPARTURE PROCEDURE: **Rwy 23**, Climb heading 229° to 1000 before turning left.

TAKEOFF OBSTACLE NOTES: **Rwy 1**, trees beginning 109' from DER, 170' left of centerline, up to 100' AGL/739' MSL. Tree 141' from DER, 241' right of centerline, 100' AGL/579' MSL. Vehicle on roadway 520' from DER, 7' left of centerline, 15' AGL/494' MSL. **Rwy 5**, trees beginning 144' from DER, 155' left of centerline, up to 100' AGL/599' MSL. Trees beginning 432' from DER, 557' right of centerline, up to 100' AGL/779' MSL. **Rwy 19**, trees beginning 2331' from DER, 610' left of centerline, up to 100' AGL/939' MSL. Trees beginning 2580' from DER, 414' right of centerline, up to 100' AGL/949' MSL. **Rwy 23**, trees beginning 427' from DER, 411' left of centerline, up to 100' AGL/829' MSL. Trees beginning 52' from DER, 309' right of centerline, up to 100' AGL/619' MSL.

HYANNIS, MA**BARNSTABLE MUNI-BOARDMAN/
POLANDO FIELD (HYA)**

TAKEOFF MINIMUMS AND (OBSTACLE)
DEPARTURE PROCEDURES
AMDT 3A 08269 (FAA)

TAKEOFF MINIMUMS: **Rwy 33**, 300-1 or std. with a min. climb of 354' per NM to 300.

DEPARTURE PROCEDURE: **Rwys 24,33**, climb runway heading to 700 before proceeding on course.

TAKEOFF OBSTACLE NOTES: **Rwy 33**, pole 3961' from DER, 1531' right of centerline, 97' AGL/235' MSL.

JAFFREY, NH**JAFFREY AIRPORT-SILVER RANCH (AFN)**

TAKEOFF MINIMUMS AND (OBSTACLE)
DEPARTURE PROCEDURES
AMDT 1 14149 (FAA)

TAKEOFF MINIMUMS: **Rwys 16, 34**, 1000-2½ for climb in visual conditions.

DEPARTURE PROCEDURE: **Rwys 16, 34**, for climb in visual conditions: cross Jaffrey airport-Silver Ranch at or above 1900, then via the GDM VOR/DME R-023 to GDM. When executing VOR/DME, notify ATC prior to departure.

TAKEOFF OBSTACLE NOTES: **Rwy 16**, trees beginning 126' from DER, 140' left of centerline, up to 100' AGL/1209' MSL. Trees beginning 189' from DER, 120' right of centerline, up to 100' AGL/1520' MSL. **Rwy 34**, trees beginning 8263' from DER, 613' left of centerline, up to 100' AGL/1441' MSL. Trees beginning 13' from DER, 69' right of centerline, up to 100' AGL/1322' MSL.

**TAKEOFF MINIMUMS, (OBSTACLE) DEPARTURE PROCEDURES, AND
DIVERSE VECTOR AREA (RADAR VECTORS)**

17285

NE-1

TAKEOFF MINIMUMS, (OBSTACLE) DEPARTURE PROCEDURES, AND DIVERSE VECTOR AREA (RADAR VECTORS)

17285

KEENE, NH

DILLANT-HOPKINS (EEN)

TAKEOFF MINIMUMS AND (OBSTACLE)
DEPARTURE PROCEDURES
AMDT 5 97282 (FAA)

TAKEOFF MINIMUMS: **Rwy 2**, 1200-2. **Rwy 14**, 2200-2 or std. with a min. climb of 450' per NM to 2500. **Rwy 20**, 1000-2 or std. with a min. climb of 320' per NM to 1700. **Rwy 32**, 1600-2.

DEPARTURE PROCEDURE: **Rwy 2**, climb runway heading to 2100, then climbing left turn to assigned altitude direct EEN VORTAC before proceeding on course. **Rwy 14**, climb runway heading to 2500, then climbing right turn to assigned altitude direct EEN VORTAC before proceeding on course. **Rwy 20**, climb direct EEN VORTAC until passing 3000, if not at 3000 or above at EEN VORTAC climb in EEN holding pattern; (NE, right turns, 215° inbound) before proceeding on course. **Rwy 32**, climbing right turn heading 350° to 2100, then climbing left turn to assigned altitude direct EEN VORTAC before proceeding on course.

TAKEOFF OBSTACLE NOTES: **Rwy 2**, 81' AGL trees 400' from DER and 500' right of centerline. **Rwy 32**, 89' AGL trees 800' from DER and 600' right of centerline.

LACONIA, NH

LACONIA MUNI (LCI)

TAKEOFF MINIMUMS AND (OBSTACLE)
DEPARTURE PROCEDURES
AMDT 4 09127 (FAA)

TAKEOFF MINIMUMS: **Rwy 8**, 600-1¼ or std. w/ min. climb of 652' per NM to 1300. **Rwy 26**, 300-1 or std. w/ min. climb of 421' per NM to 900.

DEPARTURE PROCEDURE: **Rwy 8**, climb to 2500 via heading 079° and ENE VORTAC R-315 inbound to 3500 before proceeding on course. **Rwy 26**, climb heading 264° to 2500 before proceeding on course.

TAKEOFF OBSTACLE NOTES: **Rwy 8**, trees, terrain, and pole beginning 65' from DER, 20' right of centerline, up to 50' AGL/1112' MSL. Trees and terrain beginning 93' from DER, 5' left of centerline, up to 71' AGL/590' MSL. **Rwy 26**, trees and antenna on tower beginning 123' from DER, 42' left of centerline, up to 84' AGL/743' MSL. Trees beginning 2145' from DER, 626' right of centerline, up to 93' AGL/672' MSL.

LAWRENCE, MA

LAWRENCE MUNI (LWM)

TAKEOFF MINIMUMS AND (OBSTACLE)
DEPARTURE PROCEDURES
AMDT 4 11069 (FAA)

TAKEOFF MINIMUMS: **Rwy 5**, 300-1½ or std. with a min. climb of 419' per NM to 500. **Rwy 14**, 300-1 or std. with a min. climb of 601' per NM to 600. **Rwy 23**, 300-1 or std. with a min. climb of 334' per NM to 400.

DEPARTURE PROCEDURE: **Rwy 5**, climb heading 053° to 1100 before turning left.

TAKEOFF OBSTACLE NOTES: **Rwy 5**, trees beginning 288' from DER, 44' left of centerline, up to 86' AGL/282' MSL. Pole and trees beginning 544' from DER, 403' right of centerline, up to 75' AGL/281' MSL. Trees 3731' from DER, 1052' right of centerline, up to 86' AGL/331' MSL. Trees 1.2 NM from DER, 41' right of centerline, up to 89' AGL/354' MSL. **Rwy 14**, bush, pole, and trees beginning 150' from DER, 9' left of centerline, up to 59' AGL/186' MSL. Bush, buildings, poles, and trees beginning 102' from DER, 19' right of centerline, up to 94' AGL/290' MSL. Rod on pole 3473' from DER, 1391' right of centerline, 73' AGL/417' MSL. **Rwy 23**, bush and trees beginning 176' from DER, 464' left of centerline, up to 53' AGL/160' MSL. Bush 117' from DER, 183' right of centerline, up to 13' AGL/140' MSL. Stack 3768' from DER, 1310' right of centerline, 260' AGL/295' MSL. **Rwy 32**, trees 159' from DER, 198' left of centerline, up to 54' AGL/141' MSL. Trees beginning 120' from DER, 156' right of centerline, up to 60' AGL/177' MSL.

LEBANON, NH

LEBANON MUNI (LEB)

TAKEOFF MINIMUMS AND (OBSTACLE)
DEPARTURE PROCEDURES
AMDT 2 09015 (FAA)

TAKEOFF MINIMUMS: **Rwy 7**, 300-1 w/ min. climb of 380' per NM to 3100, or 2000-3 for climb in visual conditions.

Rwy 18, std. w/ min. climb of 380' per NM to 3800, or 2000-3 for climb in visual conditions. **Rwy 25**, std. w/ min. climb of 380' per NM to 3100, or 2000-3 for climb in visual conditions. **Rwy 36**, std. w/ min. climb of 350' per NM to 1800, or 2000-3 for climb in visual conditions.

DEPARTURE PROCEDURE: **Rwy 7**, climb heading 075° to 1900 before proceeding on course. **Rwy 18**, climb heading 184° to 3100 before proceeding on course. **Rwy 25**, climb heading 255° to 3100 before proceeding on course. **Rwy 36**, climb heading 004° to 1800 before proceeding on course. **Rwys 7, 18, 25, 36**, - for climb in visual conditions: cross Lebanon Muni airport at or above 2500 before proceeding on course.

TAKEOFF OBSTACLE NOTES: **Rwy 7**, numerous trees beginning 104' from DER, 255' right of centerline up to 112' AGL/752' MSL. Pole 505' from DER, 391' right of centerline, 72' AGL/672' MSL. Bush 426' from DER, 259' right of centerline, 9' AGL/589' MSL. Multiple trees beginning 13' from DER, 209' left of centerline, up to 100' AGL/1100' MSL. **Rwy 18**, numerous trees, and obstruction light poles beginning 288' from DER, 107' right of centerline, up to 100' AGL/784' MSL. Numerous trees and obstruction light poles beginning 433' from DER, 206' left of centerline, up to 82' AGL/962' MSL. Bush 216' from DER, 471' right of centerline, 16' AGL/619' MSL. **Rwy 25**, multiple trees beginning 340' from DER, 400' left of centerline, up to 91' AGL/871' MSL. Tree 382' from departure end of runway, 502' right of centerline, 91' AGL/581' MSL. **Rwy 36**, multiple trees beginning 243' from DER, 355' left of centerline, up to 81' AGL/581' MSL. Pole 155' from DER, 505' left of centerline, 30' AGL/590' MSL. Tree 357' from DER, 511' right of centerline, 83' AGL/583' MSL.

12 OCT 2017 to 09 NOV 2017

12 OCT 2017 to 09 NOV 2017

TAKEOFF MINIMUMS, (OBSTACLE) DEPARTURE PROCEDURES, AND DIVERSE VECTOR AREA (RADAR VECTORS)

17285

NE-1

TAKEOFF MINIMUMS, (OBSTACLE) DEPARTURE PROCEDURES, AND DIVERSE VECTOR AREA (RADAR VECTORS)

17285

LINCOLN, ME

LINCOLN RGNL (LRG)

TAKEOFF MINIMUMS AND (OBSTACLE) DEPARTURE PROCEDURES AMDT 3 10210 (FAA)

TAKEOFF MINIMUMS: **Rwy 17**, 700-1½ with a minimum climb of 389' per NM to 1100 or 1100-2½ for climb in visual conditions. **Rwy 35**, 300-1 or std. w/ min. climb of 453' per NM to 500.

DEPARTURE PROCEDURE: **Rwy 17**, climb heading 181° to 1100 before proceeding on course. For climb in visual conditions, cross Lincoln Rgnl airport at or above 1200 MSL before proceeding on course. **Rwy 35**, climb heading 346° to 700 before proceeding on course.

TAKEOFF OBSTACLE NOTES: **Rwy 17**, trees beginning 123' from DER, 296' left of centerline, up to 80' AGL/299' MSL. Trees beginning 447' from DER, 126' right of centerline, up to 80' AGL/289' MSL. Towers beginning 7448' from DER, 2310' left of centerline, up to 191' AGL/869' MSL. **Rwy 35'** trees beginning 4' from DER, 284' left of centerline, up to 80' AGL/359' MSL. Trees beginning 252' from DER, 196' right of centerline, up to 80' AGL/369' MSL.

LYNDONVILLE, VT

CALEDONIA COUNTY (CDA)

TAKEOFF MINIMUMS AND (OBSTACLE) DEPARTURE PROCEDURES AMDT 6 15316 (FAA)

TAKEOFF MINIMUMS: **Rwy 2**, 500-2 w min. climb of 255' per NM to 3600, or 2600-3 for climb in visual conditions. **Rwy 20**, std. w/min. climb of 270' per NM to 2100, or 2600-3 for climb in visual conditions.

DEPARTURE PROCEDURE: **Rwy 2**, climb heading 024° to 3500 before proceeding on course or for climb in visual conditions, cross Caledonia County airport at or above 3600. When executing the VCOA, notify ATC prior to departure. **Rwy 20**, climb heading 204° to 3300 before proceeding on course or for climb in visual conditions to cross Caledonia County airport at or above 3600. When executing the VCOA, notify ATC prior to departure.

TAKEOFF OBSTACLE NOTES: **Rwy 2**, trees beginning 1068' from DER, 721' left of centerline, up to 80' AGL/1359' MSL. Terrain beginning 1327' from DER, 29' left of centerline, 1319' MSL. Trees beginning 2510' from DER, 568' left of centerline, up to 80' AGL/1359' MSL. Terrain beginning 2529' from DER, 74' left of centerline, 1339' MSL. Trees beginning 2919' from DER, 554' left of centerline, up to 80' AGL/1395' MSL. Terrain beginning 2989' from DER, 51' right of centerline, 1322' MSL. Trees beginning 4533' from DER, 1636' left of centerline, up to 80' AGL/1419' MSL. Terrain beginning 1.1 NM from DER, 61' left of centerline, 1446' MSL. Trees beginning 1.1 NM from DER, 276' left of centerline, up to 80' AGL/1477' MSL. Terrain beginning 1.5 NM from DER, 454' left of centerline, 1466' MSL. Trees beginning 1.6 NM from DER, 648' left of centerline, up to 80' AGL/1558' MSL. Rising terrain beginning 9.2 NM from DER. 1.9 NM left of centerline, up to 2773' MSL. **Rwy 20**, terrain beginning 115' from DER, left and right of centerline, up to 1198' MSL. Trees beginning 578' from DER, 107' right of centerline, up to 80' AGL/1257' MSL. Rising terrain beginning 3.3 NM from DER, 4397' right of centerline, up to 1659' MSL.

MACHIAS, ME

MACHIAS VALLEY (MVM)

TAKEOFF MINIMUMS AND (OBSTACLE) DEPARTURE PROCEDURES AMDT 2 13234 (FAA)

TAKEOFF MINIMUMS: **Rwy 18**, 400-2. **Rwy 36**, 400-3
TAKEOFF OBSTACLE NOTES: **Rwy 18**, multiple buildings, vehicles on road beginning 720' from DER, left and right of centerline, up to 25' AGL/124' MSL. Terrain and trees beginning 65' from DER, left and right of centerline, up to 100' AGL/319' MSL. **Rwy 36**, multiple buildings, vehicles on road beginning 2453' from DER, left and right of centerline, up to 25' AGL/204' MSL. Trees beginning 105' from DER, left and right of centerline, up to 100' AGL/459' MSL. Tower 7922' from DER, 883' left of centerline, up 85' AGL/402' MSL.

MANCHESTER, NH

MANCHESTER (MHT)

TAKEOFF MINIMUMS AND (OBSTACLE) DEPARTURE PROCEDURES AMDT 10A 17229 (FAA)

TAKEOFF MINIMUMS: **Rwy 17**, 300-1¼ or std. w/ min. climb of 277' per NM to 600. **Rwy 35**, 300-1½ or std. w/ min. climb of 253' per NM to 500.

DEPARTURE PROCEDURE: **Rwy 6**, climb heading 057° to 1000 before turning right. **Rwy 24**, climb heading 244° to 1000 before proceeding on course. **Rwy 35**, climb heading 352° to 1000 before proceeding on course.

TAKEOFF OBSTACLE NOTES: **Rwy 6**, pole and trees beginning 67' from DER, 162' left of centerline, up to 107' AGL/313' MSL. Fence and trees beginning 6' from DER, 90' right of centerline, up to 72' AGL/272' MSL. **Rwy 17**, buildings and trees beginning 1792' from DER, 54' left of centerline, up to 107' AGL/418' MSL. Transmission line tower, poles, buildings, and trees beginning 761' from DER, 4' right of centerline, up to 90' AGL/418' MSL. Pole 5563' from DER, 92' left of centerline, 57' AGL/457' MSL. **Rwy 24**, pole and trees beginning 221' from DER, 243' left of centerline, up to 119' AGL/293' MSL. Trees beginning 2556' from DER, 1041' right of centerline, up to 101' AGL/313' MSL. **Rwy 35**, pole and trees beginning 891' from DER, 527' left of centerline, up to 76' AGL/320' MSL. Poles and trees beginning 719' from DER, 558' right of centerline, up to 44' AGL/281' MSL. Trees 5933' from DER, 1950' left of centerline, up to 76' AGL/409' MSL. Trees 1 NM from DER, 1581' left of centerline, up to 60' AGL/414' MSL. Trees 1.2 NM from DER, 1946' left of centerline, up to 85' AGL/407' MSL.

12 OCT 2017 to 09 NOV 2017

12 OCT 2017 to 09 NOV 2017

TAKEOFF MINIMUMS, (OBSTACLE) DEPARTURE PROCEDURES, AND DIVERSE VECTOR AREA (RADAR VECTORS)

17285

NE-1

TAKEOFF MINIMUMS, (OBSTACLE) DEPARTURE PROCEDURES, AND DIVERSE VECTOR AREA (RADAR VECTORS)

17285

MANSFIELD, MA

MANSFIELD MUNI (1B9)

TAKEOFF MINIMUMS AND (OBSTACLE)
DEPARTURE PROCEDURES
AMDT 2A 13178 (FAA)

TAKEOFF MINIMUMS: **Rwys 4,22**, NA - VFR only.
TAKEOFF OBSTACLE NOTES: **Rwy 14**, trees beginning 89' from DER, 454' left of centerline, up to 65' AGL/182' MSL. Trees beginning 68' from DER, 143' left of centerline, up to 32' AGL/149' MSL. Trees beginning 82' from DER, 98' right of centerline, up to 31' AGL/148' MSL. Trees beginning 1067' from DER, 14' left of centerline, up to 67' AGL/184' MSL. Trees beginning 846' from DER, 8' right of centerline, up to 101' AGL/208' MSL. **Rwy 32**, sign 56' from DER, 164' right of centerline, 2' AGL/124' MSL. Trees beginning 52' from DER, 187' left of centerline, up to 54' AGL/173' MSL. Trees beginning 742' from DER, 17' left of centerline, up to 97' AGL/224' MSL. Trees beginning 638' from DER, 10' right of centerline, up to 103' AGL/230' MSL.

MARSHFIELD, MA

MARSHFIELD MUNI-GEORGE HARLOW FIELD (GHG)

TAKEOFF MINIMUMS AND (OBSTACLE)
DEPARTURE PROCEDURES
AMDT 1 14317 (FAA)

TAKEOFF MINIMUMS: **Rwy 24**, 200-1¼ or std. w/min. climb of 205' per NM to 300, or alternatively, with standard takeoff minimums and a normal 200'/NM climb gradient, takeoff must occur no later than 1100' prior to DER.

DEPARTURE PROCEDURE: **Rwy 24**, climb heading 242° to 500 before turning north.

TAKEOFF OBSTACLE NOTES: **Rwy 6**, trees and bushes beginning 21' from DER, left and right of centerline, up to 51' AGL/51' MSL. Trees, poles and buildings beginning 1001' from DER, left and right of centerline, up to 59' AGL/68' MSL. Boat mast beginning 2734' from DER, left and right of centerline, up to 125' AGL/125' MSL. **Rwy 24**, trees beginning 15' from DER, 84' left of centerline, up to 74' AGL/74' MSL. Tree 474' from DER, 624' right of centerline, up to 71' AGL/77' MSL. Trees beginning 1371' from DER, left and right of centerline, up to 88' AGL/92' MSL. Trees beginning 4463' from DER, 1298' left of centerline, up to 88' AGL/153' MSL. Tree 6031' from DER, 1306' left of centerline, up to 89' AGL/158' MSL.

MERIDEN, CT

MERIDEN MARKHAM MUNI (MMK)

TAKEOFF MINIMUMS AND (OBSTACLE)
DEPARTURE PROCEDURES
AMDT 3 07046 (FAA)

TAKEOFF MINIMUMS: **Rwy 18**, 500-3 or std. w/ min. climb of 235' per NM to 1100. **Rwy 36**, std. w/ min. climb of 420' per NM to 1600, or 1500-2½ for climb in visual conditions.

DEPARTURE PROCEDURE: **Rwy 18**, climb heading 176° to 1100 before proceeding on course. **Rwy 36**, climbing left turn heading 320° to 1600 before proceeding on course, or for climb in visual conditions, cross Meriden Markham Municipal at or above 1500 before proceeding on course.

TAKEOFF OBSTACLE NOTES: **Rwy 18**, 200' AAO 1.9 NM from DER, 3441' left of centerline, 200' AGL/417' MSL. 200' AAO 1.9 NM from DER, 3563' left of centerline, 200' AGL/417' MSL. Terrain 50' from DER, 440' right of centerline, 109' MSL. 200' AAO 1.9 NM from DER, 3346' left of centerline, 200' AGL/410' MSL. Terrain 122' from DER, 223' right of centerline, 105' MSL. 200' AAO 2.5 NM from DER, 1984' left of centerline, 200' AGL/483' MSL. 200' AAO 2.5 NM from DER, 1889' left of centerline, 200' AGL/489' MSL. Multiple power lines beginning 500' from DER, 216' right of centerline, up to 52' AGL/172' MSL. Multiple power lines beginning 781' from DER, 192' left of centerline, up to 52' AGL/150' MSL. **Rwy 36**, multiple towers 3 NM from DER, 2284' right of centerline, up to 1117' AGL/1220' MSL. Multiple terrain/AAO 2.5 NM from DER, 3748' right of centerline, up to 200' AGL/903' MSL.

MILLINOCKET, ME

MILLINOCKET MUNI (MLT)

TAKEOFF MINIMUMS AND (OBSTACLE)
DEPARTURE PROCEDURES
AMDT 3 10042 (FAA)

TAKEOFF MINIMUMS: **Rwy 29**, 400-3 or std. w/ min. climb of 535' per NM to 1000.

Rwy 34, 400-2½ or std. w/ min. climb of 351' per NM to 900. DEPARTURE PROCEDURE: **Rwy 11**, climb via heading 107° and MLT R-330 to MLT VOR/DME thence...**Rwy 16**, climb via heading 156° and MLT R-309 to MLT VOR/DME thence...**Rwy 29**, climb via heading 287° to 1000 then climbing left turn via heading 152° and MLT R-290 to MLT VOR/DME thence...**Rwy 34**, climbing right turn via heading 156° and MLT R-344 to MLT VOR/DME thence...

...continue climb in MLT VOR/DME holding pattern (Southeast, Right Turns, 319° inbound) to cross MLT VOR/DME at or above 3000 before proceeding on course.

TAKEOFF OBSTACLE NOTES: **Rwy 11**, bushes beginning 82' from DER, 25' left of centerline, up to 16' AGL/406' MSL. Trees beginning 49' from DER, 258' left of centerline, up to 100' AGL/489' MSL. Trees beginning 52' from DER, 247' right of centerline, up to 100' AGL/489' MSL. Trees beginning 1685' from DER, left and right of centerline, up to 100' AGL/519' MSL. **Rwy 16**, vehicle 311' from DER, left and right of centerline, 15' AGL/393' MSL. Trees beginning 84' from DER, 272' left of centerline, up to 64' AGL/444' MSL. Trees beginning 20' from DER, 247' right of centerline, up to 66' AGL/436' MSL. Trees beginning 791' from DER, left and right of centerline, up to 100' AGL/489' MSL. **Rwy 29**, antenna, towers, power lines, and stacks beginning 294' from DER, 250' left of centerline, up to 302' AGL/782' MSL. Obstacle light on localizer, antenna, and power lines beginning 301' from DER, 1' right of centerline, up to 114' AGL/584' MSL. Trees beginning 300' from DER, 395' left of centerline, up to 62' AGL/452' MSL. Trees beginning 705' from DER, 237' right of centerline, up to 78' AGL/678' MSL. **Rwy 34**, trees beginning 28' from DER, 249' right of centerline, up to 113' AGL/729' MSL. Trees beginning 261' from DER, 317' left of centerline, up to 67' AGL/457' MSL. Tower 11162' from DER, 470' right of centerline, 310' AGL/708' MSL.

12 OCT 2017 to 09 NOV 2017

12 OCT 2017 to 09 NOV 2017

TAKEOFF MINIMUMS, (OBSTACLE) DEPARTURE PROCEDURES, AND DIVERSE VECTOR AREA (RADAR VECTORS)

17285

**TAKEOFF MINIMUMS, (OBSTACLE) DEPARTURE PROCEDURES, AND
DIVERSE VECTOR AREA (RADAR VECTORS)**

17285

MONTAGUE, MA**TURNERS FALLS (0B5)**

TAKEOFF MINIMUMS AND (OBSTACLE)
DEPARTURE PROCEDURES
AMDT 1 97002 (FAA)

TAKEOFF MINIMUMS: **Rwy 16**, 1200-1. **Rwy 34**,
1300-1 or std. with a min. climb rate of 370' per NM to
1900.

MORRISVILLE, VT**MORRISVILLE-STOWE STATE (MVL)**

TAKEOFF MINIMUMS AND (OBSTACLE)
DEPARTURE PROCEDURES
AMDT 3 13066 (FAA)

TAKEOFF MINIMUMS: **Rwy 1**, std. w/min. climb of 358'
per NM to 4300 or 3500-3 for climb in visual
conditions. **Rwy 19**, 900-3 w/min. climb of 500' per NM
to 5000 or 3500-3 for climb in visual conditions.

DEPARTURE PROCEDURE: **Rwy 1**, climb heading
029° to 4300 before proceeding on course. For climb in
visual conditions: cross Morrisville-Stowe State airport
at or above 4100' MSL before proceeding on course.
When executing VCOA, notify ATC prior to departure.
Rwy 19, climbing right turn heading 040° to 5000
before proceeding on course. For climb in visual
conditions: cross Morrisville-Stowe State airport at or
above 4100' MSL before proceeding on course. When
executing VCOA, notify ATC prior to departure.

TAKEOFF OBSTACLE NOTES: **Rwy 1**, multiple trees
beginning 79' from DER, 40' right of centerline, up to
38' AGL/746' MSL. Numerous trees beginning 1331'
from DER, 160' right of centerline, up to 74' AGL/812'
MSL. Multiple buildings, trees, pole, and silo beginning
413' from DER, 595' left of centerline, up to 91'
AGL/819' MSL. Numerous trees beginning 1829' from
DER, 257' left of centerline, up to 96' AGL/824' MSL.
Rwy 19, numerous trees beginning 11' from DER,
364' right of centerline, up to 80' AGL/794' MSL.
Multiple buildings beginning 210' from DER, 469' right
of centerline, up to 84' AGL/792' MSL. Numerous trees
and buildings beginning 677' from DER, 19' right of
centerline, up to 89' AGL/817' MSL. Numerous trees
and poles beginning 1309' from DER, 73' right of
centerline, up to 98' AGL/846' MSL. Numerous trees
beginning 5890' from DER, 1940' right of centerline, up
to 113' AGL/900' MSL. Multiple trees 187' from DER,
144' left of centerline, up to 54' AGL/762' MSL.
Numerous trees, poles, and building beginning 1218'
from DER, 5' left of centerline, up to 102' AGL/850'
MSL. Numerous trees beginning 1.5 NM from DER,
1979' left of centerline, up to 95' AGL/1175' MSL.

NANTUCKET, MA**NANTUCKET MEMORIAL (ACK)**

TAKEOFF MINIMUMS AND (OBSTACLE)
DEPARTURE PROCEDURES
AMDT 3 98281 (FAA)

TAKEOFF MINIMUMS: **Rwy 12**, 700-1 or std. with a min.
climb of 330' per NM to 800.

DEPARTURE PROCEDURE: **Rwys 6, 12, 15, 24, 30, 33**,
climb runway heading to 800 before proceeding on
course.

TAKEOFF OBSTACLE NOTES: **Rwy 33**, 70' AGL ant. on
building 954' from DER, 585' right of centerline.

NASHUA, NH**BOIRE FIELD (ASH)**

TAKEOFF MINIMUMS AND (OBSTACLE)
DEPARTURE PROCEDURES
AMDT 4 13178 (FAA)

DEPARTURE PROCEDURE: **Rwy 32**, climb heading 319°
to 900 before turning left.

TAKEOFF OBSTACLE NOTES: **Rwy 14**, trees beginning
47' from DER, left and right of centerline, up to 80'
AGL/262' MSL. Pole 707' from DER, 673' right of
centerline, up to 37' AGL/221' MSL. Poles beginning 853'
from DER, 170' left of centerline, up to 28' AGL/217' MSL.
Pole 989' from DER, 560' right of centerline, up to 53'
AGL/240' MSL. Trees beginning 1030' from DER, 62'
right of centerline, up to 80' AGL/270' MSL. Trees
beginning 1057' from DER, 6' left of centerline, up to 112'
AGL/283' MSL. Pole 1465' from DER, 656' right of
centerline, up to 68' AGL/253' MSL. Trees beginning
2253' from DER, 143' left of centerline, up to 82'
AGL/287' MSL. Trees beginning 2405' from DER, 205'
right of centerline, up to 113' AGL/289' MSL. **Rwy 32**,
trees beginning 20' from DER, 99' right of centerline, up
to 96' AGL/295' MSL. Trees beginning 882' from DER, on
centerline, up to 80' AGL/259' MSL. Trees beginning
2333' from DER, 107' left of centerline, up to 97'
AGL/300' MSL. Tree 3562' from DER, 1324' right of
centerline, up to 80' AGL/312' MSL.

12 OCT 2017 to 09 NOV 2017

12 OCT 2017 to 09 NOV 2017

**TAKEOFF MINIMUMS, (OBSTACLE) DEPARTURE PROCEDURES, AND
DIVERSE VECTOR AREA (RADAR VECTORS)**

17285

NE-1

TAKEOFF MINIMUMS, (OBSTACLE) DEPARTURE PROCEDURES, AND DIVERSE VECTOR AREA (RADAR VECTORS)

17285

NEW BEDFORD, MA

NEW BEDFORD RGNL (EWB)

TAKEOFF MINIMUMS AND (OBSTACLE) DEPARTURE PROCEDURES AMDT 8 15232 (FAA)

TAKEOFF MINIMUMS: **Rwy 14**, 300-1½ or std. w/min. climb of 280' per NM to 400'. **Rwy 32**, 300-2 or std. w/min. climb of 240' per NM to 400 or alternatively, with standard takeoff minimums and a normal 200' per NM climb gradient, takeoff must occur no later than 1900' prior to DER.

DEPARTURE PROCEDURE: **Rwy 14**, climb on heading 144° to 700 before turning right.

TAKEOFF OBSTACLE NOTES: **Rwy 5**, poles 37' from DER, 1' left of centerline, up to 13' AGL/87' MSL. Vehicle on roadway 198' from DER, across centerline, up to 15' AGL/120' MSL. Trees beginning 227' from DER, 452' right of centerline, up to 9' AGL/111' MSL. Poles 257' from DER, along centerline, up to 14' AGL/91' MSL. Poles beginning 478' from DER, 22' right of centerline, up to 16' AGL/101' MSL. NAVAID/DME antenna 524' from DER, 237' left of centerline, 30' AGL/103' MSL. Bush beginning 646' from DER, 21' left of centerline. up to 108' MSL. Trees beginning 718' from DER, 382' left of centerline, up to 31' AGL/126' MSL. Vehicle on roadway beginning 728' from DER, across centerline, up to 15' AGL/118' MSL. Trees beginning 825' from DER, 436' right of centerline, up to 8' AGL/134' MSL. Trees beginning 1198' from DER, left and right of centerline, up to 82' AGL/185' MSL.

Rwy 14, trees beginning 21' from DER, 360' left of centerline, up to 27' AGL/138' MSL. Trees beginning 647' from DER, 272' right of centerline, up to 27' AGL/126' MSL. Buildings 699' from DER, 650' left of centerline, up to 29' AGL/113' MSL. Trees beginning 712' from DER, 391' left of centerline, up to 27' AGL/142' MSL. Trees beginning 741' from DER, 314' right of centerline, up to 100' AGL/142' MSL. Buildings beginning 806' from DER, 585' left of centerline, up to 25' AGL/120' MSL. Tower and antenna 832' from DER, 616' left of centerline, up to 26' AGL/114' MSL. Trees beginning 1017' from DER, left and right of centerline, up to 27' AGL/134' MSL. Poles 1122' from DER, 735' left of centerline, up to 29' AGL/126' MSL. Monuments beginning 1181' from DER, 528' left of centerline, 2' AGL/99' MSL. Poles beginning 1259' from DER, 524' left of centerline, up to 42' AGL/139' MSL. Vehicle on roadway 1272' from DER, 742' left of centerline, up to 15' AGL/113' MSL. Fence and wall 1282' from DER, 675' left of centerline, up to 5' AGL/103' MSL. Poles beginning 1398' from DER, 590' right of centerline, up to 37' AGL/104' MSL. Buildings and signs 1602' from DER, 497' left of centerline, up to 37' AGL/125' MSL. Trees beginning 1982' from DER, left and right of centerline, up to 27' AGL/158' MSL. Signs 2916' from DER, 827' right of centerline, up to 70' AGL/171' MSL. Trees beginning 2921' from DER, 37' right of centerline, up to 57' AGL/158' MSL. Trees beginning 2971' from DER, 86' left of centerline, up to 57' AGL/151' MSL. Buildings 3335' from DER, 1140' left of centerline, up to 84' AGL/160' MSL. Chimney and stack 4102' from DER, 1391' left of centerline, up to 129' AGL/213' MSL. Building 4900' from DER, 1374' right of centerline, 143' AGL/235' MSL. Building, steeple and spire 1.1 NM from DER, 422' left of centerline, up to 233' AGL/281' MSL.

NEW BEDFORD, MA (CON'T)

NEW BEDFORD RGNL (EWB) (CON'T)

Rwy 23, bush 5' from DER, 492' left of centerline, 65' MSL. NAVAIDs 7' from DER, along centerline, 1' AGL/65' MSL. Vehicle on roadway 29' from DER, 258' left of centerline, up to 15' AGL/90' MSL. Vehicle on roadway 99' from DER, 203' right of centerline, up to 15' AGL/89' MSL. Trees beginning 2171' from DER, 902' right of centerline, up to 54' AGL/146' MSL. Trees beginning 2543' from DER, 1166' left of centerline, up to 54' AGL/137' MSL. **Rwy 32**, bush beginning 39' from DER, 113' right of centerline, up to 95' MSL. Trees beginning 294' from DER, 115' right of centerline, up to 45' AGL/140' MSL. Poles beginning 540' from DER, 349' left of centerline, up to 30' AGL/107' MSL. Trees beginning 687' from DER, 10' left of centerline, up to 45' AGL/135' MSL. Buildings 930' from DER, 677' left of centerline, up to 38' AGL/109' MSL. Trees beginning 1035' from DER, left and right of centerline, up to 32' AGL/142' MSL. Trees beginning 2062' from DER, 513' left of centerline, up to 32' AGL/236' MSL. Trees beginning 1 NM from DER, left and right of centerline, up to 48' AGL/288' MSL. Trees beginning 1.3 NM from DER, 1802' right of centerline, up to 48' AGL/298' MSL. Trees beginning 1.4 NM from DER, 1679' left of centerline, up to 48' AGL/288' MSL.

NEW HAVEN, CT

TWEED-NEW HAVEN (HVN)

TAKEOFF MINIMUMS AND (OBSTACLE) DEPARTURE PROCEDURES AMDT 6 12012 (FAA)

TAKEOFF MINIMUMS: **Rwy 2**, 300-1 w/min. climb of 340' per NM to 400. **Rwy 32**, 400-1½ or std. w/min. climb of 465' per NM to 600.

DEPARTURE PROCEDURE: **Rwy 2**, climb heading 016° to 1900 before turning left. **Rwy 32**, climb heading 324° to 1500 before turning right.

TAKEOFF OBSTACLE NOTES: **Rwy 2**, transmission line towers beginning 846' from DER, 356' left of centerline, up to 35' AGL/65' MSL. Building 124' from DER, 525' right of centerline, 53' AGL/64' MSL. Trees 1276' from DER, 817' left of centerline, up to 80' AGL/239' MSL. Trees 3755' from DER, 1494' left of centerline, up to 80' AGL/289' MSL. **Rwy 14**, terrain, buildings, and poles beginning 777' from DER, 5' left of centerline, up to 31' AGL/69' MSL. Terrain, vehicles on road, tower, buildings, and poles beginning 429' from DER, 143' right of centerline, up to 58' AGL/94' MSL. **Rwy 20**, pole 68' from DER, 498' right of centerline, 16' AGL/42' MSL.

Rwy 32, pole and trees beginning 1121' from DER, 55' left of centerline, up to 80' AGL/149' MSL. Control tower, poles, and trees beginning 617' from DER, 139' right of centerline, up to 80' AGL/149' MSL. Trees 2777' from DER, 1143' right of centerline, up to 80' AGL/169' MSL. Stack 1.1 NM from DER, 2227' right of centerline, 394' AGL/404' MSL.

12 OCT 2017 to 09 NOV 2017

12 OCT 2017 to 09 NOV 2017

TAKEOFF MINIMUMS, (OBSTACLE) DEPARTURE PROCEDURES, AND DIVERSE VECTOR AREA (RADAR VECTORS)

17285

NE-1

**TAKEOFF MINIMUMS, (OBSTACLE) DEPARTURE PROCEDURES, AND
DIVERSE VECTOR AREA (RADAR VECTORS)**

17285

NEWPORT, RI

NEWPORT STATE (UUU)

TAKEOFF MINIMUMS AND (OBSTACLE)

DEPARTURE PROCEDURES

AMDT 3A 07354 (FAA)

TAKEOFF MINIMUMS: **Rwy 4**, 300-2¼ or std. with a min. climb of 230' per NM to 600, or alternatively, with standard takeoff minimums and a normal 200'/NM climb gradient, takeoff must occur no later than 2100' prior to DER. **Rwy 16**, 200-1 or std. w/ min. climb of 430' per NM to 400.

DEPARTURE PROCEDURE: **Rwy 4**, climb heading 039° to 1200 before proceeding on course.

TAKEOFF OBSTACLE NOTES: **Rwy 4**, trees beginning 1.7 NM from DER, 916' right of centerline, up to 100' AGL/459' MSL. **Rwy 16**, tower 3782' from DER, 666' right of centerline, 100' AGL/285' MSL, tower 4203' from DER, 1100' right of centerline, 132' AGL/310' MSL. **Rwy 34**, terrain 102' from DER, 424' right of centerline, 159' MSL. Vehicle on road 726' from DER, 602' right of centerline.

NEWPORT, NH

PARLIN FIELD (2B3)

TAKEOFF MINIMUMS AND (OBSTACLE)

DEPARTURE PROCEDURES

ORIG 16147 (FAA)

TAKEOFF MINIMUMS: **Rwy 12, 30**, NA-Environmental. **Rwy 18**, 600-2½ w/min. climb of 365' per NM to 3400 or 2300-3 for climb in visual conditions. **Rwy 36**, 700-1¼ w/min. climb of 487' per NM to 3700 or 2300-3 for climb in visual conditions. Procedure NA at night.

DEPARTURE PROCEDURE: **Rwy 18**, Climb heading 182° to 3200 before proceeding on course. **Rwy 36**, Climb heading 002° to 2100 before proceeding on course.

VCOA: Obtain ATC approval for climb in visual conditions when requesting IFR clearance. Climb in visual conditions to cross Parlin field at or above 2900 before proceeding on course.

TAKEOFF OBSTACLE NOTES: **Rwy 18**, row of trees beginning 7' from DER, from 131' left to 460' right of centerline, and continuing 2715' south along both banks of the river, up to 100' AGL/887' MSL. Trees beginning 8' from DER, 460' right of centerline, up to 100' AGL/907' MSL. Trees beginning 439' from DER, 594' right of centerline, up to 100' AGL/926' MSL. Buildings and trees beginning 2654' from DER, 677' left of centerline, up to 100' AGL/926' MSL. Buildings and trees beginning 3117' from DER, 983' left of centerline, up to 100' AGL/946' MSL. Trees beginning 3626' from DER, 502' right of centerline, up to 100' AGL/946' MSL. Trees beginning 3812' from DER, 640' right of centerline, up to 100' AGL/966' MSL. Buildings and trees beginning 4084' from DER, 1528' left of centerline, up to 100' AGL/966' MSL. Buildings, vehicles, and trees beginning 4085' from DER, 974' right of centerline, up to 100' AGL/985' MSL. Trees beginning 4273' from DER, 1161' right of centerline, up to 100' AGL/998' MSL. Trees beginning 4559' from DER, 1340' right of centerline, up to 100' AGL/1018' MSL. Buildings and trees beginning 4630' from DER, 1577' right of centerline, up to 100' AGL/1037' MSL. Buildings, trees beginning 4826' from DER, 1559' right of centerline, up to 100' AGL/1064' MSL. Buildings, vehicles, and trees beginning 5046' from DER, 1757' right of centerline, up to 100' AGL/1084' MSL.

NEWPORT, NH (CON'T)

PARLIN FIELD (2B3) (CON'T)

Rwy 18 (CON'T): Buildings, vehicles, and trees beginning 5503' from DER, 1946' left of centerline, up to 100' AGL/1103' MSL. Tower 1.0 NM from DER, 155' right of centerline, 206' AGL/990' MSL. Buildings, vehicles, and trees beginning 1.4 NM from DER, 2233' right of centerline, up to 100' AGL/1123' MSL. Trees beginning 1.4 NM from DER, 2374' left of centerline, up to 100' AGL/1103' MSL. Trees beginning 1.6 NM from DER, 2567' left of centerline, up to 100' AGL/1222' MSL. Trees beginning 1.7 NM from DER, 2804' left of centerline, up to 100' AGL/1281' MSL. Trees beginning 1.9 NM from DER, 2480' left of centerline, up to 100' AGL/1300' MSL. Trees beginning 2.0 NM from DER, 3003' left of centerline, up to 100' AGL/1359' MSL. **Rwy 36**, vehicles on road beginning from DER, from 130' left to 380' right of centerline, up to 15' AGL/802' MSL. Trees beginning 61' from DER, from 264' left to 393' right of centerline, up to 100' AGL/887' MSL. Trees beginning 67' from DER, 192' left of centerline, up to 100' AGL/907' MSL. Trees beginning 101' from DER, 408' right of centerline, up to 100' AGL/907' MSL. Trees beginning 112' from DER, 453' right of centerline, up to 100' AGL/926' MSL. Trees beginning 181' from DER, 330' right of centerline, up to 100' MSL/946' MSL. Trees beginning 1056' from DER, from 25' right to 854' left of centerline, up to 100' AGL/966' MSL. Trees beginning 1485' from DER, from 37' right to 937' left of centerline, up to 100' AGL/985' MSL. Trees beginning 1587' from DER, 381' left of centerline, up to 100' AGL/1005' MSL. Trees beginning 1634' from DER, 455' left of centerline, up to 100' AGL/1024' MSL. Trees beginning 1703' from DER, 429' left of centerline, up to 100' AGL/1044' MSL. Trees beginning 1796' from DER, 292' left of centerline, up to 100' AGL/1064' MSL. Trees beginning 1880' from DER, 352' left of centerline, up to 100' AGL/1084' MSL. Trees beginning 4213' from DER, from 313' left to 1324' right of centerline, up to 100' AGL/1005' MSL. Trees continuing from 5591' from DER, on rising hillside, 826' left of centerline, up to 100' AGL/1103' MSL. Trees continuing from 5936' from DER, on rising hillside, 913' left of centerline, up to 100' AGL/1123' MSL. Trees continuing from 1.0 NM from DER, on rising hillside, 992' left of centerline, up to 100' AGL/1162' MSL. Trees continuing from 1.1 NM from DER, on rising hillside, 1158' left of centerline, up to 100' AGL/1202' MSL. Trees continuing from 1.2 NM from DER, on rising hillside, 1335' left of centerline, up to 100' AGL/1241' MSL. Trees beginning 1.2 NM from DER, 2305' right of centerline, up to 100' AGL/1064' MSL. Trees continuing from 1.3 NM from DER, on rising hillside, 1486' left of centerline, up to 100' AGL/1340' MSL. Trees continuing from 1.4 NM from DER, on rising hillside, 2436' left of centerline, up to 100' AGL/1399' MSL. Trees 1.5 NM from DER, on hilltop, 2732' left of centerline, up to 100' AGL/1418' MSL.

12 OCT 2017 to 09 NOV 2017

12 OCT 2017 to 09 NOV 2017

**TAKEOFF MINIMUMS, (OBSTACLE) DEPARTURE PROCEDURES, AND
DIVERSE VECTOR AREA (RADAR VECTORS)**

17285

NE-1

**TAKEOFF MINIMUMS, (OBSTACLE) DEPARTURE PROCEDURES, AND
DIVERSE VECTOR AREA (RADAR VECTORS)**

17285

NEWPORT, VT

NORTHEAST KINGDOM INTL (EFK)
TAKEOFF MINIMUMS AND (OBSTACLE)
DEPARTURE PROCEDURES
AMDT 3A 17285 (FAA)

TAKEOFF MINIMUMS: **Rwy 18**, std. w/min. climb of 470' per NM to 2500 or 300-1 w/min. climb of 350' per NM to 3000 or 2300-3 for climb in visual conditions. **Rwy 23**, std. w/min. climb of 320' per NM to 3200 or 2300-3 for climb in visual conditions. **Rwy 36**, std. w/min. climb of 320' per NM to 3300 or 2300-3 for climb in visual conditions.

DEPARTURE PROCEDURE: **Rwy 5**, climb heading 047° to 2200 before proceeding on course. **Rwy 18**, climb heading 177° to 3000 before proceeding on course. **Rwy 23**, climb heading 227° to 3000 before proceeding on course. **Rwy 36**, climb heading 357° to 3300 before proceeding on course.

VCOA: **Rwy 18, 23, 36**, obtain ATC approval for VCOA when requesting IFR clearance. Climb in visual conditions to cross Northeast Kingdom Intl airport at or above 3100 before proceeding on course.

TAKEOFF OBSTACLE NOTES: **Rwy 5**, vehicles on access road beginning 188' from DER, 232' left of centerline, up to 10' AGL/954' MSL. Vehicles on road beginning 216' from DER, 530' right of centerline, up to 15' AGL/940' MSL. Poles beginning 249' from DER, 85' right of centerline, up to 43' AGL/952' MSL. **Rwy 18**, trees beginning at DER, left and right of centerline, up to 100' AGL/1103' MSL. Trees beginning 1.4 NM from DER, 2704' right of centerline, up to 100' AGL/1142' MSL. **Rwy 23**, trees beginning at DER, left and right of centerline, up to 100' AGL/1024' MSL. Rising terrain beginning 6.3 NM from DER, 1.8 NM right of centerline, up to 2381' MSL. **Rwy 36**, trees beginning 1897' from DER, 613' left of centerline, up to 100' AGL/1044' MSL. Trees beginning 2962' from DER, 377' right of centerline, up to 100' AGL/1044' MSL. Trees beginning 5850' from DER, 2049' left of centerline. Up to 100' AGL/1123' MSL. Ridgeline beginning 3.3 NM from DER, 3031' left of centerline, up to 1515' MSL.

NORRIDGEWOCK, ME

CENTRAL MAINE AIRPORT OF
NORRIDGEWOCK (OWK)
TAKEOFF MINIMUMS AND (OBSTACLE)
DEPARTURE PROCEDURES
AMDT 4 14149 (FAA)

TAKEOFF MINIMUMS: **Rwy 3**, 300-1½ or std. w/min. climb of 210' per NM to 500, or alternatively, with standard takeoff minimums and a normal 200' per NM climb gradient, takeoff must occur no later than 1300' prior to DER. **Rwy 15**, std. w/min. climb of 235' per NM to 1100, or 1400-2½ for climb in visual conditions. **Rwy 21**, std. w/min. climb of 285' per NM to 1000, or 1400-2½ for climb in visual conditions.

DEPARTURE PROCEDURE: **Rwy 3**, climb heading 028° to 1200 before turning left. **Rwy 15**, climb heading 148° to 1100 before proceeding on course or for climb in visual conditions: cross Central Maine Airport of Norridgewock at or above 1500 before proceeding on course. When executing VCOA, notify ATC prior to departure. **Rwy 21**, climb heading 208° to 1000 before proceeding on course or for climb in visual conditions: cross Central Maine Airport of Norridgewock at or above 1500 before proceeding on course. When executing VCOA, notify ATC prior to departure. **Rwy 33**, climbing right turn to 1900 direct AUG VOR/DME before proceeding on course.

TAKEOFF OBSTACLE NOTES: **Rwy 3**, trees beginning 3' from DER, 196' right of centerline, up to 100' AGL/439' MSL. Trees beginning 139' from DER, 487' left of centerline, up to 100' AGL/367' MSL. **Rwy 15**, trees beginning 248' from DER, 559' right of centerline, up to 100' AGL/349' MSL. Trees beginning 477' from DER, 295' left of centerline, up to 100' AGL/369' MSL. **Rwy 21**, trees beginning 15' from DER, 108' right of centerline, up to 100' AGL/399' MSL. Trees beginning 523' from DER, 608' left of centerline, up to 100' AGL/409' MSL. **Rwy 33**, trees beginning 4' from DER, 21' left of centerline, up to 100' AGL/359' MSL. Trees beginning 264' from DER, 4' right of centerline, up to 100' AGL/379' MSL.

12 OCT 2017 to 09 NOV 2017

12 OCT 2017 to 09 NOV 2017

**TAKEOFF MINIMUMS, (OBSTACLE) DEPARTURE PROCEDURES, AND
DIVERSE VECTOR AREA (RADAR VECTORS)**

17285

NE-1

TAKEOFF MINIMUMS, (OBSTACLE) DEPARTURE PROCEDURES, AND DIVERSE VECTOR AREA (RADAR VECTORS)

17285

NORTH ADAMS, MA

HARRIMAN-AND-WEST (AQW)

TAKEOFF MINIMUMS AND (OBSTACLE)

DEPARTURE PROCEDURES

ORIG 15316 (FAA)

TAKEOFF MINIMUMS: **Rwy 11**, 1100-2¼ w/min. climb of 558' per NM to 4200 or std. w/min. climb of 830' per NM to 3600 or 3500-3 for climb in visual conditions.

Rwy 29, 900-3 w/min. climb of 660' per NM to 3800 or std. w/min. climb of 843' per NM to 3500 or 3500-3 for climb in visual conditions.

DEPARTURE PROCEDURE: **Rwy 11**, climb heading 111° to 4000 before proceeding on course. **Rwy 29**, climb heading 291° to 3800 before proceeding on course.

VCOA: **Rwy 11, 29**, obtain ATC approval for climb in visual conditions when requesting IFR clearance. Climb in visual conditions to cross Harriman-and-West airport at or above 4000 before proceeding on course.

TAKEOFF OBSTACLE NOTES: **Rwy 11**, building 3' from DER, 420' left of centerline, 15' AGL/664' MSL. Pole and trees beginning 33' from DER, 360' right of centerline, up to 22' AGL/692' MSL. Vehicles on road 49' from DER, crossing centerline, 15' AGL/661' MSL. Multiple trees and building continuing from 149' from DER, left and right of centerline, up to 85' AGL/730' MSL. Multiple trees, poles and buildings continuing from 198' from DER, left and right of centerline, up to 57' AGL/746' MSL. Trees and poles continuing from 546' from DER, right and left of centerline, up to 71' AGL/760' MSL. Multiple trees and buildings continuing from 607' from DER, right and left of centerline, up to 79' AGL/768' MSL. Multiple trees and poles continuing from 794' from DER, from 708' right and across centerline, up to 92' AGL/781' MSL. Multiple trees and building on rising hillside continuing from 1459' from DER from 843' right and across centerline, up to 64' AGL/793' MSL. Trees on rising hillside continuing from 1625' from DER, from 880' right and across centerline, up to 79' AGL/827' MSL. Trees on rising hillside continuing from 2010' from DER, from 1009' right and across centerline, up to 107' AGL/856' MSL. Trees on rising hillside continuing from 2510' from DER, from 1169' right and crossing centerline, up to 93' AGL/882' MSL. Trees on rising hillside continuing from 3537' from DER, 33' right of centerline, up to 80' AGL/907' MSL. Trees on rising hillside continuing from 4322' from DER, 205' right of centerline, up to 69' AGL/955' MSL. Trees on rising hillside continuing from 4809' from DER, 603' right of centerline, up to 65' AGL/971' MSL. Trees on rising hillside continuing from 4842' from DER, 292' right of centerline, up to 89' AGL/995' MSL. Trees on rising hillside continuing from 4975' from DER, 330' right of centerline, up to 74' AGL/1000' MSL. Trees on rising hillside continuing from 5081' from DER, 408' right of centerline, up to 84' AGL/1009' MSL. Trees on rising hillside continuing from 5178' from DER, 146' right of centerline, up to 79' AGL/1024' MSL. Trees on rising hillside continuing from 5315' from DER, 114' right of centerline, up to 100' AGL/1065' MSL. Trees on rising hillside continuing from 5443' from DER, 270' right of centerline, up to 108' AGL/1112' MSL. Trees on rising hillside continuing from 5610' from DER, 10' right of centerline, up to 105' AGL/1129' MSL. Trees on rising hillside continuing from 5767' from DER, crossing centerline, up to 80' AGL/1163' MSL. Trees on rising hillside continuing from 5889' from DER, crossing centerline, up to 105' AGL/1188' MSL. Trees near hilltop continuing from 1 NM from DER, crossing centerline, up to 90' AGL/1232' MSL.

NORTH ADAMS, MA (CON'T)

HARRIMAN-AND-WEST (AQW) (CON'T)

Rwy 11 (CON'T), Trees near hilltop continuing from 1.1 NM from DER, crossing centerline, up to 86' AGL/1287' MSL. Trees on rising hillside and along hilltop continuing from 1.2 NM from DER, 3' right of centerline, up to 65' AGL/1306' MSL. Trees on rising hillside continuing from 1.2 NM from DER, 7' left of centerline, up to 91' AGL/1294' MSL. Trees on hilltop 1.9 NM from DER, 3504' right of centerline, up to 111' AGL/1705' MSL. Transmission tower and transmission line 2 NM from DER, crossing centerline, 50' AGL/1527' MSL. **Rwy 29**, pole 9' from DER, 49' right of centerline, 4' AGL/653' MSL. Trees beginning 60' from DER, 314' left of centerline, up to 65' AGL/707' MSL. Trees continuing from 143' from DER, left and right of centerline, up to 75' AGL/745' MSL. Trees continuing from 427' from DER, left and right of centerline, up to 111' AGL/765' MSL. Multiple buildings 827' from DER, 501' left of centerline, up to 28' AGL/717' MSL. Trees and buildings continuing from 1061' from DER, 26' left of centerline, up to 94' AGL/782' MSL. Trees and buildings continuing from 1487' from DER, 56' right of centerline, up to 76' AGL/726' MSL. Trees and buildings continuing from 1667' from DER, left and right of centerline, up to 60' AGL/828' MSL. Trees continuing from 1975' from DER, 18' left of centerline, up to 77' AGL/865' MSL. Multiple trees, buildings, and vehicles, continuing from 2172' from DER, up to 99' AGL/886' MSL. Trees on rising hillside continuing from 1.1 NM from DER, left and right of centerline, up to 80' AGL/966' MSL. Trees on rising hillside continuing from 1.4 NM from DER, left and right of centerline, up to 93' AGL/1038' MSL. Trees on rising hillside continuing from 1.5 NM from DER, left and right of centerline, up to 99' AGL/1043' MSL. Trees on rising hillside continuing from 1.6 NM from DER, left and right of centerline, up to 112' AGL/1116' MSL. Trees on rising hillside continuing from 1.6 NM from DER, left and right of centerline, up to 74' AGL/1197' MSL. Trees on hilltop continuing from 1.7 NM from DER, left and right of centerline, up to 119' AGL/1215' MSL. Trees on rising hillside continuing from 2.3 NM from DER, left and right of centerline, up to 75' AGL/1295' MSL. Trees on rising hillside to hilltop continuing from 2.4 NM from DER, left and right of centerline, up to 51' AGL/1479' MSL.

NORTH KINGSTOWN, RI

QUONSET STATE (OQU)

TAKEOFF MINIMUMS AND (OBSTACLE)

DEPARTURE PROCEDURES

AMDT 1 13010 (FAA)

TAKEOFF MINIMUMS: **Rwy 5**, 300-1 or std w/min. climb of 402' per NM to 300. **Rwy 16**, 300-1 or std w/min. climb of 281' per NM to 300.

TAKEOFF OBSTACLE NOTES: **Rwy 5**, rising terrain 63' from DER, left to right of centerline, up to 33' MSL. Ships beginning at DER, 220' right of centerline, up to 185' MSL. **Rwy 16**, rising terrain 22' from DER, left to right of centerline, up to 27' MSL. Ships beginning 71' from DER, 543' left of centerline, up to 185' MSL. **Rwy 23**, rising terrain 101' from DER, left to right of centerline, up to 33' MSL. Vehicles beginning 393' from DER, 4' left of centerline, 15' AGL/24' MSL. Trains beginning 398' from DER, 138' left of centerline, 23' AGL/31' MSL. Crane 1826' from DER, 924' right of centerline, 106' AGL/112' MSL. Ships beginning 415' from DER, 521' left of centerline, up to 185' MSL. **Rwy 34**, trees beginning 1073' from DER, 697' left of centerline, up to 80' AGL/112' MSL.

TAKEOFF MINIMUMS, (OBSTACLE) DEPARTURE PROCEDURES, AND DIVERSE VECTOR AREA (RADAR VECTORS)

17285

NE-1

TAKEOFF MINIMUMS, (OBSTACLE) DEPARTURE PROCEDURES, AND
DIVERSE VECTOR AREA (RADAR VECTORS)

17285

NORTHAMPTON, MA**NORTHAMPTON (7B2)**

TAKEOFF MINIMUMS AND (OBSTACLE)
 DEPARTURE PROCEDURES
 AMDT 4 11013 (FAA)

TAKEOFF MINIMUMS: **Rwy 14**, 1500-2½ for climb in visual conditions. **Rwy 32**, std. w/ min. climb of 286' per NM to 2000.

DEPARTURE PROCEDURE: **Rwy 14**, for climb in visual conditions: cross Northampton Airport at or above 1500 before proceeding on course. **Rwy 32**, climb heading 323° to 2000 before proceeding on course.

TAKEOFF OBSTACLE NOTES: **Rwy 14**, vehicle on road 5' from DER, 178' right of centerline, up to 17' AGL/136' MSL. Vehicle on road 35' from DER, 143' left of centerline, up to 17' AGL/136' MSL. Trees beginning 984' from DER, 476' left of centerline, up to 100' AGL/219' MSL. Numerous trees beginning 1.2 NM from DER, 1556' left and right of centerline, up sloping on Holyoke range, up to 100' AGL/909' MSL. **Rwy 32**, vehicle on road 256' from DER, up to 17' AGL/136' MSL. Building 176' from DER, 169' right of centerline 25' AGL/144' MSL. Trees beginning 85' from DER, 462' left of centerline, up to 100' AGL/219' MSL. Vehicle on road 1638' from DER, 116' left of centerline, 17' AGL/176' MSL.

NORWOOD, MA**NORWOOD MEMORIAL (OWD)**

TAKEOFF MINIMUMS AND (OBSTACLE)
 DEPARTURE PROCEDURES
 AMDT 7 14149 (FAA)

TAKEOFF MINIMUMS: **Rwy 10**, 400-1½ or std. w/ min. climb of 310' per NM to 400. **Rwy 17**, 300-2¼ or std. w/ min. climb of 220' per NM to 500, or alternatively, with standard takeoff minimums and a normal 200' per NM climb gradient, takeoff must occur no later than 1700' prior to DER. **Rwy 28**, 400-2 or std. w/min. climb of 385' per NM to 500. **Rwy 35**, 300-1¼ or std. w/min. climb of 230' per NM to 1900, or alternatively, with standard takeoff minimums and a normal 200' per NM climb gradient, takeoff must occur no later than 1700' prior to DER.

DEPARTURE PROCEDURE: **Rwy 10**, climb heading 104° to 1100 before turning north. **Rwy 28**, climb heading 284° to 700 before turning north. **Rwy 35**, turn left heading 315° to 1900 before turning east.

TAKEOFF OBSTACLE NOTES: **Rwy 10**, trees 225' from DER, 341' left of centerline, 53' AGL/97' MSL. Trees 1641' from DER, 33' left of centerline, 73' AGL/118' MSL. Trees 75' from DER, 302' right of centerline, 15' AGL/63' MSL. Trees 4561' from DER, 1005' right of centerline, 87' AGL/215' MSL. Trees 4244' from DER, 1228' right of centerline, 98' AGL/211' MSL. Trees 1.2 NM from DER, 238' right of centerline, 89' AGL/242' MSL. **Rwy 17**, trees 42' from DER, 507' left of centerline, 33' AGL/76' MSL. Trees 2777' from DER, 273' right of centerline, 78' AGL/126' MSL. Trees 2742' from DER, 291' left of centerline, 73' AGL/121' MSL. Trees 2192' from DER, 444' left of centerline, 64' AGL/106' MSL. Trees 1.8 NM from DER, 3332' right of centerline, 100' AGL/350' MSL. Trees 2979' from DER, 667' right of centerline, 76' AGL/124' MSL. Trees 2111' from DER, 616' right of centerline, 68' AGL/114' MSL. **Rwy 28**, trees 932' from DER, 463' left of centerline, 74' AGL/131' MSL. Trees 2352' from DER, 157' left of centerline, 75' AGL/172' MSL. Trees 2868' from DER, 41' left of centerline, 81' AGL/188' MSL. Stack 6004' from DER, 1246' left of centerline, 103' AGL/224' MSL. Stack 5559' from DER, 651' left of centerline, 117' AGL/234' MSL. Spire 1.6 NM from DER, 311' left of centerline, 98' AGL/335' MSL. Tree 610' from DER, 544' right of centerline, 71' AGL/119' MSL. Tower 4465' from DER, 238' right of centerline, 157' AGL/262' MSL. Spire 6044' from DER, 1320' right of centerline, 143' AGL/284' MSL. Tower 1.7 NM from DER, 723' right of centerline, 132' AGL/386' MSL. Trees 1.9' from DER, 722' right of centerline, 100' AGL/339' MSL. **Rwy 35**, trees 647' from DER, 625' left of centerline, 72' AGL/120' MSL. Trees 2791' from DER, 478' left of centerline, 75' AGL/124' MSL. Tree 3123' from DER, 598' left of centerline, 83' AGL/133' MSL. Pole 5856' from DER, 936' right of centerline, 155' AGL/216' MSL. Pole 5686' from DER, 769' right of centerline, 150' AGL/211' MSL. Trees 1557' from DER, 787' right of centerline, 80' AGL/125' MSL.

12 OCT 2017 to 09 NOV 2017

12 OCT 2017 to 09 NOV 2017

TAKEOFF MINIMUMS, (OBSTACLE) DEPARTURE PROCEDURES, AND
DIVERSE VECTOR AREA (RADAR VECTORS)

17285

NE-1

TAKEOFF MINIMUMS, (OBSTACLE) DEPARTURE PROCEDURES, AND DIVERSE VECTOR AREA (RADAR VECTORS)

17285

OLD TOWN, ME

DEWITT FIELD OLD TOWN MUNI (OLD)

TAKEOFF MINIMUMS AND (OBSTACLE)

DEPARTURE PROCEDURES

ORIG 07270 (FAA)

TAKEOFF OBSTACLE NOTES: **Rwy 4**, trees beginning 61' from DER, 337' right of centerline, up to 80' AGL/239' MSL. Trees beginning 281' from DER 363' left of centerline, up to 80' AGL/199' MSL. **Rwy 12**, trees beginning 338' from DER, 33' right of centerline, up to 80' AGL/259' MSL. **Rwy 22**, trees beginning 223' from DER, 296' left of centerline, up to 80' AGL/239' MSL. Trees beginning 514' from DER, 184' right of centerline, up to 80' AGL/209' MSL. **Rwy 30**, trees beginning 952' from DER, 55' left of centerline, up to 80' AGL/199' MSL.

ORANGE, MA

ORANGE MUNI (ORE)

TAKEOFF MINIMUMS AND (OBSTACLE)

DEPARTURE PROCEDURES

AMDT 1 12152 (FAA)

TAKEOFF MINIMUMS: **Rwy 1**, std. w/min. climb of 325' per NM to 1800 or 1300-2½ for climb in visual conditions. **Rwy 14**, 400-1½ w/min. climb of 270' per NM to 1800 or std. w/min. climb of 500' per NM to 1200 or 1300-2 ½ for climb in visual conditions. **Rwy 19**, 300-1 ¼ or std. w/min. climb of 240' per NM to 900. **Rwy 32**, 400-2 ¼ w/min. climb of 265' per NM to 1700 or std. w/min. climb of 340' per NM to 1700 or 1300-2 ½ for climb in visual conditions.

DEPARTURE PROCEDURE: **Rwy 1**, climb heading 016° to 1800 before proceeding on course. For climb in visual conditions: cross Orange Muni Airport at or above 1700 MSL before proceeding on course. When executing VCOA, notify ATC prior to departure. **Rwy 14**, climb heading 142° to 2000 before proceeding on course. For climb in visual conditions: cross Orange Muni Airport at or above 1700 MSL before proceeding on course. When executing VCOA, notify ATC prior to departure. **Rwy 19**, climb heading 196° to 1500 before proceeding on course. **Rwy 32**, climb heading 322° to 1700 before proceeding on course. For climb in visual conditions: cross Orange Muni Airport at or above 1700 MSL before proceeding on course. When executing VCOA, notify ATC prior to departure.

TAKEOFF OBSTACLE NOTES: **Rwy 1**, pole and trees beginning 272' from DER, 6' left of centerline, up to 92' AGL/624' MSL. Terrain and trees beginning 5' from DER, 23' right of centerline, up to 100' AGL/632' MSL. **Rwy 14**, trees beginning 186' from DER, 15' left of centerline, up to 90' AGL/699' MSL. Buildings and trees beginning 48' from DER, 23' right of centerline, up to 94' AGL/703' MSL. Tower 5889' from DER, 1606' left of centerline, 88' AGL/926' MSL. Trees 1.1 NM from DER, 2138' left of centerline, up to 70' AGL/817' MSL. **Rwy 19**, trees beginning 164' from DER, 28' left of centerline, up to 94' AGL/667' MSL. Trees beginning 1130' from DER, 23' right of centerline, up to 96' AGL/705' MSL. Trees 1.1 NM from DER, 1931' right of centerline, up to 83' AGL/751' MSL. Trees 1.2 NM from DER, 2125' right of centerline, up to 112' AGL/781' MSL. Trees 1.4 NM from DER, 1927' right of centerline, up to 84' AGL/772' MSL. **Rwy 32**, trees beginning 14' from DER, 87' left of centerline, up to 91' AGL/680' MSL. Trees beginning 521' from DER, 13' right of centerline, up to 95' AGL/618' MSL. Trees 1.2 NM from DER, 2366' left of centerline, up to 94' AGL/841' MSL. Trees 1.7 NM from DER, 3315' right of centerline, up to 61' AGL/906' MSL.

OXFORD, CT

WATERBURY-OXFORD (OXC)

TAKEOFF MINIMUMS AND (OBSTACLE)

DEPARTURE PROCEDURES

AMDT 5 06327 (FAA)

TAKEOFF MINIMUMS: **Rwy 36**, 300-1 or std. w/ a min. climb of 240' per NM to 1000, alternatively, w/ std. takeoff minimums and a normal 200'/NM climb gradient, takeoff must occur no later than 1900' prior to DER.

TAKEOFF OBSTACLE NOTES: **Rwy 18**, multiple trees and transmission towers beginning 510' from DER, 595' left of centerline, up to 100' AGL/777' MSL. Tree 2157' from DER, 154' from centerline, up to 100' AGL/735' MSL. **Rwy 36**, multiple trees and terrain beginning 464' from DER, 535' from centerline, up to 100' AGL/881' MSL. Tree 54' from DER, 450' left of centerline, up to 100' AGL/736' MSL. Tree 618' from DER, 369' left of centerline, up to 100' AGL/745' MSL.

OXFORD, ME

OXFORD COUNTY RGNL (81B)

TAKEOFF MINIMUMS AND (OBSTACLE)

DEPARTURE PROCEDURES

AMDT 1 07186 (FAA)

TAKEOFF MINIMUMS: **Rwy 15**, 600-3 or 1800-2½ for climb in visual conditions. **Rwy 33**, std. w/min. climb of 475' per NM to 2000, or 1800-2½ for climb in visual conditions.

DEPARTURE PROCEDURE: **Rwy 15**, climb heading 149° to 1300 before proceeding on course or for climb in visual conditions cross Oxford County Rgnl Airport at or above 2000 before proceeding on course. **Rwy 33**, climb heading 329° to 2000 before proceeding on course or for climb in visual conditions cross Oxford County Rgnl Airport at or above 2000 before proceeding on course.

TAKEOFF OBSTACLE NOTES: **Rwy 15**, multiple trees beginning 3607' from DER, 572' left of centerline, up to 100' AGL/679' MSL. Multiple assumed obstacles beginning 1.7 NM from DER, 1478' left of centerline, up to 200' AGL/849' MSL. **Rwy 33**, multiple trees beginning 4121' from DER, 70' left of centerline, up to 100' AGL/499' MSL. Multiple trees beginning 5446' from DER, 239' right of centerline, up to 100' AGL/719' MSL. Multiple assumed obstacles beginning 1.6 NM from DER, 393' right of centerline, up to 200' AGL/1079' MSL.

12 OCT 2017 to 09 NOV 2017

12 OCT 2017 to 09 NOV 2017

TAKEOFF MINIMUMS, (OBSTACLE) DEPARTURE PROCEDURES, AND DIVERSE VECTOR AREA (RADAR VECTORS)

17285

NE-1

**TAKEOFF MINIMUMS, (OBSTACLE) DEPARTURE PROCEDURES, AND
DIVERSE VECTOR AREA (RADAR VECTORS)**

17285

PAWTUCKET, RI

**NORTH CENTRAL STATE (SFZ)
TAKEOFF MINIMUMS AND (OBSTACLE)
DEPARTURE PROCEDURES
AMDT 4 13066 (FAA)**

TAKEOFF OBSTACLE NOTES: **Rwy 5**, tree 103' from DER, 233' right of centerline, 34' AGL/434' MSL. Windsock abeam DER, 233' right of centerline, 16' AGL/426' MSL. Bush 40' from DER, 249' left of centerline, 28' AGL/428' MSL. Pole 25' from DER, 505' left of centerline, 78' AGL/439' MSL. Tree 346' from DER, 569' left of centerline, 87' AGL/438' MSL. **Rwy 15**, trees beginning 148' from DER, 32' left of centerline, up to 74' AGL/523' MSL. Trees beginning 119' from DER, 417' right of centerline, up to 93' AGL/552' MSL. Pole 200' from DER, 286' right of centerline, 74' AGL/504' MSL. Tree 2569' from DER, on centerline, 67' AGL/516' MSL. **Rwy 23**, trees beginning 144' from DER, 278' left of centerline, up to 90' AGL/480' MSL. Pole 171' from DER, 511' left of centerline, 85' AGL/475' MSL. Trees beginning 916' from DER, 602' right of centerline, 87' AGL/456' MSL. Pole 176' from DER, 507' right of centerline, 65' AGL/446' MSL. **Rwy 33**, trees beginning 58' from DER, 80' left of centerline, up to 45' AGL/554' MSL. Poles beginning 291' from DER, 207' left of centerline, up to 80' AGL/490' MSL. Trees beginning 23' from DER, 504' right of centerline, up to 75' AGL/494' MSL. Trees beginning 819' from DER, 415' right of centerline, up to 94' AGL/504' MSL. Poles beginning 827' from DER, 523' right of centerline, up to 44' AGL/464' MSL.

PLAINVILLE CT

**ROBERTSON FIELD (4B8)
TAKEOFF MINIMUMS AND (OBSTACLE)
DEPARTURE PROCEDURES
ORIG 15120 (FAA)**

TAKEOFF MINIMUMS: **Rwy 2**, std. w/min. climb of 220' per NM to 2400, or 2200-3 for climb in visual conditions.
DEPARTURE PROCEDURE: **Rwy 2**, climb heading 019° to 2400 before turning right. **Rwy 20**, climb heading 199° to 1800 before proceeding on course.
VCOA: **Rwy 2**, obtain ATC approval for climb in visual conditions when requesting IFR clearance. Climb in visual conditions to cross Robertson field at or above 2300 before proceeding on course.
TAKEOFF OBSTACLE NOTES: **Rwy 2**, trees beginning 6' from DER, 143' left of centerline, up to 96' AGL/267' MSL. Poles and trees beginning 128' from DER, 143' right of centerline, up to 102' AGL/273' MSL. Trees beginning 2018' from DER, 128' right of centerline, up to 118' AGL/329' MSL. Trees beginning 2038' from DER, 786' left of centerline, up to 128' AGL/349' MSL. **Rwy 20**, trees, poles and buildings beginning 46' from DER, 23' left of centerline, up to 71' AGL/262' MSL. Trees beginning 356' from DER, 99' right of centerline, up to 61' AGL/252' MSL. Trees beginning 2020' from DER, 10' right of centerline, up to 71' AGL/262' MSL. Trees and poles beginning 2025' from DER, 247' left of centerline, up to 98' AGL/289' MSL.

PITTSFIELD, MA

**PITTSFIELD MUNI (PSF)
TAKEOFF MINIMUMS AND (OBSTACLE)
DEPARTURE PROCEDURES
AMDT 2 99198 (FAA)**

TAKEOFF MINIMUMS: **Rwys 14, 32**, NA.
Rwy 8, 1100-2 or std. with a min. climb of 270' per NM to 2500. **Rwy 26**, 800-2 or std. with a min. climb of 360' per NM to 2100.
DEPARTURE PROCEDURE: **Rwy 8**, climb runway heading to 2000, then climbing right turn via R-331 to 3000 before proceeding on course. **Rwy 26**, climb runway heading to 2400 before proceeding on course.
TAKEOFF OBSTACLE NOTES: **Rwy 8**, 120' AGL tree 370' from DER, 533' right of centerline.

PITTSFIELD, ME

**PITTSFIELD MUNI (2B7)
TAKEOFF MINIMUMS AND (OBSTACLE)
DEPARTURE PROCEDURES
AMDT 2A 12040 (FAA)**

DEPARTURE PROCEDURE: **Rwy 36**, 300-1¼ or std w/ min. climb of 220' per NM to 500.
TAKEOFF OBSTACLE NOTES: **Rwy 18**, trees beginning 86' from DER, left and right of centerline, up to 80' AGL/259' MSL. **Rwy 36**, aircraft 49' from DER, 156' left of centerline, 17' AGL/216' MSL. Vehicle 139' from DER, 452' left of centerline, 15' AGL/214' MSL. Building, trees and poles beginning 63' from DER, 15' right of centerline, up to 77' AGL/357' MSL. Trees, poles and buildings beginning 106' from DER, 39' left of centerline, up to 82' AGL/312' MSL.

PLYMOUTH, MA

**PLYMOUTH MUNI (PYM)
TAKEOFF MINIMUMS AND (OBSTACLE)
DEPARTURE PROCEDURES
AMDT 2 98029 (FAA)**

TAKEOFF MINIMUMS: **Rwy 6**, 300-1 or std. with a min. climb of 390' per NM to 500. **Rwys 15, 300-1**. **Rwy 24**, 300-1 or std. with a min. climb of 220' per NM to 400. **Rwy 33**, 300-1 or std. with a min. climb of 210' per NM to 400.
DEPARTURE PROCEDURE: **Rwy 6**, climb runway heading to 900 before proceeding on course.

12 OCT 2017 to 09 NOV 2017

12 OCT 2017 to 09 NOV 2017

**TAKEOFF MINIMUMS, (OBSTACLE) DEPARTURE PROCEDURES, AND
DIVERSE VECTOR AREA (RADAR VECTORS)**

17285

NE-1

TAKEOFF MINIMUMS, (OBSTACLE) DEPARTURE PROCEDURES, AND DIVERSE VECTOR AREA (RADAR VECTORS)

17285

PORTLAND, ME

PORTLAND INTL JETPORT (PWM)
TAKEOFF MINIMUMS AND (OBSTACLE)
DEPARTURE PROCEDURES
AMDT 7 15344 (FAA)

TAKEOFF MINIMUMS: **Rwy 11**, 300-1¼ or std. w/min. climb of 272' per NM to 400. **Rwy 36**, 400-2¼ or std. w/min. climb of 235' per NM to 600.

TAKEOFF OBSTACLE NOTES: **Rwy 11**, tree 481' from DER, 563' right of centerline, 32' AGL/69' MSL. Tree 650' from DER, 551' left of centerline, 25' AGL/67' MSL. Trees beginning 5943' from DER, 1152' left of centerline, up to 189' AGL/230' MSL. Trees beginning 1 NM from DER, 2025' left of centerline, up to 186' AGL/228' MSL. Trees beginning 1 NM from DER, 1660' left of centerline, up to 209' AGL/251' MSL. **Rwy 18**, tree 107' from DER, 522' right of centerline, 33' AGL/77' MSL. Tree 178' from DER, 481' right of centerline, 38' AGL/82' MSL. Trees beginning 207' from DER, left and right of centerline, up to 57' AGL/78' MSL. Trees beginning 403' from DER, 503' right of centerline, up to 66' AGL/110' MSL. Trees beginning 1038' from DER, left and right of centerline, up to 65' AGL/109' MSL. Trees beginning 1257' from DER, left and right of centerline, up to 83' AGL/127' MSL. Trees beginning 1676' from DER, 217' right of centerline, up to 99' AGL/143' MSL. Trees beginning 4242' from DER, 1132' right of centerline, up to 124' AGL/168' MSL. **Rwy 29**, trees beginning 1301' from DER, 789' left of centerline, up to 47' AGL/122' MSL. Trees 2185' from DER, 830' left of centerline, up to 74' AGL/149' MSL. Trees beginning 2742' from DER, 811' right of centerline, up to 83' AGL/180' MSL. Trees beginning 3103' from DER, 1245' left of centerline, up to 114' AGL/189' MSL. Trees beginning 4218' from DER, 1382' left of centerline, up to 129' AGL/204' MSL. **Rwy 36**, building 11' from DER, 149' left of centerline, 2' AGL/46' MSL. Fence 23' from DER, 495' left of centerline, 21' AGL/68' MSL. Vehicles on road, beginning 196' from DER, 251' left of centerline, up to 17' AGL/56' MSL. Trees beginning 364' from DER, 87' left of centerline, up to 60' AGL/73' MSL. Trees beginning 21' from DER, 252' left of centerline, up to 56' AGL/101' MSL. Trees beginning 238' from DER, 515' left of centerline, up to 68' AGL/112' MSL. Trees beginning 1281' from DER, 832' right of centerline, up to 85' AGL/129' MSL. Trees beginning 1699' from DER, 450' right of centerline, up to 76' AGL/121' MSL. Trees beginning 2298 from DER, 848' left of centerline, up to 81' AGL/125' MSL. Tree 3545' from DER, 1437' left of centerline, 93' AGL/138' MSL.

PRESQUE ISLE, ME

NORTHERN MAINE RGNL ARPT AT
PRESQUE ISLE (PQI)
TAKEOFF MINIMUMS AND (OBSTACLE)
DEPARTURE PROCEDURES
AMDT 4A 11321 (FAA)

TAKEOFF MINIMUMS: **Rwy 1**, 300-1¼ or std. w/min. climb of 456' per NM to 900. **Rwy 10**, 300-1¼ or std. w/min. climb of 262' per NM to 900. **Rwy 19**, 800-1 or std. with a min. climb of 230' per NM to 1600.

DEPARTURE PROCEDURE: **Rwy 1**, climb runway heading to 1200 before proceeding on course. **Rwy 10**, climb runway heading to 1700 before proceeding on course.

TAKEOFF OBSTACLE NOTES: **Rwy 1**, tree 2792' from DER, 856' right of centerline, up to 54' AGL/694' MSL. Tree 7304' from DER, 1849' right of centerline, up to 71' AGL/749' MSL. **Rwy 10**, tree 8710' from DER, 1660' right of centerline, up to 70' AGL/760' MSL. Tree 8861' from DER, 1668' right of centerline, up to 84' AGL/764' MSL.

PRINCETON, ME

PRINCETON MUNI (PNN)
TAKEOFF MINIMUMS AND (OBSTACLE)
DEPARTURE PROCEDURES
AMDT 1 14149 (FAA)

TAKEOFF MINIMUMS: **Rwys 6,24**, NA-Runway closed. TAKEOFF OBSTACLE NOTES: **Rwy 15**, bushes beginning 42' from DER, left and right of centerline, up to 18' AGL/247' MSL. Trees beginning 104' from DER, 227' left of centerline, up to 69' AGL/288' MSL. Trees beginning 154' from DER, 287' right of centerline, up to 79' AGL/298' MSL. Trees beginning 900' from DER, left and right of centerline, up to 100' AGL/298' MSL. **Rwy 33**, bushes beginning 33' from DER, 194' left of centerline, up to 16' AGL/275' MSL. Poles beginning 70' from DER, 495' left of centerline, up to 29' AGL/298' MSL. Trees beginning 248' from DER, left and right of centerline, up to 100' AGL/344' MSL.

12 OCT 2017 to 09 NOV 2017

12 OCT 2017 to 09 NOV 2017

PORTSMOUTH, NH

PORTSMOUTH INTL AT PEASE (PSM)
TAKEOFF MINIMUMS AND (OBSTACLE)
DEPARTURE PROCEDURES
ORIG-A 12096 (FAA)

DEPARTURE PROCEDURE: **Rwy 16**, climb heading 165° to 600 before turning left.

TAKEOFF OBSTACLE NOTES: **Rwy 34**, building 519' from DER, 439' right of centerline, 16' AGL/115' MSL. Trees beginning 2752' from DER, 1090' right of centerline, 90' AGL/170' MSL.

TAKEOFF MINIMUMS, (OBSTACLE) DEPARTURE PROCEDURES, AND DIVERSE VECTOR AREA (RADAR VECTORS)

17285

NE-1

**TAKEOFF MINIMUMS, (OBSTACLE) DEPARTURE PROCEDURES, AND
DIVERSE VECTOR AREA (RADAR VECTORS)**

17285

PROVIDENCE, RI

THEODORE FRANCIS GREEN STATE
(PVD)

TAKEOFF MINIMUMS AND (OBSTACLE)
DEPARTURE PROCEDURES

AMDT 12 07074 (FAA)

TAKEOFF MINIMUMS: **Rwy 34**, std. w/ a min. climb of 269' per NM to 500, or 300-2 w/ a min. climb of 250' per NM to 1200, or 1000-2½ for climb in visual conditions.

DEPARTURE PROCEDURE: **Rwy 34**, for climb in visual conditions: cross Theodore Francis Green State Airport at or above 900 MSL before proceeding on course.

TAKEOFF OBSTACLE NOTES: **Rwy 5**, multiple trees beginning 1272' from DER, 506' left of centerline, up to 50' AGL/109' MSL. Multiple trees beginning 1541' from DER, 738' right of centerline, up to 73' AGL/123' MSL. **Rwy 16**, multiple trees beginning 85' from DER, 98' right of centerline, up to 36' AGL/105' MSL. Multiple trees beginning 364' from DER, 127' left of centerline, up to 68' AGL/112' MSL. Multiple light poles beginning 2797' from DER, 914' right of centerline, up to 66' AGL/110' MSL. Antenna 3890' from DER, 1352' right of centerline, 91' AGL/151' MSL. Tower 3931' from DER, 1377' right of centerline, 77' AGL/137' MSL. **Rwy 34**, vent 105' from DER, 310' right of centerline, 47' AGL/76' MSL. Blast fence 211' from DER, 209' left of centerline, 7' AGL/61' MSL. Pole 312' from DER, 279' right of centerline, 20' AGL/80' MSL. Multiple trees beginning 352' from DER, 484' right of centerline, up to 79' AGL/136' MSL. Obstruction light 400' from DER, 189' left of centerline, 15' AGL/74' MSL. Vent 546' from DER, 518' left of centerline, 26' AGL/85' MSL. Multiple poles beginning 593' from DER, 245' left of centerline, up to 68' AGL/97' MSL. Multiple trees beginning 1233' from DER, 112' left of centerline, up to 79' AGL/132' MSL. Light 710' from DER, 617' left of centerline, 24' AGL/93' MSL. Tower 9063' from DER, 2916' right of centerline, 255' AGL/310' MSL.

PROVINCETOWN, MA

PROVINCETOWN MUNI (PVC)

TAKEOFF MINIMUMS AND (OBSTACLE)
DEPARTURE PROCEDURES

ORIG 07214 (FAA)

TAKEOFF OBSTACLE NOTES: **Rwy 7**, trees beginning 133' from DER, 118' right of centerline up to 33' AGL/37' MSL. Trees beginning 165' from DER, 89' left of centerline up to 33' AGL/47' MSL. **Rwy 25**, bush 376' from DER, 575' right of centerline, 12' AGL/21' MSL.

RANGELEY, ME

RANGELEY LAKE SEAPLANE BASE (M57)
TAKEOFF MINIMUMS AND (OBSTACLE)

DEPARTURE PROCEDURES

AMDT 1 14149 (FAA)

TAKEOFF MINIMUMS: **Rwy 6**, std. w/min. climb of 442' per NM to 4700 or 2600- 2½ for climb in visual conditions. **Rwy 24**, std. w/min. climb of 300' per NM to 3900 or 2600-2½ for climb in visual conditions.

DEPARTURE PROCEDURE: **Rwy 6**, climb heading 075° to 4700 before proceeding on course. For climb in visual conditions, cross Rangeley Lake airport at or above 4000 before proceeding on course, do not exceed 210 KIAS until leaving 4000. When executing VCOA, notify ATC prior to departure. **Rwy 24**, climb heading 255° to 3900 before proceeding on course. For climb in visual conditions, cross Rangeley Lake airport at or above 4000 before proceeding on course, do not exceed 210 KIAS until leaving 4000. When executing VCOA, notify ATC prior to departure.

TAKEOFF OBSTACLE NOTES: **Rwy 6**, trees and buildings beginning 1374' from DER, 446' right of centerline, up to 80' AGL/1620' MSL. Vehicles on roadway beginning 3200' from DER, 957' right of centerline, up to 15' AGL/1614' MSL. Boats on the water, up to 1553' MSL. **Rwy 24**, boats on the water, up to 1553' MSL.

STEVEN A BEAN MUNI (8B0)

TAKEOFF MINIMUMS AND (OBSTACLE)

DEPARTURE PROCEDURES

ORIG 92093 (FAA)

TAKEOFF MINIMUMS: **Rwys 14, 32**, 600-2.

DEPARTURE PROCEDURE: **Rwy 14**, climbing right turn direct RQM NDB to cross at or above 4000 before proceeding on course. **Rwy 32**, climbing left turn direct RQM NDB to cross at or above 4000 before proceeding on course.

ROCHESTER, NH

SKYHAVEN (DAW)

TAKEOFF MINIMUMS AND (OBSTACLE)

DEPARTURE PROCEDURES

AMDT 6A 17005 (FAA)

DEPARTURE PROCEDURE: **Rwy 33**, climb heading 327° to 800, then climbing left turn heading 250° to intercept CON VOR/DME R-095 to 3000 before proceeding on course.

TAKEOFF OBSTACLE NOTES: **Rwy 15**, trees beginning 450' from DER, 295' left of centerline, up to 110' AGL/400' MSL. Trees and poles beginning 111' from DER, 389' right of centerline, up to 57' AGL/367' MSL. **Rwy 33**, trees beginning 200' from DER, 154' right of centerline, up to 120' AGL/443' MSL. Trees beginning 106' from DER, 160' left of centerline, up to 103' AGL/406' MSL.

12 OCT 2017 to 09 NOV 2017

12 OCT 2017 to 09 NOV 2017

**TAKEOFF MINIMUMS, (OBSTACLE) DEPARTURE PROCEDURES, AND
DIVERSE VECTOR AREA (RADAR VECTORS)**

17285

NE-1

TAKEOFF MINIMUMS, (OBSTACLE) DEPARTURE PROCEDURES, AND DIVERSE VECTOR AREA (RADAR VECTORS)

17285

ROCKLAND, ME

KNOX COUNTY RGNL (RKD)
TAKEOFF MINIMUMS AND (OBSTACLE)
DEPARTURE PROCEDURES
ADMT 4 04218 (FAA)

TAKEOFF MINIMUMS: **Rwy 3**, 300-1 or std. with a min. climb of 270' per NM to 2000, or 1100-2½ for climb in visual conditions. **Rwy 31**, std. with a min. climb of 300' per NM to 1300, or 1100-2½ for climb in visual conditions.

DEPARTURE PROCEDURE: **Rwys 3, 31**, for climb in visual conditions: cross Knox County Rgnl at or above 1000' MSL before proceeding on course.

TAKEOFF OBSTACLE NOTES: **Rwy 3**, multiple trees, bushes, obstruction lights and towers beginning 108' from DER, 433' left of centerline, up to 146' AGL/206' MSL. **Rwy 13**, multiple trees, antennas, and light poles beginning 475' from DER, 548' left of centerline, up to 80' AGL/155' MSL. **Rwy 21**, multiple trees beginning 284' from DER, 255' left of centerline, up to 65' AGL/110' MSL. **Rwy 31**, multiple trees beginning 2025' from DER, 895' right of centerline, up to 74' AGL/115' MSL.

RUTLAND, VT

SOUTHERN VERMONT RGNL (RUT)
TAKEOFF MINIMUMS AND (OBSTACLE)
DEPARTURE PROCEDURES
ADMT 4A 13038 (FAA)

TAKEOFF MINIMUMS: **Rwy 1**, std. w/ min. climb of 439' per NM to 3000, or 3600-3 for climb in visual conditions. **Rwy 13**, NA-obstacles. **Rwy 19**, std. w/ min. climb of 470' per NM to 3300, or 3600-3 for climb in visual conditions. **Rwy 31**, std. w/ min. climb of 500' per NM to 4500, or 3600-3 for climb in visual conditions.

DEPARTURE PROCEDURE: **Rwy 1**, climb on 013° course to DYO NDB, cross DYO NDB at or above 6000, if not at 6000, depart DYO NDB on bearing 325° to 6000 before proceeding on course. For climb in visual condition: cross Rutland-Southern Vermont RGNL airport at or above 4300 before proceeding on course. When executing VCOA, notify ATC prior to departure. **Rwy 19**, climb heading 194° to 1400, then climbing right turn on 025° course to DYO NDB, cross DYO NDB at or above 6000, if not at 6000, depart DYO NDB on bearing 325° to 6000 before proceeding on course. For climb in visual condition: cross Rutland-Southern Vermont RGNL airport at or above 4300 before proceeding on course. When executing VCOA, notify ATC prior to departure. **Rwy 31**, climb heading 329° to 1600, then climbing right turn on 025° course to DYO NDB, cross DYO NDB at or above 6000, if not at 6000, depart DYO NDB on bearing 325° to 6000 before proceeding on course. For climb in visual condition: cross Rutland-Southern Vermont RGNL airport at or above 4300 before proceeding on course. When executing VCOA, notify ATC prior to departure.

TAKEOFF OBSTACLE NOTES: **Rwy 1**, tree 79' from DER, 424' right of centerline, 80' AGL/805' MSL. **Rwy 19**, trees beginning 167' from DER, 305' right of centerline, up to 42' AGL/843' MSL. Trees beginning 393' from DER, 175' left of centerline, up to 100' AGL/967' MSL. **Rwy 31**, trees beginning 334' from DER, 94' left of centerline, up to 100' AGL/1319' MSL. Trees beginning 885' from DER, 201' right of centerline, up to 85' AGL/827' MSL.

SANFORD, ME

SANFORD SEACOAST RGNL (SFM)
TAKEOFF MINIMUMS AND (OBSTACLE)
DEPARTURE PROCEDURES
ADMT 3A 13066 (FAA)

TAKEOFF MINIMUMS: **Rwy 32**, 300-1¼ or std. w/min. climb of 375' per NM to 500.

DEPARTURE PROCEDURE: **Rwy 25**, climb heading 255° to 1100 before turning right. **Rwy 32**, climb heading 331° to 1600 before turning left.

TAKEOFF OBSTACLE NOTES: **Rwy 7**, vehicles on road, antenna, light support structure, transmission tower, and trees beginning 62' from DER, 4' left of centerline, up to 69' AGL/309' MSL. Trees beginning 220' from DER, 19' right of centerline, up to 72' AGL/311' MSL. **Rwy 14**, trees beginning 149' from DER, 320' left of centerline, up to 55' AGL/294' MSL. Bushes and trees beginning 93' from DER, 260' right of centerline, up to 81' AGL/320' MSL. **Rwy 25**, trees beginning 118' from DER, 511' left of centerline, up to 60' AGL/379' MSL. Trees beginning 245' from DER, 476' right of centerline, up to 82' AGL/321' MSL. **Rwy 32**, trees beginning 763' from DER, 58' left of centerline, up to 77' AGL/396' MSL. Pole and trees beginning 332' from DER, 59' right of centerline, up to 92' AGL/381' MSL. Trees 3269' from DER, 1226' left of centerline, up to 72' AGL/401' MSL. Trees 4667' from DER, 1225' left of centerline, up to 82' AGL/431' MSL. Trees 5473' from DER, 1013' left of centerline, up to 67' AGL/416' MSL.

SOUTHBRIDGE, MA

SOUTHBRIDGE MUNI (3B0)
TAKEOFF MINIMUMS AND (OBSTACLE)
DEPARTURE PROCEDURES
ADMT 3 10070 (FAA)

TAKEOFF MINIMUMS: **Rwy 2**, 300-1½ or std. with a min. climb of 370' per NM to 1000.

DEPARTURE PROCEDURE: **Rwy 2**, climb heading 022° to 1800 before turning right.

TAKEOFF OBSTACLE NOTES: **Rwy 2**, trees beginning 597' from DER, 58' left of centerline, up to 100' AGL/913' MSL. Tree 812' from DER, 197' right of centerline, 100' AGL/791' MSL. **Rwy 20**, trees beginning 70' from DER, 309' right of centerline, up to 78' AGL/740' MSL. Tree 1044' from DER, 395' left of centerline, 43' AGL/732' MSL.

12 OCT 2017 to 09 NOV 2017

12 OCT 2017 to 09 NOV 2017

TAKEOFF MINIMUMS, (OBSTACLE) DEPARTURE PROCEDURES, AND DIVERSE VECTOR AREA (RADAR VECTORS)

17285

NE-1

TAKEOFF MINIMUMS, (OBSTACLE) DEPARTURE PROCEDURES, AND DIVERSE VECTOR AREA (RADAR VECTORS)

17285

SPRINGFIELD, VT

HARTNESS STATE (SPRINGFIELD) (VSF)
TAKEOFF MINIMUMS AND (OBSTACLE)
DEPARTURE PROCEDURES
AMDT 3 11181 (FAA)

TAKEOFF MINIMUMS: **Rwy 5**, 800-3 w/min. climb of 649' per NM to 4500 or 2800-3 for climb in visual conditions. **Rwy 11**, 2800-3 for climb in visual conditions. **Rwy 29**, 800-2½ w/min. climb of 490' per NM to 4600 or std. w/min. climb of 630' per NM to 3400 or 2800-3 for climb in visual conditions. **Rwy 23**, std. w/min. climb of 400' per NM to 2800 or 2800-3 for climb in visual conditions.

DEPARTURE PROCEDURE: **Rwy 5**, for climb in visual conditions cross Hartness State (Springfield) Airport at or above 3200 MSL before proceeding on course.

Rwy 11, for climb in visual conditions cross Hartness State (Springfield) Airport at or above 3200 MSL before proceeding on course. **Rwy 23**, climb heading 230° to 2800 before proceeding on course, or for climb in visual conditions cross Hartness State (Springfield) Airport at or above 3200 MSL before proceeding on course. **Rwy 29**, climb heading 294° to 1200 before proceeding on course, or for climb in visual conditions cross Hartness State (Springfield) Airport at or above 3200 MSL before proceeding on course.

TAKEOFF OBSTACLE NOTES: **Rwy 5**, trees beginning 28' from DER, 187' right of centerline, up to 80' AGL/1344' MSL. Trees beginning 44' from DER, 499' left of centerline, up to 80' AGL/1291' MSL. **Rwy 23**, trees beginning 9' from DER, 339' right of centerline, up to 80' AGL/679' MSL. Trees beginning 10' from DER, 265' left of centerline, up to 80' AGL/639' MSL. **Rwy 29**, trees beginning 22' from DER, 470' left of centerline, up to 80' AGL/639' MSL. Vehicle on road 1409' from DER, 845' right of centerline, up to 17' AGL/616' MSL. Trees beginning 1614' from DER, 924' right of centerline, up to 80' AGL/699' MSL.

STOW, MA

MINUTE MAN AIRFIELD (6B6)
TAKEOFF MINIMUMS AND (OBSTACLE)
DEPARTURE PROCEDURES
AMDT 3 10266 (FAA)

TAKEOFF MINIMUMS: **Rwy 3**, 400-2¾ or std. w/min. climb of 420' per NM to 700. **Rwy 12, 30**, NA-Environmental. **Rwy 21**, 400-2¾ or std. w/min. climb of 600' per NM to 600.

DEPARTURE PROCEDURE: **Rwy 3**, climb heading 032° to 800 before proceeding on course. **Rwy 21**, climb heading 212° to 1600 before proceeding on course.

TAKEOFF OBSTACLE NOTES: **Rwy 3**, trees beginning 9' from DER, 244' right of centerline, up to 80' AGL/434' MSL. Trees beginning 246' from DER, 168' left of centerline, up to 80' AGL/652' MSL. **Rwy 21**, trees beginning 11' from DER, 188' right of centerline, up to 80' AGL/385' MSL. Trees beginning 11' from DER, 198' left of centerline, up to 80' AGL/365' MSL. Trees beginning 529' from DER, left and right of centerline, up to 80' AGL/574' MSL. Tower 1.6 NM from DER, 2483' left of centerline, 118' AGL/511' MSL.

TAUNTON, MA

TAUNTON MUNI-KING FIELD (TAN)
TAKEOFF MINIMUMS AND (OBSTACLE)
DEPARTURE PROCEDURES
AMDT 2 08045 (FAA)

TAKEOFF MINIMUMS: **Rwys 4, 22**, NA-Turf runway. **Rwy 12**, 200-1½ or standard with minimum climb of 362' per NM to 300. **Rwy 30**, 200-1 or std. w/min climb of 291' per NM to 300.

TAKEOFF OBSTACLE NOTES: **Rwy 12**, Trees and terrain beginning 61' from DER, 128' right of centerline, up to 80' AGL/229' MSL. Trees and terrain beginning 93' from DER, 204' left of centerline, up to 80' AGL/159' MSL. **Rwy 30**, Terrain beginning 147' from DER, 284' right of centerline, 43' MSL. Trees and terrain beginning 1044' from DER, 320' left of centerline, up to 80' AGL/199' MSL.

VINEYARD HAVEN, MA

MARTHAS VINEYARD (MVY)
TAKEOFF MINIMUMS AND (OBSTACLE)
DEPARTURE PROCEDURES
AMDT 1 11013 (FAA)

TAKEOFF OBSTACLE NOTES: **Rwy 6**, trees beginning 585' from DER, 492' left of centerline, up to 100' AGL/159' MSL. Trees beginning 707' from DER, 543' right of centerline, up to 100' AGL/159' MSL. **Rwy 15**, trees beginning 276' from DER, 156' left of centerline, up to 100' AGL/159' MSL. Pole 411' from DER, 475' right of centerline. 45' AGL/97' MSL. Trees beginning 430' from DER, 79' right of centerline, up to 100' AGL/159' MSL. **Rwy 24**, trees beginning 594' from DER, 201' left of centerline, up to 100' AGL/149' MSL. Trees beginning 606' from DER, 442' right of centerline, up to 100' AGL/159' MSL. Building 791' from DER, 266' left of centerline, 25' AGL/75' MSL. **Rwy 33**, trees beginning 36' from DER, 120' left of centerline, up to 100' AGL/179' MSL. Trees beginning 67' from DER, 75' right of centerline, up to 100' AGL/169' MSL.

WATERVILLE, ME

WATERVILLE ROBERT LAFLEUR (WVL)
TAKEOFF MINIMUMS AND (OBSTACLE)
DEPARTURE PROCEDURES
ORIG 82133 (FAA)
TAKEOFF MINIMUMS: **Rwys 14, 32**, 300-1.

WEST DOVER, VT

DEERFIELD VALLEY RGNL (4V8)
TAKEOFF MINIMUMS AND (OBSTACLE)
DEPARTURE PROCEDURES
AMDT 2 11181 (FAA)

TAKEOFF MINIMUMS: **Rwy 1**, 700-3 w/min. climb of 430' per NM to 4400. **Rwy 19**, std. w/min. climb of 300' per NM to 3900.

DEPARTURE PROCEDURE: **Rwy 1**, climb heading 005° to 4400 before turning west. **Rwy 19**, climb heading 185° to 3900 before turning west.

TAKEOFF OBSTACLE NOTES: **Rwy 1**, trees beginning 31' from DER, left and right of centerline, up to 90' AGL/2640' MSL. Rising terrain beginning 1.2 NM from DER, left and right of centerline, up to 4140' MSL. **Rwy 19**, trees beginning 16' from DER, left and right of centerline, up to 90' AGL/2078' MSL.

TAKEOFF MINIMUMS, (OBSTACLE) DEPARTURE PROCEDURES, AND DIVERSE VECTOR AREA (RADAR VECTORS)

17285

NE-1

TAKEOFF MINIMUMS, (OBSTACLE) DEPARTURE PROCEDURES, AND DIVERSE VECTOR AREA (RADAR VECTORS)

17285

WESTERLY, RI

WESTERLY STATE (WST)

TAKEOFF MINIMUMS AND (OBSTACLE)
DEPARTURE PROCEDURES

AMDT 3 11153 (FAA)

TAKEOFF MINIMUMS: **Rwy 25**, 300-1

TAKEOFF OBSTACLE NOTES: **Rwy 7**, trees beginning 36' from DER 57' right of centerline, up to 70' AGL/120' MSL. Tree 789' from DER, 332' left of centerline, 41' AGL/100' MSL.

Rwy 14, trees beginning 124' from DER, 31' right of centerline, up to 61' AGL/173' MSL. Trees beginning 443' from DER, 73' left of centerline, up to 54' AGL/163' MSL. Bush 327' from DER, 3' left of centerline, 19' AGL/98' MSL. **Rwy 25**, trees beginning 171' from DER, 119' right of centerline, up to 62' AGL/121' MSL. Tank 2957' from DER, 1038' left of centerline, 126' AGL/250' MSL. Obstruction light on pole 50' from DER, 496' left of centerline, 13' AGL/92' MSL. Trees beginning 439' from DER, 93' left of centerline, up to 61' AGL/184' MSL. **Rwy 32**, trees beginning 32' from DER, 46' right of centerline, up to 84' AGL/173' MSL. Trees beginning 152' from DER, 41' left of centerline, up to 85' AGL/174' MSL.

WESTFIELD/SPRINGFIELD, MA

WESTFIELD-BARNES RGNL (BAF)

TAKEOFF MINIMUMS AND (OBSTACLE)
DEPARTURE PROCEDURES

AMDT 4A 13122 (FAA)

TAKEOFF MINIMUMS: **Rwy 2**, 300-1½ or std. w/ min. climb of 204' per NM to 600, or alternatively, with standard TAKEOFF minimums a normal 200'/NM climb gradient, TAKEOFF must occur no later than 1200' prior to DER. **Rwy 15**, 400-2 or std. w/ min. climb of 404' per NM to 700. **Rwy 33**, std. w/ min. climb of 323' per NM to 2000, or 1500- 2½ for climb in visual conditions.

DEPARTURE PROCEDURE: **Rwy 2**, climb heading 024° to 1700 before proceeding on course. **Rwy 15**, climb heading 154° to 1300 before proceeding on course. **Rwy 20**, climb heading 204° to 1500 before proceeding on course. **Rwy 33**, climb heading 334° to 1900 before proceeding on course, or for climb in visual conditions: cross Westfield-Barnes Rgnl airport at or above 1600 MSL before proceeding on course.

TAKEOFF OBSTACLE NOTES: **Rwy 2**, trees beginning 1186' from DER, 144' left of centerline, up to 100' AGL/385' MSL. Trees beginning 1098' from DER, 431' right of centerline, up to 100' AGL/465' MSL. **Rwy 15**, trees beginning 245' from DER, 74' left of centerline, up to 100' AGL/576' MSL. Bush 245' from DER, 285' left of centerline, up to 20' AGL/265' MSL. Obstruction light on tank 4773' from DER, 1315' left of centerline, 190' AGL/440' MSL. Trees beginning 360' from DER, 8' right of centerline, up to 100' AGL/508' MSL. **Rwy 20**, trees beginning 18' from DER, 47' left of centerline, up to 100' AGL/321' MSL. Trees beginning 541' from DER, 138' right of centerline, up to 100' AGL/ 329' MSL. **Rwy 33**, trees and bush beginning 151' from DER, 138' left of centerline, up to 100' AGL/383' MSL. Obstruction light on radio tower and towers beginning 1.50 NM from DER, 2641' left of centerline, up to 305' AGL/545' MSL. Trees beginning 311' from DER, 35' right of centerline, up to 100' AGL/ 513' MSL.

WESTOVER ARB/METROPOLITAN (KCEF)

SPRINGFIELD/CHICOPEE, MA

TAKEOFF MINIMUMS AND (OBSTACLE)
DEPARTURE PROCEDURES

AMDT 2, 17257

TAKE-OFF MINIMUMS: **Rwy 5**, std with min climb of 238 ft/NM to 1900. **Rwy 15**, std with min climb of 214 ft/NM to 1900. **Rwy 23**, std with min climb of 206 ft/NM to 1900.

Rwy 33, std with min climb of 308 ft/NM to 1900.

TAKE-OFF OBSTACLES: **Rwy 15**, trees 1380' from DER, 40' left of cntrln, 60' AGL/279' MSL to 3723' from DER, 1366' left of cntrln, 121' AGL/322' MSL. Tree 1346' from DER, 5' right of cntrln, 60' AGL/279' MSL to 3433' from DER, 789' right of cntrln, 124' AGL/324' MSL. Pylon 6019' from DER, 2142' left of cntrln, 127' AGL/381' MSL.

Rwy 23, taxiing aircraft 87' from DER, 466' right of cntrln, 32' AGL/267' MSL. Pylon 4574' from DER, 1570' left of cntrln, 110' AGL/319' MSL. Pylon 5346' from DER, 1730' right of cntrln, 122' AGL/320' MSL. Tree 1707' from DER, 208' left of cntrln, 43' AGL/289' MSL. Tree 1739' from DER, 199' right of cntrln, 45' AGL/291' MSL. Tree 1194' from DER, 729' left of cntrln, 51' AGL/266' MSL. Pylon 4131' from DER, 1936' left of cntrln, 137' AGL/352' MSL. **Rwy 33**, tree line 2847' from DER, 910' left of cntrln, 99' AGL/346' MSL. Tree line 2793' from DER, 215' left of cntrln, 99' AGL/348' MSL.

WHITEFIELD, NH

MOUNT WASHINGTON RGNL (HIE)

TAKEOFF MINIMUMS AND (OBSTACLE)
DEPARTURE PROCEDURES

AMDT 5 11097 (FAA)

TAKEOFF MINIMUMS: **Rwy 10**, std. w/ min. climb of 670' per NM to 5100 or 3100-3 for climb in visual conditions.

Rwy 28, std. w/ min. climb of 540' per NM to 2300, or 400-2½ with minimum climb of 340' per NM to 2800, or 3100-3 for climb in visual conditions.

DEPARTURE PROCEDURE: **Rwy 10**, climbing left turn direct GMA NDB thence ...
or for climb in visual conditions, cross Mount Washington RGNL Airport at or above 4000' MSL, then on course 250° to GMA NDB, thence ...

Rwy 28, climb direct GMA NDB thence ... or for climb in visual conditions, cross Mount Washington RGNL Airport at or above 4000' MSL, then on course 250° to GMA NDB, thence ...
... climb in GMA NDB holding pattern (hold West, left turns, 104° bearing inbound) to cross GMA NDB at or above 5500' MSL before proceeding on course.

TAKEOFF OBSTACLE NOTES: **Rwy 10**, train beginning 7' from DER, 467' left of centerline, up to 23' AGL/1125' MSL. Bush 52' from DER, 373' right of centerline, 10' AGL/1082' MSL. Trees beginning 61' from DER, left and right of centerline, up to 100' AGL/1418' MSL. Rising terrain beginning 153' from DER, left and right of centerline, up to 1185' MSL. Poles beginning 686' from DER, 379' left of centerline, 45' AGL/1128' MSL. **Rwy 28**, train beginning 7' from DER, 469' right of centerline, up to 23' AGL/1085' MSL. Vehicles on road beginning 8' from DER, left and right of centerline, up to 15' AGL/1097' MSL. Rising terrain beginning 213' from DER, 485' left of centerline, up to 1303' MSL. Trees beginning 269' from DER, left and right of centerline, up to 100' AGL/1438' MSL.

12 OCT 2017 to 09 NOV 2017

12 OCT 2017 to 09 NOV 2017

TAKEOFF MINIMUMS, (OBSTACLE) DEPARTURE PROCEDURES, AND DIVERSE VECTOR AREA (RADAR VECTORS)

17285

NE-1

TAKEOFF MINIMUMS, (OBSTACLE) DEPARTURE PROCEDURES, AND DIVERSE VECTOR AREA (RADAR VECTORS)

17285

WILLIMANTIC, CT

WINDHAM (IJD)

TAKEOFF MINIMUMS AND (OBSTACLE)
DEPARTURE PROCEDURES

AMDT 6 14149 (FAA)

TAKEOFF MINIMUMS: **Rwy 9**, std. w/ min. climb of 411' per NM to 900, or 1100-2½ for climb in visual conditions. **Rwy 18**, 300-2 or std. w/ min. climb of 434' per NM to 700. **Rwy 27**, 300-2 or std. w/ min. climb of 270' per NM to 800. **Rwy 36**, std. w/ min. climb of 405' per NM to 700, or 1100-2½ for climb in visual conditions.

DEPARTURE PROCEDURE: **Rwy 9**, climb heading 089° to 900 before proceeding on course, or for climb in visual conditions cross Windham Airport at or above 1200 before proceeding on course. When executing VCOA, notify ATC prior to departure. **Rwy 18**, climb heading 170° to 1000 before turning right. **Rwy 27**, climb heading 269° to 800 before proceeding on course. **Rwy 36**, climb heading 358° to 700 before proceeding on course, or for climb in visual conditions cross Windham Airport at or above 1200 before proceeding on course. When executing VCOA, notify ATC prior to departure.

TAKEOFF OBSTACLE NOTES: **Rwy 9**, vehicle on road beginning 22' from DER, 461' right of centerline, up to 15' AGL/292' MSL. Trees beginning 29' from DER, 92' right of centerline, up to 52' AGL/301' MSL. Vehicle on road beginning 66' from DER, 188' left of centerline, up to 15' AGL/292' MSL. Fence 75' from DER, 196' right of centerline, 6' AGL/277' MSL. Poles beginning 284' from DER, left and right of centerline, up to 51' AGL/322' MSL. Trees beginning 466' from DER, 229' right of centerline, up to 88' AGL/349' MSL. Vehicle on road beginning 1110' from DER, left and right of centerline, up to 15' AGL/299' MSL. Trees beginning 1147' from DER, left and right of centerline, up to 80' AGL/376' MSL. Catenary beginning 1305' from DER, 126' right of centerline, up to 41' AGL/310' MSL. Trees beginning 4005' from DER, left and right of centerline, up to 80' AGL/587' MSL. Trees beginning 1.1 NM from DER, left and right of centerline, up to 80' AGL/668' MSL. **Rwy 18**, vehicle in parking lot 17' from DER, 264' left of centerline, 15' AGL/264' MSL. Trees beginning 47' from DER, 66' right of centerline, up to 80' AGL/315' MSL. Trees beginning 123' from DER, 45' left of centerline, up to 80' AGL/326' MSL. Pole 413' from DER, 147' left of centerline, 30' AGL/279' MSL. Trees beginning 2097' from DER, 19' right of centerline, up to 80' AGL/412' MSL. Trees beginning 2901' from MSL, 81' left of centerline, up to 80' AGL/418' MSL. Trees beginning 1.6 NM from DER, 2908' left of centerline, up to 80' AGL/516' MSL. **Rwy 27**, trees beginning 122' from DER, 117' left of centerline, up to 63' AGL/272' MSL. Trees beginning 134' from DER, 126' right of centerline, up to 55' AGL/264' MSL. Trees beginning 193' from DER, left and right of centerline, up to 82' AGL/317' MSL. Trees beginning 2981' from DER, 442' right of centerline, up to 83' AGL/539' MSL. **Rwy 36**, tree 31' from DER, 502' left of centerline, 93' AGL/312' MSL. Trees beginning 130' from DER, 157' right of centerline, up to 99' AGL/329' MSL. Trees beginning 195' from DER, 22' left of centerline, up to 103' AGL/316' MSL. Trees beginning 4742' from DER, 1397' left of centerline, up to 80' AGL/546' MSL.

WINDSOR LOCKS, CT

BRADLEY INTL (BDL)

TAKEOFF MINIMUMS AND (OBSTACLE)
DEPARTURE PROCEDURES

AMDT 3 10154 (FAA)

TAKEOFF MINIMUMS: **Rwy 33**, std. w/ min. climb of 326' per NM to 1000, or 1200-2½ for climb in visual conditions.

DEPARTURE PROCEDURE: **Rwy 1**, Climb heading 013° to 1000 before turning left. **Rwy 33**, Climb heading 328° to 1000 or for climb in visual conditions: cross Bradley Intl airport at or above 1200 before proceeding on course.

TAKEOFF OBSTACLE NOTES: **Rwy 1**, vehicle on roadway 342' from DER, 564' left of centerline, 15' AGL/184' MSL. Trees beginning 441' from DER, 493' left of centerline, up to 100' AGL/269' MSL. Trees beginning 1844' from DER, 45' right of centerline, up to 100' AGL/299' MSL. **Rwy 6**, trees beginning 21' from DER, 464' left of centerline, up to 100' AGL/249' MSL. Trees beginning 1956' from DER, 921' right of centerline, up to 100' AGL/239' MSL. **Rwy 15**, vehicle on roadway 531' from DER, 606' left of centerline, up to 15' AGL/186' MSL. Trees beginning 2341' from DER, 767' left of centerline, up to 100' AGL/244' MSL. Vehicle on roadway 429' from DER, 572' right of centerline, up to 15' AGL/184' MSL. Tree 1520' from DER, 786' right of centerline, up to 100' AGL/259' MSL. **Rwy 24**, trees beginning 3066' from DER, 599' left of centerline, up to 100' AGL/269' MSL. Obstruction light on fence 1239' from DER, 784' left of centerline, up to 45' AGL/215' MSL. Trees beginning 2345' from DER, 489' right of centerline, up to 100' AGL/299' MSL. **Rwy 33**, trees beginning 1590' from DER, 275' left of centerline, up to 100' AGL/256' MSL. Tower 2.4 NM from DER, 3534' left of centerline, 104' AGL/774' MSL. Trees beginning 1618' from DER, 264' right of centerline, up to 100' AGL/263' MSL.

WISCASSET, ME

WISCASSET (IWI)

TAKEOFF MINIMUMS AND (OBSTACLE)
DEPARTURE PROCEDURES

AMDT 2 10154 (FAA)

TAKEOFF MINIMUMS: **Rwy 7**, 300-2 or std. with a min. climb of 232' per NM to 400, or alternatively, with standard TAKEOFF minimums and a normal 200' per NM climb gradient, TAKEOFF must occur no later than 2100' prior to DER.

TAKEOFF OBSTACLE NOTES: **Rwy 7**, trees beginning 115' from DER, right and left of centerline, up to 80' AGL/149' MSL. Vehicle on road, 537' from DER, right and left of centerline, 17' AGL/76' MSL. T-L towers beginning 3144' from DER, right and left of centerline, 141' AGL/206' MSL. Trees beginning 3643' from DER, 1311' right of centerline, up to 80' AGL/179' MSL. Pole 400' from DER, 500' left of centerline, 35' AGL/85' MSL. Trees beginning 1.38 NM from DER, 285' right of centerline, up to 80' AGL/299' MSL. **Rwy 25**, vehicles on roads beginning 30' from DER, right and left of centerline, 15' AGL/84' MSL. Trees beginning 739' from DER, 111' left of centerline, up to 80' AGL/149' MSL. Trees beginning 501' from DER, 252' right of centerline, up to 80' AGL/189' MSL.

12 OCT 2017 to 09 NOV 2017

12 OCT 2017 to 09 NOV 2017

TAKEOFF MINIMUMS, (OBSTACLE) DEPARTURE PROCEDURES, AND DIVERSE VECTOR AREA (RADAR VECTORS)

17285

NE-1


TAKEOFF MINIMUMS, (OBSTACLE) DEPARTURE PROCEDURES, AND


DIVERSE VECTOR AREA (RADAR VECTORS)

17285

WORCESTER, MA

WORCESTER RGNL (ORH)

TAKEOFF MINIMUMS AND (OBSTACLE)

DEPARTURE PROCEDURES

AMDT 8 10070 (FAA)

TAKEOFF MINIMUMS: **Rwy 29**, 300-1 or std. with a min. climb of 323' per NM to 1300. **Rwy 33**, 700-3 or std. with a min. climb of 394' per NM to 2000.

DEPARTURE PROCEDURE: **Rwy 29**, climb heading 289° to 1600 before turning right. **Rwy 33**, climb heading 333° to 2000 before turning right

TAKEOFF OBSTACLE NOTES: **Rwy 15**, trees beginning 130' from DER, 333' right of centerline, up to 100' AGL/1011' MSL. Trees beginning 63' from DER, 250' left of centerline, up to 100' AGL/1003' MSL. **Rwy 29**, trees beginning 55' from DER, 464' right of centerline, up to 100' AGL/1192' MSL. Trees beginning 617' from DER, 621' left of centerline, up to 100' AGL/1109' MSL. **Rwy 33**, trees beginning 212' from DER, 124' left of centerline, up to 100' AGL/1043' MSL. Trees beginning 499' from DER, 339' right of centerline, up to 100' AGL/1418' MSL. Rising terrain beginning 1.5 NM from DER, 1491' right of centerline, up to 1385' MSL. Rod on pole 1.3 NM from DER, 1325' left of centerline, up to 76' AGL/1224' MSL. Rod on pole 1.4 NM from DER, 195' right of centerline, up to 90' AGL/1257' MSL. Rod on pole 1.6 NM from DER, 2120' right of centerline, up to 107' AGL/1402' MSL. Tower 1.8 NM from DER, 3415' right of centerline, up to 106' AGL/1500' MSL. Tower 2.3 NM from DER, 4087' right of centerline, up to 366' AGL/1674' MSL.

12 OCT 2017 to 09 NOV 2017

12 OCT 2017 to 09 NOV 2017

17285

NE-1