

RNAV (GPS) RWY 9

MOCKVILLE/ TWIN LAKES (8A7)

APP CRS 094°	Rwy Idg 2943
	TDZE 818
	Apt Elev 818

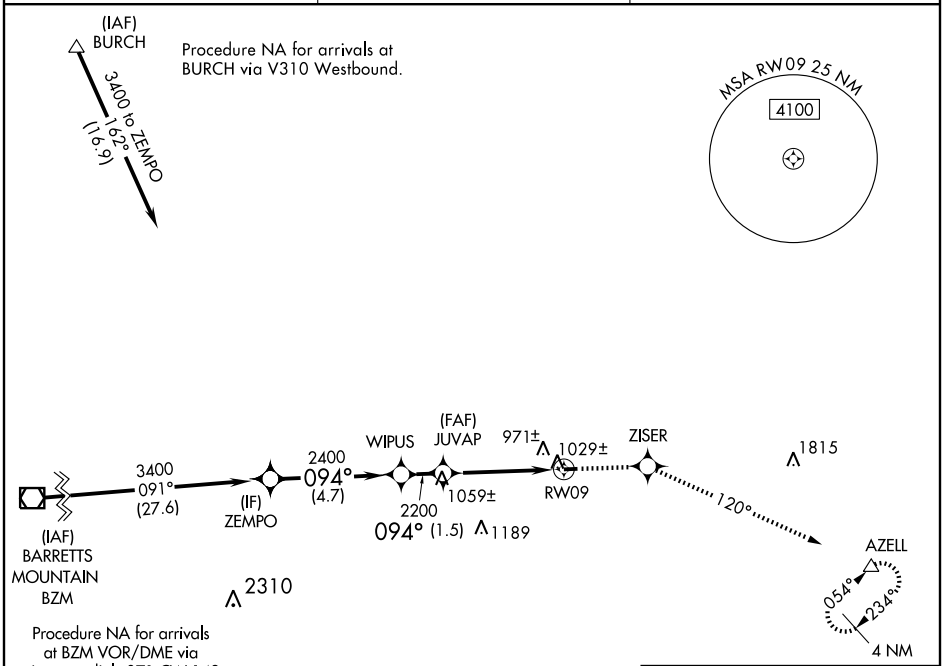
NA Use Davidson County altimeter setting; if not received, use Smith Reynolds altimeter setting and increase all MDAs 40 feet. DME/DME RNP-0.3 NA. Visibility reduction by helicopters NA.

MISSED APPROACH: Climb to 3000 direct ZISER and via 120° track to AZELL and hold.

DAVIDSON COUNTY AWOS-3
119.825

GREENSBORO APP CON
124.35 269.225

UNICOM
122.7 (CTAF)

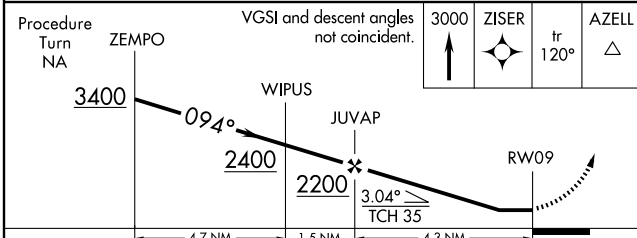


SE-2, 31 MAY 2012 to 28 JUN 2012

SE-2, 31 MAY 2012 to 28 JUN 2012



ELEV 818	TDZE 818
----------	----------



CATEGORY	A	B	C	D
LNVA MDA	1320-1 502 (600-1)		1320-1½ 502 (600-1½)	NA
CIRCLING	1400-1 582 (600-1)		1400-1½ 582 (600-1½)	NA

