

APP CRS	Rwy Idg	5152
215°	TDZE	1372
	Apt Elev	1372

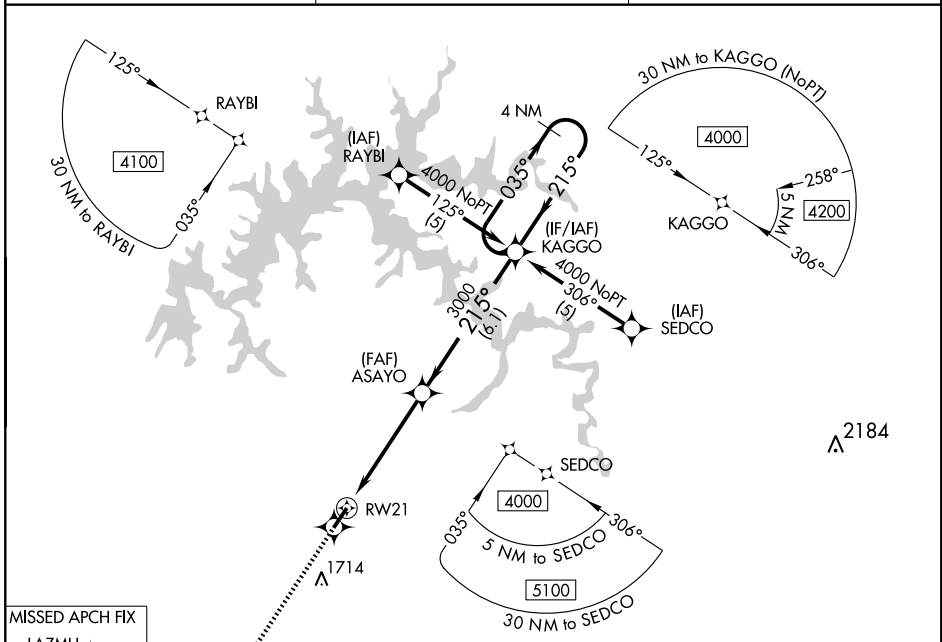
RNAV (GPS) RWY 21

LIVINGSTON MUNI (8A.3)

NA DME/DME RNP-0.3 NA. Visibility reduction by helicopters NA. When local altimeter setting not received, use Crossville altimeter setting and increase all MDA 140 feet; and LNAV Cat C/D visibilities ½ mile, Circling Cat B visibility ¼ mile and Circling Cat C/D visibilities ½ mile.

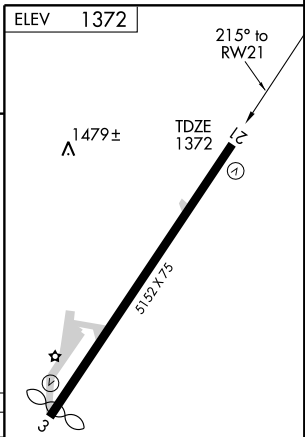
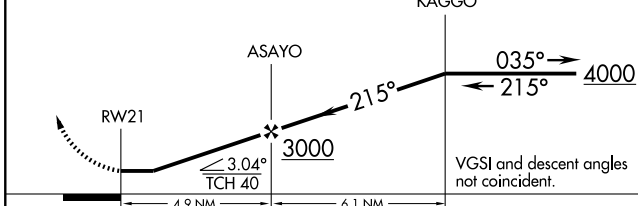
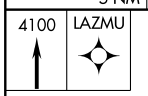
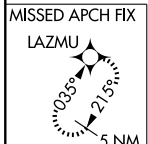
MISSED APPROACH: Climb to 4100 direct LAZMU and hold.

AWOS-3 126.175	INDIANAPOLIS CENTER 124.625 371.925	UNICOM 122.8 (CTAF)
--------------------------	---	-------------------------------



SE-1, 31 MAY 2012 to 28 JUN 2012

SE-1, 31 MAY 2012 to 28 JUN 2012



CATEGORY	A	B	C	D
LNAV MDA	1760-1	388 (400-1)		1760-1¼ 388 (400-1¼)
CIRCLING	1860-1 488 (500-1)	2080-1 708 (800-1)	2080-2 708 (800-2)	2080-2¼ 708 (800-2¼)

MIRL Rwy 3-21
REIL Rwy 3 and 21

APP CRS	Rwy Idg	5152
035°	TDZE	1366
	Apt Elev	1372

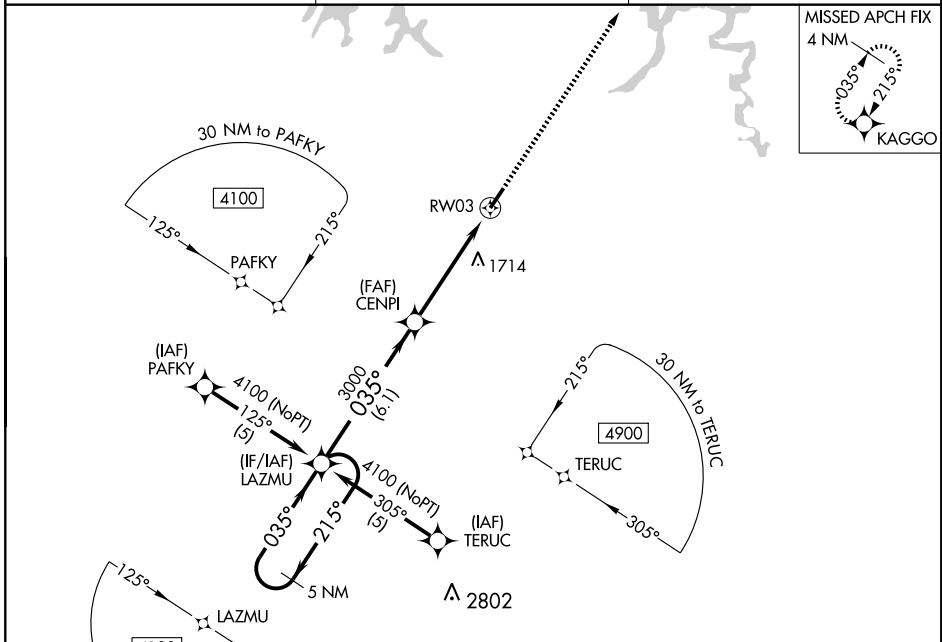
RNAV (GPS) RWY 3

LIVINGSTON MUNI (8A.3)

NA DME/DME RNP-0.3 NA. Visibility reduction by helicopters NA. When local altimeter setting not received, use Crossville altimeter setting and increase all MDA 140 feet, and increase LNAV Cat C/D visibilities ½ mile, Circling Cat B visibility ¼ mile and Circling Cat C/D visibilities ½ mile.

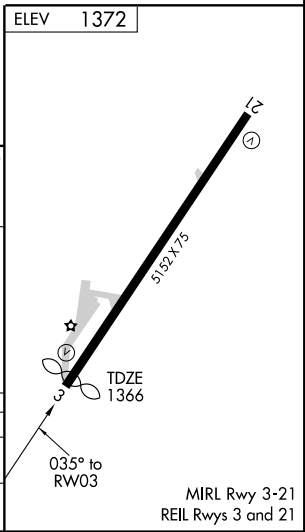
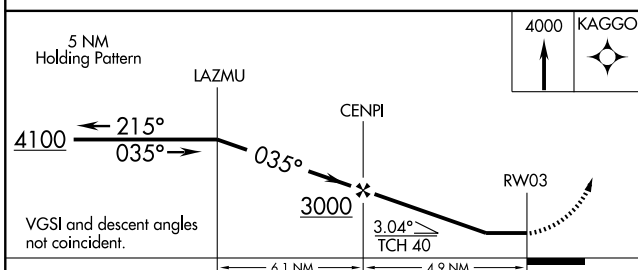
MISSED APPROACH: Climb to 4000 direct KAGGO and hold.

AWOS-3 126.175	INDIANAPOLIS CENTER 124.625 371.925	UNICOM 122.8 (CTAF)
---------------------------------	--	--------------------------------------



SE-1, 31 MAY 2012 to 28 JUN 2012

SE-1, 31 MAY 2012 to 28 JUN 2012



CATEGORY	A	B	C	D
LNAV MDA	1960-1	594 (600-1)	1960-1½ 594 (600-1½)	1960-1¾ 594 (600-1¾)
CIRCLING	1960-1 588 (600-1)	2080-1 708 (800-1)	2080-2 708 (800-2)	2080-2¼ 708 (800-2¼)

MIRL Rwy 3-21
REIL Rwys 3 and 21

VORTAC LVT 108.4 Chan 21	APP CRS 216°	Rwy Idg TDZE 1372 Apt Elev 1372
--	------------------------	---

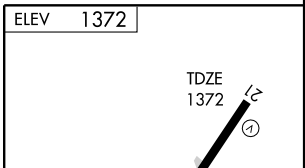
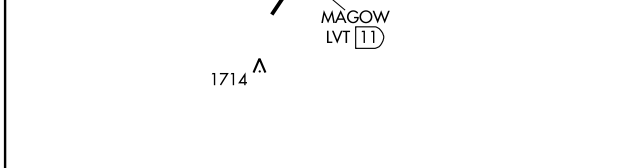
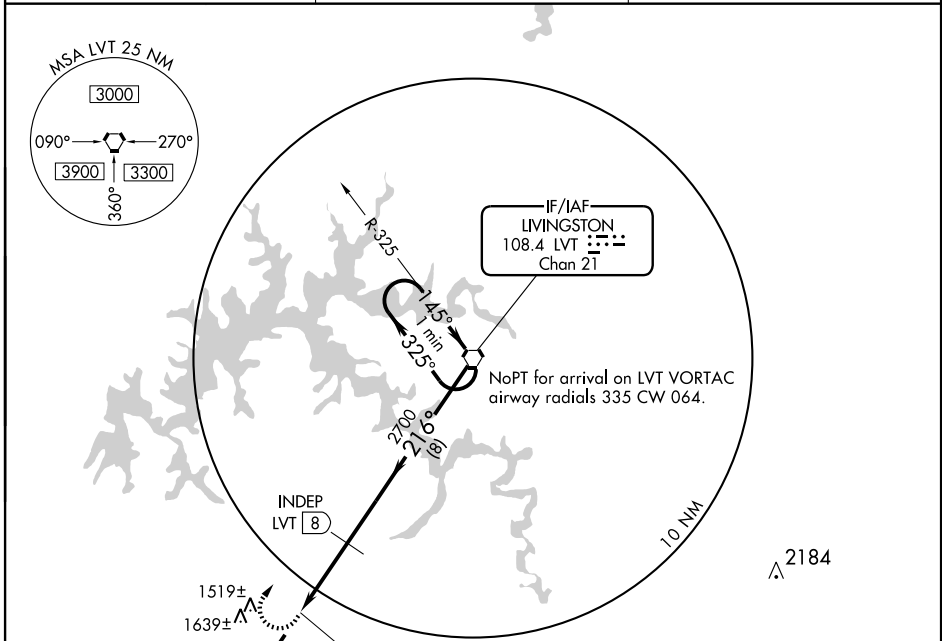
VOR/DME RWY 21

LIVINGSTON MUNI (8A.3)

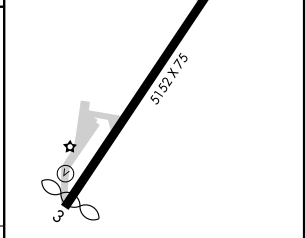
NA Visibility reduction by helicopters NA. When local altimeter setting not received, use Crossville altimeter setting and increase all MDA 140 feet and increase S-21 Cat C visibility 1/2 mile, S-21 Cat D visibility and Circling Cat C/D visibilities 1/2 mile.

MISSED APPROACH: Climbing right turn to 4000 direct LVT VORTAC and hold.

AWOS-3 126.175	INDIANAPOLIS CENTER 124.625 371.925	UNICOM 122.8 (CTAF)
--------------------------	---	-------------------------------



CATEGORY	A	B	C	D
S-21	1880-1¼	508 (600-1¼)	1880-1½	508 (600-1½)
CIRCLING	1880-1¼ 508 (600-1¼)	2080-1¼ 708 (800-1¼)	2080-2 708 (800-2)	2080-2¼ 708 (800-2¼)



CATEGORY	A	B	C	D
S-21	1880-1¼	508 (600-1¼)	1880-1½	508 (600-1½)
CIRCLING	1880-1¼ 508 (600-1¼)	2080-1¼ 708 (800-1¼)	2080-2 708 (800-2)	2080-2¼ 708 (800-2¼)

MIRL Rwy 3-21
REIL Rwy 3 and 21

SE-1, 31 MAY 2012 to 28 JUN 2012

SE-1, 31 MAY 2012 to 28 JUN 2012

TAKE-OFF MINIMUMS AND (OBSTACLE) DEPARTURE PROCEDURES

12152

INSTRUMENT APPROACH PROCEDURE CHARTS

IFR TAKE-OFF MINIMUMS AND (OBSTACLE) DEPARTURE PROCEDURES

Civil Airports and Selected Military Airports

ALL USERS: Airports that have Departure Procedures (DPs) designed specifically to assist pilots in avoiding obstacles during the climb to the minimum enroute altitude, and/or airports that have civil IFR take-off minimums other than standard, are listed below. Take-off Minimums and Departure Procedures apply to all runways unless otherwise specified. Altitudes, unless otherwise indicated, are minimum altitudes in MSL.

DPs specifically designed for obstacle avoidance are referred to as Obstacle Departure Procedures (ODPs) and are described below in text, or published separately as a graphic procedure. If the (Obstacle) DP is published as a graphic procedure, its name will be listed below, and it can be found in either this volume (civil), or the applicable military volume, as appropriate. Users will recognize graphic obstacle DPs by the term "(OBSTACLE)" included in the procedure title; e.g., TETON TWO (OBSTACLE). If not specifically assigned a departure procedure (i.e., ODP, SID, or radar vector) as part of an IFR clearance, an ODP may be required to be flown for obstacle clearance, even though not specifically stated in the IFR clearance. When doing so in this manner, ATC should be informed when the ODP being used contains a specified route to be flown, restrictions before turning, and/or altitude restrictions.

Graphic DPs designed by ATC to standardize traffic flows, ensure aircraft separation and enhance capacity are referred to as "Standard Instrument Departures (SIDs)". SIDs also provide obstacle clearance and are published under the appropriate airport section. ATC clearance must be received prior to flying a SID.

CIVIL USERS NOTE: Title 14 Code of Federal Regulations Part 91 prescribes standard take-off rules and establishes take-off minimums for certain operators as follows: (1) Aircraft having two engines or less - one statute mile. (2) Aircraft having more than two engines - one-half statute mile. These standard minima apply in the absence of any different minima listed below.

MILITARY USERS NOTE: Civil (nonstandard) take-off minima are published below. For military take-off minima, refer to appropriate service directives.

NAME TAKE-OFF MINIMUMS

ASHLAND, KY

ASHLAND RGNL (DWU)
AMDT 5 11293 (FAA)

TAKE-OFF MINIMUMS: **Rwy 10**, 600-2¼ or std. with a min. climb of 430' per NM to 1300.

DEPARTURE PROCEDURE: **Rwy 10**, climb heading 103° to 1300 before proceeding on course. **Rwy 28**, climb heading 283° to 1300 before turning right.

NOTE: **Rwy 10**, trees beginning 274' from DER, 381' left of centerline, up to 100' AGL/939' MSL. Trees beginning 292' from DER, 184' right of centerline, up to 100' AGL/625' MSL. Buildings beginning 451' from DER, 508' right of centerline, up to 30' AGL/582' MSL. Poles beginning 642' from DER, 383' right of centerline, up to 40' AGL/586' MSL. Vehicles on roadway 474' from DER, 451' right of centerline, up to 15' AGL/569' MSL. Towers beginning 2.3 NM from DER, 162' right of centerline, up to 440' AGL/1038' MSL. **Rwy 28**, trees beginning 468' from DER, 367' left of centerline, up to 100' AGL/621' MSL. Trees beginning 775' from DER, 37' right of centerline, up to 100' AGL/595' MSL.

NAME TAKE-OFF MINIMUMS

ATHENS, TN

MCMINN COUNTY (MMI)
AMDT 1 10154 (FAA)

TAKE-OFF MINIMUMS: **Rwy 2**, 400-2¼ or std. w/min. climb of 230' per NM to 1800 or 1700 - 3 for climb in visual conditions. **Rwy 20**, std. w/min. climb of 280' per NM to 4900 or 1700-3 for climb in visual conditions.

DEPARTURE PROCEDURE: **Rwy 2**, climb heading 022° to 2200 before turning right or for climb in visual conditions: cross McMinn County airport at or above 2400 before proceeding on course. **Rwy 20**, climb heading 202° to 1900 before turning left or for climb in visual conditions: cross McMinn County airport at or above 2400 before proceeding on course.

NOTE: **Rwy 2**, trees beginning 420' from DER, 444' right of centerline, up to 69' AGL/988' MSL. Trees beginning 742' from DER, 1464' left of centerline, up to 102' AGL/1061' MSL. **Rwy 20**, trees and terrain beginning 43' from DER, 166' right of centerline, up to 49' AGL/868' MSL. Trees beginning 283' from DER, 407' left of centerline, up to 45' AGL/864' MSL.

BARDSTOWN, KY

SAMUELS FIELD

DEPARTURE PROCEDURE: **Rwy 2**, climb runway heading to 1100 before turning east.

31 MAY 2012 to 28 JUN 2012

31 MAY 2012 to 28 JUN 2012

12152

TAKE-OFF MINIMUMS AND (OBSTACLE) DEPARTURE PROCEDURES



TAKE-OFF MINIMUMS AND (OBSTACLE) DEPARTURE PROCEDURES



12152

BOLIVAR, TN

WILLIAM L. WHITEHURST FIELD
TAKE-OFF MINIMUMS: **Rwy 1**, 200-1. **Rwy 19**, 300-1.

BOWLING GREEN, KY

BOWLING GREEN-WARREN COUNTY RGNL (BWG)

AMDT 2 10322 (FAA)

TAKE-OFF MINIMUMS: **Rwy 3**, 300-2 or std. w/ a min. climb of 238' per NM to 900.
NOTE: **Rwy 3**, rising terrain and trees beginning 130' from DER, left and right of centerline, up to 100' AGL/615' MSL. Antenna and pole 1579' from DER, 354' left of centerline, up to 35' AGL/565' MSL. Towers beginning 1.3 NM from DER, 1429' left of centerline, up to 265' AGL/765' MSL. **Rwy 12**, fence beginning 197' from DER, left and right of centerline, up to 8' AGL/541' MSL. Vehicle on road beginning 243' from DER, left and right of centerline, up to 15' AGL/548' MSL. Trees beginning 279' from DER, 132' right of centerline, up to 60' AGL/610' MSL. Tree 857' from DER, 327' left of centerline, 100' AGL/649' MSL. **Rwy 21**, tree 113' from DER, 499' left of centerline, 70' AGL/630' MSL. Tower 1202' from DER, 401' left of centerline, 47' AGL/581' MSL. Tree 2510' from DER, 911' right of centerline, 100' AGL/649' MSL. Obstruction light on tank 4690' from DER, 1637' left of centerline, 150' AGL/691' MSL. **Rwy 30**, vehicle on road beginning 31' from DER, 209' left of centerline, up to 15' AGL/564' MSL. Pole 916' from DER, 407' left of centerline, 40' AGL/584' MSL. Building 1135' from DER, 618' left of centerline, 33' AGL/584' MSL. Tree 1689' from DER, 357' right of centerline, 100' AGL/649' MSL. Tree 1853' from DER, 271' left of centerline, 40' AGL/582' MSL.

BRISTOL-JOHNSON-KINGSPORT, TN

TRI-CITIES RGNL, TN/VA (TRI)
AMDT 7 11013 (FAA)
DEPARTURE PROCEDURE: Use TRICITIES DEPARTURE.

CAMDEN, TN

BENTON COUNTY (0M4)
AMDT 1 09239 (FAA)
DEPARTURE PROCEDURE: **Rwy 4**, climb heading 037° to 900 before turning left.
NOTE: **Rwy 4**, trees beginning 539' from DER, 25' right of centerline, up to 100' AGL/534' MSL. Trees beginning 1067' from DER, 57' left of centerline, up to 100' AGL/549' MSL. Utility poles beginning 951' from DER, 325' left of centerline, 40' AGL/501' MSL. **Rwy 22**, trees beginning 1158' from DER, 597' left of centerline, up to 100' AGL/619' MSL. Trees beginning 1753' from DER, 925' right of centerline, up to 100' AGL/549' MSL.

CAMPBELL AAF (KHOP),

FORT CAMPBELL, KY. 08129

Rwy 5, 18, 23, 36 standard.
TAKE-OFF OBSTACLES: **Rwy 18**, Touchdown reflector 85' from DER, 109' left of centerline, 4' AGL/564' MSL. Touchdown reflector 104' from DER, 109' right of centerline, 4' AGL/563' MSL.
Rwy 23, Tree line 1029' from DER, 541' left of centerline, 60' AGL/590' MSL. **Rwy 36**, Tree line 1199' from DER, 591' left of centerline, 60' AGL/607' MSL.

CAMPBELLSVILLE, KY

TAYLOR COUNTY (AAS)
ORIG 11237 (FAA)
NOTE: **Rwy 5**, trees and terrain beginning 30' from DER, 34' left and right of centerline, up to 100' AGL/1059' MSL. **Rwy 23**, trees and terrain beginning 70' from DER, 174' left and right of centerline, up to 100' AGL/999' MSL.

CENTERVILLE, TN

CENTERVILLE MUNI
TAKE-OFF MINIMUMS: **Rwy 2**, 200-1.

CHATTANOOGA, TN

LOVELL FIELD (CHA)
AMDT 11 10098 (FAA)
TAKE-OFF MINIMUMS: **Rwy 15**, 300-2½ or std. with a min. climb of 360' per NM to 1100. **Rwy 33**, 500-3 or std. with a min. climb of 330' per NM to 1300.
DEPARTURE PROCEDURE: **Rwy 2**, climb via heading 019° to 2400 before turning. **Rwy 15**, climb via heading 147° to 1400 before turning. **Rwy 20**, climb via heading 199° to 2200 before turning. **Rwy 33**, climbing right turn heading 020° to 2900 before proceeding on course.

NOTE: **Rwy 2**, train 868' from DER, 596' right of centerline, 26' AGL/695' MSL. Trees beginning 937' from DER, 284' right of centerline, up to 80' AGL/738' MSL. Trees beginning 1466' from DER, 283' left of centerline, up to 80' AGL/744' MSL. **Rwy 15**, trees beginning 343' from DER, 197' right of centerline, up to 91' AGL/770' MSL. Vehicles on roadway, 489' from DER, on centerline, 17' AGL/687' MSL. Trees beginning 537' from DER, 242' left of centerline, up to 97' AGL/767' MSL. Poles 1011' from DER, 292' right of centerline, up to 130' AGL/809' MSL. Tree 4960' from DER, 1054' left of centerline, up to 103' AGL/917' MSL. Poles beginning 1.01 NM from DER, 1012' left of centerline, up to 86' AGL/946' MSL. Trees beginning 1.18 NM from DER, 351' right of centerline, up to 92' AGL/935' MSL. Trees beginning 1.83 NM from DER, 1883' left of centerline, up to 110' AGL/952' MSL. **Rwy 20**, Tree 641' from DER, 538' left of centerline, 50' AGL/712' MSL. Trees beginning 2924' from DER, 910' right of centerline, up to 100' AGL/782' MSL. **Rwy 33**, trees beginning 236' from DER, 519' right of centerline, 50' AGL/719' MSL. Trees beginning 468' from DER, 264' left of centerline, 50' AGL/669' MSL. Trees beginning 478' from DER, 281' right of centerline, 60' AGL/717' MSL. Trees beginning 2424' from DER, 375' right of centerline, 60' AGL/787' MSL. Tree 4482' from DER, 262' right of centerline, 100' AGL/800' MSL. Tree 1.09 NM from DER, 1371' left of centerline, 100' AGL/845' MSL. Trees beginning 1.19 NM from DER, 3644' right of centerline, 100' AGL/947' MSL. Tree 1.53 NM from DER, 2884' right of centerline, up to 100' AGL/935' MSL. tree 1.75 NM from DER, 2483' left of centerline, up to 100' AGL/972' MSL.

31 MAY 2012 to 28 JUN 2012

31 MAY 2012 to 28 JUN 2012

12152



TAKE-OFF MINIMUMS AND (OBSTACLE) DEPARTURE PROCEDURES



TAKE-OFF MINIMUMS AND (OBSTACLE) DEPARTURE PROCEDURES

12152

CLARKSVILLE, TN

OUTLAW FIELD

TAKE-OFF MINIMUMS: **Rwy 35**, 300-1 or std. w/min. climb of 240' per NM to 800. Alternatively, with standard takeoff minimums and a normal 200'/NM climb gradient, takeoff must occur no later than 1900' prior to departure end of runway.

NOTE: **Rwy 5**, multiple trees beginning 29' from departure end of runway, 135' right of centerline, up to 100' AGL/650' MSL. Multiple trees beginning 787' from departure end of runway, 225' left of centerline, up to 100' AGL/626' MSL. Road 41' from departure end of runway, 122' right of centerline, up to 15' AGL/541' MSL. Terrain 32' from departure end of runway, 414' right of centerline, 0' AGL/535' MSL. **Rwy 17**, multiple trees and poles beginning 14' from departure end of runway, 251' right of centerline, up to 100' AGL/621' MSL. Multiple trees beginning 174' from departure end of runway, 212' left of centerline, up to 59' AGL/608' MSL. **Rwy 23**, multiple trees beginning 184' from departure end of runway, 61' right of centerline, up to 100' AGL/593' MSL. Multiple trees beginning 912' from departure end of runway, 106' left of centerline, up to 100' AGL/590' MSL. Road 162' from departure end of runway, 7' right of centerline, up to 15' AGL/551' MSL. Cross on church 752' from departure end of runway, 237' left of centerline, 52' AGL/587' MSL. **Rwy 35**, multiple trees, poles, and buildings beginning 929' from departure end of runway, 249' left of centerline, up to 75' AGL/645' MSL. Multiple trees, poles and transmission towers beginning 959' from departure end of runway, 147' right of centerline, up to 100' AGL/695' MSL.

CLEVELAND, TN

HARDWICK FIELD

TAKE-OFF MINIMUMS: **Rwy 3**, 300-1 or std. with a min. climb of 380' per NM to 1800. **Rwy 21**, 400-2½ or std. with a min. climb of 230' per NM to 1900.

DEPARTURE PROCEDURE: **Rwy 3**, climb via heading 030° to 1800 before proceeding on course. **Rwy 21**, climbing right turn to 1900 direct GQO VORTAC before proceeding on course.

NOTE: **Rwy 3**, tree 845' from departure end of runway, 211' left of centerline, 89' AGL/963' MSL. Tree 4462' from departure end of runway, 1617' left of centerline, 100' AGL/1119' MSL. **Rwy 21**, tree 479' from departure end of runway, 222' right of centerline, 38' AGL/866' MSL. Tower 2.1 NM from departure end of runway, 1809' left of centerline, 305' AGL/1225' MSL.

COLUMBIA-MT. PLEASANT, TN

MAURY COUNTY (MRC)

AMDT 2 11293 (FAA)

TAKE-OFF MINIMUMS: **Rwys 17, 35**, NA-Environmental. **Rwy 6**, 300 - 1½, or std. w/min. climb of 293' per NM to 1100. **Rwy 24**, 400 - 2½ or std. w/min. climb of 326' per NM to 1300.

DEPARTURE PROCEDURE: **Rwy 24**, climb heading 235° to 1300 before turning left.

NOTE: **Rwy 6**, poles 24' from DER, 356' left of centerline, 38' AGL/691' MSL. Trees beginning 1023' from DER, 450' right of centerline, up to 82' AGL/745' MSL. Trees beginning 1177' from DER, 590' left of centerline, up to 66' AGL/757' MSL. **Rwy 24**, trees beginning 14' from DER, 491' right of centerline, up to 10' AGL/670' MSL. Pole 21' from DER, 487' right of centerline, 10' AGL/677' MSL. Terrain 154' from DER. 26' left of centerline, 669' MSL. Trees beginning 1239' from DER, 700' left of centerline, up to 78' AGL/718' MSL. Trees beginning 1299' from DER, 217' left of centerline, up to 82' AGL/712' MSL. Trees beginning 1388' from DER, 112' right of centerline, up to 86' AGL/739' MSL. Trees beginning 2607' from DER, 324' left of centerline, up to 62' AGL/735' MSL.

COPPERHILL, TN

MARTIN CAMPBELL FIELD (1A3)

ORIG 11237 (FAA)

TAKE-OFF MINIMUMS: **Rwy 2**, std. w/min. climb of 433' per NM to 3000, or 2400-3 for climb in visual conditions. **Rwy 20**, std. w/min. climb of 402' per NM to 3900, or 2400-3 for climb in visual conditions.

DEPARTURE PROCEDURE: **Rwy 2**, climb heading 019° to 4000 before proceeding on course or for climb in visual conditions cross Martin Campbell Field at or above 4000 before proceeding on course. **Rwy 20**, climb heading 199° to 3900 before proceeding on course or for climb in visual conditions cross Martin Campbell Field at or above 4000 before proceeding on course.

NOTE: **Rwy 2**, trees beginning 28' from DER, 133' left of centerline, up to 100' AGL/2186' MSL. Trees beginning 104' from DER, 144' right of centerline, up to 100' AGL/1860' MSL. **Rwy 20**, trees beginning 1' from DER, 163' left of centerline, up to 100' AGL/1827' MSL. Terrain 119' from DER, 2' left of centerline, 1775' MSL. Trees beginning 4' from DER, 156' right of centerline, up to 100' AGL/1827' MSL.

COVINGTON, KY

CINCINNATI/NORTHERN KENTUCKY INTL (CVG)

AMDT 1 10098 (FAA)

NOTE: **Rwy 9**, trees beginning 4562' from DER, 900' left of centerline, up to 94' AGL/1003' MSL. Trees 3385' from DER, 1117' right of centerline, up to 59' AGL/988' MSL. **Rwy 18C**, trees beginning 1882' from DER, 834' left of centerline, up to 75' AGL/974' MSL. Trees 3473' from DER, 904' right of centerline, up to 70' AGL/929' MSL. **Rwy 18R**, trees beginning 3221' from DER, 895' left of centerline, up to 85' AGL/964' MSL. **Rwy 36C**, trees beginning 956' from DER, 613' right of centerline, up to 94' AGL/963' MSL. **Rwy 36R**, light pole 1476' from DER, 813' left of centerline, 47' AGL/926' MSL. Trees 1602' from DER, 754' right of centerline, up to 59' AGL/938' MSL.

31 MAY 2012 to 28 JUN 2012

31 MAY 2012 to 28 JUN 2012

12152

TAKE-OFF MINIMUMS AND (OBSTACLE) DEPARTURE PROCEDURES

TAKE-OFF MINIMUMS AND (OBSTACLE) DEPARTURE PROCEDURES

12152

COVINGTON, TN

COVINGTON MUNI

NOTE: **Rwy 1**, vehicle on road 513' from departure end of runway, 13' right of centerline, up to 15' AGL/294' MSL.

Rwy 19, trees beginning 4626' from departure end of runway, 814' left of centerline, up to 100' AGL/399' MSL.

CROSSVILLE, TN

CROSSVILLE MEMORIAL-WHITSON FIELD

NOTE: **Rwy 8**, trees 31' from departure end of runway, 499' left of centerline, 60' AGL/1905' MSL. Trees 572' from departure end of runway, 499' left of centerline, 75' AGL/1889' MSL. Trees 8' from departure end of runway, 438' right of centerline, 30' AGL/1873' MSL. Bush 76' from departure end of runway, 213' right of centerline, 8' AGL/1872' MSL. **Rwy 26**, tree 43' from departure end of runway, 468' left of centerline, 26' AGL/1910' MSL. Numerous trees 94 to 576' from departure end of runway, 355 to 583' right of centerline, 40 to 70' AGL/1901 to 1927' MSL. Pole 141' from departure end of runway, 474' right of centerline, 50' AGL/1914' MSL. Tree 1083' from departure end of runway, 363' right of centerline, 74' AGL/1922' MSL. Tree 343' from departure end of runway, 538' left of centerline, 68' AGL/1939' MSL.

DANVILLE, KY

STUART POWELL FIELD (DVK)

AMDT 1 11293 (FAA)

TAKE-OFF MINIMUMS: **Rwys 1, 19**, N/A - Obstacles.

Rwy 30, 500-3 or std. w/ min. climb of 290' per NM to 1600.

DEPARTURE PROCEDURE: **Rwy 30**, Climb heading 305° to 1700 before turning left.

NOTE: **Rwy 12**, trees beginning 1938' from DER, 603' left of centerline, up to 100' AGL/1100' MSL. **Rwy 30**, trees and building beginning 8' from DER, 269' left of centerline, up to 100' AGL/1080' MSL. Trees and obstruction light DME, beginning 459' from DER, 114' right of centerline, up to 100' AGL/1105' MSL.

DAYTON, TN

MARK ANTON (2A0)

AMDT 3 11237 (FAA)

TAKE-OFF MINIMUMS: **Rwy 3**, 300-1¼ or std. w/min. climb of 205' per NM to 1000, or alternatively, with std. takeoff minimums and a normal 200' per NM climb gradient, takeoff must occur no later than 1200' prior to DER.

DEPARTURE PROCEDURE: **Rwy 3**, climb heading 033° to 2100 before turning left. **Rwy 21**, climb heading 213° to 1500 before turning right.

NOTE: **Rwy 3**, vehicles on roadway beginning 106' from DER, left and right of centerline, up to 15' AGL/736' MSL. Fence 85' from DER, 498' right of centerline, 15' AGL/726' MSL. Bushes and trees beginning 117' from DER, left and right of centerline, up to 100' AGL/878' MSL. **Rwy 21**, rising terrain and trees beginning 9' from DER, left and right of centerline, up to 100' AGL/821' MSL.

DICKSON, TN

DICKSON MUNI

TAKE-OFF MINIMUMS: **Rwy 17**, 400-2 or std. with a min. climb of 340' per NM to 1400.

DEPARTURE PROCEDURE: **Rwy 17**, climb runway heading to 1400 before turning.

NOTE: **Rwy 17**, tower 9464' from departure end of runway, 2386' right of centerline, 306' AGL/1246' MSL.

Rwy 35, trees 4589' from departure end of runway, 1555' left of centerline, 100' AGL/1039' MSL.

DYERSBURG, TN

DYERSBURG RGNL (DYR)

AMDT 1 11125 (FAA)

TAKE-OFF MINIMUMS: **Rwys 16, 34**, NA - obstacles.

NOTE: **Rwy 4**, trees beginning 183' from DER, 411' left of centerline, up to 101' AGL/400' MSL. **Rwy 22**, trees beginning 1484' from DER, 771' left of centerline, up to 112' AGL/381' MSL. Trees beginning 1396' from DER, 420' right of centerline, up to 128' AGL/387' MSL.

ELIZABETHTON, TN

ELIZABETHTON MUNI

TAKE-OFF MINIMUMS: **Rwy 6**, NA-obstacles. **Rwy 24**, 600-2 w/ min. climb of 380' per NM to 7000 or 3500-3 for climb in visual conditions.

DEPARTURE PROCEDURE: **Rwy 24**, climb heading 244° to 3300 before proceeding on course. For climb in visual conditions cross Elizabethton Muni Airport at or above 4900 before proceeding on course.

NOTE: **Rwy 24**, numerous trees beginning 1655' from departure end of runway, 931' right of centerline, up to 100' AGL/2099' MSL. Numerous trees 1.36 NM from departure end of runway, 2353' left of centerline, up to 100' AGL/2179' MSL. Power line 5898' from departure end of runway, 973' left of centerline, up to 200' AGL/1759' MSL. Power line 1.13 NM from departure end of runway, 584' right of centerline, up to 200' AGL/1849' MSL.

ELIZABETHTOWN, KY

ADDINGTON FIELD

DEPARTURE PROCEDURE: **Rwy 5**, climb via heading 050° to 1800 before proceeding on course.

NOTE: **Rwy 5**, multiple trees beginning 1404' from departure end of runway, 466' left of centerline, up to 96' AGL/835' MSL. **Rwy 23**, multiple trees and powerlines beginning 7' from departure end of runway, 372' left of centerline, up to 100' AGL/899' MSL. Multiple trees and powerlines beginning 2416' from departure end of runway, 25' right of centerline, up to 100' AGL/869' MSL.

FALMOUTH, KY

GENE SNYDER

TAKE-OFF MINIMUMS: **Rwy 3**, 300-1¼ or std. w/ a min. climb of 417' per NM to 1300.

NOTE: **Rwy 3**, tower 5831' from departure end of runway, 340' left of centerline, 106' AGL/1037' MSL. **Rwy 21**, trees beginning 300' from departure end of runway, left and right of centerline, up to 100' AGL/979' MSL.

31 MAY 2012 to 28 JUN 2012

31 MAY 2012 to 28 JUN 2012

12152

TAKE-OFF MINIMUMS AND (OBSTACLE) DEPARTURE PROCEDURES

SE-1



TAKE-OFF MINIMUMS AND (OBSTACLE) DEPARTURE PROCEDURES



12152

FAYETTEVILLE, TN

FAYETTEVILLE MUNI

NOTE: **Rwy 2**, trees 820' from departure end of runway, 520' left of centerline, 70' AGL/1052' MSL. Trees 2430' from departure end of runway, 25' right of centerline, 78' AGL/1050' MSL. **Rwy 20**, trees 875' from departure end of runway, 420' left of centerline, 65' AGL/996' MSL. Trees 1370' from departure end of runway, 60' right of centerline, 65' AGL/1014' MSL. Trees 1720' from departure end of runway, 300' left of centerline, 60' AGL/1008' MSL. Trees 2070' from departure end of runway, 200' left of centerline, 70' AGL/1029' MSL.

FLEMINGSBURG, KY

FLEMING-MASON (FGX)

ORIG 09127 (FAA)

NOTE: **Rwy 7**, tree 53' from DER, 498' right of centerline, 50' AGL/929' MSL. **Rwy 25**, tree 126' from DER, 158' right of centerline, 34' AGL/914' MSL. Tree 525' from DER, 152' right of centerline, 41' AGL/921' MSL. Tree 505' from DER, 127' right of centerline, 38' AGL/918' MSL. Tree 587' from DER, 201' right of centerline, 40' AGL/920' MSL.

FRANKFORT, KY

CAPITAL CITY (FTF)

AMDT 2A 11349 (FAA)

NOTE: **Rwy 6**, tree 1' from DER, 498' right of centerline, 23' AGL/823' MSL. Trees beginning 1115' from DER, 27' right of centerline, up to 68' AGL/876' MSL. Poles 2151' from DER, 348' right of centerline, 35' AGL/856' MSL. Building 2072' from DER, 472' right of centerline, 22' AGL/842' MSL. **Rwy 24**, tree 200' from DER, 551' right of centerline, 52' AGL/843' MSL. Trees beginning 1206' from DER, 195' right of centerline, up to 78' AGL/892' MSL. Antenna 1691' from DER, 254' right of centerline, 12' AGL/824' MSL. Vehicles on road beginning 853' from DER left and right of centerline, 15' AGL/840' MSL. Trees beginning 510' from DER, 141' left of centerline, up to 75' AGL/876' MSL. Poles 198' from DER, 543' left of centerline, 38' AGL/852' MSL. Building 551' from DER, 643' left of centerline, 16' AGL/833' MSL.

GALLATIN, TN

SUMNER COUNTY RGNL (M33)

AMDT 3 11125 (FAA)

TAKE-OFF MINIMUMS: **Rwy 35**, 400-2½ or std. w/ min. climb of 373' per NM to 900.

DEPARTURE PROCEDURE: **Rwy 35**, climb heading 353° to 1700 before turning left.

NOTE: **Rwy 17**, trees beginning 87' from DER, 439' right of centerline, up to 100' AGL/659' MSL. Trees beginning 107' from DER, 446' left of centerline, up to 100' AGL/659' MSL. **Rwy 35**, trees and poles beginning 15' from DER, 69' left of centerline, up to 100' AGL/819' MSL. Trees and poles beginning 279' from DER, 12' right of centerline, up to 100' AGL/939' MSL. Vehicles on road beginning 240' from DER, left and right of centerline, up to 15' AGL/791' MSL. Rising terrain beginning 414' from DER, left and right of centerline, up to 627' MSL.

GEORGETOWN, KY

GEORGETOWN SCOTT COUNTY - MARSHALL FLD (27K)

ORIG 08045 (FAA)

NOTE: **Rwy 3**, Trees 3572' from departure end of runway, 162' left of centerline, 95' AGL/1042' MSL. **Rwy 21**, Vehicle on road 270' from departure end of runway, 51' left of centerline, 15' AGL/944' MSL.

GLASGOW, KY

GLASGOW MUNI (GLW)

ORIG 07354 (FAA)

TAKE-OFF MINIMUMS: **Rwy 8**, 300-1 or std. w/ min. climb of 656' per NM to 1000. **Rwy 26**, 300-1 or std. w/ min. climb of 281' per NM to 1000.

DEPARTURE PROCEDURE: **Rwy 8**, climb heading 073° to 1200 before proceeding southbound.

NOTE: **Rwy 8**, tree 2116' from departure end of runway, 1048' left of centerline, 100' AGL/889' MSL. Tree 2335' from departure end of runway, 910' left of centerline, 100' AGL/869' MSL. Terrain beginning 48' from departure end of runway, 9' left of centerline, up to 0' AGL/785' MSL. Terrain beginning 182' from departure end of runway, 68' right of centerline, up to 0' AGL/729' MSL. Tree 2047' from departure end of runway, 1039' left of centerline, up to 100' AGL/889' MSL. **Rwy 26**, multiple trees beginning 4669' from departure end of runway, 782' left and right of centerline, 100' AGL/869' MSL.

GODMAN AAF (KFTK)

FORT KNOX, KY

..... Rwy 15, 300-1
Rwy 15, 18, 33, 36, climb runway heading to 1200 before turning.

GREENEVILLE, TN

GREENEVILLE-GREENE COUNTY MUNI (GCY)

AMDT 3 10042 (FAA)

TAKE-OFF MINIMUMS: **Rwy 5**, 400-1¼. **Rwy 23**, 300-1¼ or std. w/ min. climb of 337' per NM to 2000.

DEPARTURE PROCEDURE: **Rwys 5**, climb heading 051° to 4100 before turning right. **Rwy 23**, climb heading 231° to 4400 before turning left.

NOTE: **Rwy 5**, trees 694' from DER, 302' left of centerline, 100' AGL/1719' MSL. Trees beginning 1035' from DER, 707' right of centerline, up to 100' AGL/1959' MSL. **Rwy 23**, trees 1347' from DER, 162' left of centerline, 100' AGL/1679' MSL. Trees 2665' from DER, 1193' right of centerline, 100' AGL/1699' MSL. Tower 1 NM from DER, 163' left of centerline, 125' AGL/1770' MSL.

31 MAY 2012 to 28 JUN 2012

31 MAY 2012 to 28 JUN 2012

12152



TAKE-OFF MINIMUMS AND (OBSTACLE) DEPARTURE PROCEDURES



TAKE-OFF MINIMUMS AND (OBSTACLE) DEPARTURE PROCEDURES

12152

GREENVILLE, KY

MUHENBURG COUNTY (M21)

AMDT 2 12152 (FAA)

TAKE-OFF MINIMUMS: **Rwy 6**, 300-1¼. **Rwy 24**, 400-3 or std. w/min. climb of 465' per NM to 1000.

NOTE: **Rwy 6**, terrain and trees beginning 246' from DER, 221' left of centerline, up to 100' AGL/539' MSL. Terrain and trees beginning 1089' from DER, 35' right of centerline, up to 100' AGL/559' MSL. Trees 1415' from DER, 195' right of centerline, up to 100' AGL/609' MSL. Trees 1.1 NM from DER, 2312' left of centerline, up to 100' AGL/689' MSL. Trees 1.4 NM from DER, 2564' left of centerline, up to 100' AGL/669' MSL. **Rwy 24**, trees beginning 518' from DER, 363' left of centerline, up to 100' AGL/519' MSL. Terrain and trees beginning 328' from DER, 502' right of centerline, up to 100' AGL/539' MSL. Trees 2659' from DER, 326' left of centerline, up to 100' AGL/569' MSL. Tower 2.4 NM from DER, 4098' left of centerline, 218' AGL/818' MSL.

HARTFORD, KY

OHIO COUNTY (7K4)

AMDT 1 12152 (FAA)

TAKE-OFF MINIMUMS: **Rwy 3**, 500-3 or std. w/min. climb of 257' per NM to 1200.

NOTE: **Rwy 3**, trees beginning 388' from DER, 508' right of centerline, up to 100' AGL/669' MSL. Trees beginning 1741' from DER, 890' left of centerline, up to 100' AGL/669' MSL. Tower 2.5 NM from DER, 3516' right of centerline, 290' AGL/950' MSL. **Rwy 21**, trees beginning 79' from DER, 294' right of centerline, up to 100' AGL/585' MSL. Trees beginning 95' from DER, 279' left of centerline, up to 100' AGL/568' MSL.

HAZARD, KY

WENDELL H. FORD (K20)

AMDT 3 12096 (FAA)

TAKE-OFF MINIMUMS: **Rwy 6**, 500-2¾. **Rwy 14**, 500-2¼ w/min. climb of 291' per NM to 2300 or 1000-3 for climb in visual conditions. **Rwy 24**, 500-2½. **Rwy 32**, 300-2¼ or std. w/min. climb of 363' per NM to 1700.

DEPARTURE PROCEDURE: **Rwy 6**, climb heading 065° to 1900 before proceeding on course. **Rwy 14**, climb heading 145° to 2000 before proceeding on course, or for climb in visual conditions, cross Wendell H. Ford airport at or above 2100 before proceeding on course. **Rwy 24**, climb heading 245° to 1900 before proceeding on course. **Rwy 32**, climb heading 325° to 1700 before proceeding on course.

NOTE: **Rwy 6**, trees beginning 1457' from DER, left and right of centerline, up to 100' AGL/1699' MSL. **Rwy 14**, rising terrain beginning 117' from DER, 125' right of centerline, up to 1435' MSL. Multiple pole, fence, bushes beginning 131' from DER, 415' right of centerline, up to 80' AGL/1477' MSL. Trees beginning 1284' from DER, left and right of centerline, up to 100' AGL/1659' MSL. **Rwy 24**, trees beginning 13' from DER, left and right of centerline, up to 100' AGL/1739' MSL. **Rwy 32**, multiple poles, buildings and antenna beginning 34' from DER, 471' left of centerline, up to 80' AGL/1279' MSL. Airplane on Rwy 6/24 155' from DER, 427' right of centerline, up to 25' AGL/1264' MSL. Multiple trees beginning 997' from DER, left and right of centerline, up to 100' AGL/1539' MSL.

HENDERSON, KY

HENDERSON CITY-COUNTY (EHR)

AMDT 3 11013 (FAA)

DEPARTURE PROCEDURE: **Rwy 9**, climb heading 089° to 1500 before turning left.

NOTE: **Rwy 9**, vehicle on road 336' from DER, 365' left of centerline, 15' AGL/405' MSL. Poles beginning 422' from DER, 355' left of centerline, up to 36' AGL/421' MSL. Trees beginning 463' from DER, 523' left of centerline up to 88' AGL/473' MSL. Building and equipment on building 3604' from DER, 598' MSL left of centerline, up to 102' AGL/487' MSL. Elevator 3658' from DER, 1007' left of centerline, 137' AGL/527' MSL. **Rwy 27**, vehicle on road 198' from DER, 437' left of centerline, 15' AGL/399' MSL. Pole 1806' from DER, 401' right of centerline, 48' AGL/433' MSL. Trees beginning 2343' from DER, 552' right of centerline, up to 100' AGL/489' MSL. Trees beginning 2563' from DER, 374' left of centerline, up to 109' AGL/489' MSL.

HOHENWALD, TN

JOHN A. BAKER FIELD (0M3)

ORIG 10070 (FAA)

TAKE-OFF MINIMUMS: **Rwy 20**, 300-1¼ or std. w/min. climb of 246' per NM to 1300.

NOTE: **Rwy 2**, vehicle on road, 16' from DER, 121' right of centerline, up to 17' AGL/996' MSL. Vehicles on road 119' from DER, left and right of centerline, up to 17' AGL/996' AGL. Trees beginning 812' from DER, left and right of centerline, up to 100' AGL/1099' MSL.

Rwy 20, trees beginning 655' from DER, 544' right of centerline, up to 100' AGL/1059' MSL. Trees beginning 1682' from DER, 597' left of centerline, up to 100' AGL/1059' MSL. Powerlines, 1.2 NM from DER, left and right of centerline, up to 169' AGL/1149' MSL.

HOPKINSVILLE, KY

HOPKINSVILLE-CHRISTIAN COUNTY (HVC)

AMDT 1 08353 (FAA)

TAKE-OFF MINIMUMS: **Rwy 8**, 300-1 or std. w/min. climb of 275' per NM to 800. **Rwy 26**, 300-1½ or std. w/min. climb of 260' per NM to 1100.

DEPARTURE PROCEDURE: **Rwy 8**, climb heading 080° to 800 before proceeding on course. **Rwy 26**, climb heading 258° to 1100 before turning north.

NOTE: **Rwy 8**, trees beginning 2876' from departure end of runway, 97' right of centerline, up to 100' AGL/669' MSL. Powerlines 3454' from departure end of runway, 852' left of centerline, 79' AGL/658' MSL. Trees beginning 3463' from departure end of runway, 1049' left of centerline, up to 100' AGL/739' MSL. **Rwy 26**, trees beginning 61' from departure end of runway, 2' left of centerline, up to 100' AGL/639' MSL. Trees beginning 758' from departure end of runway, 353' right of centerline, up to 100' AGL/629' MSL. Tower 2260' from departure end of runway, 582' left of centerline, 130' AGL/670' MSL. Elevator, 1.4 miles from departure end of runway, 1278' right of centerline, 201' AGL/780' MSL.

31 MAY 2012 to 28 JUN 2012

31 MAY 2012 to 28 JUN 2012

12152

TAKE-OFF MINIMUMS AND (OBSTACLE) DEPARTURE PROCEDURES



TAKE-OFF MINIMUMS AND (OBSTACLE) DEPARTURE PROCEDURES



12152

HUMBOLDT, TN

HUMBOLDT MUNI

TAKE-OFF MINIMUMS: **Rwy 4**, 300-1. **Rwy 22**, 200-1.**HUNTINGDON, TN**

CARROLL COUNTY (HZD)

AMDT 3 11013 (FAA)

NOTE: **Rwy 1**, trees beginning 33' from DER, 4' right of centerline, up to 102' AGL/612' MSL. Trees beginning 567' from DER, 88' left of centerline, up to 99' AGL/589' MSL. **Rwy 19**, trees beginning 1647' from DER, 561' left of centerline to 215' right of centerline, up to 100' AGL/599' MSL.

JACKSBORO, TN

CAMPBELL COUNTY

TAKE-OFF MINIMUMS: **Rwy 5**, std. w/ min. climb of 477' per NM to 3400, or 200-1 w/ min. climb of 308' per NM to 3400, or 1600-2½ for climb in visual conditions. **Rwy 23**, NA-obstacles.

DEPARTURE PROCEDURE: **Rwy 5**, climb heading 049° to 3400 before proceeding on course or for climb in visual conditions: cross Campbell County Airport at or above 2600 then proceed on VXV R-336 to 3600 before proceeding on course. Do not exceed 210 KIAS until established on VXV R-336 southeast bound.

NOTE: **Rwy 5**, multiple trees beginning 369' from departure end of runway, 579' right of centerline, up to 100' AGL/1279' MSL. Multiple trees beginning 2672' from departure end of runway, 140' left of centerline, up to 100' AGL/1339' MSL.

JACKSON, KY

JULIAN CARROLL

TAKE-OFF MINIMUMS: **Rwy 1**, 400-1 or std. with a min. climb of 250' per NM to 1900.

NOTE: **Rwy 1**, tree 2 miles north of departure end of runway, on centerline, 100' AGL/1700' MSL.

JACKSON, TN

MCKELLAR / SIPES RGNL (MKL)

AMDT 1 09127 (FAA)

DEPARTURE PROCEDURE: **Rwy 2**, climb heading 023° to 1100 before turning right.

NOTE: **Rwy 2**, vehicles on roadway beginning 489' from DER, 594' left of centerline, up to 15' AGL/439' MSL. Trees beginning 782' from DER, 97' left of centerline, up to 100' AGL/491' MSL. Poles and trees beginning 880' from DER, 599' of centerline, up to 100' AGL/456' MSL. Antenna 2043' from DER, 947' left of centerline, 61' AGL/470' MSL. **Rwy 11**, trees beginning 787' from DER, 71' left of centerline, up to 77' AGL/476' MSL. Trees beginning 1080' from DER, 215' right of centerline, up to 100' AGL/509' MSL. **Rwy 20**, vehicles on roadway beginning 41' from DER, 221' right of centerline, up to 15' AGL/444' MSL. Trees beginning 2970' from DER, 877' left of centerline, up to 100' AGL/528' MSL. Trees beginning 2416' from DER, 1040' right of centerline, up to 100' AGL/532' MSL. Powerlines beginning 1893' from DER, 972' right of centerline, 40' AGL/499' MSL. **Rwy 29**, light pole 40' from DER, 402' left of centerline, 70' AGL/449' MSL. Vehicles on roadway beginning 165' from DER, left and right of centerline, up to 17' AGL/434' MSL. Trees beginning 1362' from DER, 360' right of centerline, up to 100' AGL/486' MSL. Trees beginning 1738' from DER, 55' left of centerline, up to 100' AGL/499' MSL.

12152



TAKE-OFF MINIMUMS AND (OBSTACLE) DEPARTURE PROCEDURES

**JAMESTOWN, KY**

RUSSELL COUNTY (K24)

ORIG 08017 (FAA)

NOTE: **Rwy 17**, trees 2071' from departure end of runway, 234' right of centerline, 54' AGL/1012' MSL. **Rwy 35**, trees 2500' from departure end of runway, 99' left of centerline, 65' AGL/1076' MSL.

JAMESTOWN, TN

JAMESTOWN MUNI (2A1)

ORIG 09267 (FAA)

NOTE: **Rwy 18**, trees beginning 1013' from DER, left and right of centerline, up to 100' AGL/1819' MSL. **Rwy 36**, trees beginning 1392' from DER, left and right of centerline, up to 100' AGL/1819' MSL.

JASPER, TN

MARION COUNTY-BROWN FIELD (APT)

AMDT 2 11321 (FAA)

TAKE-OFF MINIMUMS: **Rwy 4**, std. w/ min. climb of 460' per NM to 2600 or 2000-3 for climb in visual conditions.

DEPARTURE PROCEDURE: **Rwy 4**, for climb in visual conditions: cross Marion County-Brown Field at or above 2500 before proceeding on course. **Rwy 22**, climb heading 230° to 2300 before turning on course.

NOTE: **Rwy 4**, trees and bushes beginning 163' from DER, 162' left of centerline, up to 104' AGL/764' MSL. Trees beginning 1199' from DER, 33' right of centerline, up to 108' AGL/718' MSL. Trees beginning 1217' from DER, 20' left of centerline, up to 120' AGL/744' MSL. **Rwy 22**, trees beginning 129' from DER, 3' left of centerline, up to 75' AGL/725' MSL. Trees and bush beginning 150' from DER, 19' right of centerline, up to 42' AGL/694' MSL. Power lines beginning 662' from DER, left and right of centerline, up to 48' AGL/683' MSL. Trees beginning 2010' from DER, 9' right of centerline, up to 123' AGL/755' MSL. Trees beginning 2061' from DER, 22' left of centerline, up to 116' AGL/758' MSL.



TAKE-OFF MINIMUMS AND (OBSTACLE) DEPARTURE PROCEDURES



12152

KNOXVILLE, TN

KNOXVILLE DOWNTOWN ISLAND (DKX)
AMDT 5 10238 (FAA)

TAKE-OFF MINIMUMS: **Rwy 8**, 400-2¼ or std. w/ min. climb of 395' per NM to 1400. **Rwy 26**, 500-2¼ w/ min. climb of 204' per NM to 1400 or 2600-3 for climb in visual conditions.

DEPARTURE PROCEDURE: **Rwy 8**, climb heading 085° to intercept VXV R-053 to 4100 before proceeding on course. **Rwy 26**, climb heading 245° to intercept VXV R-275 to 3100 before proceeding on course or for climb in visual conditions cross Knoxville Downtown Island Airport at or above 3300 before proceeding on course.

NOTE: **Rwy 8**, trees beginning 31' from DER, 142' left of centerline, up to 96' AGL/871' MSL. Trees beginning 2662' from DER, 856' right of centerline, up to 100' AGL/1219' MSL. **Rwy 26**, trees beginning 1792' from DER, 883' right of centerline, up to 57' AGL/1056' MSL. Trees beginning 4606' from DER, 1153' left of centerline, up to 100' AGL/1239' MSL. Trees and buildings 1.65 NM from DER, 1241' left of centerline, up to 100' AGL/1259' MSL. Trees and buildings beginning 1.67 NM from DER, 2666' right of centerline, up to 100' AGL/1328' MSL.

MCGHEE-TYSON

DEPARTURE PROCEDURE: Comply with SID or RADAR vectors, or, climb runway heading to 4000 before turning on course.

LAFAYETTE, TN

LAFAYETTE MUNI (3M7)
ORIG 09099 (FAA)

NOTE: **Rwy 1**, road + vehicle 666' from DER, on centerline, 17' AGL/976' MSL. Tree 1120' from DER, 356' left of centerline, 51' AGL/992' MSL. **Rwy 19**, tree 2490' from DER, 509' right of centerline, 90' AGL/1039' MSL. Tree 2643' from DER, 359' right of centerline, 85' AGL/1060' MSL. Tree 2767' from DER, 406' right of centerline, 91' AGL/1078' MSL. Tree 3387' from DER, 220' right of centerline, 93' AGL/1092' MSL.

LAWRENCEBURG, TN

LAWRENCEBURG-LAWRENCE COUNTY
(2M2)
ORIG 09099 (FAA)

NOTE: **Rwy 17**, trees 10' from DER, 466' right of centerline, 100' AGL/1019' MSL. Vehicle on road 200' from DER, 526' left of centerline, 15' AGL/944' MSL. **Rwy 35**, trees 300' left of centerline, 100' AGL/1029' MSL. Trees, powerlines and vehicle on road 1395' from DER, on centerline, up to 100' AGL/1059' MSL.

LEBANON, TN

LEBANON MUNI (M54)
AMDT 1 10210 (FAA)

TAKE-OFF MINIMUMS: **Rwys 4,22**, NA-Obstacles. **Rwy 19**, std. w/ min. climb of 285' per NM to 1500, or 1100-2½ for climb in visual conditions.

DEPARTURE PROCEDURE: **Rwy 19**, for climb in visual conditions cross Lebanon Muni airport at or above 1500 MSL before proceeding on course.
NOTE: **Rwy 1**, trees beginning 432' from DER, 313' right of centerline, up to 63' AGL/662' MSL. Road 348' from DER, 166' right of centerline, 15' AGL/568' MSL. Power pole 1174' from DER, 445' right of centerline, 38' AGL/597' MSL. Tree 2136' from DER, 8' left of centerline, 63' AGL/612' MSL. **Rwy 19**, trees beginning 1339' from DER, 342' right of centerline, up to 74' AGL/844' MSL. Road 334' from DER, 206' right of centerline, 15' AGL/607' MSL. Trees beginning 2085' from DER, 511' left of centerline, up to 68' AGL/749' MSL.

LEWISBURG, TN

ELLINGTON
TAKE-OFF MINIMUMS: **Rwy 20**, 500-1.

LEWISPORT, KY

HANCOCK CO-RON LEWIS FIELD (KY8)
ORIG 09351 (FAA)

TAKE-OFF MINIMUMS: **Rwy 5**, 300-1¼ or std. w/ min. climb of 394' per NM to 700. **Rwy 23**, 400-1¾ or std. w/ a min. climb of 342' per NM to 900.

DEPARTURE PROCEDURE: Procedure NA at night.
NOTE: **Rwy 5**, trees beginning 206' from DER, 61' right of centerline, up to 100' AGL/599' MSL. **Rwy 23**, trees beginning 2778' from DER, 1230' right of centerline, up to 100' AGL/509' MSL. Tower 1.4 NM from DER, 1460' left of centerline, 300' AGL/770' MSL.

LEXINGTON, KY

BLUE GRASS (LEX)
AMDT 7 10266 (FAA)

NOTE: **Rwy 4**, trees beginning 301' from DER, 502' left of centerline, up to 100' AGL/1039' MSL. Light 710' from DER, 657' right of centerline, 35' AGL/955' MSL. Trees beginning 898' from DER, 501' right of centerline, up to 70' AGL/1041' MSL. Trees beginning 1921' from DER, 520' left of centerline, up to 100' AGL/1042' MSL. **Rwy 9**, antenna on glideslope 685' from DER, 189' right of centerline, 34' AGL/1014' MSL. Trees beginning 1521' from DER, 905' left of centerline, up to 100' AGL/1039' MSL. **Rwy 22**, trees beginning 6' from DER, 494' right of centerline, up to 100' AGL/999' MSL. Trees beginning 374' from DER, 208' left of centerline, up to 100' AGL/1019' MSL. Pole 4382' from DER, 1383' left of centerline, 110' AGL/1080' MSL. **Rwy 27**, trees beginning 15' from DER, 453' left of centerline, up to 100' AGL/1059' MSL. Trees beginning 456' from DER, 438' right of centerline, up to 100' AGL/1049' MSL.

31 MAY 2012 to 28 JUN 2012

31 MAY 2012 to 28 JUN 2012

12152



TAKE-OFF MINIMUMS AND (OBSTACLE) DEPARTURE PROCEDURES





TAKE-OFF MINIMUMS AND (OBSTACLE) DEPARTURE PROCEDURES



12152

LEXINGTON-PARSONS, TN

BEECH RIVER RGNL

NOTE: **Rwy 1**, trees beginning 269' from departure end of runway, 179' right of centerline, up to 100' AGL/619' MSL. Trees beginning 258' from departure end of runway, 224' left of centerline, up to 100' AGL/599' MSL.

Rwy 19, trees beginning 157' from departure end of runway, 259' right of centerline, up to 100' AGL/579' MSL. Trees beginning 227' from departure end of runway, 299' left of centerline, up to 100' AGL/549' MSL.

LIVINGSTON, TN

LIVINGSTON MUNI (8A3)

AMDT 2 09295 (FAA)

DEPARTURE PROCEDURE: **Rwy 21**, climb heading 215° to 1900 before proceeding on course.

NOTE: **Rwy 3**, trees beginning from 173' from DER, 133' left of centerline, up to 100' AGL/1499' MSL. Trees beginning from 282' from DER, 180' right of centerline, up to 100' AGL/1439' MSL. **Rwy 21**, trees beginning from 60' from DER, 186' right of centerline, up to 100' AGL/1459' MSL.

LONDON, KY

LONDON-CORBIN AIRPORT-MAGEE FIELD

TAKE-OFF MINIMUMS: **Rwy 6**, 500-2 or std. with a min. climb of 449' per NM to 1900.

NOTE: **Rwy 6**, tower 1.58 NM from departure end of runway, 1369' left of centerline, 192' AGL/1659' MSL.

Rwy 24, tree 1400' from departure end of runway, 150' left of centerline, 42' AGL/1253' MSL, tree 3387' from departure end of runway, 822' right of centerline, 100' AGL/1349' MSL.

LOUISVILLE, KY

BOWMAN FIELD (LOU)

AMDT 4 10350 (FAA)

DEPARTURE PROCEDURE: **Rwy 33**, 300-1¼ or std. w/ min. climb of 205' per NM to 900, or alternatively, with standard takeoff minimums and a normal 200' per NM climb gradient, takeoff must occur no later than 1300' prior to DER.

NOTE: **Rwy 6**, trees beginning 361' from DER, 143' left of centerline, up to 96' AGL/625' MSL. Trees beginning 372' from DER, 32' right of centerline, up to 90' AGL/619' MSL. **Rwy 15**, trees beginning 880' from DER, 112' left of centerline, up to 69' AGL/588' MSL. Vehicles on road and trees beginning 153' from DER, 107' right of centerline, up to 85' AGL/594' MSL.

Rwy 24, trees beginning 137' from DER, 77' left of centerline, up to 94' AGL/643' MSL. Vehicles on road and trees beginning 189' from DER, 4' right of centerline, up to 84' AGL/643' MSL. Tower 4828' from DER, 1728' right of centerline, 140' AGL/690' MSL.

Rwy 33, trees beginning 198' from DER, 1' left of centerline, up to 53' AGL/602' MSL. Trees beginning 184' from DER, 264' right of centerline, up to 82' AGL/621' MSL. Antenna on stack 1.5 NM from DER, 1421' right of centerline, 221' AGL/770' MSL.

LOUISVILLE, KY (CON'T)

LOUISVILLE INTL-STANDIFORD FIELD

TAKE-OFF MINIMUMS: **Rwy 17L**, std. w/ a min. climb of 234' per NM to 1300. **Rwy 17R**, std. w/ a min. climb of 249' per NM to 1300. **Rwy 35L**, 300-2 or std. w/ a min. climb of 222' per NM to 900, or alternatively, with standard takeoff minimums and a normal 200'/NM climb gradient, takeoff must occur no later than 1900' prior to departure end of runway.

NOTE: **Rwy 11**, tree 1561' from departure end of runway, 855' left of centerline, 76' AGL/556' MSL. Tree 1466' from departure end of runway, 848' right of centerline, 72' AGL/552' MSL. Sign 928' from departure end of runway, 705' left of centerline, 25' AGL/505' MSL. **Rwy 17L**, light tower 622' from departure end of runway, 643' right of centerline, 25' AGL/496' MSL. Obstruction light on DME 498' from departure end of runway, 299' right of centerline, 14' AGL/485' MSL. Multiple trees and lighted towers beginning 328' from departure end of runway, 302' left of centerline, up to 89' AGL/560' MSL. Sign 723' from departure end of runway, 637' left of centerline, 26' AGL/502' MSL. **Rwy 17R**, venton building, 1409' from departure end of runway, 807' left of centerline, 41' AGL/502' MSL. Pole 2241' from departure end of runway, 1013' left of centerline, 64' AGL/525' MSL. Pole 1609' from departure end of runway, 680' left of centerline, 42' AGL/503' MSL. **Rwy 29**, tree 1033' from departure end of runway, 73' right of centerline, 44' AGL/521' MSL. Obstruction light on glideslope 474' from departure end of runway, 399' right of centerline, 49' AGL/526' MSL. Tree 1257' from departure end of runway, 809' left of centerline, 73' AGL/550' MSL. Stack 1213' from departure end of runway, 329' left of centerline, 41' AGL/518' MSL. Multiple lighted towers beginning 873' from departure end of runway, 224' left of centerline, up to 83' AGL/560' MSL. **Rwy 35L**, multiple trees and lighted towers beginning 258' from departure end of runway, 115' left of centerline, up to 267' AGL/757' MSL. Multiple trees and lighted towers beginning 270' from departure end of runway, 231' right of centerline, up to 70' AGL/560' MSL. **Rwy 35R**, multiple trees and lighted towers beginning 542' from departure end of runway, 303' right of centerline, up to 79' AGL/580' MSL.

MADISONVILLE, KY

MADISONVILLE MUNI (210)

ORIG 08045 (FAA)

NOTE: **Rwy 5**, Vehicle on road 163' from departure end of runway, 525' right of centerline, 15' AGL/434' MSL. Vehicle on road 466' from departure end of runway, 597' left of centerline, 15' AGL/454' MSL. **Rwy 23**, Vehicle on road 563' from departure end of runway, 608' right of centerline, 15' AGL/464' MSL. Pole 910' from departure end of runway, 590' left of centerline, 98' AGL/537' MSL.

31 MAY 2012 to 28 JUN 2012

31 MAY 2012 to 28 JUN 2012

12152



TAKE-OFF MINIMUMS AND (OBSTACLE) DEPARTURE PROCEDURES





TAKE-OFF MINIMUMS AND (OBSTACLE) DEPARTURE PROCEDURES



12152

MADISONVILLE, TN

MONROE COUNTY

DEPARTURE PROCEDURE: **Rwy 5**, climb via runway heading and VXV VORTAC R-231 northeastbound to 3100' before turning. **Rwy 23**, climb via runway heading and VXV VORTAC R-231 southwestbound to 2700' before turning.

NOTE: **Rwy 5**, building 2340' from departure end of runway, 263' left of centerline, 88' AGL/1089' MSL. **Rwy 23**, trees 1188' from departure end of runway, 211' left of centerline, 74' AGL/1105' MSL.

MAYFIELD, KY

MAYFIELD GRAVES COUNTY (M25)

AMDT 2 10154 (FAA)

NOTE: **Rwy 18**, tree 58' from DER, 140' right of centerline, 100' AGL/629' MSL. Trees beginning 264' from DER, 8' left of centerline, 100' AGL/629' MSL.

Rwy 36, tree 52' from DER, 144' right of centerline, 100' AGL/619' MSL. Tree 185' from DER, 310' left of centerline, 100' AGL/619' MSL.

MC MINNVILLE, TN

WARREN COUNTY MEMORIAL

TAKE-OFF MINIMUMS: **Rwy 23**, 300-1 or std. with a min. climb of 400' per NM climb to 2200.

MEMPHIS, TN

GENERAL DEWITT SPAIN (M01)

AMDT 4 12068 (FAA)

TAKE-OFF MINIMUMS: **Rwy 17**, std. w/min. climb of 280' per NM to 1000, or 1100-2½ for climb in visual conditions.

DEPARTURE PROCEDURE: **Rwy 17**, climb heading 167° to 1000 before proceeding on course, or for climb in visual conditions, cross General Dewitt Spain Airport at or above 1200 before proceeding on course. **Rwy 35**, climb heading 347° to 1000 before turning right.

NOTE: **Rwy 17**, vehicles on roadway 354' from DER, 51' left and right of centerline, up to 15' AGL/239' MSL. Trees beginning 107' from DER, 491' left of centerline, up to 100' AGL/319' MSL. Tower 2.7 NM from DER, 3133' right of centerline, 465' AGL/735' MSL. **Rwy 35**, trees beginning 15' from DER, 388' right of centerline, up to 100' AGL/324' MSL. Trees beginning 1116' from DER, 17' left of centerline, up to 100' AGL/324' MSL. Rising terrain 2268' from DER, 592' left of centerline, 285' MSL.

MEMPHIS INTL (MEM)

AMDT 3 11293 (FAA)

DEPARTURE PROCEDURE: **Rwy 36L**, climb heading 358° to 700 before turning right. **Rwy 36C**, climb heading 358° to 700 before turning left.

NOTE: **Rwy 9**, numerous trees and light pole beginning 1498' from DER, 800' left of centerline, up to 100' AGL/409' MSL. Numerous trees beginning 2193' from DER, 912' right of centerline, up to 100' AGL/419' MSL. **Rwy 18L**, numerous trees beginning 1218' from DER, 693' left of centerline, up to 100' AGL/459' MSL. **Rwy 18C**, numerous trees beginning 1430' from DER, 831' right of centerline, up to 100' AGL/459' MSL. **Rwy 18R**, pole, VORTAC, and numerous trees beginning 1904' from DER, 986' left of centerline, up to 100' AGL/449' MSL. Numerous trees beginning 1272' from DER, 684' right of centerline, up to 100' AGL/459' MSL. **Rwy 27**, numerous trees beginning 2218' from DER, 875' left of centerline, up to 100' AGL/361' MSL. Numerous trees beginning 785' from DER, 682' right of centerline, up to 100' AGL/349' MSL. **Rwy 36C**, light pole 1949' from DER, 928' right of centerline, 77' AGL/336' MSL.

12152



TAKE-OFF MINIMUMS AND (OBSTACLE) DEPARTURE PROCEDURES



MIDDLESBORO, KY

MIDDLESBORO-BELL COUNTY

TAKE-OFF MINIMUMS: **Rwy 10**, std. w/min. climb of 736' per NM to 3500, or 2500-3 for climb in visual conditions. **Rwy 28**, NA-obstacles.

DEPARTURE PROCEDURE: **Rwy 10**, climb via heading 103° to 3500 before proceeding on course. For climb in visual conditions: cross Middlesboro-Bell County Airport at or above 3500 before proceeding on course.

NOTE: **Rwy 10**, road and vehicle 264' from departure end of runway, on centerline, 17' AGL/1166' MSL. Trees 52' from departure end of runway, 223' right of centerline, 100' AGL/1249' MSL. Trees 617' from departure end of runway, 100' AGL/1249' MSL. Tower 5066' from departure end of runway, 1033' left of centerline, 198' AGL/1335' MSL. Trees 1 NM from departure end of runway, 1354' right of centerline, 100' AGL/1379' MSL. Trees 1.67 NM from departure end of runway, 1900' left of centerline, 100' AGL/1599' MSL. Numerous trees beginning 2 NM from departure end of runway, 3200' left and right of centerline, upsloping on Cumberland Mountain, up to 100' AGL/2499' MSL. 200' AAO 3.15 NM from departure end of runway, 1191' left of centerline, 200' AGL/2899' MSL.

MILLINGTON, TN

CHARLES W. BAKER (2M8)

AMDT 1 11237 (FAA)

DEPARTURE PROCEDURE: **Rwy 18**, climb heading 185° to 1500 before turning left.

NOTE: **Rwy 18**, trees beginning 164' from DER, 423' right of centerline, up to 100' AGL/329' MSL. Trees beginning 1292' from DER, 496' left of centerline, up to 100' AGL/379' MSL. Power line and poles beginning 2114' from DER, left to right of centerline, up to 105' AGL/331' MSL. **Rwy 36**, trees beginning 173' from DER, 500' right of centerline, up to 100' AGL/368' MSL. Trees beginning 2377' from DER, 19' left of centerline, up to 100' AGL/352' MSL.

MONTICELLO, KY

WAYNE COUNTY (EKQ)

AMDT 2 12124 (FAA)

TAKE-OFF MINIMUMS: **Rwy 3**, 300-1½. **Rwy 21**, std. w/min. climb of 275' per NM to 1900 or 1400-3 for climb in visual conditions.

DEPARTURE PROCEDURE: **Rwy 3**, climb heading 039° to 1700 before proceeding on course. **Rwy 21**, climb heading 219° to 2000 before proceeding on course or for climb in visual conditions, cross Wayne County airport at or above 2200 before proceeding on course. When executing VCOA, notify ATC prior to departure.

NOTE: **Rwy 3**, trees beginning 1292' from DER, 533' right of centerline, up to 100' AGL/1139' MSL. Trees beginning 1459' from DER, 16' left of centerline, up to 100' AGL/1179' MSL. Vehicles on roadway beginning 1402' from DER, 329' right of centerline, up to 17' AGL/1096' MSL. **Rwy 21**, vehicles on roadway beginning 570' from DER, 469' left of centerline, up to 17' AGL/996' MSL. Trees beginning 932' from DER, 285' right of centerline, up to 100' AGL/1059' MSL. Trees beginning 1254' from DER, 200' left of centerline, up to 100' AGL/1059' MSL.

TAKE-OFF MINIMUMS AND (OBSTACLE) DEPARTURE PROCEDURES

12152

MOREHEAD, KY

MOREHEAD - ROWAN COUNTY CLYDE A.
THOMAS RGNL (M97)
ORIG 08325 (FAA)

NOTE: **Rwy 2**, trees 777' from departure end of runway, 494' left of centerline up to 77' AGL/1096' MSL. **Rwy 20**, trees 1595' from departure end of runway, 716' left of centerline up to 71' AGL/1090' MSL. Vehicle on road 10' from departure end of runway, 435' left of centerline up to 17' AGL/1029' MSL. Trees 432' from departure end of runway, 534' right of centerline up to 75' AGL/1054' MSL.

MORRISTOWN, TN

MOORE-MURRELL (MOR)
AMDT 6 10210 (FAA)

TAKE-OFF MINIMUMS: **Rwy 5**, std. w/ min. climb of 354' per NM to 2500 or 1000-2½ for climb in visual conditions.
DEPARTURE PROCEDURE: **Rwy 5**, for climb in visual conditions cross Moore-Murrell airport at or above 2200 then via VXV VORTAC R-060 inbound to 4000 before proceeding on course. **Rwy 23**, climb heading 233° and VXV VORTAC R-060 inbound to 4000 before proceeding on course.

NOTE: **Rwy 5**, pole 2187' from DER, 517' right of centerline, up to 16' AGL/1356' MSL. Vehicle on road 2019' from DER, 1018' left of centerline, up to 17' AGL/1337' MSL. Windssock 66' from DER, 189' left of centerline, up to 8' AGL/1282' MSL. Railroad at DER, 295' right of centerline, up to 15' AGL/1288' MSL. Trees beginning 1065' from DER, 464' left of centerline, up to 54' AGL/1414' MSL. Trees beginning 191' from DER, 274' right of centerline, up to 51' AGL/1311' MSL.

Rwy 23, pole 1442' from DER, 451' right of centerline, up to 54' AGL/1367' MSL. Vehicle on road 23' from DER, 337' left of centerline, up to 17' AGL/1367' MSL. Vehicle on road 1246' from DER, 113' right of centerline, up to 17' AGL/1369' MSL. Trees beginning 1774' from DER, 753' right of centerline, up to 100' AGL/1460' MSL. Buildings 1583' from DER, 690' right of centerline, up to 30' AGL/1370' MSL.

MOUNT STERLING, KY

MOUNT STERLING-MONTGOMERY COUNTY
(IOB)
AMDT 1 10098 (FAA)

TAKE-OFF MINIMUMS: **Rwy 3**, 500-3 or std. with a min. climb of 225' per NM to 1600.

NOTE: **Rwy 3**, tower 2.6 NM from DER, 1674' right of centerline, 415' AGL/1425' MSL. Trees beginning 33' from DER, 494' left of centerline, up to 100' AGL/1029' MSL. Trees beginning 271' from DER, 568' right of centerline, up to 100' AGL/1019' MSL. **Rwy 21**, trees beginning at DER, 289' left of centerline, up to 100' AGL/1149' MSL. Trees beginning 301' from DER, 380' right of centerline, up to 100' AGL/1109' MSL.

MOUNTAIN CITY, TN

JOHNSON COUNTY (6A4)
ORIG 09211 (FAA)

TAKE-OFF MINIMUMS: **Rwy 6**, 3400-3 for climb in visual conditions. **Rwy 24**, 1100-3 with min. climb of 510' per NM to 5700, or 3400-3 for climb in visual conditions.

DEPARTURE PROCEDURE: **Rwy 6**, for climb in visual conditions (NA at night): cross Johnson County Airport at or above 5500 MSL before proceeding on course.

Rwy 24, for climb in visual conditions (NA at night): cross Johnson County airport at or above 5500 MSL before proceeding on course.

12152

TAKE-OFF MINIMUMS AND (OBSTACLE) DEPARTURE PROCEDURES

MURFREESBORO, TN

MURFREESBORO MUNI (MBT)
AMDT 4 10266 (FAA)

DEPARTURE PROCEDURE: **Rwy 18**, climb heading 184° to 1400 before turning right.

NOTE: **Rwy 18**, trees beginning 194' from DER, 110' left of centerline to 133' right of centerline, up to 87' AGL/706' MSL. Building 655' from DER, 305' left of centerline, up to 18' AGL/637' MSL. **Rwy 36**, trees beginning 31' from DER, 97' left of centerline to 105' right of centerline, up to 100' AGL/709' MSL.

MURRAY, KY

KYLE-OAKLEY FIELD (CEY)
AMDT 4 11349 (FAA)

NOTE: **Rwy 5**, trees and pole beginning 665' from DER, 473' right of centerline, up to 100' AGL/679' MSL. Trees beginning 951' from DER, 346' left of centerline, up to 110' AGL/679' MSL. **Rwy 23**, tree 16' from DER, 407' right of centerline, 69' AGL/660' MSL. Trees beginning 144' from DER, 417' left of centerline, up to 85' AGL/689' MSL.

NASHVILLE, TN

JOHN C. TUNE

DEPARTURE PROCEDURE: **Rwy 23**, climb runway heading to 3000 before turning right. **Rwy 20**, climb runway heading to 3000 before turning.

NASHVILLE INTL (BNA)

AMDT 7 08269 (FAA)

TAKE-OFF MINIMUMS: **Rwy 31**, std. w/ min. climb of 240' per NM to 2600.

DEPARTURE PROCEDURE: **Rwy 20L**, climb heading 200° to 1400 before turning right. **Rwys 20C, 20R** climb heading 200° to 1800 before turning right. **Rwy 31**, climb heading 315° to 2600 before proceeding on course.

NOTE: **Rwy 2L**, trees beginning 203' from departure end of runway, 489' right of centerline, up to 60' AGL/576' MSL. **Rwy 2R**, trees beginning 237' from departure end of runway, 534' right of centerline, up to 60' AGL/569' MSL. **Rwy 13**, blast fence obstruction light 335' from departure end of runway, 64' left of centerline, 6' AGL/595' MSL. Trees beginning 2852' from departure end of runway, 28' right of centerline, up to 60' AGL/685' MSL. Pole 3761' from departure end of runway, 726' right of centerline, 60' AGL/689' MSL. **Rwy 20L**, trees beginning 211' from departure end of runway, 520' right of centerline, up to 60' AGL/669' MSL. Trees beginning 223' from departure end of runway, 515' left of centerline, up to 100' AGL/669' MSL. **Rwy 20C**, trees beginning 1480' from departure end of runway, 744' right of centerline, up to 60' AGL/649' MSL. Trees beginning 1549' from departure end of runway, 882' left of centerline, up to 60' AGL/609' MSL. **Rwy 20R**, flagpole 1298' from departure end of runway, 777' right of centerline, 37' AGL/636' MSL. Building 2183' from departure end of runway, 1083' right of centerline, 91' AGL/680' MSL. **Rwy 31**, ground 2' from departure end of runway, 498' left of centerline, 0' AGL/541' MSL. LOC obstruction light 303' from departure end of runway, on centerline, 48' AGL/547' MSL. Blast fence obstruction light 382' from departure end of runway, 50' left of centerline, 30' AGL/569' MSL. Trees beginning 789' from departure end of runway, 331' right of centerline, up to 60' AGL/602' MSL. Pole 1012' from departure end of runway, 429' left of centerline, 29' AGL/578' MSL. Transmission tower 1882' from departure end of runway, 219' right of centerline, 61' AGL/610' MSL. Pole 2037' from departure end of runway, 422' right of centerline, 47' AGL/596' MSL. Transmission tower 2778' from departure end of runway, 83' left of centerline, 91' AGL/630' MSL.

31 MAY 2012 to 28 JUN 2012

31 MAY 2012 to 28 JUN 2012

TAKE-OFF MINIMUMS AND (OBSTACLE) DEPARTURE PROCEDURES

12152

ONEIDA, TN

SCOTT MUNI

NOTE: **Rwy 5**, tree 2800' from departure end of runway, 600' right of centerline, 69' AGL/1605' MSL. **Rwy 23**, pole 950' from departure end of runway, on centerline, 42' AGL/1575' MSL. Power line 2938' from departure end of runway, 450' right of centerline, 142' AGL/1660' MSL.

OWENSBORO, KY

OWENSBORO-DAVISS COUNTY (OWB)

AMDT 4 08297 (FAA)

TAKE-OFF MINIMUMS: **Rwy 36**, 400-2 or std. w/ min. climb of 340' per NM to 1000.

DEPARTURE PROCEDURE: **Rwy 36**, climb heading 359° to 1000 before turning west.

NOTE: **Rwy 5**, numerous buildings beginning 340' from departure end of runway, 454' left of centerline, up to 31' AGL/436' MSL. Multiple trees beginning 1898' from departure end of runway, 350' left of centerline, up to 69' AGL/474' MSL. Pole 1853' from departure end of runway, 206' left of centerline, 47' AGL/452' MSL. Pole 1863' from departure end of runway, 413' left of centerline, 49' AGL/454' MSL. Windscock 393' from departure end of runway, 163' left of centerline, 10' AGL/418' MSL. Trees beginning 1489' from departure end of runway, 429' right of centerline, up to 49' AGL/454' MSL. **Rwy 18**, pole 942' from departure end of runway 133' left of centerline, 38' AGL/438' MSL. Pole 1134' from departure end of runway, 675' left of centerline, 45' AGL/445' MSL. **Rwy 23**, tree 1521' from departure end of runway, 650' right of centerline, 100' AGL/509' MSL. Tree 2223' from departure end of runway, 81' right of centerline, 82' AGL/482' MSL. **Rwy 36**, multiple trees beginning 478' from departure end of runway, 500' right of centerline, up to 36' AGL/439' MSL. Tower 1.54 NM from departure end of runway, 2941' right of centerline, 403' AGL/803' MSL. Obstacle light on tower 1.55 NM from departure end of runway, 2940' right of centerline, 403' AGL/803' MSL. Tree 939' from departure end of runway, 496' left of centerline, 40' AGL/443' MSL. Building 508' from departure end of runway, 578' left of centerline, 22' AGL/426' MSL.

PADUCAH, KY

BARKLEY RGNL

NOTE: **Rwy 4**, multiple trees and bushes beginning 131' from departure end of runway, 13' left of centerline, up to 100' AGL/452' MSL. Multiple trees beginning 697' from departure end of runway, 19' right of centerline, up to 100' AGL/464' MSL. Pole 1301' from departure end of runway, 316' right of centerline, up to 17' AGL/415' MSL. **Rwy 14**, multiple trees beginning 858' from departure end of runway, 77' left of centerline, up to 100' AGL/487' MSL. Road 551' from departure end of runway, 144' left of centerline, 17' AGL/422' MSL. Tree 788' from departure end of runway, 13' right of centerline, up to 100' AGL/439' MSL. Terrain 13' from departure end of runway, 320' right of centerline, 0' AGL/404' MSL. **Rwy 22**, multiple terrain and trees beginning 128' from departure end of runway, 30' left of centerline, up to 100' AGL/507' MSL. Road 981' from departure end of runway, 692' right of centerline, 17' AGL/444' MSL. Terrain 76' from departure end of runway, 3' right of centerline, 0' AGL/420' MSL. Terrain 25' from departure end of runway, 388' right of centerline, 0' AGL/411' MSL. **Rwy 32**, multiple trees beginning 376' from departure end of runway, 173' right of centerline, up to 100' AGL/458' MSL. Multiple trees and terrain beginning 31' from departure end of runway, 42' left of centerline, up to 100' AGL/462' MSL.

PARIS, TN

HENRY COUNTY (PHT)

ORIG 10070 (FAA)

NOTE: **Rwy 2**, vehicle on road 772' from DER, 93' right of centerline, up to 15' AGL/589' MSL. Trees beginning 1232' from DER, 258' left of centerline, up to 100' AGL/669' MSL. **Rwy 20**, tree 2808' from DER, 630' right of centerline, 80' AGL/651' MSL. Rising terrain beginning 274' from DER, 388' left of centerline, 604' MSL.

PIKEVILLE, KY

PIKE COUNTY-HATCHER FIELD (PBX)

ORIG 09127 (FAA)

TAKE-OFF MINIMUMS: **Rwy 9**, 300-1 or std. w/ min. climb of 453' per NM to 2300 or 1000-3 for climb in visual conditions.

DEPARTURE PROCEDURE: **Rwy 9**, for climb in visual conditions: cross Pike County-Hatcher Field airport at or above 2300 before proceeding on course.

NOTE: **Rwy 9**, tree 4788' from DER, 1173' right of centerline, 20' AGL/1739' MSL. Multiple trees beginning 2702' from DER, 654' left of centerline and 965' right of centerline, up to 20' AGL/1770' MSL.

PORTLAND, TN

PORTLAND MUNI

NOTE: **Rwy 1**, tree 501' from departure end of runway, 180' right of centerline, 100' AGL/839' MSL. Tree 1564' from departure end of runway, 507' left of centerline, 100' AGL/839' MSL. **Rwy 19**, multiple trees 673' from departure end of runway, 83' right of centerline, up to 100' AGL/919' MSL.

PRESTONSBURG, KY

BIG SANDY RGNL

NOTE: **Rwy 21**, multiple trees and poles beginning 250' from departure end of runway, 11' right of centerline, up to 72' AGL/1272' MSL. Multiple trees and poles beginning 294' from departure end of runway, 35' left of centerline, up to 83' AGL/1283' MSL.

PULASKI, TN

ABERNATHY FIELD (GZS)

AMDT 4 11321 (FAA)

TAKE-OFF MINIMUMS: **Rwy 16**, 300-2¼ or std. w/ min. climb of 288' per NM to 1100. **Rwy 34**, 500-3 or std. w/ min. climb of 461' per NM to 1300.

DEPARTURE PROCEDURE: **Rwy 16**, climb heading 156° to 1100 before proceeding on course.

NOTE: **Rwy 16**, ground and trees beginning 60' from DER, 159' right of centerline, up to 80' AGL/708' MSL. Trees beginning 374' from DER, 173' left of centerline, up to 80' AGL/681' MSL. Poles and conveyor beginning 937' from DER, 141' right of centerline, up to 75' AGL/705' MSL. Trees beginning 1170' from DER, 587' left of centerline, up to 80' AGL/694' MSL. Trees beginning 5236' from DER, 308' right of centerline, up to 80' AGL/778' MSL. **Rwy 34**, terrain and trees beginning 1' from DER, 189' left of centerline, up to 80' AGL/756' MSL. Trees beginning 1031' from DER, right and left of centerline, up to 80' AGL/1029' MSL.

31 MAY 2012 to 28 JUN 2012

31 MAY 2012 to 28 JUN 2012

12152

TAKE-OFF MINIMUMS AND (OBSTACLE) DEPARTURE PROCEDURES



RICHMOND, KY

MADISON (I39)
ORIG 10210 (FAA)

TAKE-OFF MINIMUMS: **Rwy 18**, 300-1¼ or std. w/min. climb of 229' per NM to 1300, or alternatively, with standard take-off minimums and a normal 200' per NM climb gradient, take-off must occur no later than 1700' prior to DER.

DEPARTURE PROCEDURE: **Rwy 18**, climb heading 180° to 1900 before turning left.

NOTE: **Rwy 18**, trees beginning 272' from DER, 230' right of centerline, up to 100' AGL/1099' MSL. Trees beginning 579' from DER, 105' left of centerline up to 100' AGL/1119' MSL. **Rwy 36**, trees beginning 6' from DER, 276' left of centerline, up to 100' AGL/1059' MSL. Trees beginning 105' from DER, 463' right of centerline up to 49' AGL/1009' MSL. Vehicle on road beginning 156' from DER left and right of centerline up to 15' AGL/984' MSL.

ROCKWOOD, TN

ROCKWOOD MUNI (RKW)
AMDT 2 11349 (FAA)

DEPARTURE PROCEDURE: **Rwy 4**, climb heading 044° to 2500 before turning left. **Rwy 22**, climb heading 224° to 2600 before proceeding on course.

NOTE: **Rwy 4**, trees beginning 100' from DER, 234' right of centerline, up to 81' AGL/1646' MSL. Trees beginning 593' from DER, 557' left of centerline, up to 88' AGL/1649' MSL. **Rwy 22**, trees beginning 54' from DER, 101' left of centerline, up to 71' AGL/1676' MSL. Trees beginning 630' from DER, 136' right of centerline, up to 70' AGL/1691' MSL.

ROGERSVILLE, TN

HAWKINS COUNTY (RVN)
AMDT 2 11321 (FAA)

TAKE-OFF MINIMUMS: **Rwy 7**, 400-2¾ or std. w/min. climb of 372' per NM to 1800. **Rwy 25**, 500-3 w/min. climb of 245' per NM to 2000 or 1700-3 for climb in visual conditions.

DEPARTURE PROCEDURE: **Rwy 7**, climb heading 068° to 3100 before proceeding on course. **Rwy 25**, climb heading 233° to 2800 before proceeding on course. For climb in visual conditions: cross Hawkins County Airport at or above 2800' MSL before proceeding on course.

NOTE: **Rwy 7**, terrain, house, driveways, and trees beginning 101' from DER, 26' left of centerline, up to 35' AGL/1354' MSL. Trees beginning 245' from DER, 194' right of centerline, up to 101' AGL/1340' MSL. Trees 1.1 NM from DER, 2338' left of centerline, up to 67' AGL/1566' MSL. Tower 2.2 NM from DER, 3130' left of centerline, 223' AGL/1589' MSL. **Rwy 25**, power line pole and trees beginning 76' from DER, 3' left of centerline, up to 87' AGL/1406' MSL. Terrain, fences, buildings, power lines, power line poles, and trees beginning 2' from DER, 133' right of centerline, up to 87' AGL/1406' MSL. Trees 2440' from DER, 1102' right of centerline, up to 99' AGL/1478' MSL. Trees 5831' from DER, 1642' right of centerline, up to 81' AGL/1600' MSL. Trees 2.5 NM from DER, 3446' right of centerline, up to 64' AGL/1713' MSL.

RUSSELLVILLE, KY

RUSSELLVILLE-LOGAN COUNTY
DEPARTURE PROCEDURE: **Rwy 6**, climb to 1700 before turning left. **Rwy 24**, climb to 1700 before turning right.

SABRE AHP (FORT CAMPBELL) (EOD),

CLARKSVILLE, TN AMDT 1A,
10126

Rwy 23, Vehicle on road 134' from DER, 259' right of centerline, up to 15' AGL/604' MSL.

SAVANNAH, TN

SAVANNAH-HARDIN COUNTY (SNH)
AMDT 3 09211 (FAA)

TAKE-OFF MINIMUMS: **Rwy 19**, 400-2¼ or std. with min. climb of 260' per NM to 1000.

NOTE: **Rwy 1**, trees beginning 1243' from DER, 101' right of centerline, up to 70' AGL/589' MSL. **Rwy 19**, trees beginning 973' from DER, left and right of centerline, up to 70' AGL/789' MSL.

SELMER, TN

ROBERT SIBLEY (SZY)
ORIG 08269 (FAA)

NOTE: **Rwy 17**, terrain beginning 71' from departure end of runway, 154' right of centerline, up to 644' MSL. Trees beginning 104' from departure end of runway, 405' right of centerline, up to 76' AGL/695' MSL. Pole 1208' from departure end of runway, 810' right of centerline, 28' AGL/687' MSL. Pole 1857' from departure end of runway, 380' right of centerline, 45' AGL/664' MSL. **Rwy 35**, vehicles on roadway 107' from departure end of runway, on centerline, up to 15' AGL/622' MSL. Trees beginning 95' from departure end of runway, 206' right of centerline, up to 51' AGL/645' MSL.

SEVIERVILLE, TN

GATLINBURG-PIGEON FORGE

DEPARTURE PROCEDURE: **Rwy 10**, climbing left turn via VXV VORTACR-090 westbound to 5000 before turning on course. **Rwy 28**, climb direct VXV VORTAC to 5000 before turning on course.

NOTE: **Rwy 10**, trees 300' from departure end of runway, 350' left of centerline, 80' AGL/1123' MSL. Trees 610' from departure end of runway, 390' left of centerline, 85' AGL/1137' MSL. Power line 1504' from departure end of runway, 380' left of centerline, 55' AGL/1091' MSL. **Rwy 28**, trees 120' left of departure end of runway, 45' AGL/1062' MSL. Tower 13,580' from departure end of runway, 2626' right of centerline, 175' AGL/1359' MSL.

31 MAY 2012 to 28 JUN 2012

31 MAY 2012 to 28 JUN 2012





TAKE-OFF MINIMUMS AND (OBSTACLE) DEPARTURE PROCEDURES



12152

SHELBYVILLE, TN

BOMBER FIELD-SHELBYVILLE MUNI (SYI)
AMDT 1 08213 (FAA)

DEPARTURE PROCEDURE: **Rwy 18**, climb heading 180° to 1600 before turning left. **Rwy 36**, climb heading 345° to 1700 before turning right.

NOTE: **Rwy 18**, tree 81' from departure end of runway, 176' right of centerline, up to 100' AGL/890' MSL. Tree 86' from departure end of runway, 199' left of centerline, up to 100' AGL/880' MSL. **Rwy 36**, trees and terrain 505' from departure end of runway, 36' left of centerline, up to 7' AGL/806' MSL.

SMITHVILLE, TN

SMITHVILLE MUNI (0A3)
ORIG 08157 (FAA)

NOTE: **Rwy 6**, trees and terrain beginning 76' from departure end of runway, 256' right of centerline, up to 100' AGL/1199' MSL. Trees beginning 733' from departure end of runway, 11' left of centerline up to 100' AGL/1119' MSL. **Rwy 24**, trees and terrain beginning 76' from departure end of runway, 8' left of centerline, up to 100' AGL/1119' MSL. Trees and terrain beginning 83' from departure end of runway, 162' right of centerline, up to 100' AGL/1179' MSL.

SMYRNA, TN

SMYRNA (MQY)
AMDT 6 11293 (FAA)

TAKE-OFF MINIMUMS: **Rwy 19**, 300-2 or std. w/min. climb of 205' per NM to 900, or alternatively, with standard takeoff minimums and a normal 200' per NM climb gradient. Takeoff must occur no later than 1300' prior to DER.

DEPARTURE PROCEDURE: **Rwy 1**, climb heading 006° to 1200 before turning northeast.

NOTE: **Rwy 1**, trees beginning 762' from DER, 79' right of centerline, up to 100' AGL/592' MSL. Trees beginning 1192' from DER, 194' left of centerline, up to 100' AGL/617' MSL. Vehicles on roadway 3918' from DER, 697' across centerline, up to 17' AGL/627' MSL. **Rwy 14**, trees beginning 1318' from DER, 808' left of centerline, up to 100' AGL/572' MSL. **Rwy 19**, vehicles on roadway 1493' from DER, crosses centerline, up to 17' AGL/566' MSL. Trees beginning 1547' from DER, 75' right of centerline, up to 100' AGL/608' MSL. Trees beginning 1647' from DER, 165' left of centerline, up to 100' AGL/659' MSL. Tower 1.7 NM from DER, 2316' right of centerline, 143' AGL/788' MSL. **Rwy 32**, trees beginning 69' from DER, 461' left of centerline, up to 100' AGL/635' MSL. Trees beginning 404' from DER, 64' right of centerline, up to 100' AGL/695' MSL.

SOMERSET, KY

LAKE CUMBERLAND RGNL (SME)
AMDT 4 12096 (FAA)

TAKE-OFF MINIMUMS: **Rwy 5**, 500-2 or std. w/min. climb of 435' per NM to 1600. **Rwy 23**, 300-1½ or std. w/min. climb of 375' per NM to 1300.

DEPARTURE PROCEDURE: **Rwy 5**, climb heading 048° to 2000 before proceeding on course. **Rwy 23**, climb heading 228° to 2000 before turning southbound. NOTE: **Rwy 5**, power lines beginning 2350' from DER, on centerline, up to 100' AGL/1009' MSL. Trees beginning 5685' from DER, left and right of centerline, up to 100' AGL/1369' MSL. Tower 1.7 NM from DER, 500' right of centerline, 100' AGL/1300' MSL. **Rwy 23**, poles beginning 178' from DER, on centerline, up to 102' AGL/1111' MSL. Trees beginning 281' from DER, left and right of centerline, up to 81' AGL/1190' MSL. Buildings beginning 412' from DER, 336' right of centerline, up to 10' AGL/1089' MSL. Hills beginning 982' from DER, 102' left of centerline, up to 927' MSL. Signs beginning 1214' from DER, 45' right of centerline, 45' AGL/959' MSL. Antenna 2939' from DER, 54' left of centerline, 56' AGL/1005' MSL.

SOMERVILLE, TN

FAYETTE COUNTY

NOTE: **Rwy 1**, multiple trees beginning 527' from departure end of runway, 343' right of centerline, up to 100' AGL/529' MSL. Multiple trees beginning 427' from departure end of runway, 8' left of centerline, up to 100' AGL/529' MSL. **Rwy 19**, multiple trees beginning 87' from departure end of runway, 306' right of centerline, up to 100' AGL/539' MSL. Multiple trees beginning 709' from departure end of runway, 455' left of centerline, up to 100' AGL/549' MSL.

SPARTA, TN

UPPER CUMBERLAND RGNL (SRB)
ORIG 09015 (FAA)

DEPARTURE PROCEDURE: **Rwy 4**, climb via heading 037° to 3400 before proceeding on course. NOTE: **Rwy 4**, tree 56' from departure end of runway, 448' right of centerline, 100' AGL/1049' MSL. Tree 484' from departure end of runway, 574' right of centerline, 100' AGL/1056' MSL. **Rwy 22**, tree 1646' from departure end of runway, 775' left of centerline, 100' AGL/1069' MSL.

SPRINGFIELD, KY

LEBANON-SPRINGFIELD

TAKE-OFF MINIMUMS: **Rwy 11**, 300-1.

SPRINGFIELD, TN

SPRINGFIELD ROBERTSON COUNTY (M91)
AMDT1 12040 (FAA)

NOTE: **Rwy 4**, ground 129' from DER, 495' right of centerline, 715' MSL. Trees beginning 495' from DER, 209' right of centerline, up to 100' AGL/800' MSL. Trees beginning 863' from DER, 442' left of centerline, up to 100' AGL/784' MSL. Transmission poles beginning 1410' from DER, 229' left of centerline, up to 38' AGL/748' MSL.

Rwy 22, power lines beginning 530' from DER, 625' left of centerline, up to 100' AGL/819' MSL. Trees beginning 630' from DER, 520' left of centerline, up to 100' AGL/819' MSL.

31 MAY 2012 to 28 JUN 2012

31 MAY 2012 to 28 JUN 2012

12152



TAKE-OFF MINIMUMS AND (OBSTACLE) DEPARTURE PROCEDURES





TAKE-OFF MINIMUMS AND (OBSTACLE) DEPARTURE PROCEDURES

12152

STURGIS, KY

STURGIS MUNI (TWT)

AMDT 3 10154 (FAA)

TAKE-OFF MINIMUMS: **Rwy 36**, 400-2¼ or std. w/ min. climb of 280' per NM to 800.

NOTE: **Rwy 18**, trees beginning 1248' from DER, 19' left of centerline, up to 94' AGL/454' MSL. Trees beginning 2144' from DER, 226' right of centerline, up to 100' AGL/469' MSL. **Rwy 36**, trees beginning 1.5 NM from DER, 1240' left of centerline, up to 100' AGL/ 689' MSL.

TOMPKINSVILLE, KY

TOMPKINSVILLE-MONROE COUNTY (TZV)

ORIG 09351 (FAA)

DEPARTURE PROCEDURE: **Rwy 22**, climb heading 218° to 2000 before proceeding on course.

NOTE: **Rwy 4**, trees beginning at DER, left and right of centerline, up to 100' AGL/1100' MSL. **Rwy 22**, pole 10' from DER, 114' right of centerline, 2' AGL/1016' MSL. Trees beginning at DER, left and right of centerline, up to 100' AGL/1132' MSL.

TRENTON, TN

GIBSON COUNTY

TAKE-OFF MINIMUMS: **Rwy 1**, 400-1.

DEPARTURE PROCEDURE: **Rwys 1, 19**, climb runway heading to 1500 before turning east.

TULLAHOMA, TN

TULLAHOMA RGNL/WM NORTHERN FIELD (THA)

AMDT 1 11237 (FAA)

TAKE-OFF MINIMUMS: **Rwys 9, 27, NA** - Environmental.

NOTE: **Rwy 6**, buildings beginning 36' from DER, 439' right of centerline, up to 28' AGL/1098' MSL. Rising terrain, beginning 41' from DER, 5' right of centerline, up to 1090' MSL. Fence 83' from DER, 393' right of centerline, up to 12' AGL/1082' MSL. Trees beginning 130' from DER, left and right of centerline, up to 100' AGL/1199' MSL. Light poles beginning 674' from DER, 311' left of centerline, up to 36' AGL/1096' MSL. **Rwy 18**, trees beginning 146' from DER, left and right of centerline, up to 100' AGL/ 1199' MSL. Buildings beginning 299' from DER, 217' right of centerline, up to 32' AGL/1102' MSL. **Rwy 24**, trees beginning 454' from DER, left and right of centerline, up to 100' AGL/1219' MSL. **Rwy 36**, trees beginning 24' from DER, left and right of centerline, up to 100' AGL/1229' MSL. Light pole 260' from DER, 498' left of centerline, 18' AGL/1088' MSL.

UNION CITY, TN

EVERETT-STEWART RGNL (UCY)

AMDT1 11237 (FAA)

NOTE: **Rwy 1**, obstruction light 9' from DER, 124' right of centerline, 2' AGL/310' MSL. Trees 1200' from DER, 734' left of centerline, up to 69' AGL/379' MSL. Tractor 112' from DER, 405' left of centerline, 12' AGL/321' MSL. **Rwy 19**, trees 1050' from DER, 61' left of centerline, up to 100' AGL/449' MSL. Trees 1452' from DER, 865' right of centerline, up to 100' AGL/459' MSL. Tractor 32' from DER, 81' left of centerline, 12' AGL/351' MSL.

WAVERLY, TN

HUMPHREYS COUNTY

TAKE-OFF MINIMUMS: **Rwys 3, 21**, 200-1.

WILLIAMSBURG, KY

WILLIAMSBURG-WHITLEY COUNTY

TAKE-OFF MINIMUMS: **Rwy 2**, 400-1 ½ or std. w/a min. climb of 470' per NM to 1700. **Rwy 20**, std. w/ min. climb of 280' per NM to 2700, or 1200-3 for climb in visual conditions.

DEPARTURE PROCEDURE: **Rwy 2**, climb heading 018° to 2000 before turning East. **Rwy 20**, for climb in visual conditions cross Williamsburg-Whitley County Airport at or above 2300 MSL before proceeding on course.

NOTE: **Rwy 2**, multiple trees beginning 1167' from departure end of runway, 524' right of centerline, up to 49' AGL/1226' MSL. Multiple trees beginning 3563' from departure end of runway, left of centerline, up to 175' AGL/1353' MSL. Multiple trees beginning 4285' from departure end of runway, right of centerline, up to 321' AGL/1499' MSL. **Rwy 20**, multiple trees beginning 331' from departure end of runway, 331' left of centerline, up to 62' AGL/1217' MSL.

WINCHESTER, TN

WINCHESTER MUNI

TAKE-OFF MINIMUMS: **Rwy 18**, 1000-2.

DEPARTURE PROCEDURE: **Rwys 18, 36**, climb on runway heading to 2000 before turning.

31 MAY 2012 to 28 JUN 2012

31 MAY 2012 to 28 JUN 2012

12152



TAKE-OFF MINIMUMS AND (OBSTACLE) DEPARTURE PROCEDURES

